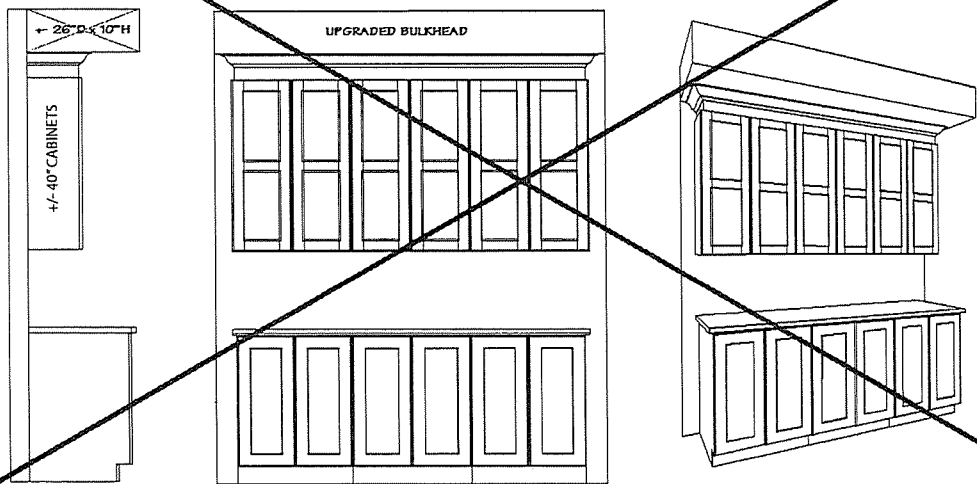


SINGLE HOME OPTIONAL KITCHEN CABINET CROWN MOULDING,
FILLER & BULKHEAD DETAILS

~~UPC9-3A~~

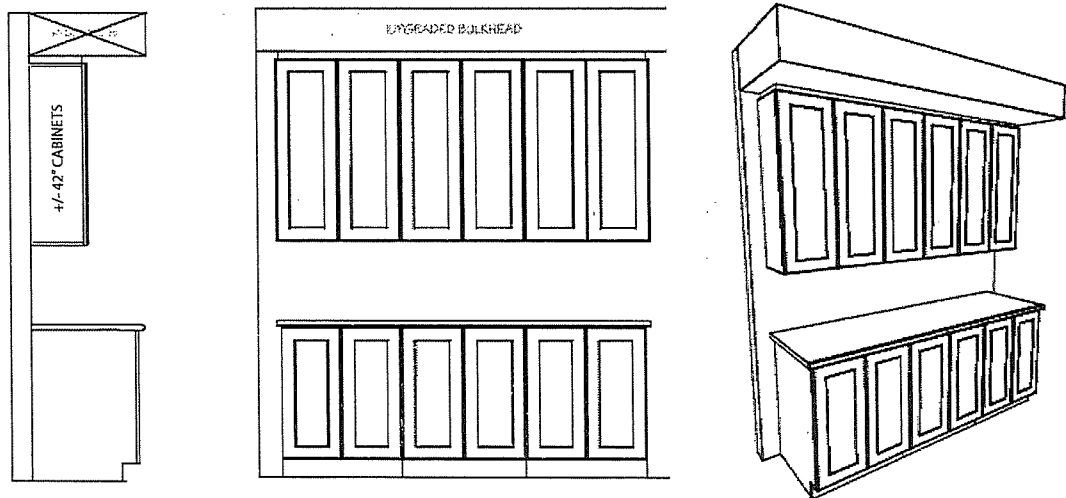
- Includes upgrade to 40" uppers with crown moulding & filler detail on upper kitchen cabinetry to upgraded bulkhead.



UPC9-2B

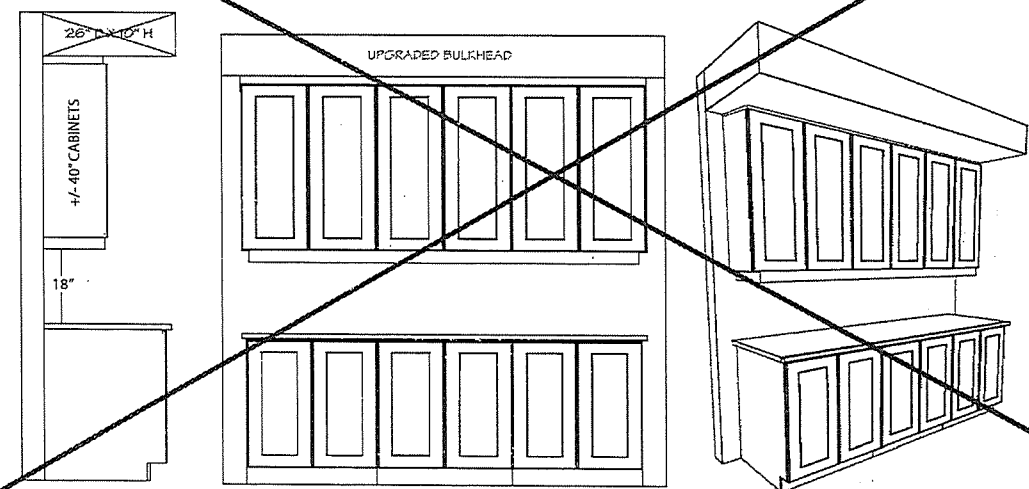
#24

- Includes upgrade to 42" uppers with filler detail on upper kitchen cabinetry to upgraded bulkhead.



~~UPC9-1C~~

- Includes upgrade to 40" uppers with filler detail & valence on upper kitchen cabinetry. Raised approx. 2" to upgraded bulkhead.



Site: Rathwell Landing

Purchaser: _____

Plan No: 4M-1589

Lot: 299

Purchaser: _____

Date: 7/23/20