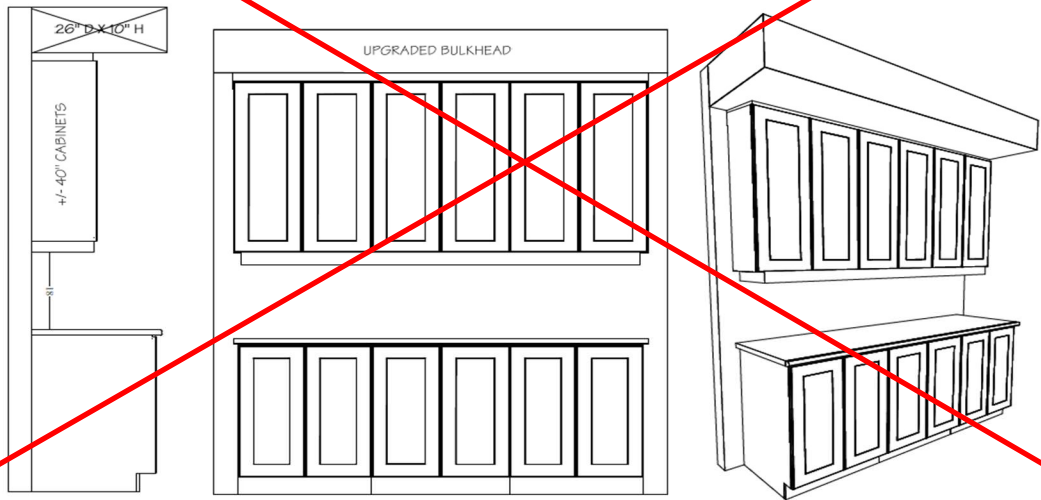


OPTIONAL KITCHEN CABINET CROWN MOULDING,  
FILLER & **UPGRADE** BULKHEAD DETAILS

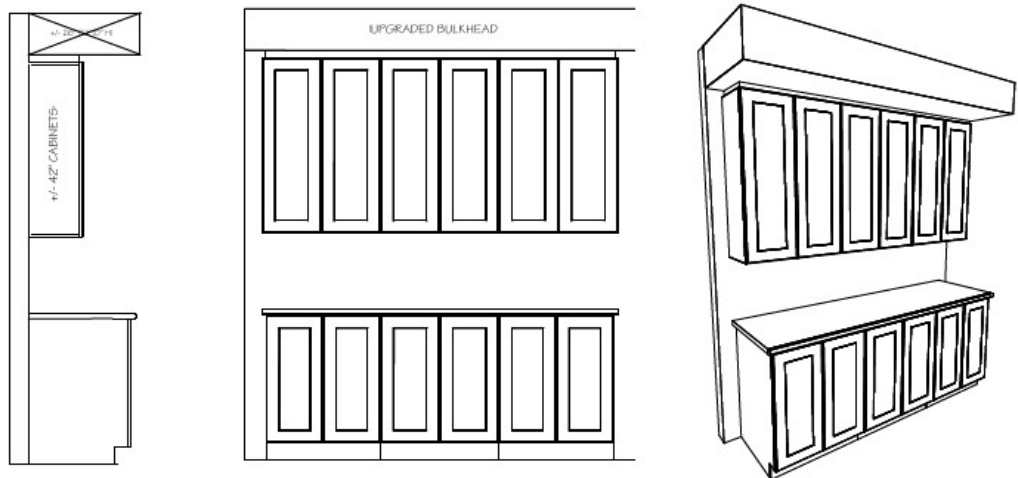
~~UPC9-1C Upgrade #: \_\_\_\_\_~~

- ~~Includes upgrade to 40" uppers with filler detail & valence on upper kitchen cabinetry. Raised approx. 2" to upgraded bulkhead.~~



UPC9-2B Upgrade #: \_\_\_\_\_

- Includes upgrade to 42" uppers with filler detail on upper kitchen cabinetry to upgraded bulkhead.



~~UPC9-3A Upgrade #: \_\_\_\_\_~~

- ~~Includes upgrade to 40" uppers with crown moulding & filler detail on upper kitchen cabinetry to upgraded bulkhead.~~



Site: \_\_\_\_\_

Purchaser: \_\_\_\_\_

Plan No: \_\_\_\_\_

Lot: \_\_\_\_\_

Purchaser: \_\_\_\_\_

Date: \_\_\_\_\_