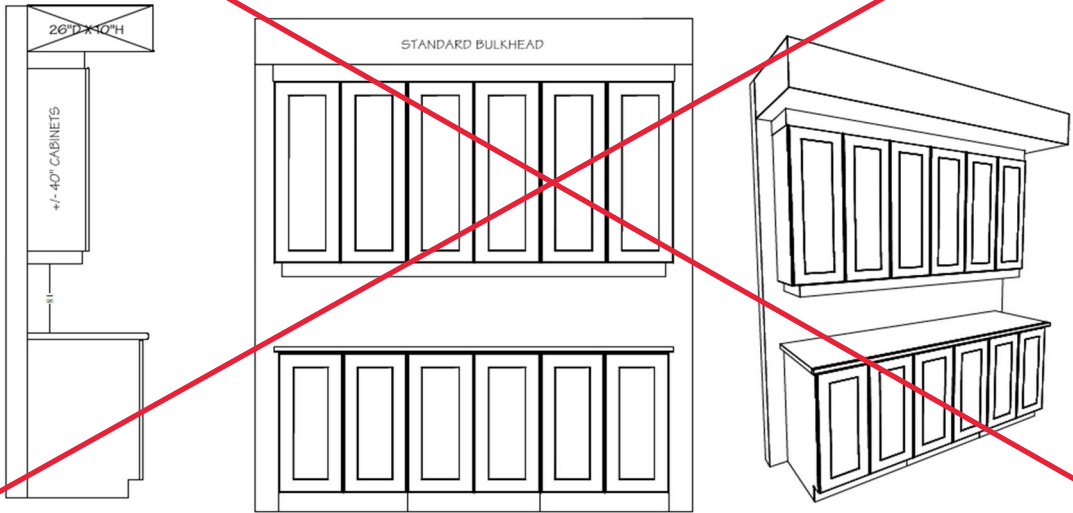


OPTIONAL KITCHEN CABINET CROWN MOULDING,  
FILLER & **STANDARD** BULKHEAD DETAILS

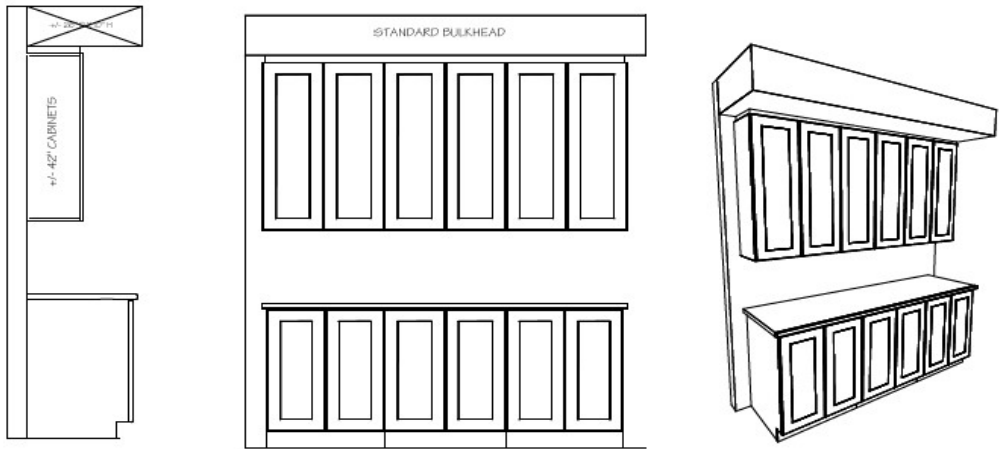
~~UPC9-1B Upgrade #: \_\_\_\_\_~~

- ~~Includes upgrade to 40" uppers with filler detail & valence on upper kitchen cabinetry. Raised approx. 2" to standard bulkhead.~~



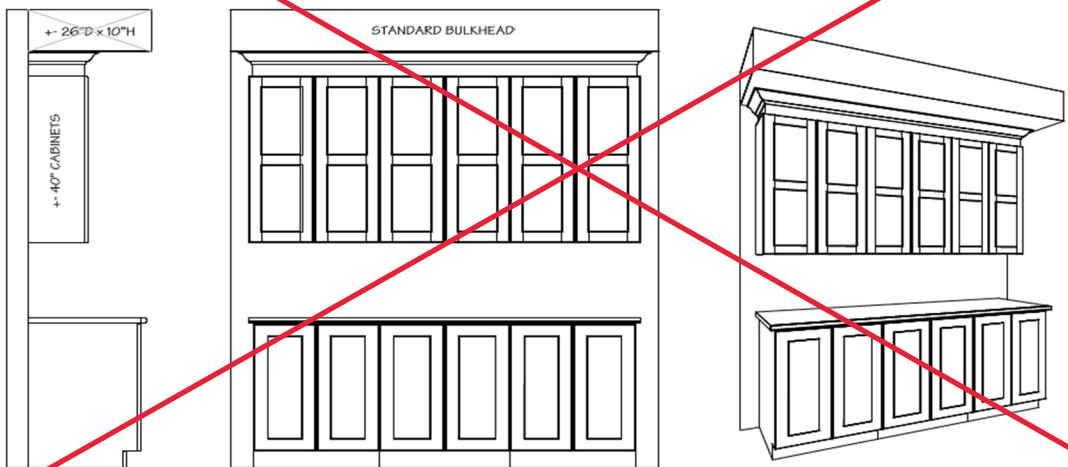
UPC9-2A Upgrade #: \_\_\_\_\_

- Includes upgrade to 42" uppers with filler detail on upper kitchen cabinetry to standard bulkhead.



~~UPC9-3B Upgrade #: \_\_\_\_\_~~

- ~~Includes upgrade to 40" uppers with crown moulding & filler detail on upper kitchen cabinetry to standard bulkhead.~~



Site: \_\_\_\_\_ Purchaser: \_\_\_\_\_

Plan No: \_\_\_\_\_ Purchaser: \_\_\_\_\_

Lot: \_\_\_\_\_

Date: \_\_\_\_\_