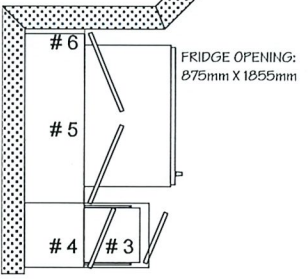
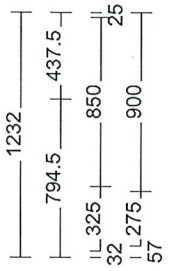
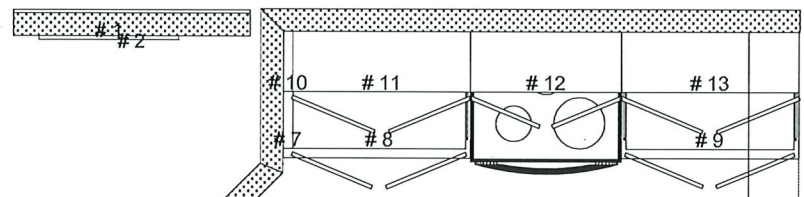
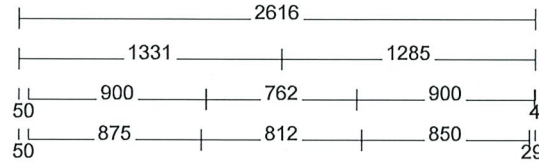


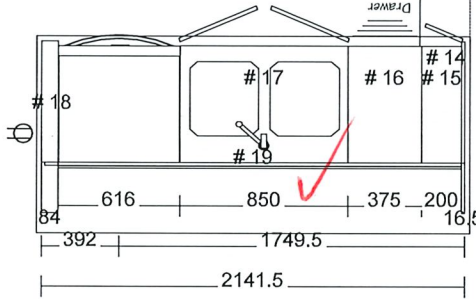
CLIENT: VALECRAFT		LOT:PST6-4	
ADDR.: 825 BRADLEY REV, ,			
SL #: 1084890			
Phone:	Mobile:	OUT BY: AL	DATE: 13/07/22
Email :		PST6-4	

* These plans are intended for production of cabinets ONLY. Potvin is not liable if they are used for other purposes.
 * Construction lines on plans are subjective and are drawn for representation only. Their dimensions are approximate and may vary due to site conditions.
 * Appliances in elevations and plans are generic templates and may not reflect actual selections.

PG#
1 of 3
 Sheet 1



STANDARD
 914mm UPPERS



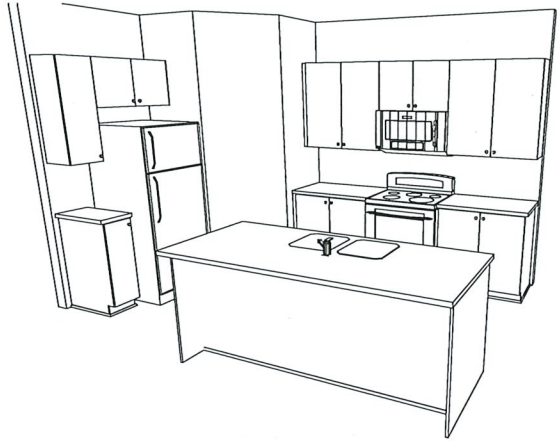
Room Name	
STANDARD	
COUNTERTOPS	
QUARTZ BY OTHERS ✓	
FINISH	
B10R ✓	
HANDLES	
DR:81091-195 DWR:81092-195 ✓	
DOOR STYLE	
basedoor:1001	B10R ✓
UpperDoor:1001	B10R ✓
Drawer:1001 DRAWER	B10R ✓
DRAWER GUIDE	
ARGITECH	
DOOR HINGE STYLE	
STND HINGE SET ✓	
Construction	
(A)Potvin 32mm	
CROWN MLDG	
NO CROWN	B10R
LIGHT VALANCE	
NO VALANCE	B10R

All Cabinets				
No	Name	Width	Height	Depth
0	Refrigerator RH	711	1695.5	800
0	Electric range	762	1118	716
0	DISHWASHER	616	883	587
0	Double W/Faucet/gray	762	101.5	457
1	DW FILLER T1S	711	102	19
2	16mm Raw MDF 16"/48"	1200	406.5	16.5
3	LC 275	275	883	587
4	UC325/914	325	914	302
5	UC850/437/302 Fridge	850	437	302
6	UC Filler	25	437	302
7	Lc Filler	50	883	587
8	LC 875	875	883	587
9	LC 850	850	883	587
10	UC Filler	50	914	302
11	UC900/914	900	914	302
12	762/495 Stove w/Duct E	762	495	302
13	UC900/914	900	914	302
14	DW GABLE	16.5	883	864
15	LC 200	200	883	587
16	LC375D	375	883	587
17	LC 850 SK USB	850	883	587
18	DW PLUG Right Std	84	883	864
19	ISLPANEL Horizontal	2108.5	883	16.5

AS PER PLAN Cabinet Production

Valecraft approves this plan for production. Valecraft guaranties site dimensions (walls/ windows / height / Clearances) and all plumbing, mechanical and electrical placements will suit this cabinet plan. Any cost associated with cabinet rework due to fitment issues will be Valecraft's responsibility.

AB 07/19/22
 Valecraft's approval date



\\portal\potvin-prod\AAA\CABINETS\0851_Builder\A_Valecraft_Production\FACE 51-T-HO\AS (EMBRUN)\P616-PST6-4-PRKADLET\P616-4-BRADLEY REV_P01

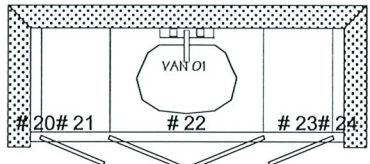
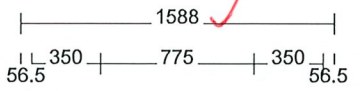
CLIENT: VALECRAFT		LOT:PST6-4	
ADDR.: 825 BRADLEY REV.,			
SL #: 1084890			
Phone:	Mobile:	OUT BY: AL	DATE: 13/07/22
Email :		PST6-4	

* These plans are intended for production of cabinets ONLY. Potvin is not liable if they are used for other purposes.
 * Construction lines on plans are subjective and are drawn for representation only. Their dimensions are approximate and may vary due to site conditions.
 * Appliances in elevations and plans are generic templates and may not reflect actual selections.

PG#
2 of 3
 Sheet 2



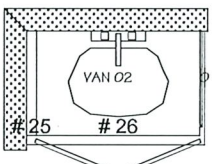
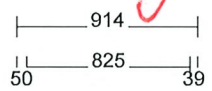
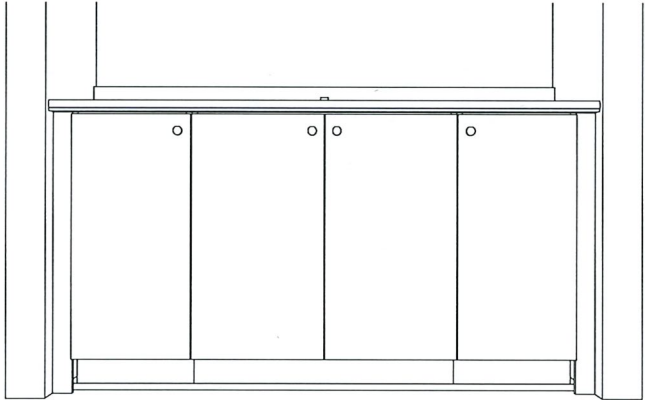
\\portal\potvin\potvin\AAA\CABINETS\JOB561_Builder\val_valecraft\Production\PL ACE ST-THOMAS (EMBRUN)\PST6-PST6-4_BRADLEYREV-PST6-4_BRADLEY REV_P.cad



MAIN 2ND FLOOR

All Cabinets				
No	Name	Width	Height	Depth
0	Single W/Faucet	508	51	432
20	V Filler	56.5	819	524
21	V350	350	819	524
22	V 775 SK	775	819	524

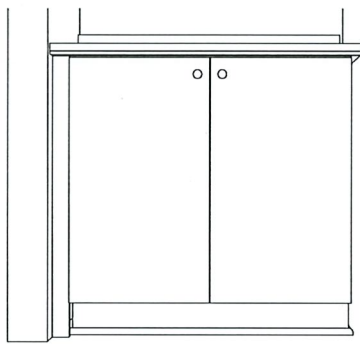
Room Name	
MAIN 2ND FLOOR	
COUNTERTOPS	
(A)P394-VL ✓	
FINISH	
B10R ✓	
HANDLES	
81091-195 ✓	
DOOR STYLE	
basedoor:1001	B10R ✓
UpperDoor:1001	B10R ✓
Drawer:1001 DRAWER	B10R ✓
DRAWER GUIDE	
ARCITECH	
DOOR HINGE STYLE	
SOFTCLOSE HINGES ✓	
Construction	
(A)Potvin 32mm	



ENSUITE 2ND FLOOR

All Cabinets				
No	Name	Width	Height	Depth
0	Single W/Faucet	508	51	432
25	V Filler	50	819	524
26	V 825 SK	825	819	524

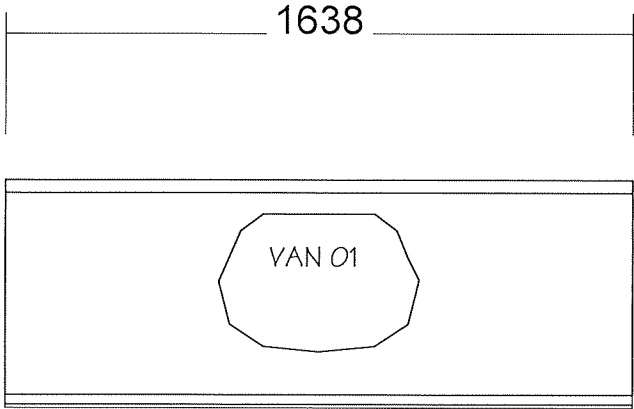
Room Name	
ENSUITE 2ND FLOOR	
COUNTERTOPS	
(A)P394-VL ✓	
FINISH	
B10R ✓	
HANDLES	
81091-195 ✓	
DOOR STYLE	
basedoor:1001	B10R ✓
UpperDoor:1001	B10R ✓
Drawer:1001 DRAWER	B10R ✓
DRAWER GUIDE	
ARCITECH	
DOOR HINGE STYLE	
SOFTCLOSE HINGES	
Construction	
(A)Potvin 32mm	



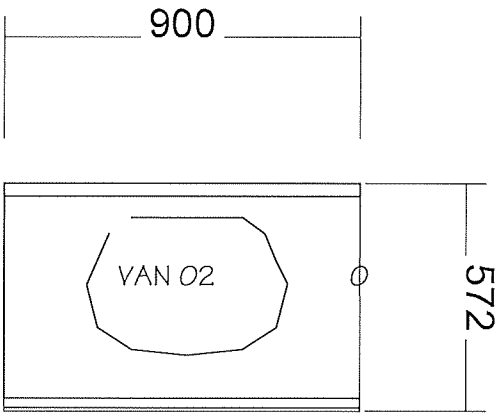
CLIENT: VALECRAFT		LOT:PST6-4	
ADDR.: 825 BRADLEY REV, ,			
SL #: 1084890			
Phone:	Mobile:	OUT BY: AL	DATE: 13/07/22
Email :		PST6-4	

* These plans are intended for production of cabinets ONLY. Potvin is not liable if they are used for other purposes.
 * Construction lines on plans are subjective and are drawn for representation only. Their dimensions are approximate and may vary due to site conditions.
 * Appliances in elevations and plans are generic templates and may not reflect actual selections.

PG#
3 of 3
Sheet 3



MAIN 2ND FLOOR
COLOUR (A) P394-VL



ENSUITE 2ND FLOOR
COLOUR (A) P394-VL

\\portal\potvin\potvin\AAA\CABINETS\JOB5\Build\5\VALECRFT_Production\PLACE-ST\THOMAS (EMBRUN)\PST6-PST6-4-BRADLEY\PST6-4-BRADLEY REV.P.dwg