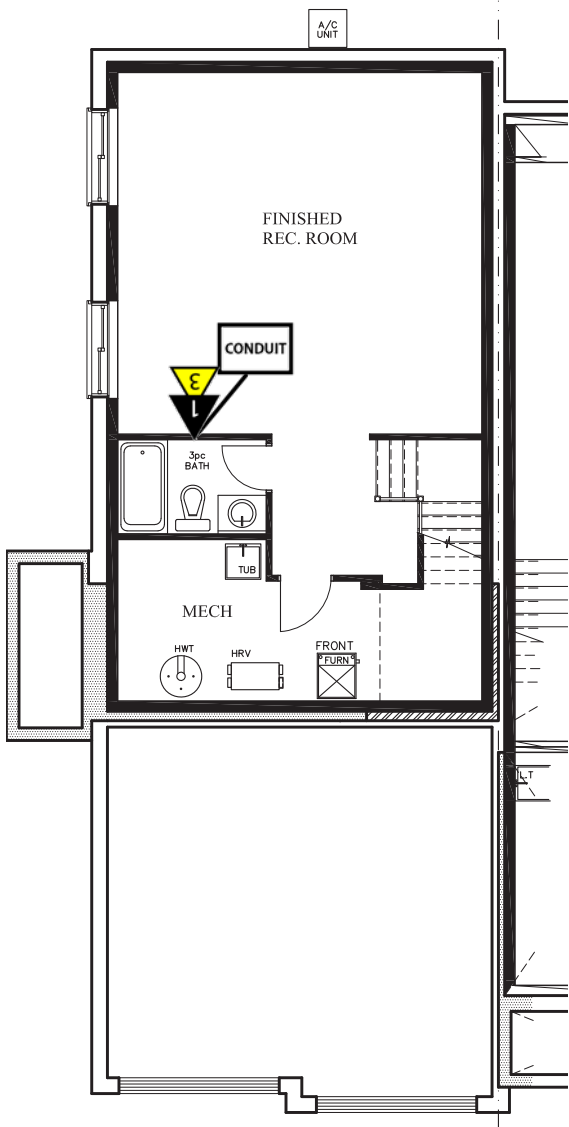
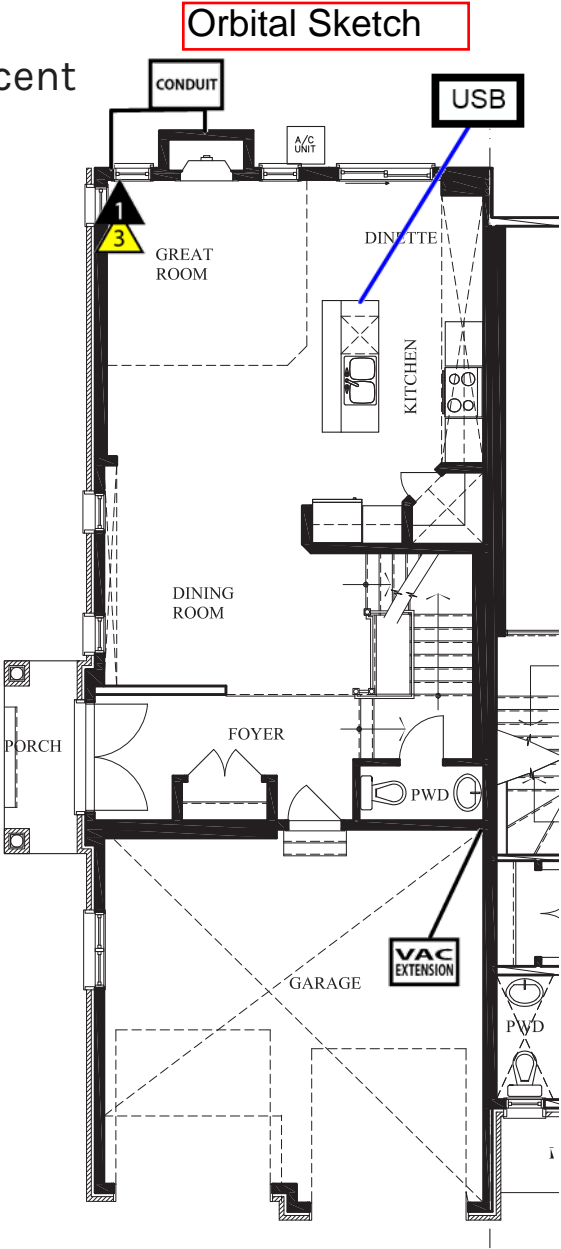


Cardinal Trail 5  
BLOCK F  
1159 Brasseur Crescent

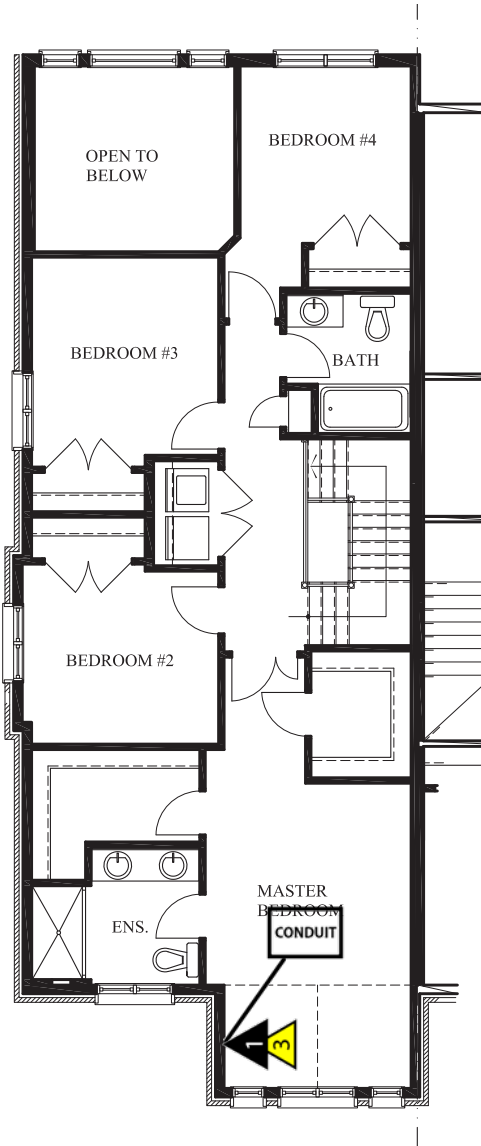
Plan No.: 4M-1217  
Lot: CT5 F29  
Date: August 31, 2022



478.36 sq.ft. fin bsmt BASEMENT FLOOR



743.14 sq.ft. GROUND FLOOR



936.5sq.ft SECOND FLOOR



Vertical and/or horizontal bulkheads (chaseways) may be required to contain mechanical piping. Bulkhead shown in grey areas.  
All dimensions are approximate. E. & O.E., plans, materials and specifications are subject to change without notice. Actual useable floor space may vary from the stated floor area. \*Note: Number of steps varies due to site grading.