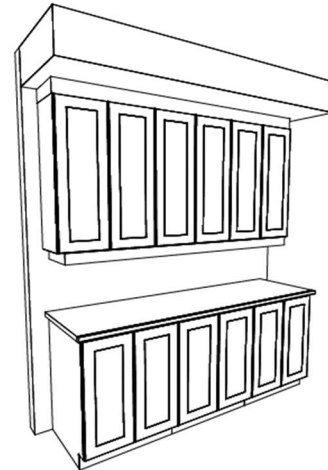
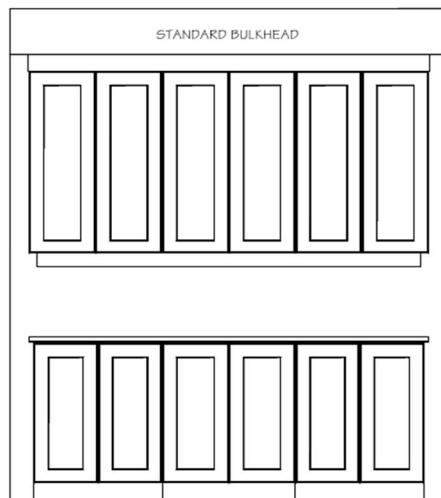
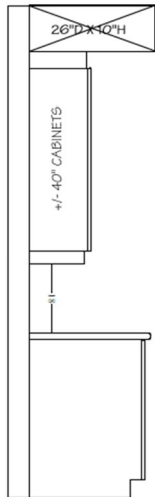




OPTIONAL KITCHEN CABINET CROWN MOULDING, FILLER &  
**STANDARD BULKHEAD DETAILS**

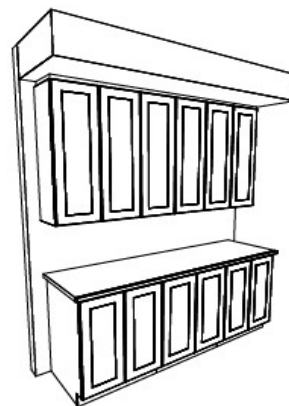
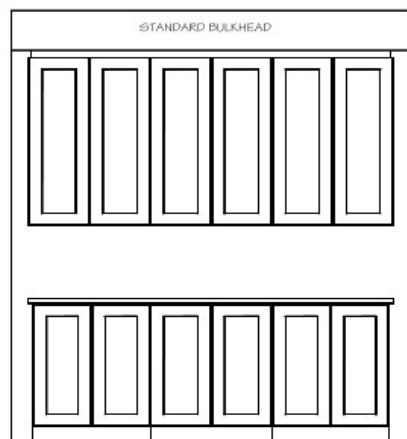
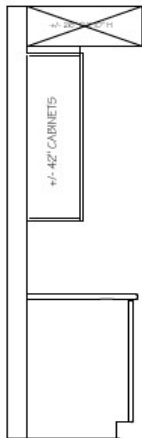
**UPC9-1B** Upgrade #: \_\_\_\_\_

- Includes upgrade to 40" uppers with filler detail & valence on upper kitchen cabinetry. Raised approx. 2" to standard bulkhead.



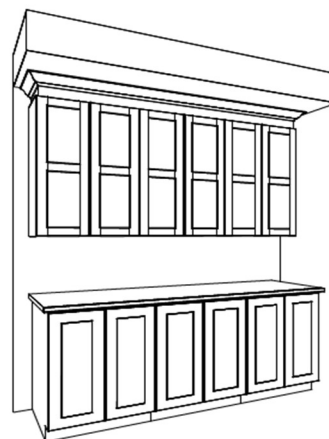
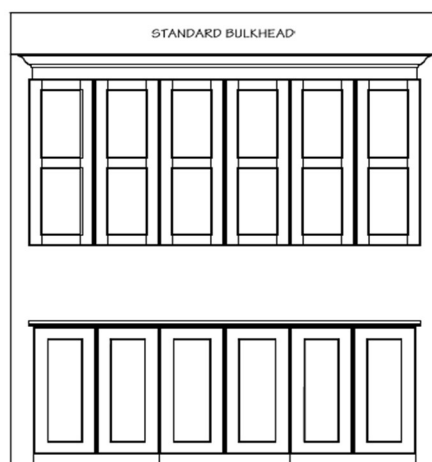
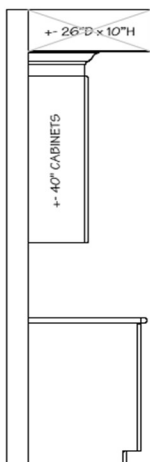
**UPC9-2A** Upgrade #: \_\_\_\_\_

- Includes upgrade to 42" uppers with filler detail on upper kitchen cabinetry to standard bulkhead.



**UPC9-3B** Upgrade #: \_\_\_\_\_

- Includes upgrade to 40" uppers with crown moulding & filler detail on upper kitchen cabinetry to standard bulkhead.



Site: \_\_\_\_\_ Purchaser: \_\_\_\_\_

Plan No: \_\_\_\_\_

Lot: \_\_\_\_\_ Purchaser: \_\_\_\_\_

Date: \_\_\_\_\_