

## CONSTRUCTION SUMMARY

**North Oakville - 150 - 1 - DIAMANTE. (38-09) ELEV A**

Register Plan Number:    Municipal Address:    Closing: **30-Jan-20**

### ELECTRICAL

|       |    |          |                   |   |
|-------|----|----------|-------------------|---|
| Inv.3 | 5  | Line 292 | 24Jun19 / 23Aug19 | 1 - GREAT ROOM: INSTALL RECEPTACLES - DEDICATED 15 AMP 120 VOLT RECEPTABLE FOR TV ABOVE FIREPLACE. SEE SKETCH.<br>Note: AS PER AGREEMENT OF PURCHASE AND SALE   |
| Inv.3 | 6  | Line 293 | 24Jun19 / 23Aug19 | 1 - BED #3: INSTALL RECEPTACLES - DEDICATED 15 AMP 120 VOLT RECEPTABLE.<br><br>NOTE: TO BE PLACED 2 FEET FROM MAIN BATH TUB WALL, 5 FEET HIGH FROM FINISHED FLOOR. SEE SKETCH. LOCATIONS MAY VARY SLIGHTLY DUE TO JOIST LOCATIONS.<br>Note:   |
| Inv.3 | 1  | Line 288 | 24Jun19 / 23Aug19 | 1 - TELEPHONE AND CABLE LOCATION SKETCH. LOCATIONS MAY VARY SLIGHTLY DUE TO JOIST LOCATIONS.<br>Note:   |
| Inv.3 | 13 | Line 311 | 24Jun19 / 23Aug19 | 1 - KITCHEN: INSTALL ELECTRICAL - ROUGH-IN FOR 30 - 40 AMP BUILT-IN WALL OVEN.<br>SEE SKETCH FOR LOCATION<br>Note:  |
| Inv.3 | 26 | Line 314 | 24Jun19 / 23Aug19 | 1 - KITCHEN: INSTALL RECEPTACLES - DEDICATED 15 AMP 120 VOLT RECEPTABLE<br>**NOTE**: FOR FUTURE MICROWAVE IN ISLAND. PURCHASER WILL EXTEND THE ISLAND AT THE TIME OF COLOURS SO THAT AN UNDERCOUNTER MICROWAVE CAN BE INSTALLED. ELECTRICAL SHOULD BE ROUGHED IN.<br>Note: SEE SKETCH FOR FUTURE LOCATION |
| Inv.3 | 16 | Line 300 | 24Jun19 / 23Aug19 | 4 - GREAT ROOM: INSTALL FOUR (4) POT LIGHT - 4" LED NON-INSULATED CEILINGS. SEE SKETCH. LOCATIONS MAY VARY SLIGHTLY DUE TO JOIST LOCATIONS<br>Note:   |
| Inv.3 | 17 | Line 301 | 24Jun19 / 23Aug19 | 4 - POT DINING ROOM: INSTALL FOUR (4) LIGHT - 4" LED NON-INSULATED CEILINGS. SEE SKETCH. LOCATIONS MAY VARY SLIGHTLY DUE TO JOIST LOCATIONS<br>Note:  |
| Inv.3 | 18 | Line 302 | 24Jun19 / 23Aug19 | 4 - BREAKFAST AREA: INSTALL FOUR (4) POT LIGHT - 4" LED NON-INSULATED CEILINGS. SEE SKETCH. LOCATIONS MAY VARY SLIGHTLY DUE TO JOIST LOCATIONS<br>Note:   |
| Inv.3 | 19 | Line 303 | 24Jun19 / 23Aug19 | 4 - KITCHEN: INSTALL FOUR (4) POT LIGHT - 4" LED NON-INSULATED CEILINGS. SEE SKETCH. LOCATIONS MAY VARY SLIGHTLY DUE TO JOIST LOCATIONS<br>Note:  |
| Inv.3 | 20 | Line 304 | 24Jun19 / 23Aug19 | 1 - KITCHEN: CEILING FIXTURE - RELOCATE STANDARD CEILING FIXTURE, ABOVE KITCHEN ISLAND. SEE SKETCH. LOCATION MAY VARY SLIGHTLY DUE TO JOIST LOCATIONS<br>Note:  |
| Inv.3 | 21 | Line 305 | 24Jun19 / 23Aug19 | 1 - MASTER ENSUITE: INSTALL CEILING LIGHT ROUGH IN - FOR 1 CEILING LIGHT, ON EXISTING SWITCH (DOES NOT INCLUDE FIXTURE). TO GO ABOVE TUB, SEE SKETCH. LOCATION MAY VARY SLIGHTLY DUE TO JOIST LOCATIONS<br>Note:  |



CONSTRUCTION SUMMARY

North Oakville - 150 - 1 - DIAMANTE. (38-09) ELEV A

Register Plan Number:    Municipal Address:    Closing: 30-Jan-20

|                         |   |
|-------------------------|---|
| Inv.3<br>12<br>Line 297 | 1 - KITCHEN: INSTALL RECEPTACLES - ADDITIONAL 15 AMP 120 VOLT RECEPTABLE- FOR GAS STOVE<br><br>Note:                            |
| 24Jun19 / 23Aug19       |   |
| Inv.3<br>14<br>Line 298 | 1 - KITCHEN: INSTALL RECEPTACLES - DEDICATED 15 AMP 120 VOLT RECEPTABLE- FOR FREEZER. SEE SKETCH<br><br>Note:                   |
| 24Jun19 / 23Aug19       |   |
| Inv.3<br>15<br>Line 299 | 1 - BREAKFAST AREA: INSTALL RECEPTACLES - DEDICATED 15 AMP 120 VOLT RECEPTABLE. FOR FUTURE WINE FRIDGE. SEE SKETCH<br><br>Note: |
| 24Jun19 / 23Aug19       |   |

HVAC

|                         |  |
|-------------------------|--|
| Inv.3<br>11<br>Line 307 | 1 - BACKYARD: INSTALL GAS PIPING AND OTHER - GAS LINE R/I FOR BASEMENT OR MAIN FLOOR - BBQ - UP TO 3/4 INCH LINE. SEE SKETCH FOR LOCATION<br><br>Note: |
| 24Jun19 / 23Aug19       |  |
| Inv.3<br>10<br>Line 312 | 1 - LAUNDRY ROOM: INSTALL GAS PIPING AND OTHER - GAS LINE R/I FOR 2ND FLOOR DRYER- UP TO 3/4 INCH LINE<br><br>Note:                                    |
| 24Jun19 / 23Aug19       |  |
| Inv.3<br>24<br>Line 310 | 1 - FILTRATION - HUMIDIFICATION - CONTROL - FLO - THRU HUMIDIFIER LARGE HE205 - 18 GAL<br><br>Note:  |
| 24Jun19 / 23Aug19       |  |
| Inv.3<br>9<br>Line 296  | 1 - KITCHEN: INSTALL GAS PIPING AND OTHER - GAS LINE R/I FOR MAIN FLOOR - STOVE - UP TO 3/4 INCH LINE<br><br>Note:                                     |
| 24Jun19 / 23Aug19       |  |

PLUMBING

|                         |  |
|-------------------------|--|
| Inv.3<br>8<br>Line 295  | 1 - BACKFLOW PREVENTER VALVE<br><br>Note:  |
| 24Jun19 / 23Aug19       |  |
| Inv.3<br>25<br>Line 313 | 1 - MAIN BATH: INSTALL POSI-TEMP SHOWER FAUCET WITH 3 FUNCTION TRANSFER VALVE/ TRIM AND SLIDE BAR WITH HAND SHOWER<br><br>MODEL: TL183EP/3372/128284/T4171/62320/3669EP/A725 CHROME<br><br>Note: |
| 24Jun19 / 23Aug19       |  |

VACCUM/BELL

|                        |  |
|------------------------|--|
| Inv.3<br>2<br>Line 289 | 2 - GREAT ROOM/BED #3: UPGRADE FROM STANDARD CABLE (RG6) TO INTERNET - CAT-6 NETWORK CABLE. LOCATIONS MAY VARY SLIGHTLY DUE TO JOIST LOCATIONS.<br><br>Note: |
| 24Jun19 / 23Aug19      |  |
| Inv.3<br>3<br>Line 290 | 1 - GREAT RR0M: INSTALL CONDUIT - 1 1/4" ORANGE FLEX CONDUIT APPROX. 35FT FOR FIREPLACE<br><br>Note: AS PER AGREEMENT OF PURCHASE AND SALE                   |
| 24Jun19 / 23Aug19      |  |

North Oakville - 150 - 1 - DIAMANTE. (38-09) ELEV A

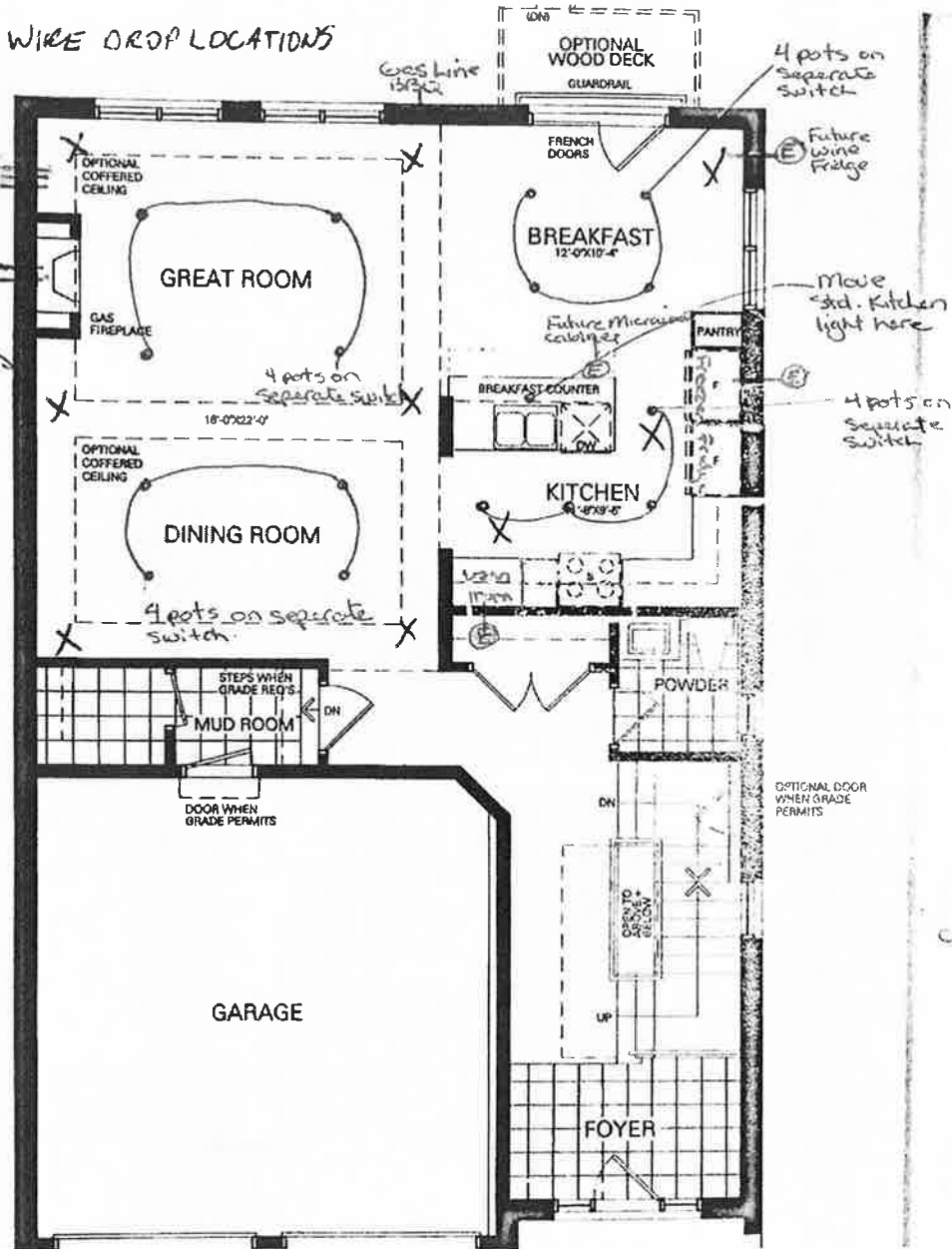
Register Plan Number:    Municipal Address:    Closing: 30-Jan-20

|                   |   |
|-------------------|---|
| Inv.3             | 1 - BED #3: INSTALL CONDUIT - 1 1/4" ORANGE FLEX CONDUIT APPROX. 35FT FOR FUTURE TV. CONDUIT TO EXIT RIGHT BELOW THE ELECTRICAL OUTLET- SEE NOTES BELOW   |
| 4                 | Note: NOTE: TO BE PLACED 2 FEET FROM MAIN BATH TUB WALL, 5 FEET HIGH FROM FINISHED FLOOR. SEE SKETCH. LOCATIONS MAY VARY SLIGHTLY DUE TO JOIST LOCATIONS. |
| 24Jun19 / 23Aug19 |   |
| Inv.3             | 1 - GARAGE: INSTALL CENTRAL VACUUM - CENTRAL VAC PIPING COMPLETE TO GARAGE  |
| 7                 | - ONE OUTLET IN BASEMENT  |
| Line 294          | Note:   |
| 24Jun19 / 23Aug19 |   |

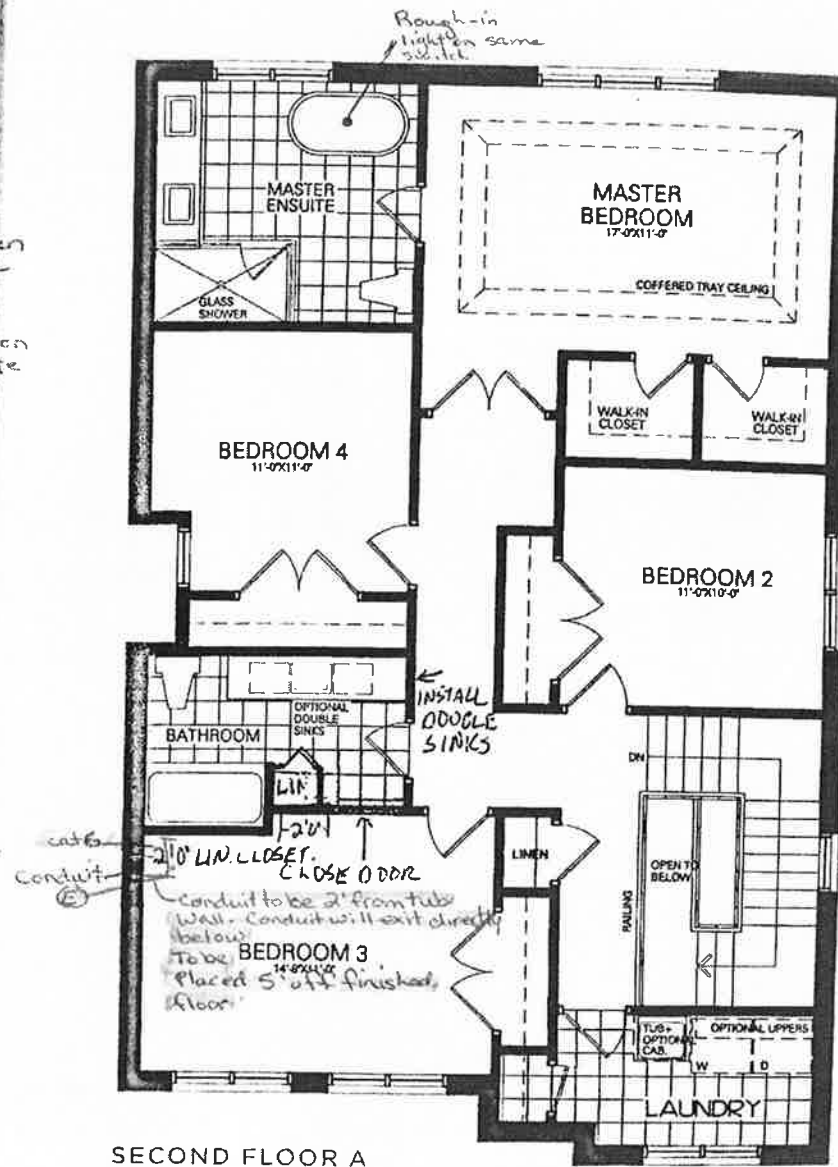
WINDOWS

|                   |  |
|-------------------|--|
| Inv.3             | 2 - BASEMENT: ENLARGE TWO (2) STD. BASEMENT WINDOWS TO - 36 X 30. SEE SKETCH |
| 22                |  |
| Line 308          | Note:  |
| 24Jun19 / 23Aug19 |  |
| Inv.3             | 1 - BASEMENT: ENLARGE STANDARD BASEMENT WINDOW - TO 36 X 24. SEE SKETCH      |
| 23                |  |
| Line 309          | Note:  |
| 24Jun19 / 23Aug19 |  |

X = SPEAKER WIRE DROP LOCATIONS



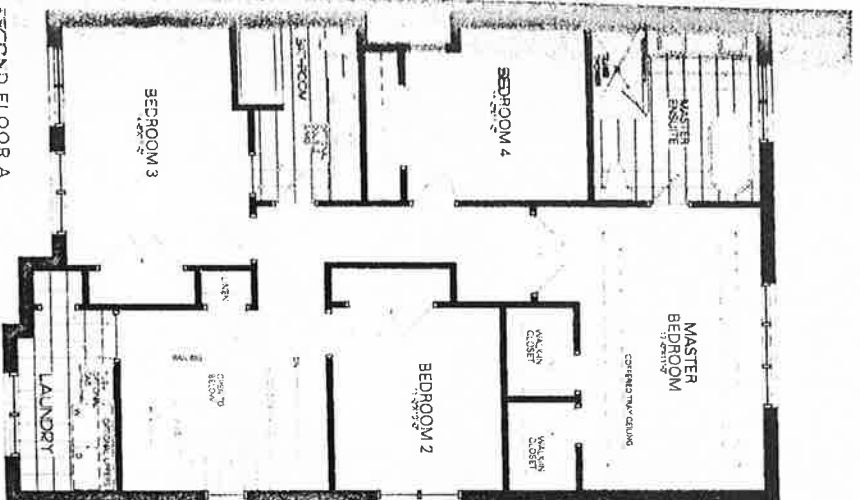
Lot 150  
Aug 20, 19



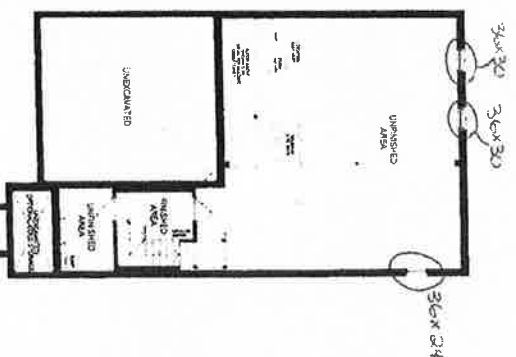
SECOND FLOOR A

Lot 150  
Aug 20, 19

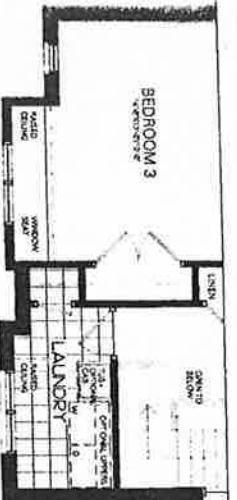
MP AO



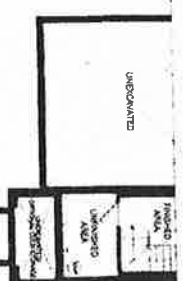
SECOND FLOOR A



BASEMENT A



SECOND FLOOR B



BASEMENT B

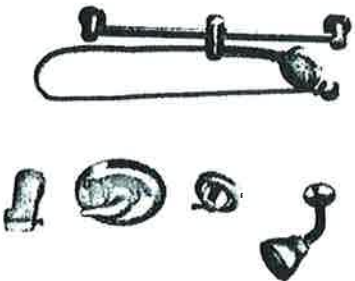
# Chateau®

Traditional | Transitional | Modern

The Chateau collection delivers Moen performance and reliability with a simple understated appeal.

Lot 150  
Aug 20, 19

AD

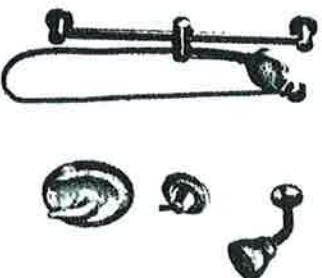


Posi-Temp® Tub/Shower Faucet  
with 3 Function Transfer Valve/Trim and  
Slide Bar with Hand Shower \*

Model TL183EP / 3372 / 128284 / T4171 /  
62320 / 3669EP / A725  
Not available in BC

Chrome - \$953.20

Main Bath



Posi-Temp® Shower only  
with 3 Function Transfer Valve/Trim  
and Slide Bar with Hand Shower \*

Model TL182EP / 3372 / T4171 / 62320 /  
3669EP / A725  
Not available in BC

Chrome - \$893.20

## FINISH OPTIONS:



C BC

To order, combine the model number with one of these finish letter(s):  
Brushed Chrome (BC).  
To order Chrome (C) model, use model number only.  
\* Please see vertical spa guide for installation #700106