

North Oakville - 98 - 1 - PINEHURST (38-07) ELEV B

Registere Plan Number: Municipal Address: Closing: 30-Jul-20

ELECTRICAL

| | |
|-------------------|---|
| Inv. 11 | 1 - BELL AND CABLE LOCATION SKETCH. LOCATIONS MAY VARY SLIGHTLY DUE TO JOIST LOCATIONS |
| Line 51 | Note: |
| 30Jun19 / 26Aug19 | |
| Inv. 11 | 1 - KITCHEN: INSTALL Receptacles - ADDITIONAL 15 amp 120 volt receptable- FOR GAS STOVE |
| 3 | |
| Line 53 | Note: |
| 30Jun19 / 26Aug19 | |
| Inv. 23 | 1 - KITCHEN: INSTALL ELECTRICAL - ROUGH-IN FOR 30 - 40 AMP BUILT-IN WALL OVEN |
| 7 | |
| Line 335 | Note: |
| 23Aug19 / 26Aug19 | |
| Inv. 23 | 1 - KITCHEN: FRIDGE |
| 8 | |
| Line 352 | ***PLEASE NOTE LOCATION OF ELECTRICAL PLUG*** |
| Note: | |
| 23Aug19 / 26Aug19 | |

HVAC

| | |
|-------------------|---|
| Inv. 11 | 1 - KITCHEN: INSTALL GAS LINE FOR STOVE |
| 4 | |
| Line 54 | Note: |
| 30Jun19 / 26Aug19 | |
| Inv. 23 | 1 - KITCHEN: INSTALL UPGRADE STOVE VENT FROM 6 INCH TO 10 INCH - DOES NOT INCLUDE MAKE - UP AIR IF REQUIRED - EACH. |
| 6 | |
| Line 333 | Note: |
| 23Aug19 / 26Aug19 | |

MISCELLANEOUS

| | |
|-------------------|--|
| Inv. 23 | 1 - ADMINISTRATION FEE TO REOPEN FILE HAS BEEN WAIVED BY HEAD OFFICE |
| 5 | |
| Line 332 | Note: |
| 23Aug19 / 26Aug19 | |

VACCUM/BELL

| | |
|-------------------|---|
| Inv. 11 | 1 - Central Vacuum - Central Vac Piping complete to garage - one outlet in basement |
| 2 | |
| Line 52 | Note: |
| 30Jun19 / 26Aug19 | |

Pinehurst

Elevation A

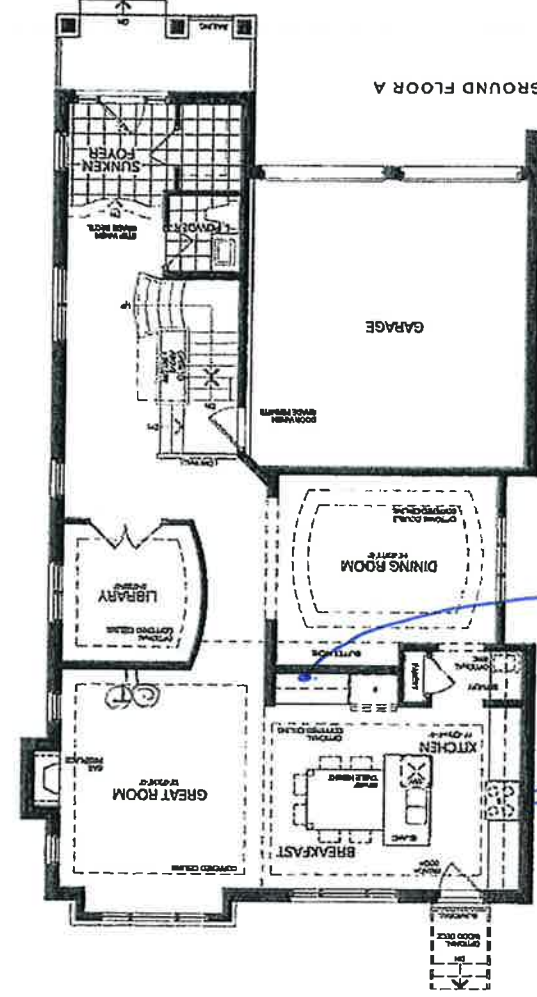
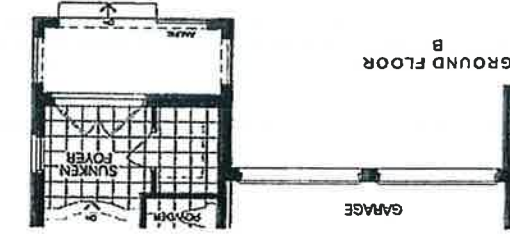
2,933 Sq.ft.

Include Sq.ft. of Finished Basement

2,934 Sq.ft.

Elevation B

Includes 81 Sq.ft. of Finished Basement

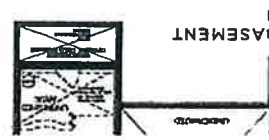
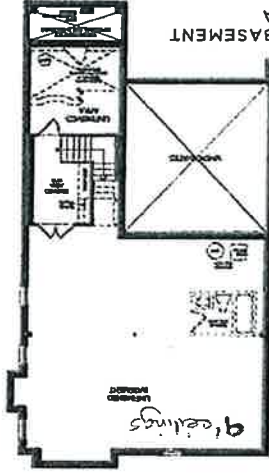
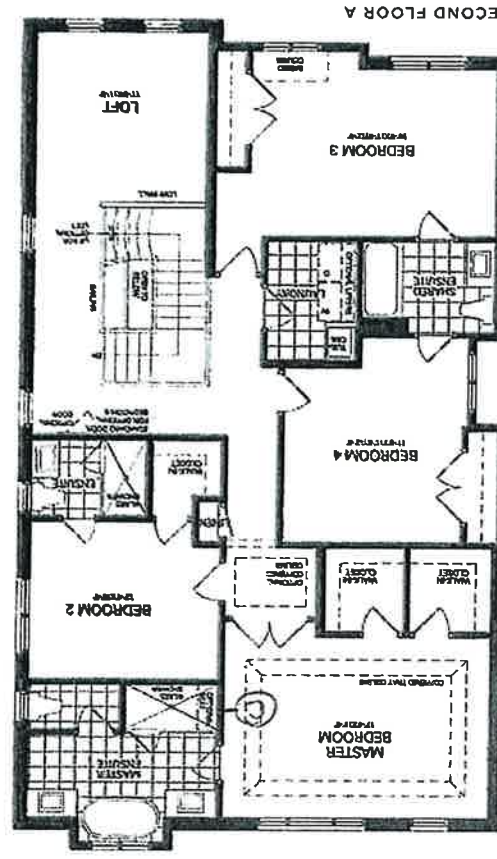


Ⓣ — telephone

ⓐ — cable

Future wall over ⓐ

10" vent ⓐ



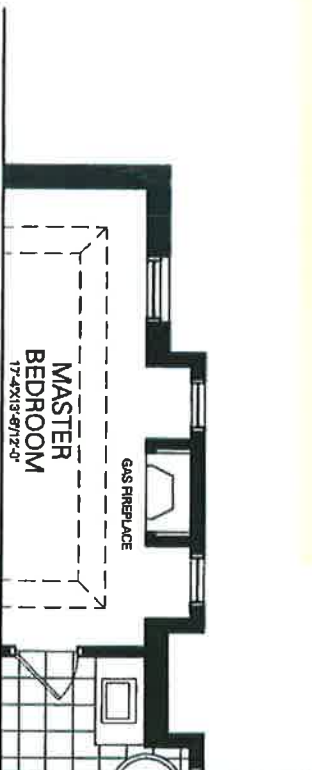
Lot 98

June 30, 2019

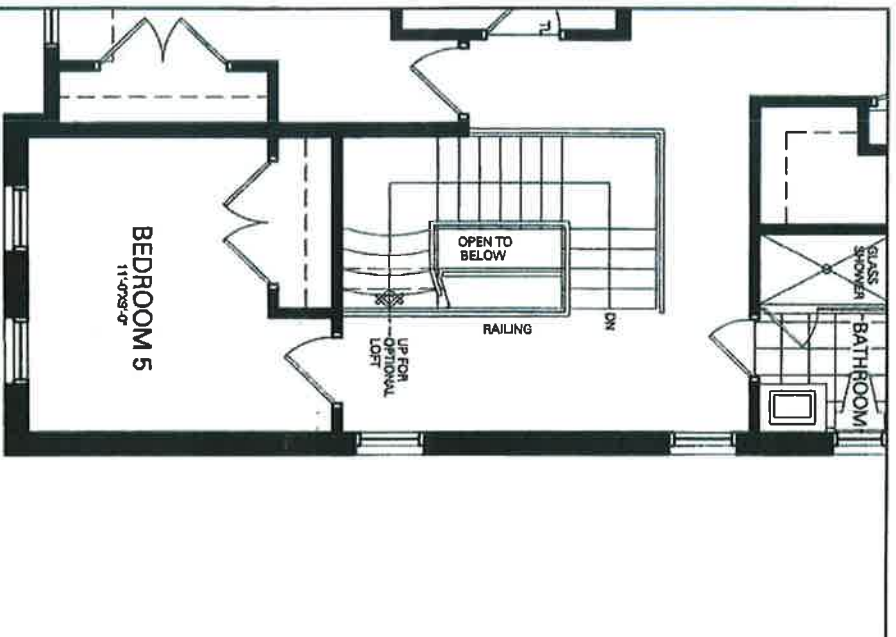
2B

SH

Disclaimer: All dimensions are approximate and subject to normal construction variances. Dimensions may exceed the useable floor area. Sizes and specifications subject to change without notice. Furniture is displayed for illustration purposes only and does not necessarily reflect the electrical plan for the suite. Suites are sold unfurnished. Balcony and facade variations may apply, contact a sales representative for further detail. ©Valley Homes 2018. All rights reserved.



OPTIONAL PARTIAL PLAN
WITH BOX BAY & FIREPLACE
(ADDITIONAL 14 sf. AREA)



PARTIAL SECOND FLOOR WITH
OPTIONAL BEDROOM 5
(ELEVATION A SHOWN)
TYPE OAK-387

ZB SH

Lot 98
June 30, 2019
ZB SH

HPIN54WS
54-INCH BOX ISLAND HOOD
PROFESSIONAL® SERIES

not 98

2B SH



FEATURES & BENEFITS

- Meticulously sculpted, floating stainless steel Professional® Series island hoods make a dramatic statement in your kitchen
- ★ - Equipped with the Thermador Connected Experience by Home Connect™
- Powerfully Quiet® system accepts integral, inline, and remote blowers
- Beautiful illumination with multi-level, vivid LED lights
- Features automatic mode, delay shut-off, and check filter light

ACCESSORIES (OPTIONAL)

25 ft. Blower Connector Cable - EXTNCB25W
For use with the following inline and remote blowers: VTR630W, VTR1030W, VTR1330W, VT1610W, VT11010W

Roofplates

RFP1760P - For use with 600 CFM remote blower VTR630W
RFP171000P - For use with 1000 CFM remote blower
VTR1030W and 1300 CFM blower VTR1330W

| | |
|--------------------------|-------|
| 8" Wall Cap | WC8 |
| 10" Wall Cap | WC10 |
| Roof Jack and Transition | RJ310 |

GENERAL PROPERTIES

Features

Multi-Level LED Lights with Fading Transitions, Automatic Mode, Check Filter Reminder Light, Delay Shut-Off

| | |
|------------------------------|--------------------------|
| Operating Mode | Ducted |
| Maximum CFM | Blower Sold Separately |
| Number of Speed Settings | 4-Stage |
| Number of Lights | 4 |
| Bulb Type | LED |
| Total Power of the Lamps (W) | 4.8 W |
| Damper Included | Yes |
| Grease Filter Material | Washable Stainless Steel |

Grease Filter Type

Stainless-Steel Commercial Style Baffle Filter

Home Connect™ (Wi-Fi Enabled) Yes

TECHNICAL DETAILS

| | |
|----------------------------------|-----------------------------|
| Watts (W) | See Chart on Page 3 |
| Current (A) | See Chart on Page 3 |
| Volts (V) | 120 V |
| Frequency (Hz) | 60 Hz |
| Plug Type | Fixed Connection |
| Power Cord / Conduit Length (in) | Direct Wire at Junction Box |

DIMENSIONS & WEIGHT

| | |
|--|----------------------------------|
| Overall Appliance Dimensions (Width of Canopy Included) (HxWxD) (in) | 5 1/4" x 53 15/16" x 26 11/16" |
| Height of the Chimney (in) | 24 3/4" – 36 3/4" |
| Minimum Ceiling Height Required | 8' |
| Required Distance Above Cooktop / Range Cooking Surface | 30" / 30" min. 40" / 40" max. |
| Diameter of Air Duct (in) Top | 10" |
| Net Weight (lbs) | 143 lbs |

ACCESSORIES (REQUIRED)

Blower (Sold Separately)

BLOWER OPTIONS

| | |
|---|---------------------|
| Remote Blowers (Mounted to Roof or External Wall) | VTR630W - 600 CFM |
| | VTR1030W - 1000 CFM |
| | VTR1330W - 1300 CFM |
| Inline Blowers (Mounted Between Kitchen and External Wall) | VT1610W - 600 CFM |
| | VT11010W - 1000 CFM |
| | VTN630W - 600 CFM |
| Integrated Blower (Mounted in Hood) | VTN1090R - 1000 CFM |

WARRANTY

Limited Warranty Parts and Labor

2 Year

★ THERMADOR® EXCLUSIVE

HPIN54WS

54-INCH BOX ISLAND HOOD

PROFESSIONAL® SERIES

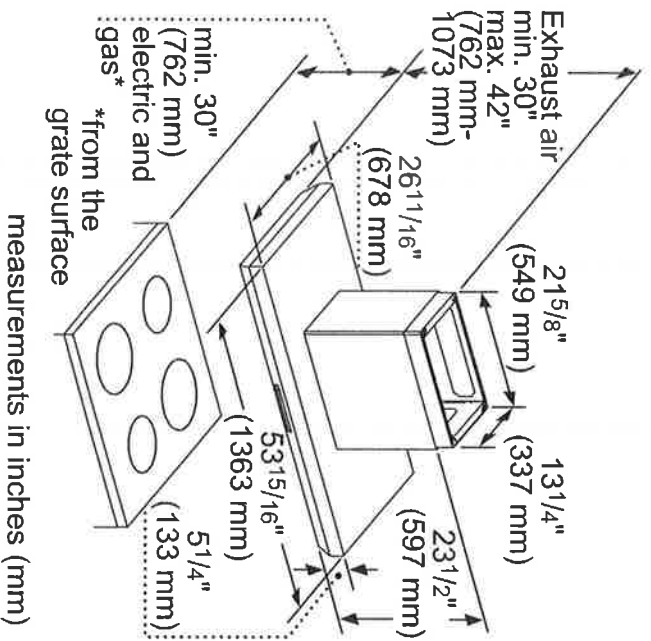
Lot 98

28

54

Thermador ★

HOOD DIMENSIONS



HPIN54WS
54-INCH BOX ISLAND HOOD
PROFESSIONAL® SERIES

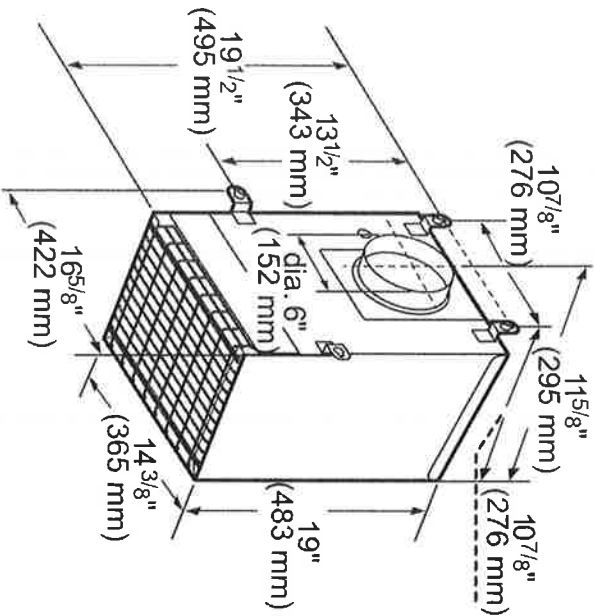
Lot 98



| MODEL | DESCRIPTION | ELECTRIC LOAD | | | | | |
|----------|---------------------|---------------|----------|---------|----------|---------|----------|
| | | VTN630W | VTN1090W | VTI610W | VTI1010W | VTR630W | VTR1030W |
| HPIN54WS | 54" Pro Island Hood | Amps | 4.6 | 8.0 | 6.5 | 8.4 | 11.9 |
| | | Watts | 552 | 960 | 780 | 1,008 | 1,428 |

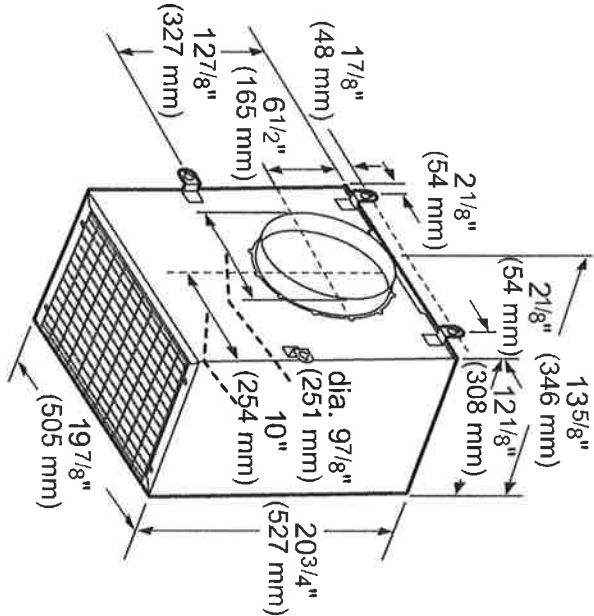
REMOTE BLOWERS (MOUNTED TO ROOF OR EXTERNAL WALL)

VTR630W-600 CFM



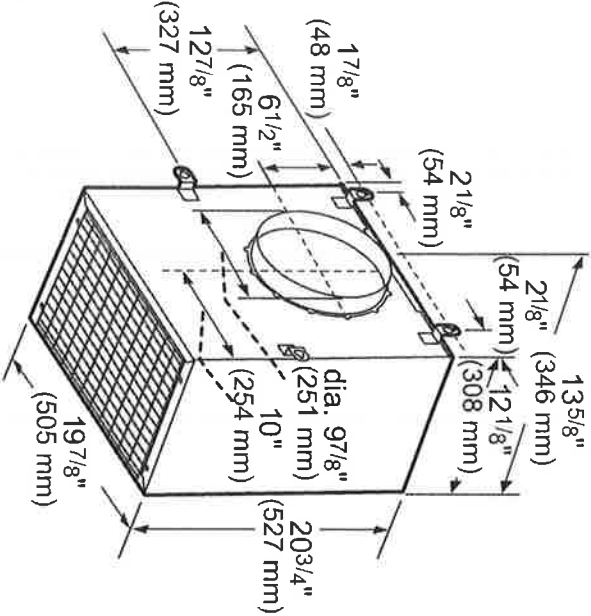
measurements in inches and mm

VTR1030W-1000 CFM



measurements in inches and mm

VTR1330W-1300 CFM



measurements in inches and mm

Lot 98

HPIN54WS
54-INCH BOX ISLAND HOOD
PROFESSIONAL® SERIES

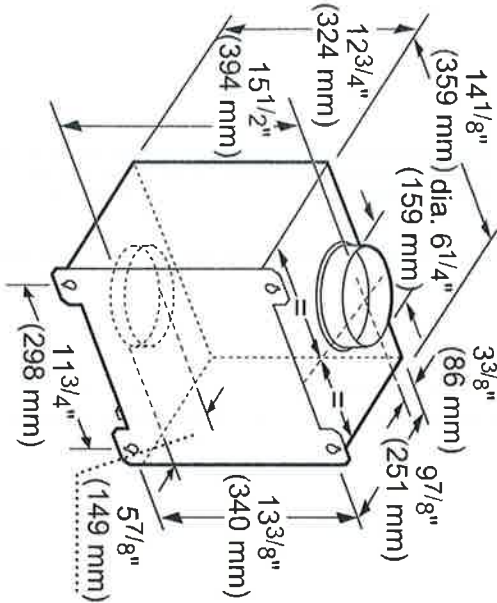
ZB SH



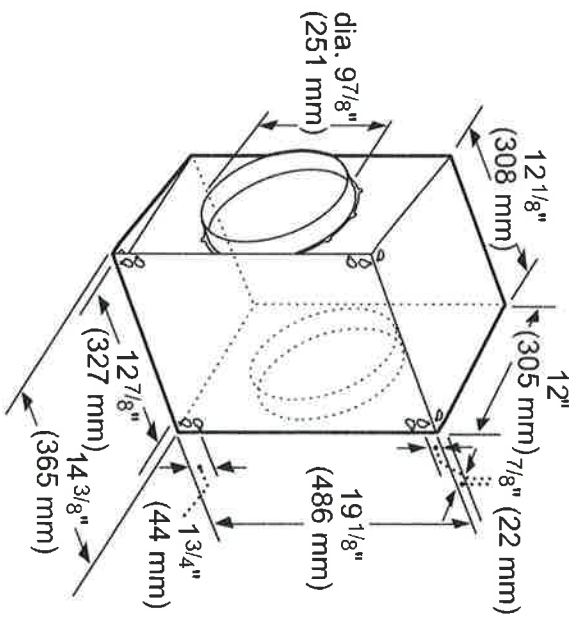
INLINE BLOWERS (MOUNTED BETWEEN KITCHEN AND EXTERNAL WALL)

VTI610W-600 CFM

VTI1010W-1000 CFM



measurements in inches and mm

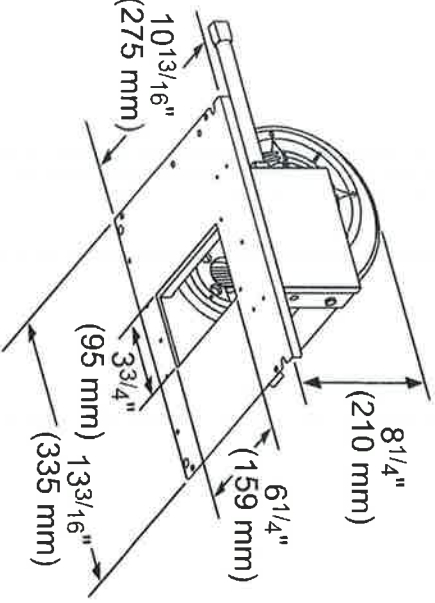


measurements in inches and mm

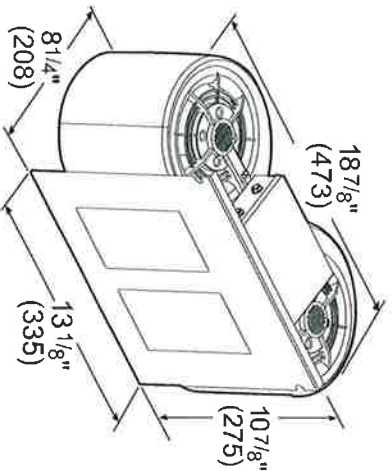
INTEGRATED BLOWERS (MOUNTED IN HOOD)

VTN630W-600 CFM

VTN1090R-1000 CFM



measurements in inches (mm)



measurements in inches and mm

Lot 98

HPIN54WS
54-INCH BOX ISLAND HOOD
PROFESSIONAL® SERIES

28 54



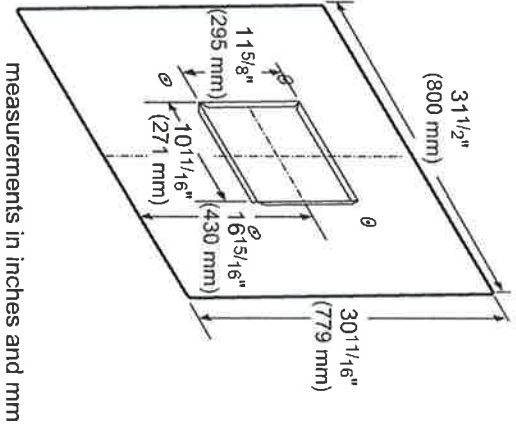
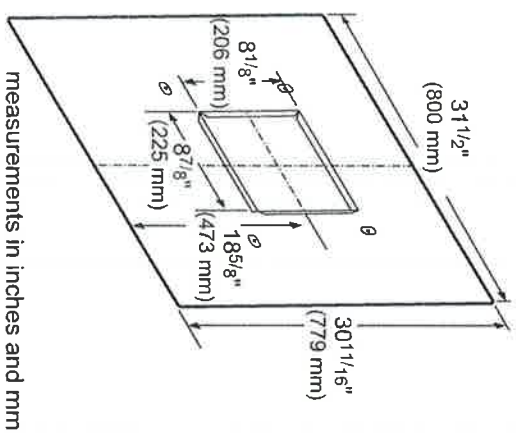
REMOTE BLOWER ACCESSORIES

ROOFPLATE-RFPILT600P

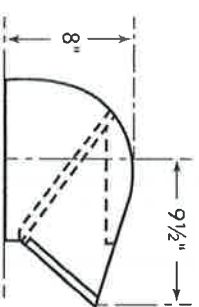
ROOFPLATE-RFPILT1000P

EXTNCB25W

For use with the following Inline and Remote Blowers: VTR630W, VTR1030W, VTR1330W, VT1610W, VT11010W



ROOF JACK & TRANSITION
ROOF JACK-RJ310



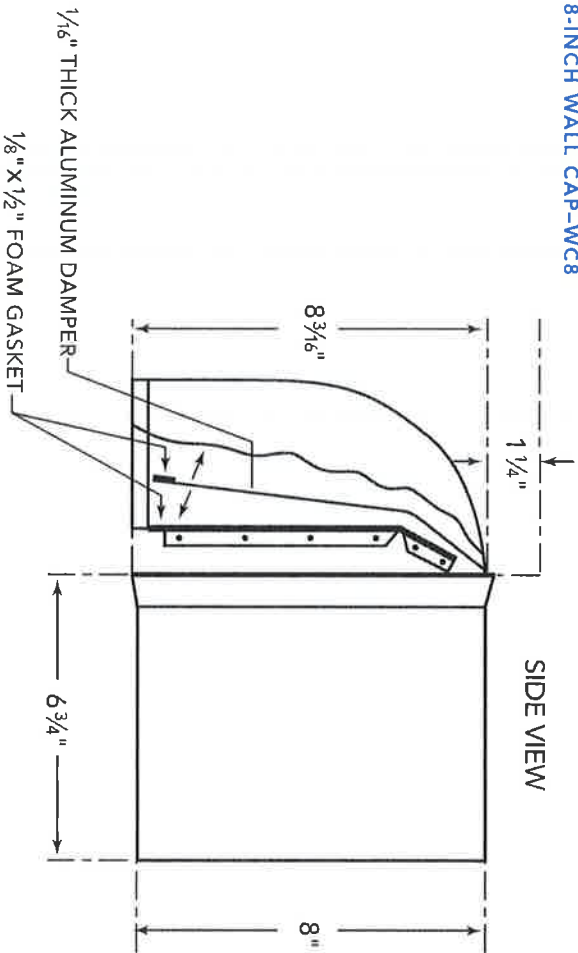
HPIN54WS
54-INCH BOX ISLAND HOOD
PROFESSIONAL® SERIES

28 51

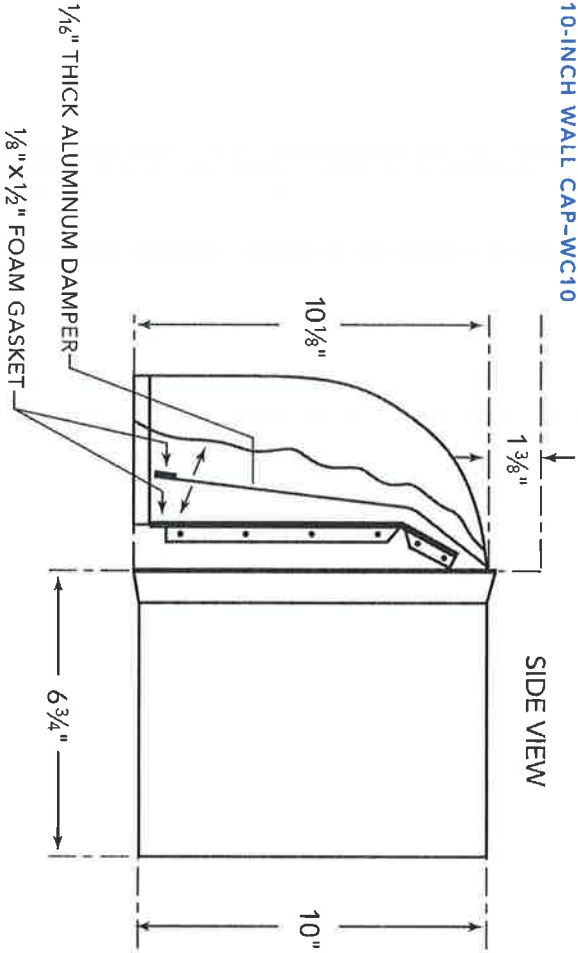


WALL CAPS

8-INCH WALL CAP-WC8



10-INCH WALL CAP-WC10



These warranties give you specific legal rights and you may have other rights that vary from state to state. Full warranty and limited warranty from date of installation. For complete warranty details, refer to your Use & Care manual, or ask your dealer.

Specifications are for planning purposes only. Refer to installation instructions and consult your countertop supplier prior to making counter opening. Consult with a heating and ventilation engineer for your specific ventilation requirements. For the most detailed information, refer to installation instructions accompanying product or write to Thermador indicating the model number. Specifications are correct at time of printing. Thermador reserves the right to change product specifications or design without notice. Some models are certified for use in Canada. Thermador is not responsible for products that are transported from the U.S. for use in Canada.

1 800 735 4328 | USA THERMADOR.COM | CANADA THERMADOR.CA | ©2018 BSH HOME APPLIANCES CORPORATION. ALL RIGHTS RESERVED

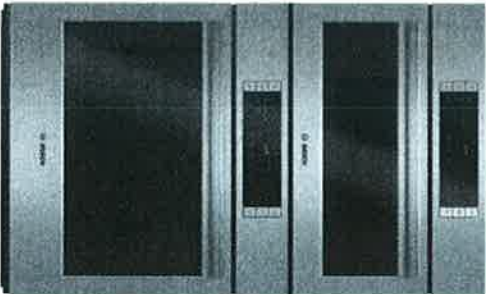
Lot 98

28 SH



Double Oven

30" Speed Combination Oven
800 Series - Stainless Steel
HBL8752UC



Introducing a Newly Designed and Engineered Bosch Combination Oven Featuring a Speed Oven and Wall Oven with a Smooth-Close Door.

- The Bosch Speed Oven Cooks Faster than a Traditional Oven and Can Also be Used as a Microwave.
- Dampened Hinges Softly and Quietly Guide the QuietClose™ Door Shut.
- A Full-Extension Telescopic Rack Offers Safe Access to the Oven Cavity.
- Touch Control with SteelTouch™ Buttons Makes Operating the Oven Easier.
- The Wall Oven is Designed to be Installed Flush with your Cabinetry.

Technical Data

| | |
|--|---|
| Cooking mode : | Combined operation, Half width variable grill, Hot Air, Hot air grilling, Microwave, warming |
| Cooking method second cavity : | 3rd element convection, Convection Bake, Convection Broil, Convection Roast, Dough proving setting, Pizza setting, Top/bottom heating, Top heating, 1/3 bottom heat, Variable small-area grill, Warming |
| Integrated Cleaning system : | No |
| Number of interior lights : | 1 |
| Included accessories : | |
| 1 x oven racks /lower, 1 x temperature probe | /lot |
| Bake Element Wattages cavity 1 (W) : | 0 |
| Convection Element Wattages cavity 1 (W) : | 1700 |
| Microwave Wattages (W) : | 950 |
| UPC code : | 825225926962 |
| Product color : | Stainless steel |
| Energy source : | Electric |
| Watts (W) : | 9600 |
| Current (A) : | 40 |
| Volts (V) : | 208-240 |
| Frequency (Hz) : | 60 |
| Approval certificates : | CSA |
| Power cord length (in) : | 50" |
| Power cord length (cm) : | 127 |
| Appliance Dimensions (h x w x d) (cm) : | 124.4 x 75.5 x 62.2 |
| Required cutout size (HXWxD) (in) : | 48 5/8" x 28 1/2" x 23 1/2" |
| Overall appliance dimensions (HXWxD) (in) : | |
| 49" x 29 3/4" x 24 1/2" | |
| Overall appliance dimensions (HXWxD) (mm) : | |
| 1244 x 755 x 622 | |
| Product packaging dimensions (HXWxD) (in) : | |
| 55 3/4" x 34" x 31 1/2" | |
| Net weight (lbs) : | 294 |
| Net weight (kg) : | 133.0 |
| Gross weight (lbs) : | 328 |
| Gross weight (kg) : | 149.0 |
| Included accessories | |
| 1 x oven racks /lower | |
| 1 x temperature probe /lower | |
| Optional accessories | |
| HEZTR301 : Telescopic Oven Rack 30" | |

Lot 98



BOSCH

Double Oven

30" Speed Combination Oven
800 Series - Stainless Steel
HBL8752UC

Introducing a Newly Designed and Engineered Bosch Combination Oven Featuring a Speed Oven and Wall Oven with a Smooth-Close Door.

- Speed oven: For Additional Details Please Review SKU HMC80252UC

Design

- Touch control with SteelTouch™ Buttons for Easier Operation of the Oven

Performance

- 12 Specialized Cooking Modes - Gourmet Cooking Made Easy
- Custom Cooking Modes: Pizza, Pie, Warm and Proof
- Genuine European Convection
- Temperature Conversion for Convection Cooking
- Meat Probe Takes Guesswork out of Cooking
- Fast Preheat Reduces Preheat Time

Efficiency

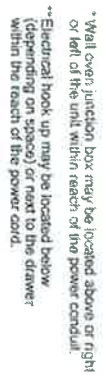
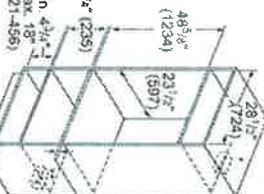
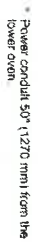
- EcoClean™ 2-Hour Self-Clean Cycle

Convenience

- Cut Outs Compatible with Most Market Competitors
- Two Oven Lights to Better Monitor Cooking Progress
- Timer with Cook Time and Delay Start Function
- Extra Large Door Window for Easy Monitoring of Cooking Process
- Star-K certified. 100°-450° F

Capacity

- Large Capacity at 4.6 Cu Ft.
- Recessed 8 Pass Broil Element for Increased Capacity and Safety



Lot 98
2B SH
Thermador

PCG486WL
48-INCH GAS RANGETOP WITH GRILL
PROFESSIONAL SERIES, PORCELAIN COOKTOP SURFACE



FEATURES & BENEFITS

- ★ Patented Pedestal Star® Burner with QuickClean Base® designed for easy surface cleaning and superior heat spread for any size pan
- ★ Precision simmering capabilities as low as 100°F (37.5 BTU) with 2 Extralow® Simmer burners
- ★ LED Downlighting—hidden discreetly above the control panel provides functional and stylish illumination
- ★ Pro Indoor Grill features 2 independent zones, ceramic briquettes and removable grates for easy cleaning
- Superior grill results—1,630 Watt indoor thermostatically controlled grill

| GENERAL PROPERTIES | |
|---|---|
| Controls | Metal Knobs |
| Sealed Burners | Yes |
| Grate Material | Cast Iron |
| BURNER PERFORMANCE | |
| Total Number of Cooktop Burners | 6 + Grill |
| Power of Front Left Burner (NG) | 18,000 and XLO (NG) |
| Power of Back Left Burner (NG) | 15,000 and XLO (NG) |
| Power of Back Center Burner (NG) | 15,000 (NG) |
| Power of Front Center Burner (NG) | 18,000 (NG) |
| Power of Center 12" Electric Griddle (W) | N/A |
| Power of Center 12" Electric Grill (W) | 1,630 W |
| Power of Back Right Burner (NG) | 15,000 (NG) |
| Power of Front Right Burner (NG) | 18,000 (NG) |
| TECHNICAL DETAILS | |
| Circuit Breaker (A) | 20 A |
| Volts (V) | 120 V |
| Frequency (Hz) | 60 Hz |
| Plug Type / Receptacle | 120V-3 Prong NEMA 5-20 |
| Power Cord Length (in) | 65" |
| Energy Source | Gas |
| Gas Type | Natural Gas 6" Water Column (14.9 mb) Min. (USA) |
| Alternative Gas Type | LP 11" Water Column (27.4 mb) Min. (USA) |
| Convertible To LP (Kit Required) | Yes |
| DIMENSIONS & WEIGHT | |
| Overall Appliance Dimensions (HxWxD) (in) | 8 1/16" x 47 15/16" x 25 13/16" |
| Required Cutout Size (HxWxD) (in) | 7 11/16" x 46 1/4" x 22 13/16" |
| Minimum Distance From Rear Wall (in) | 6" Min. to Combustible Surface with Flush Island Trim |
| Net Weight (lbs) | 172 lbs |
| ACCESSORIES (INCLUDED) | |
| 1 x Island Trim | |
| WARRANTY | |
| Limited Warranty, Entire Appliance, Parts and Labor | 2 Year |

★ THERMADOR® EXCLUSIVE



Lot 98

28 54

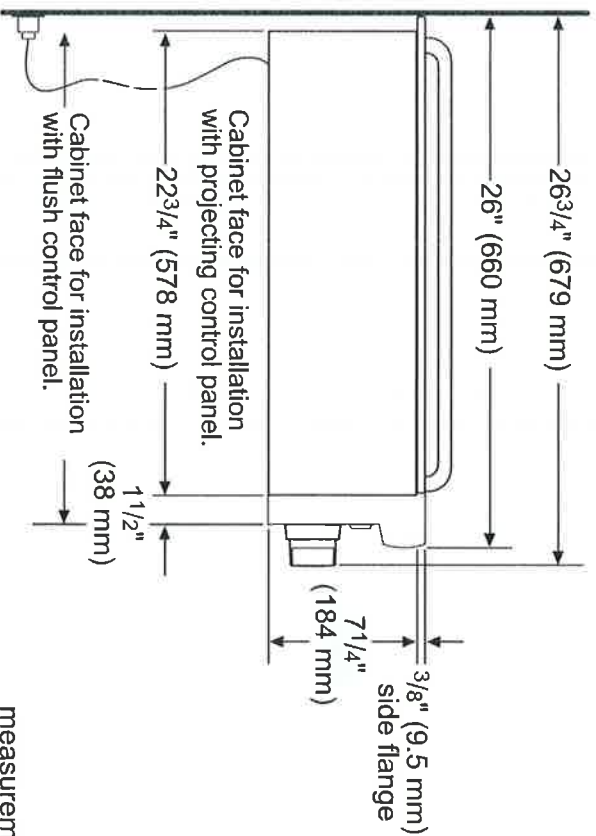


PCG486WL
48-INCH GAS RANGETOP WITH GRILL
PROFESSIONAL SERIES, PORCELAIN COOKTOP SURFACE

ACCESSORIES (OPTIONAL)

| | | | | | |
|---|---|---|--|---|---|
|  | PABRICKBKN Black Ceramic Briquettes with Basket |  | PAGRIDDLEW 12" Pro Griddle Plate with Fusion Coating |  | PAGRIDDLE Griddle Sits on Top of Grates Over 2 Star Burners |
|  | PA12LCVRW 12" Pro Grill Cover |  | PA12CHPBLK 12" Cutting Board |  | PWOKRINGHC Wok Ring |
|  | PA48WLBC 10" Low Backguard |  | PAKNOBLUWR Metallic Blue Knob Kit |  | PALPKITHW LP Conversion Kit |

48" RANGETOP SIDE VIEW



measurements in inches (mm)

Lot 98

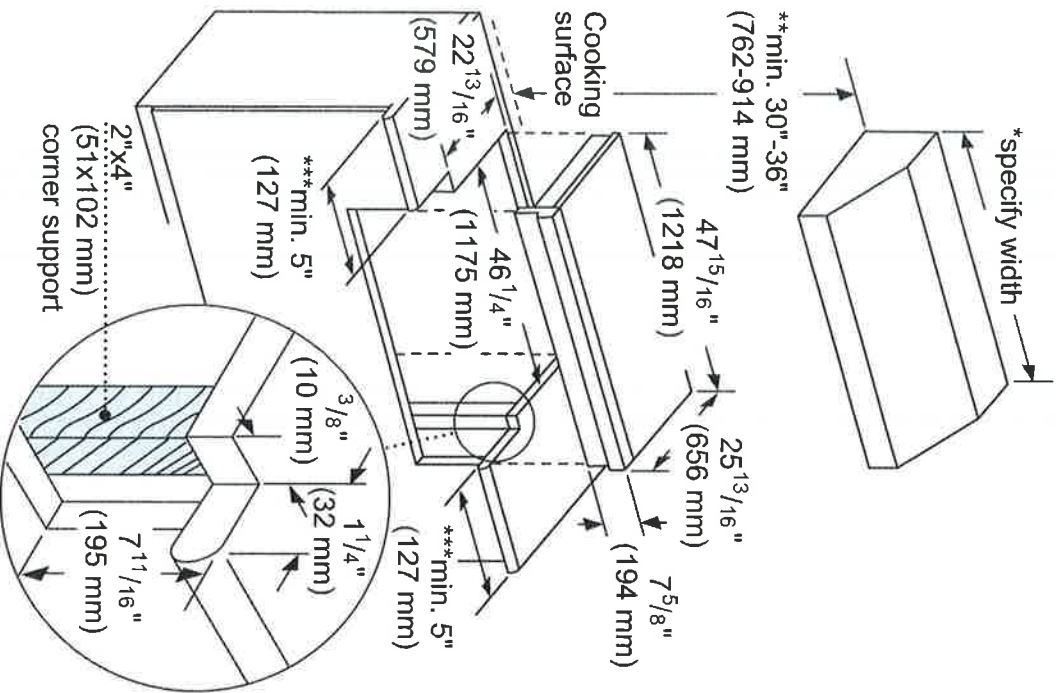
PCG486WL
48-INCH GAS RANGETOP WITH GRILL
PROFESSIONAL SERIES, PORCELAIN COOKTOP SURFACE

2B 5H



48-INCH RANGETOP CUTOUT DIMENSIONS

- * Minimum recommended hood width equals that of the range or cooktop.



- ** 36" minimum clearance from cooking surface to combustible surfaces.
 - *** 5" minimum clearance from cooking surface to combustible side wall.
- Note: Most hoods contain combustible components that must be considered when planning the installation.
- measurements in inches (mm)

Lot 98

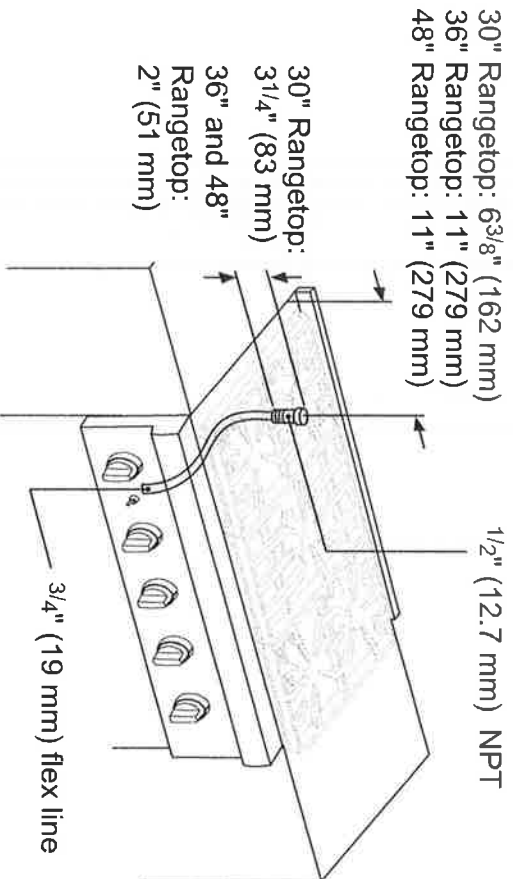
PCG486WL
48-INCH GAS RANGETOP WITH GRILL
PROFESSIONAL SERIES, PORCELAIN COOKTOP SURFACE



48-INCH RANGETOP GAS LOCATION

The gas and electrical supply must be located in an area that is accessible without requiring removal of the rangetop. The appliance electrical power cord and gas pipe connection are located on the left rear underside of the rangetop.

The junction box must be located within 3 feet (~900 mm) of the rangetop connection.



A manual valve must be installed to the appliance, in an accessible location from the front, for the purpose of shutting off the gas supply.

measurements in inches (mm)

NATURAL GAS REQUIREMENTS:

Inlet Connection: 1/2" NPT (min. 3/4" dia. flex line)

Supply Pressure: 6" min. to 14" max. water column (14.9 mb to 34.9 mb)

Manifold Pressure: 5" water column (12.5 mb)

PROPANE GAS REQUIREMENTS:

Inlet Connection: 1/2" NPT (min. 3/4" dia. flex line)

Supply Pressure: 11" min. to 14" max. water column (27.4 mb to 34.9 mb)

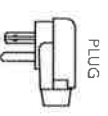
Manifold Pressure: 10" water column (24.9 mb)

ELECTRICAL SUPPLY

IMPORTANT: The cord supplied with gas rangetops having an electric griddle or grill requires a NEMA 5-20 receptacle as shown here. Local codes may require a different wiring method.



NEMA 5-20
RECEPTACLE



PLUG

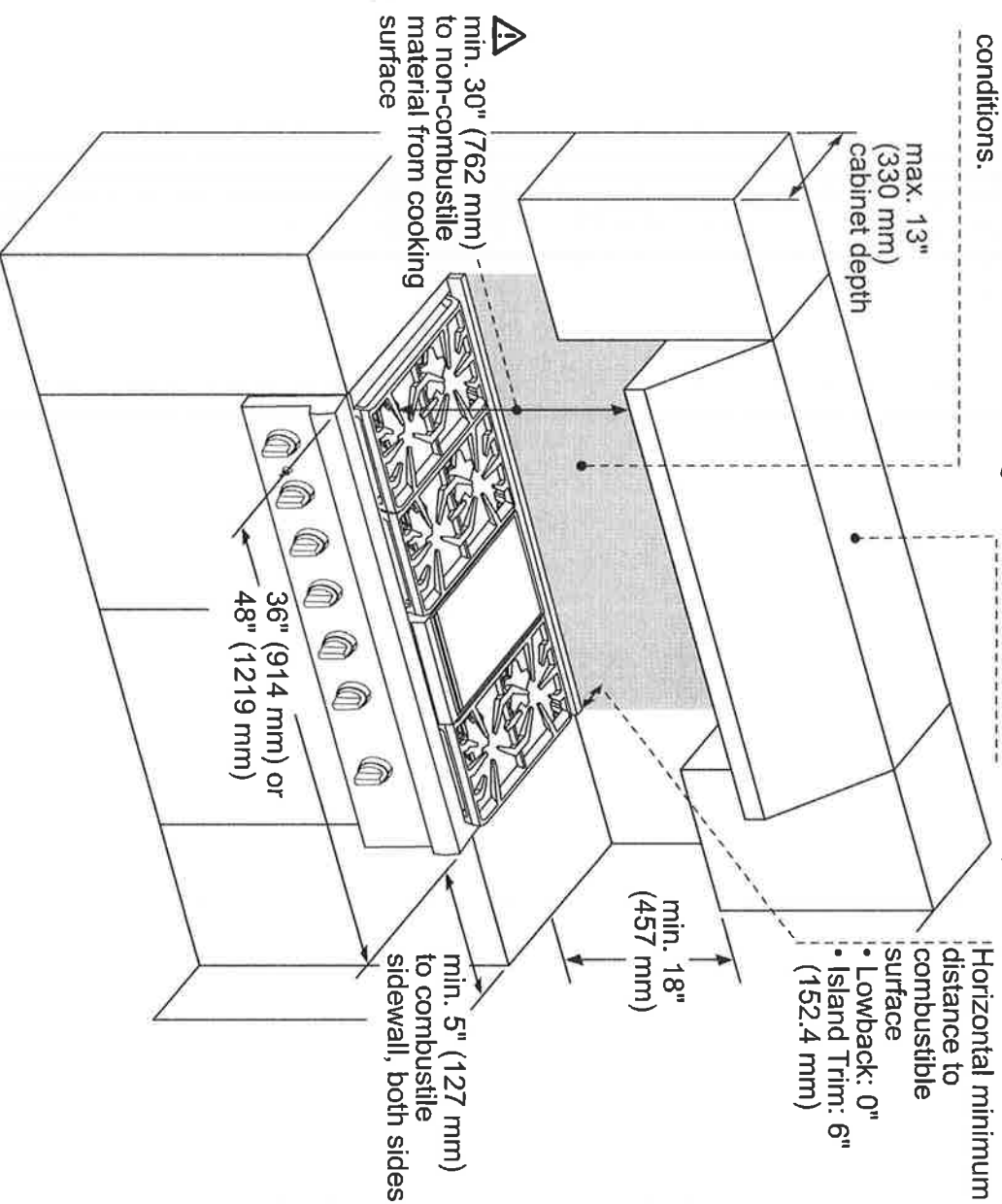
WARNING: This appliance is equipped with a three-prong grounding plug for protection against shock hazard and should be plugged directly into a properly grounded receptacle. DO NOT cut or remove the grounding prong from this plug. DO NOT ALTER THIS PLUG.

PCG486WL
48-INCH GAS RANGETOP WITH GRILL
PROFESSIONAL SERIES, PORCELAIN COOKTOP SURFACE

48-INCH RANGETOP CLEARANCES

The shaded area behind the rangetop indicates an opportunity to discolor the back wall under certain cooking conditions.

See the Ventilation Planning Guide for recommended hood options



⚠ As defined in the "National Fuel Gas Code" (ANSI Z223.1, Current Edition). Clearances from non-combustible materials are not part of the ANSI Z21.1 scope and are not certified by CSA. Clearances must be approved by the local codes and/or by the local authority having jurisdiction.

measurements in inches (mm)

NOTE: A 36-inch minimum clearance is required between the top of the cooking surface and the bottom of an unprotected cabinet. A 30-inch clearance can be used when the bottom of the wood or metal cabinet is protected by not less than 1/4 inch of a flame retardant material covered with not less than No. 28 MSG sheet steel, 0.015 inch (0.4 mm) thick stainless steel, 0.024 inch (0.6 mm) aluminum, or 0.020 inch (0.5 mm) thick copper.

These warranties give you specific legal rights and you may have other rights that vary from state to state. Full warranty and limited warranty from date of installation. For complete warranty details, refer to your Use & Care manual, or ask your dealer.

Specifications are for planning purposes only. Refer to installation instructions and consult your countertop supplier prior to making counter opening. Consult with a heating and ventilation engineer for your specific ventilation requirements. For the most detailed information, refer to installation instructions accompanying product or write to Thermador indicating the model number. Specifications are correct at time of printing. Thermador reserves the right to change product specifications or design without notice. Some models are certified for use in Canada. Thermador is not responsible for products that are transported from the U.S. for use in Canada.

1 800 735 4328 | USA.THERMADOR.COM | CANADA.THERMADOR.CA | ©2018 BSH HOME APPLIANCES CORPORATION. ALL RIGHTS RESERVED.

Electrical Requirements and Connection for Gas Units

⚠ WARNING

Before installing, turn power OFF at the service panel. Lock service panel to prevent power from being turned ON accidentally. Always disconnect appliance from the electric supply either by disconnecting power cord or shutting off the breaker at the service panel before servicing the appliance.

⚠ WARNING

This product must be properly grounded.

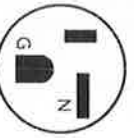
INSTALLER — show the owner the location of the circuit breaker. Mark it for easy reference.

Gas Unit Electrical Connection

Electrical Supply Circuit Requirements



NEMA 5-15



NEMA 5-20

The cord supplied with the gas ranges having an electric griddle or grill requires a NEMA 5-20 receptacle. All other gas units require a NEMA 5-15 receptacle.

| Model | Voltage | Dedicated Circuit | Phase |
|-----------|---------|-------------------|--------|
| Pxx305Wx | 120 VAC | 15 Amps | Single |
| Pxx366Wx | 120 VAC | 15 Amps | Single |
| Pxx364WDx | 120 VAC | 20 Amps | Single |
| Pxx364WLx | 120 VAC | 20 Amps | Single |
| Pxx486WDx | 120 VAC | 20 Amps | Single |
| Pxx486WLx | 120 VAC | 20 Amps | Single |

⚠ WARNING

Electrical Grounding Instructions

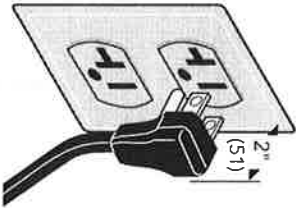
This appliance is equipped with a three-prong grounding plug for your protection against shock hazard and should be plugged directly into a properly grounded receptacle. **DO NOT** cut or remove the grounding prong from this plug.

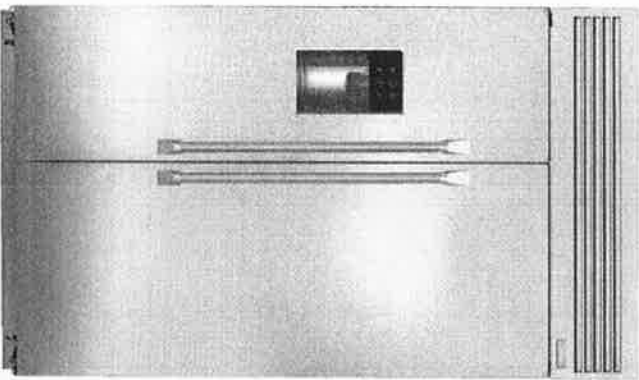
⚠ CAUTION

Improper grounding or reverse polarization will cause malfunction (such as continuous sparking of the burner igniters). This can damage the appliance and can create a condition of shock hazard. If the dedicated circuit is not correctly grounded and polarized, it is the responsibility and obligation of the installer and user to have the existing receptacle changed to a properly dedicated grounded and polarized receptacle. This must be accomplished in accordance with all applicable local codes and ordinances by a qualified electrician. In the absence of local codes and ordinances, the receptacle replacement shall be in accordance with the National Electric Code.

- Before you plug in an electrical cord, be sure all controls are in the OFF position.
- A neutral supply wire must be provided from the power source (breaker) because critical range components, including the surface burner spark re-ignition modules, require it to operate safely and properly.
- All 120 Volt models must be plugged into a mating 3-Prong, Grounding-Type Receptacle. The receptacle must be connected to a properly dedicated grounded and polarized electrical power supply rated at 120VAC, Single Phase, 60Hz.
- Observe all governing codes and ordinances when grounding. In the absence of these codes or ordinances observe National Electrical Code ANSI/NFPA No. 70 current issue, or the relevant Canadian Electric Code, CSA C22.1-02.
- Power cord and receptacle should protrude no more than 2" (51 mm) from the rear wall.

NOTE: Plug styles may vary.





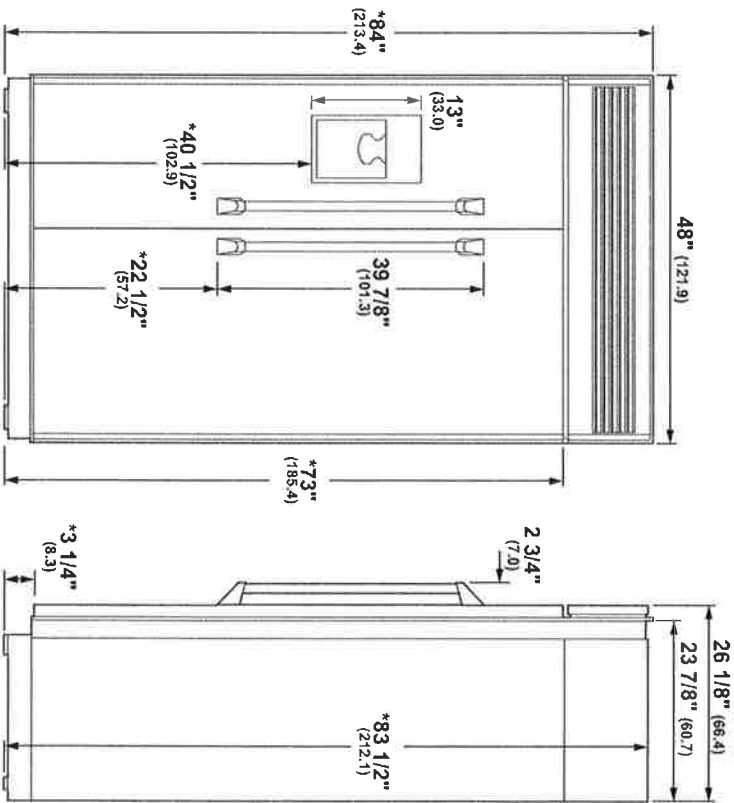
SPECIFICATIONS

| | |
|-----------------------|--|
| Overall Width | 48" (121.9 cm) |
| Overall Height | 84" (213.4 cm) |
| Overall Depth | 26 1/8" (66.4 cm) |
| Door Clearance | 28 5/8" (72.7 cm) |
| Cutout Width | 47 1/2" (120.7 cm) |
| Cutout Height | 83 1/2" - 84 1/2" (212.1 - 214.6 cm) |
| Cutout Depth | 24" (61.0 cm) |
| Plumbing Requirements | 1/4" OD copper tubing or GE SmartConnect kit |
| Shipping Weight | 800 lb |

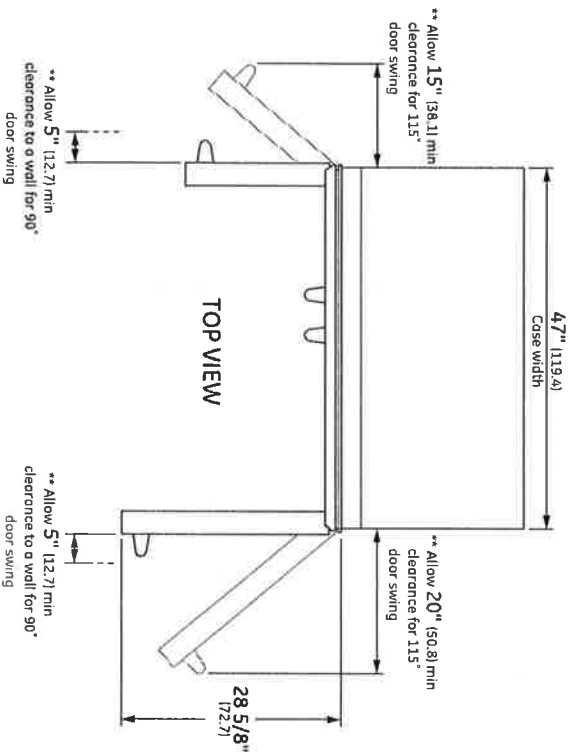
ATTENTION ELECTRICIAN:

A 115 volt 60Hz., 15 or 20 amp power supply is required. An individual properly grounded branch circuit or circuit breaker is recommended. Install a properly grounded 3-prong electrical receptacle recessed into the back wall.

OVERALL DIMENSIONS



* Shipping height. Use leveling legs and wheels for maximum 1" height adjustment from shipping height.



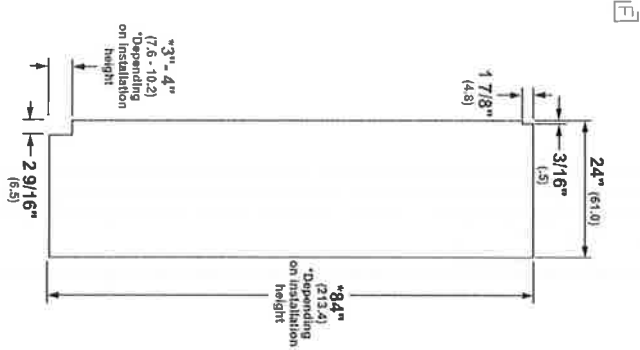
** These refrigerators are equipped with a 2-position door stop. The factory-set 130° door swing can be adjusted to 90° if clearances to adjacent cabinets or walls is restricted. Allow full 130° door swings for pan removal. If the 90° door stop position is used, pan access is maintained, but pan removal is restricted.

Dimensions in parentheses are in centimeters unless otherwise noted. Actual product dimension may vary due to manufacturing tolerances.

MONOGRAM

MONOGRAM 48" BUILT-IN SIDE-BY-SIDE REFRIGERATOR ZISP480DKSS

CUSTOM SIDE PANELS



NOTES

- Side panels must be used whenever the sides of the refrigerator will be exposed. The 1/4" side panels will slip into the side case trim. Secure the panels to the refrigerator with stick-on hook and loop fastener strips. Order the side panels from the cabinet manufacturer.



Lot 98

2B 5A

MONOGRAM 48" BUILT-IN SIDE-BY-SIDE REFRIGERATOR

ZISP480DKSS

FEATURES AND BENEFITS

ADVANCED TEMPERATURE MANAGEMENT SYSTEM WITH MULTI-SHELF BRUSHED ALUMINUM AIR TOWER
Provides even distribution of air throughout the refrigerator

CLIMATE-CONTROL DRAWER
Allows you to express-chill beverages, express-thaw meats and select specific temperatures for perishable foods

WIFI CONNECT
Enjoy the convenience and freedom of wirelessly controlling functions from your smartphone

LED LIGHTING
Light columns in the freezer and fresh food compartments extend the full length of the interior and LED lighting located inside the vegetable and climate-control drawers illuminate contents without compromising space

COLOR-MATCHED DISPENSER WITH PROXIMITY SENSOR
Designed to accommodate glassware of all sizes, from pitchers to tumblers, control graphics light up as you approach and automatically switch off when you walk away

GE® WATER FILTER
Has been moved from the fresh food compartment to the overhead cabinet, where it is discreetly out of sight

DELI DRAWER ON FULL-EXTENSION SLIDES
Keeps meats, cheeses and other everyday foods within easy reach

HUMIDITY-CONTROLLED VEGETABLE DRAWER
Helps preserve the freshness of foods

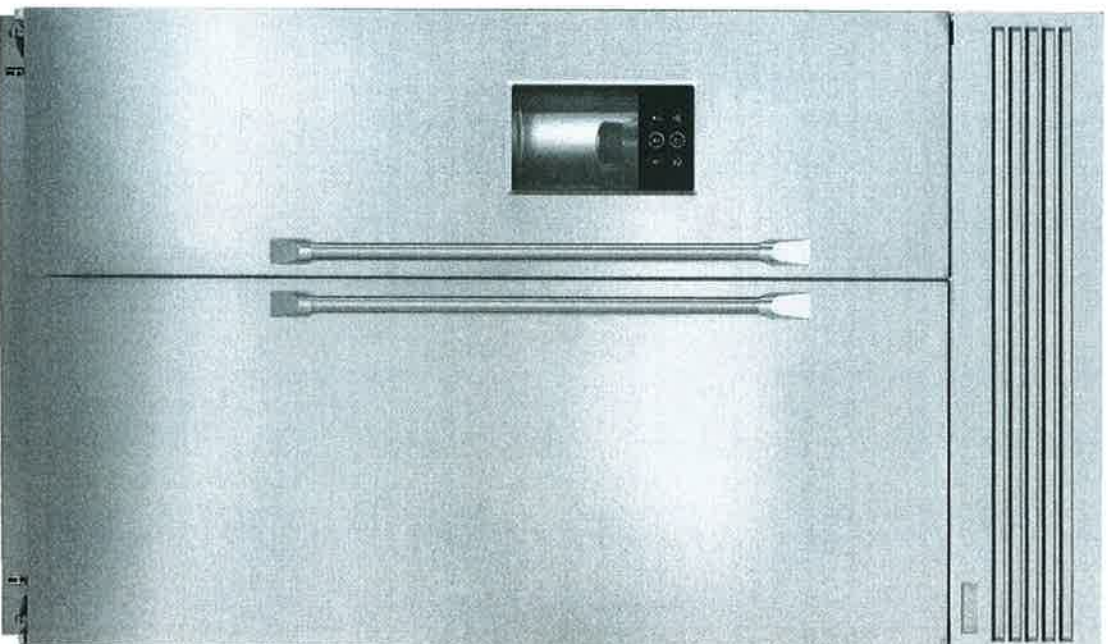
ADJUSTABLE GLASS SHELVES
Easily accommodate party trays and platters

GALLON-SIZE DOOR BIN
Holds milk containers, two-liter bottles and pitchers

ADJUSTABLE DOOR BINS
Can be moved to one of two positions in seven locations

DAIRY BIN WITH CENTER DIVIDER
Has a unique magnetic seal that locks in freshness

FILTER-CHANGE INDICATOR LIGHT
Located on the upfront control panel, provides a visual reminder when it's time to replace the filter for the water dispenser

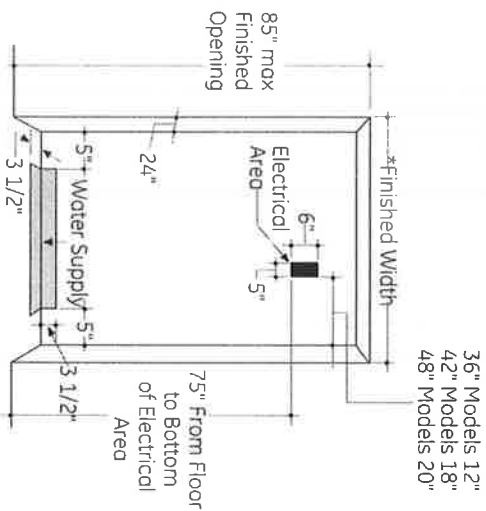


MONOGRAM

Product Specification Revised 7/17

Lot 98 28 SH

THE INSTALLATION SPACE



*The finished cutout width must be:
35-1/2" for 36" models
41-1/2" for 42" models
47-1/2" for 48" models

Water And Electrical Locations

The opening must be prepared with the electrical and the cold water supply located as shown.

The Cutout Depth Must Be 24"

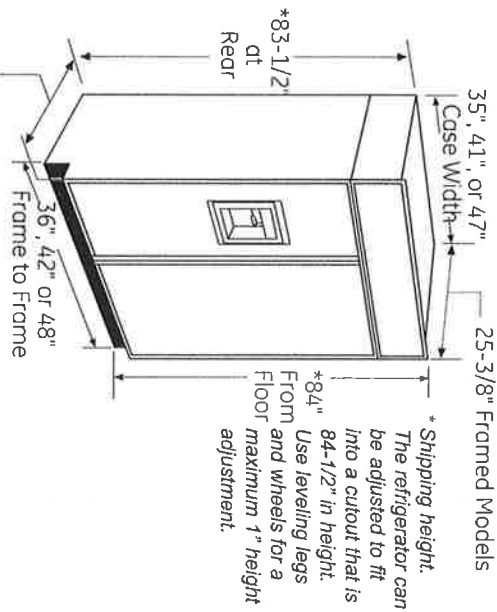
The refrigerator will project forward, slightly beyond adjacent cabinetry for standard installation.

Additional Specifications

- A 115 volt 60Hz., 15 or 20 amp power supply is required. An individual properly grounded branch circuit or circuit breaker is recommended. Install a properly grounded 3-prong electrical receptacle recessed into the back wall. Electrical must be located on the rear wall as shown.
- NOTE:** GFI (ground fault interrupter) is not recommended.

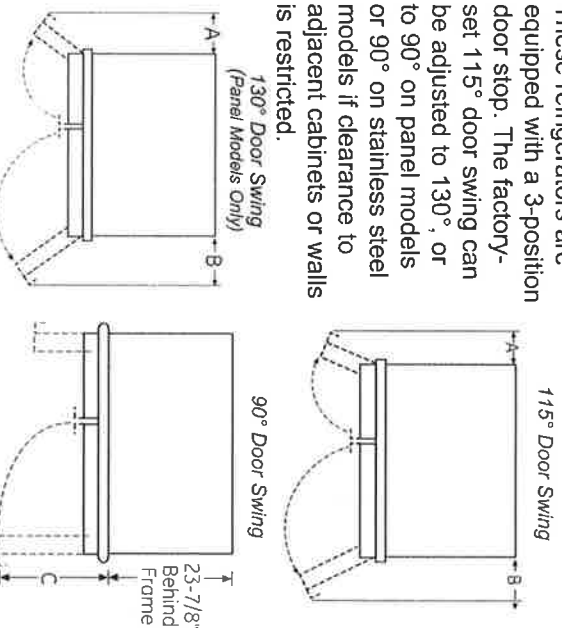
- The water line can enter the opening through the floor or back wall. The water line should be 1/4" O.D. copper tubing or SmartConnect™ kit between the cold water line and water connection location, long enough to extend to the front of the refrigerator. Installation of an easily accessible shut-off valve in the water line is required.

DIMENSIONS AND CLEARANCES



Product Clearances

These refrigerators are equipped with a 3-position door stop. The factory-set 115° door swing can be adjusted to 130°, or to 90° on panel models or 90° on stainless steel models if clearance to adjacent cabinets or walls is restricted.



| Models | A | B | C |
|--------|-----|-----|---------|
| 36" | 13" | 15" | 20-5/8" |
| 42" | 13" | 19" | 26-5/8" |
| 48" | 15" | 20" | 28-5/8" |

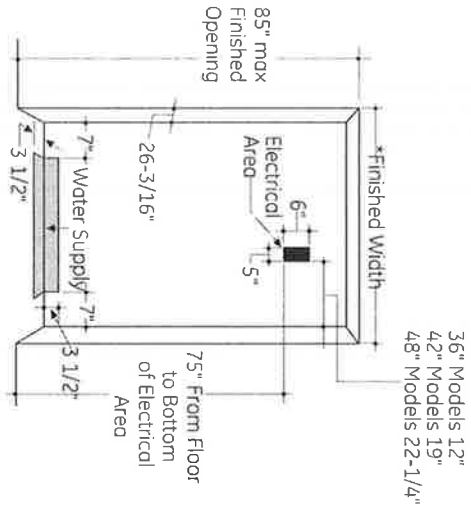
Panel Models Only: Allow minimum clearances for the freezer door (Dimension A) and fresh food door (Dimension B) for a full 130° door swing and to allow for pan removal.

For a 90° door swing, allow 4" min. clearance to a wall. If the 90° door stop position is used, pan access is maintained, but pan removal is restricted.

See the illustrations on pages 10 and 11 to determine door swing interaction with adjacent cabinets or countertops.

Lot 98
28 SH

THE INSTALLATION SPACE



*Finished cutout width must be:
39" for 36" models
45" for 42" models
51" for 48" models

Water And Electrical Locations

The opening must be prepared with the electrical and the cold water supply located as shown.

The Cutout Depth Must Be 26-3/16"

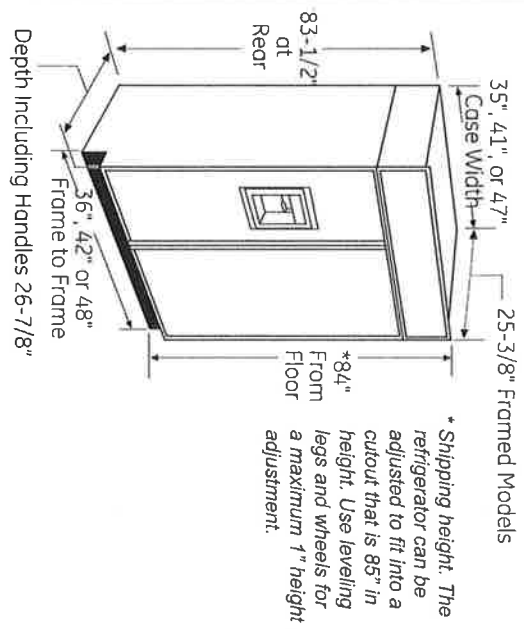
Wooden cleats are required for flush installation. See Side Cleats on page 27. If 3/4" Overlay panels w/ 90 degree door swing are to be used then cutout depth must be 26-1/4"

Additional Specifications

- A 115 volt 60Hz., 15 or 20 amp power supply is required. An individual properly grounded branch circuit or circuit breaker is recommended. Install a properly grounded 3-prong electrical receptacle recessed into the back wall. Electrical must be located on the rear wall as shown.
- NOTE:** GFI (ground fault interrupter) is not recommended.

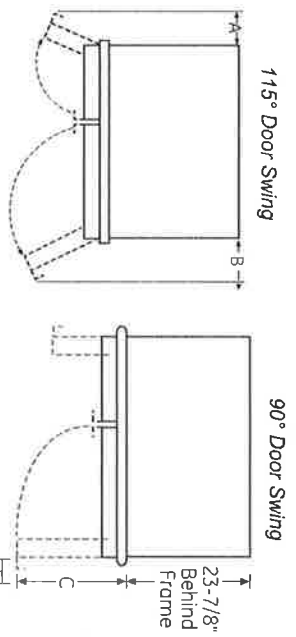
- The water line can enter the opening through the floor or back wall. The water line should be 1/4" O.D. copper tubing or SmartConnect™ kit between the cold water line and water connection location, long enough to extend to the front of the refrigerator. Installation of an easily accessible shut-off valve in the water line is required.

DIMENSIONS AND CLEARANCES



Product Clearances

These refrigerators are equipped with a 3-position door stop. The factory-set 115° door swing can be adjusted to 90° if clearance to adjacent cabinets or walls is restricted. Only standard installation can be adjusted to 130°.



| Models | A | B | C | |
|--------|-----|-----|---------|-----------------------------------|
| 36" | 13" | 15" | 20-5/8" | |
| 42" | 13" | 19" | 26-5/8" | *4" Stainless and Trimmed Models. |
| 48" | 15" | 20" | 28-5/8" | 5" Pro Series |

Allow minimum clearances for the freezer door (Dimension A) and fresh food door (Dimension B) for a full 115° door swing and to allow for pan removal.

For a 90° door swing, allow 4" min. clearance to a wall, for framed and stainless steel models. Allow 5" min. clearance for professional series models. If the 90° door stop position is used, pan access is maintained, but pan removal is restricted.