

CONSTRUCTION SUMMARY

North Oakville - 149 - 1 - ARCADIA (38-08) ELEV A

Registere Plan Number: Municipal Address: Closing: **30-Oct-19**

CONSTRUCTION

Inv.12 10	1 - GARAGE INSULATION - ALL WALLS AND CEILING
Line 68	Note:
2Jul19 / 26Aug19	

ELECTRICAL

Inv.12 1	1 - TELEPHONE AND CABLE LOCATION SKETCH. LOCATIONS MAY VARY DUE TO JOIST LOCATIONS
Line 58	Note:
2Jul19 / 26Aug19	
Inv.12 4	1 - KITCHEN: INSTALL RECEPTACLES - ADDITIONAL 15 AMP 120 VOLT RECEPTABLE- FOR GAS STOVE
Line 62	Note:
2Jul19 / 26Aug19	
Inv.12 5	1 - MASTER ENSUITE: INSTALL RECEPTACLES - DEDICATED 15 AMP 120 VOLT GFCI RECEPTABLE (INTERIOR). TO GO BESIDE TOILET, APPROX. 8" ABOVE FINISHED FLOOR
Line 63	Note:
2Jul19 / 26Aug19	
Inv.12 7	1 - KITCHEN: INSTALL VALANCE LIGHTING - UNDER CABINET - DOES NOT INCLUDE LIGHTING
Line 65	Note:
2Jul19 / 26Aug19	
Inv.12 8	6 - KITCHEN: INSTALL FOUR (4) CABINET LIGHTING - PUCK LIGHT FOR CABINET VALENCE (EACH). UNDER CABINETS FOR VALENCE LIGHTING. SEE SKETCH FOR APPROX. LOCATIONS
Line 66	Note:
2Jul19 / 26Aug19	
Inv.12 9	1 - KITCHEN: INSTALL RECEPTACLES - ADDITIONAL 15 AMP 120 VOLT RECEPTABLE- FOR FUTURE MICROWAVE IN CABINETS
Line 67	Note:
2Jul19 / 26Aug19	

FIREPLACE

Inv.12 12	1 - GREAT ROOM: INSTALL FIREPLACE - BLOWER - HEAT BLOWER - AUB. NOT FOR 2 - SIDED OR 3 - SIDED FIREPLACE
Line 71	Note:
2Jul19 / 26Aug19	

GARAGE DOORS

Inv.12 13	1 - GARAGE: UPGRADE STANDARD GARAGE DOORS TO AMARR 200 SERIES (STEEL AND INSULATED) GARAGE DOORS
Line 72	Note:
2Jul19 / 26Aug19	

HVAC

Inv.12 6	1 - KITCHEN: INSTALL GAS PIPING AND OTHER - GAS LINE R/I FOR MAIN FLOOR - STOVE - UP TO 3/4 INCH LINE
Line 64	Note:
2Jul19 / 26Aug19	



CONSTRUCTION SUMMARY

North Oakville - 149 - 1 - ARCADIA (38-08) ELEV A

Registere Plan Number: Municipal Address: Closing: 30-Oct-19

Inv.12	1 - AIR CONDITIONER AND FLOW - THROUGH HUMIDIFIRE AND MEDIA FILTER - ANX13 -
11	13 SEER - R - 410A - 2.5 TON - WITH FLOW THRU HUMIDIFIER AND 5 INCH MEDIA FILTER
Line 70	Note:
2Jul19 / 26Aug19	

MISCELLANEOUS

Inv.12	1 - Purchaser has attended a Structural appointment at the Decor Centre & has DECLINED any additional
14	upgrades and accepts and acknowledges that there will be no further structural
Line 353	changes/additions/deletions to be made upon signing on August 23, 2019
Note:	
2Jul19 / 26Aug19	
Inv.12	1 - Purchasers are aware & accepts that ANY changes made to upgrades after signing this Purchasers
15	Extra Form are subject to a minimum administration fee of \$500. PLUS a 10% holdback fee
Line 354	Note:
2Jul19 / 26Aug19	

PLUMBING

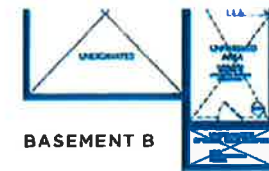
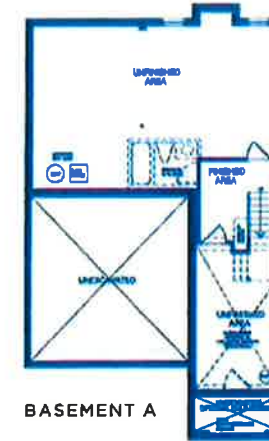
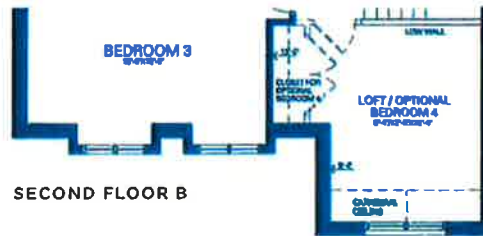
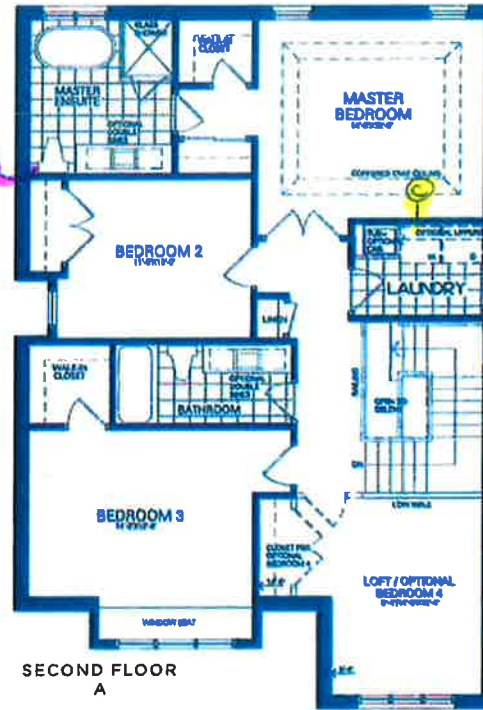
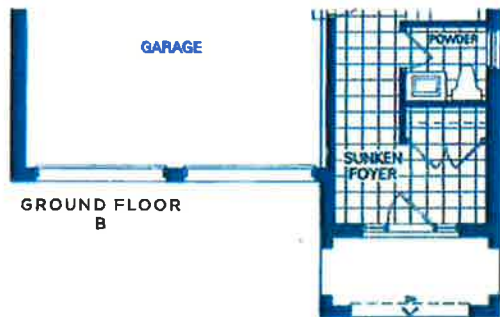
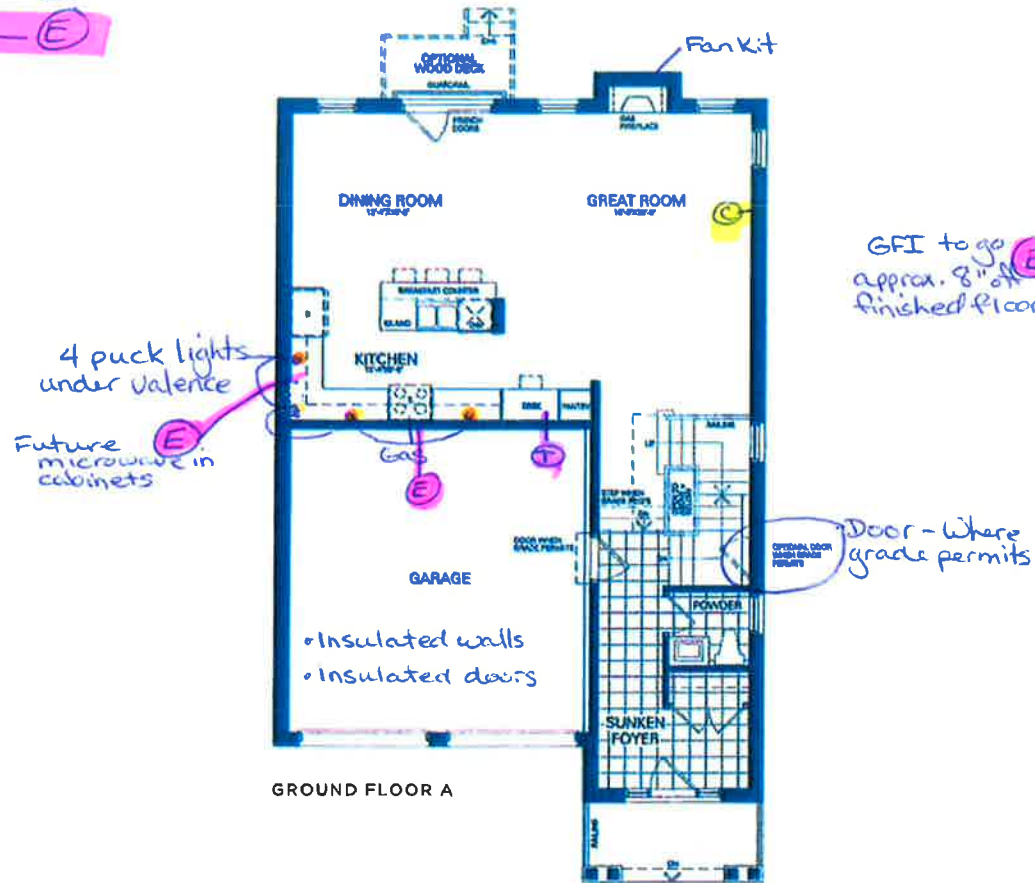
Inv.12	1 - BACKFLOW PREVENTER VALVE
3	
Line 61	Note:
2Jul19 / 26Aug19	

VACCUM/BELL

Inv.12	1 - ATTIC: INSTALL CONDUIT - 1 1/4" ORANGE FLEX CONDUIT APPROX. 15FT FOR ATTIC
2	
Line 59	Note:
2Jul19 / 26Aug19	

Telephone — (T)
 Cable — (C)
 Electrical — (E)

Lot 149
 July 2, 2019



Arcadia

Elevation A

2,140 Sq.ft.

Includes 70 Sq.ft. of Finished Basement

Elevation B

2,125 Sq.ft.

Includes 70 Sq.ft. of Finished Basement

Disclaimer: All dimensions are approximate and subject to normal construction variances. Dimensions may exceed the useable floor area. Sizes and specifications subject to change without notice. Furniture is displayed for illustration purposes only and does not necessarily reflect the electrical plan for the suite. Suites are sold unfinished. Balcony and facade variations may apply, contact a sales representative for further details. E.O.E. ©Valery Homes 2018. All rights reserved.

