



CONSTRUCTION SUMMARY

North Oakville - 115 - 1 - WILLOW VALLEY (43-02) ELEV B

Registere Plan Number: Municipal Address: Closing: 16-Jan-20

CABINETRY ACCESSORIES

Inv.2 15 Line 328	1 - KITCHEN: INSTALL VALANCE LIGHTING - UNDER CABINET - DOES NOT INCLUDE LIGHTING Note:
17Jun19 / 11Oct19	

CEILING

Inv.2 20 Line 340	1 - KITCHEN/BREAKFAST AREA: INSTALL COFFERED - TRAY CEILING - BREAKFAST AREA Note:
17Jun19 / 11Oct19	
Inv.2 21 Line 342	1 - GREAT ROOM: INSTALL COFFERED - TRAY CEILING - GREAT ROOM Note:
17Jun19 / 11Oct19	
Inv.2 22 Line 344	1 - FOYER: INSTALL COFFERED - TRAY CEILING - HALLWAY Note:
17Jun19 / 11Oct19	
Inv.2 23 Line 349	1 - DINING ROOM: INSTALL COFFERED - TRAY CEILING - DINING ROOM Note:
17Jun19 / 11Oct19	
Inv.2 24 Line 350	1 - LIVING ROOM: INSTALL COFFERED - TRAY CEILING - LIVING ROOM Note:
17Jun19 / 11Oct19	

ELECTRICAL

Inv.2 19 Line 339	1 - KITCHEN: INSTALL ELECTRICAL - ROUGH-IN FOR 30 - 40 AMP BUILT-IN WALL OVEN Note:
17Jun19 / 11Oct19	
Inv.2 14 Line 327	1 - LIVING ROOM: INSTALL CEILING LIGHT ROUGH IN - FOR 1 CEILING LIGHT, WITH SEPERATE SWITCH Note:
17Jun19 / 11Oct19	
Inv.2 7 Line 320	1 - GREAT ROOM: INSTALL RECEPTACLES - DEDICATED 15 AMP 120 VOLT RECEPTABLE-ABOVE FIREPLACE FOR FUTURE TV. SEE SKETCH. LOCATION MAY VARY SLIGHTLY DUE TO JOIST LOCATION Note:
17Jun19 / 11Oct19	
Inv.2 13 Line 326	1 - KITCHEN: INSTALL RECEPTACLES - UNDERMOUNT T-5 LED VALANCE LIGHT (\$200 PER LIGHT)- FOR VALANCE Note:
17Jun19 / 11Oct19	



North Oakville - 115 - 1 - WILLOW VALLEY (43-02) ELEV B

Registere Plan Number: Municipal Address: Closing: **16-Jan-20**

Inv.2 1	1 - TELEPHONE AND CABLE LOCATION SKETCH. LOCATION MAY VARY SLIGHTLY DUE TO
Line 331	Note:
17Jun19 / 11Oct19	

HVAC

Inv.2 17	1 - FILTRATION - HUMIDIFICATION - CONTROL - FLO - THRU HUMIDIFIER LARGE HE205 - 18
Line 330	GAL
	Note:
17Jun19 / 11Oct19	
Inv.2 12	1 - KITCHEN: INSTALL GAS PIPING AND OTHER - GAS LINE R/I FOR BASEMENT OR MAIN
Line 325	FLOOR - STOVE - UP TO 3/4 INCH LINE
	Note:
17Jun19 / 11Oct19	

MISCELLANEOUS

Inv.2 26	1 - Purchaser has attended a Structural appointment at the Decor Centre & has DECLINED any additional
Line 347	upgrades and accepts and acknowledges that there will be no further structural
	changes/additions/deletions to be made upon signing on August 23, 2019
	Note:
17Jun19 / 11Oct19	
Inv.2 27	1 - Purchasers are aware & accepts that ANY changes made to upgrades after signing this Purchasers
Line 348	Extra Form are subject to a minimum administration fee of \$500. PLUS a 10% holdback fee
	Note:
17Jun19 / 11Oct19	

PLUMBING

Inv.2 25	1 - MASTER ENSUITE: INSTALL POSI-TEMP TUB/SHOWER FAUCET WITH 3 FUNCTION
Line 351	TRANSFER VALVE/TRIM AND SLIDE BAR WITH HAND SHOWER
	MODEL: TL183EP/3372/128284/T4171/62320/3669EP/A725 CROME
	Note:
17Jun19 / 11Oct19	
Inv.2 18	1 - KITCHEN: INSTALL POT FILLER- BEHIND STOVE
	MOEN: MODERN 2 HANDLE POT FILLER FAUCET WITH DUAL SHUT-OFFS MODEL# S665.
Line 338	COLOUR TO BE CHOSEN AT COLOUR APPNT
	Note:
17Jun19 / 11Oct19	
Inv.2 8	1 - MASTER ENSUITE: INSTALL ROUGH-IN FOR SHOWER HEAD - RAINSHOWER HEAD MUST
Line 321	BE PURCHASED AT THE TIME OF COLOURS
	Note:
17Jun19 / 11Oct19	
Inv.2 9	1 - SERVERY: INSTALL BAR SINK IN SERVERY
Line 322	
	Note:
17Jun19 / 11Oct19	
Inv.2 10	1 - GARAGE: INSTALL EXTRA HOT FAUCET IN GARAGE, BESIDE STANDARD FAUCET
Line 323	
	Note:
17Jun19 / 11Oct19	



North Oakville - 115 - 1 - WILLOW VALLEY (43-02) ELEV B

Register Plan Number: Municipal Address: Closing: 16-Jan-20

Inv.2 11 Line 324	1 - BACKYARD: INSTALL EXTRA HOT FAUCET IN GARAGE, BESIDE STANDARD FAUCET Note:
17Jun19 / 11Oct19	

VACCUM/BELL

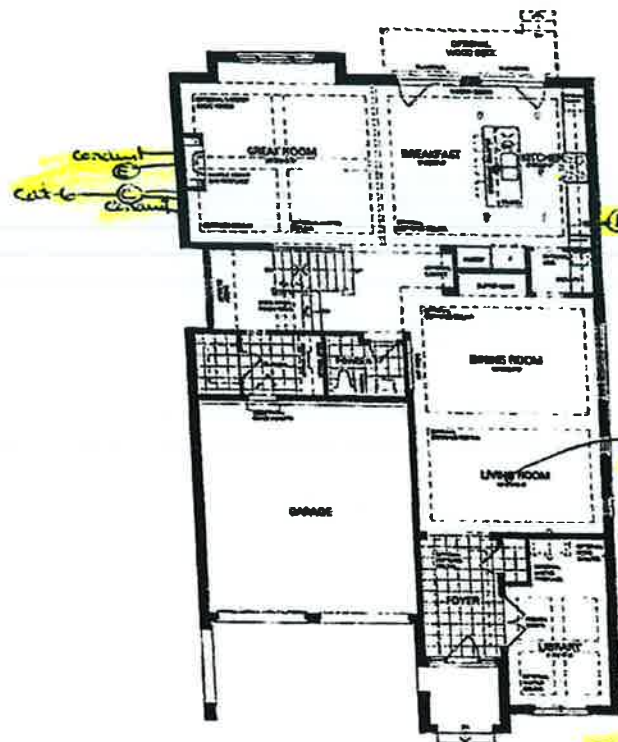
Inv.2 3 Line 316	1 - WIRELESS ACCESS POINT PACKAGE - 2-CAT6 NETWORK CABLES AND 2-UBIQUITI AC LITE ACCESS POINTS Note:
17Jun19 / 11Oct19	
Inv.2 4 Line 317	1 - GARAGE: CENTRAL VACUUM - CENTRAL VAC PIPING COMPLETE TO GARAGE - ONE OUTLET IN BASEMENT Note:
17Jun19 / 11Oct19	

Inv.2 5 Line 318	1 - ATTIC: INSTALL CONDUIT - 1 1/4" ORANGE FLEX CONDUIT APPROX. 15FT FOR ATTIC Note:
17Jun19 / 11Oct19	
Inv.2 6 Line 319	1 - GREAT ROOM: INSTALL CONDUIT - 1 1/4" ORANGE FLEX CONDUIT APPROX. 35FT FOR FIREPLACE- FOR FUTURE TV. SEE SKETCH FOR LOCATION. LOCATION MAY VARY SLIGHTLY DUE TO JOIST LOCATION Note:
17Jun19 / 11Oct19	

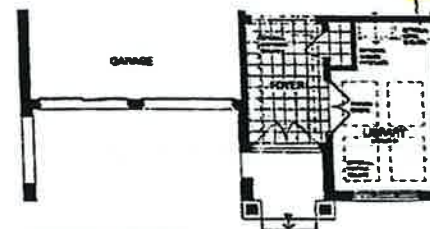
WINDOWS

Inv.2 2 Line 315	4 - BASEMENT: INSTALL FOUR (4) BASEMENT WINDOW - ENLARGE STANDARD WINDOW - 36 X 30 Note:
17Jun19 / 11Oct19	

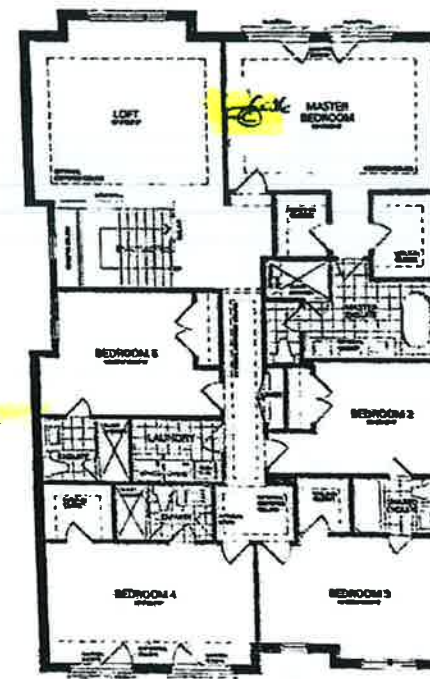
Lot 115
Aug 23, 19



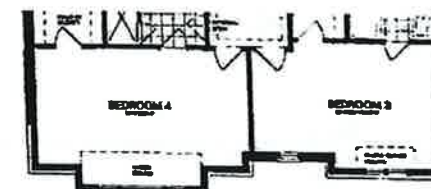
GROUND FLOOR A



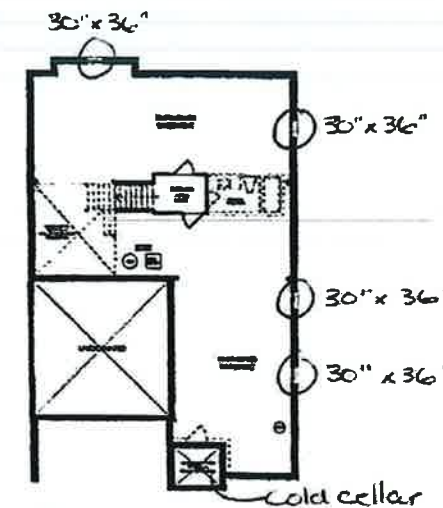
GROUND FLOOR B



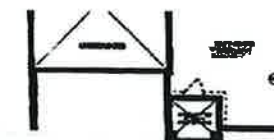
SECOND FLOOR A



SECOND FLOOR B



BASEMENT A



BASEMENT B

Willow Valley

Elevation A

3,623 Sq.ft.

Includes 47 Sq.ft. of Finished Basement

Elevation B

3,628 Sq.ft.

Includes 47 Sq.ft. of Finished Basement

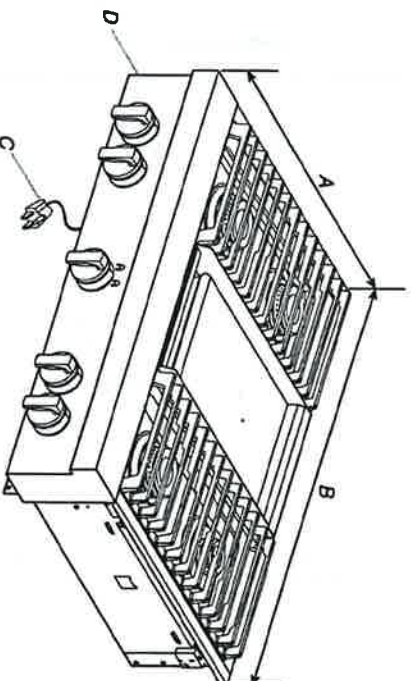
Disclaimer: All dimensions are approximate and subject to normal construction variances. Dimensions may exceed the usable floor area. Sizes and specifications subject to change without notice. Furniture is displayed for illustration purposes only and does not necessarily reflect the electrical plan for the suite. Sales are sold unhumiliated. Balcony and facade variances may apply, contact a sales representative for further details. E.A.O.S. ©Valery Homes 2016. All rights reserved.

VALERY
HOMES

36" (91.4 cm) models

Lot 115

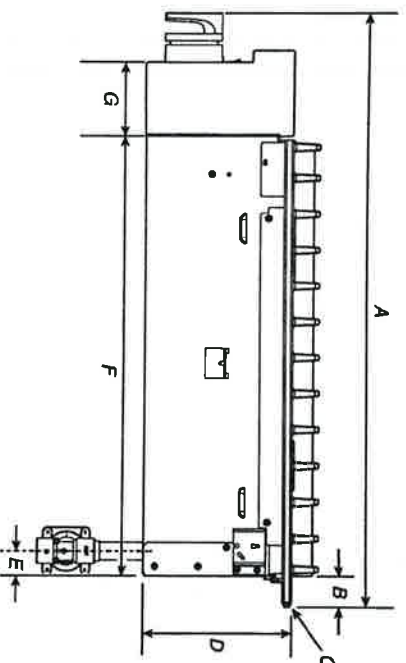
OK



- A. 27¹/₂" (68.9 cm)
- B. 35¹/₂" (90.8 cm)

- C. 3 prong grounding-type power supply cord
- D. Model/serial/rating plate (located on the underside of the cooktop burner base)

Side View of Cooktop

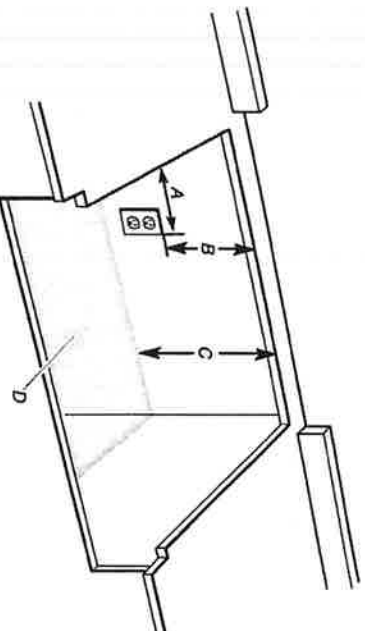


- A. 27¹/₂" (69.5 cm)
- B. 11¹/₂" (3.2 cm)
- C. Island trim or optional backguard
- D. 7¹/₁₆" (18.8 cm)

- E. Gas inlet is located 7¹/₁₆" (4.8 cm) from the back of the cooktop burner base and 4¹/₁₆" (12.4 cm) from left-hand side of the cooktop burner base.
- F. 22" (55.9 cm)
- G. 3¹/₁₆" (8.4 cm)

Lot 115

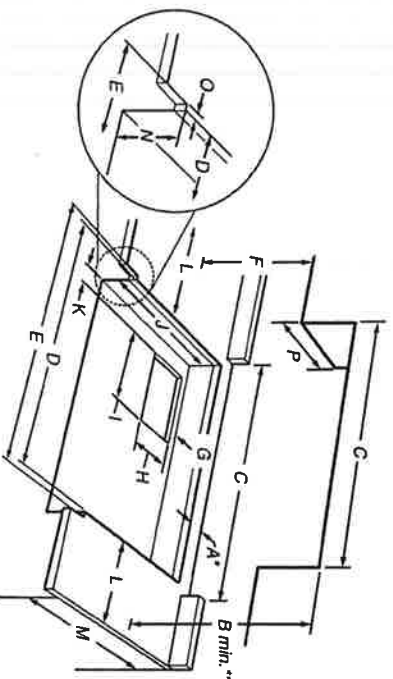
Gas and Electric Connection Locations



- A. Grounded 3 prong outlet should be located on left-hand side of the cutout 16" (40.6 cm) max. from enclosure sidewall.
B. 10" (25.4 cm) min. clearance from countertop to top of the outlet.
C. 14" (35.6 cm) countertop to the gas supply line.
D. Gas supply line should be located in this area on rear or side walls or the supply line can come up through the floor.
NOTE: Solid side and bottom of cutout enclosure not shown.

Cabinet Requirements

IMPORTANT: If installing a range hood or microwave hood combination above the cooking surface, follow the range hood or microwave hood combination installation instructions for dimensional clearances above the cooktop surface.



- A. See chart.
B. See chart.
C. See chart.
D. See chart.
E. See chart.
F. 18" (45.7 cm) min. clearance upper cabinet to countertop.
G. 3/4" (19 mm) back of cabinet cutout to gas opening cutout.
H. 67/8" (16.1 cm) gas opening cutout depth.
I. 131/2" (33.7 cm) gas opening cutout width.
J. 221/4" (56.5 cm) cabinet cutout depth.
K. 2" (5.1 cm) cabinet side to gas cutout.
L. 6" (15.2 cm) min. distance on both sides of the cooktop to the side wall or other combustible material above cooking surface.
M. 24" (61.0 cm) cabinet depth to countertop.
N. 71/4" (18.4 cm) cabinet depth to countertop.
O. Notch to be equal on both sides.
P. 13" (33.0 cm) upper cabinet depth.

Size	A* Cooktop Cutout to Back Wall	B** Cooktop to Cabinet	C Optional Backguard and Upper Cabinet Opening	D Cabinet and Countertop	E Countertop Only
30" (76.2 cm)	13/4" (4.4 cm)*	42" (106.7 cm)	30" (76.2 cm)	291/2" (74.3 cm)	291/2" (75.9 cm) for zero clearance
36" (91.4 cm)	13/4" (4.4 cm)*	58" (147.3 cm)	36" (91.4 cm)	351/2" (89.5 cm)	351/2" (90.8 cm) for zero clearance
48" (121.9 cm)	13/4" (4.4 cm)*	58" (147.3 cm)	48" (121.9 cm)	471/2" (120.0 cm)	471/2" (121.6 cm) for zero clearance

* NOTE: If back wall is constructed of a combustible material and a backguard is not installed, a minimum clearance of dimension A + 6" (15.2 cm) is required for all models.

** NOTES: Dimension "B" can be reduced by 6" (15.2 cm) when bottom of wood or metal cabinet is covered by not less than 0.025" (0.6 mm) flame retardant millboard covered with not less than No. 28 MSG sheet metal, 0.015" (0.4 mm) stainless steel, 0.024" (0.6 mm) aluminum, or 0.020" (0.5 mm) copper.

If installing a range hood above the cooktop, follow the range hood instructions for dimensional clearances above the cooktop surface.

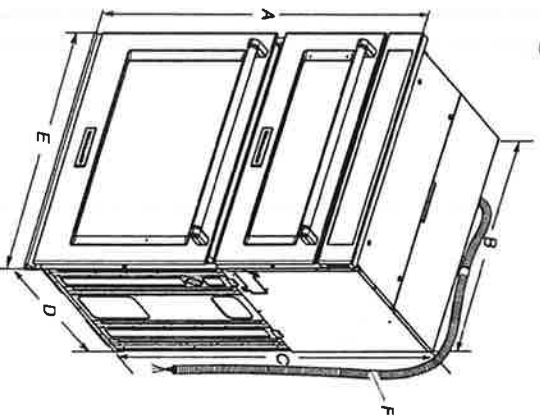
NOTE: Due to manufacturing factory tolerances, these are nominal dimensions. You may need to readjust to meet your clearance.

OK2

- Electrical supply junction box should be located 3" (7.6 cm) maximum below the support surface when the oven is installed in a wall cabinet. A 1" (2.5 cm) minimum diameter hole should have been drilled in the left rear corner of the support surface to pass the appliance cable through to the junction box.
 - Oven support surface must be solid, level and flush with bottom of cabinet cutout. Floor must be able to support a total weight (microwave and built-in oven) of 208 lbs (95 kg) for 27" (68.6 cm) models or 249 lbs (113 kg) for 30" (76.2 cm) models.
- IMPORTANT:** To avoid damage to your cabinets, check with your builder or cabinet supplier to make sure that the materials used will not discolor, delaminate or sustain other damage. This oven has been designed in accordance with the requirements of UL and CSA International and complies with the maximum allowable wood cabinet temperatures of 194°F (90°C).

Product Dimensions

27" and 30" (68.6 cm and 76.2 cm) Ovens

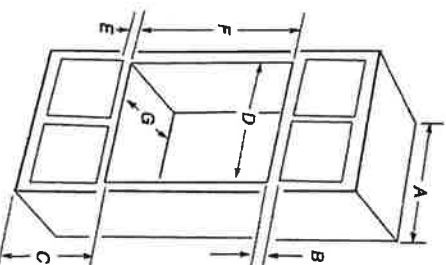


27" (68.6 cm) models	30" (76.2 cm) models
A, 42 3/4" (108.0 cm) overall height	A, 42 3/8" (108.0 cm) overall height
B, 25 3/4" (64.6 cm) recessed height	B, 28 3/8" (72.2 cm) recessed height
C, 41" (104.1 cm) recessed height	C, 41" (104.1 cm) recessed height
D, 23 1/2" (59.1 cm) max. recessed depth	D, 23 1/2" (59.1 cm) max. recessed depth
E, 27" (68.6 cm) overall width	E, 30" (76.2 cm) overall width
F, 46" (121.3 cm) flexible conduit length measured from the conduit clamp located at the rear of the oven. Do not remove the conduit clamp.	F, 46" (121.3 cm) flexible conduit length measured from the conduit clamp located at the rear of the oven. Do not remove the conduit clamp.

Lot 115

Cabinet Dimensions

27" and 30" (68.6 cm and 76.2 cm) Ovens



27" (68.6 cm) models	30" (76.2 cm) models
A, 27" (68.6 cm) min. cabinet width	A, 30" (76.2 cm) min. cabinet width
B, 1" (2.5 cm) top of cutout to bottom of upper cabinet door	B, 1" (2.5 cm) top of cutout to bottom of upper cabinet door
C, 19 1/2" (48.9 cm) bottom of cutout to floor is recommended. 4"-19 1/2" (10.2-48.9 cm) bottom of cutout to floor is acceptable.	C, 19 1/2" (48.9 cm) bottom of cutout to floor is recommended. 4"-19 1/2" (10.2-48.9 cm) bottom of cutout to floor is acceptable.
D, 25 1/2" (64.8 cm) cutout width	D, 28 1/2" (72.4 cm) cutout width
E, 1 1/2" (3.8 cm) min. bottom of cutout to top of cabinet door	E, 1 1/2" (3.8 cm) min. bottom of cutout to top of cabinet door
F, 41 5/8" (105 cm)* recommended cutout height	F, 41 5/8" (105 cm)* recommended cutout height
G, 24" (60.7 cm) cutout depth	G, 24" (60.7 cm) cutout depth

*NOTE: The cutout height can be between 41" and 41 1/2" (104.1 cm and 105.6 cm) for microwave/oven combination.

Electrical Requirements

If codes permit and a separate ground wire is used, it is recommended that a qualified electrical installer determine that the ground path and wire gauge are in accordance with local codes.

Check with a qualified electrical installer if you are not sure the oven is properly grounded.

This oven must be connected to a grounded metal, permanent wiring system.

Be sure that the electrical connection and wire size are adequate and in conformance with the National Electrical Code, ANSI/NFPA 70-latest edition or CSA Standards C22.1-94, Canadian Electrical Code, Part 1 and C22.2 No. 0-M91-latest edition, and all local codes and ordinances.

A copy of the above code standards can be obtained from:

National Fire Protection Association
1 Batterymarch Park
Quincy, MA 02269-7471
CSA International
8501 East Pleasant Valley Road
Cleveland, OH 44131-5575

Lot 115

Electrical Connection

To properly install your oven, you must determine the type of electrical connection you will be using and follow the instructions provided for it here.

- Oven must be connected to the proper electrical voltage, amperage, and frequency as specified on the model/serial/rating plate. See the following illustration.



A. Model/serial/rating plate

- Models rated from 7.3 to 9.6 kW at 240 volts (5.4 to 7.4 kW at 208 volts) require a separate 40-amp circuit. Models rated at 4.8 kW and below at 240 volts (3.6 kW and below at 208 volts) require a separate 30-amp circuit.
- A circuit breaker is recommended.
- Connect directly to the fused disconnect (or circuit breaker box) through flexible, armored or nonmetallic sheathed, copper cable (with grounding wire). See "Make Electrical Connection" section.

- Flexible conduit from the oven should be connected directly to the junction box.
- Do not cut the conduit. The length of conduit provided is for serviceability of the oven.
- A UL listed or CSA approved conduit connector must be provided.
- If the house has aluminum wiring, follow the procedure below:

1. Connect a section of solid copper wire to the ends of the flexible conduit leads.
2. Connect the aluminum wiring to the added section of copper wire using special connectors and/or tools designed and UL listed for joining copper to aluminum. Follow the electrical connector manufacturer's recommended procedure. Aluminum/copper connection must conform with local codes and industry accepted wiring practices.

For power requirements, refer to the following table.

Model	Voltage	Amperage (L1)*	Amperage (L2)*	Rating (W)
KOCE507E/	120/240	32	30	8000
KOCE500E				
KOCE507E/	120/208	30	28	6600
KOCE500E				

*Amperage values noted above are for information purposes only. The units are rated in watts.

INSTALLATION INSTRUCTIONS

Prepare Built-In Microwave/Oven Combination

1. Decide on the final location for the oven. Locate existing wiring to avoid drilling into or severing wiring during installation.

⚠ WARNING

Excessive Weight Hazard

Use two or more people to move and install oven.

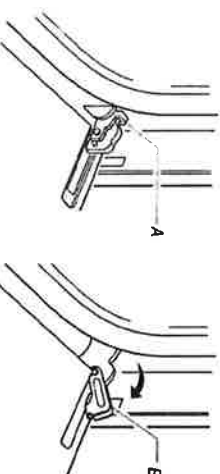
Failure to do so can result in back or other injury.

2. To avoid floor damage, set the oven onto cardboard prior to installation. Do not use handle or any portion of the front frame for lifting.
3. Remember to remove bottom vent from the foam packing on top of oven.
4. Remove the shipping materials and tape from the oven.
5. Remove the hardware package from inside the bag containing literature.
6. Remove and set aside racks and other parts from inside the oven.
7. Move oven and cardboard close to the oven's final location.

Remove Oven Door(s)

IMPORTANT: Use two hands to remove oven door.

1. Prior to removing the oven door, prepare a surface where you will place it. This surface should be flat and covered with a soft blanket, or use the corner posts from your packaging material.
2. Open the oven door.
3. Locate the oven door hinge locks in both corners of the oven door, and then rotate the hinge locks toward the oven door to the unlocked position. If the door hinge lock is not rotated fully (see illustration B), the door will not remove properly.



A. Oven door hinge lock in locked position

B. Oven door hinge lock in unlocked position