

## CONSTRUCTION SUMMARY

**Joshua Creek - 221-2      EDGEMERE (TH-03) B**

Registere Plan Number:    Municipal Address:

### BONUS

Inv.408 20	<b>1 - BONUS PACKAGE: \$5,000.00 WORTH OF UPGRADES FROM VALERY HOMES DECOR CENTRE IS BEING APPLIED TOWARD THE STRUCTURAL APPOINTMENT</b>
Line 8254	Note:
24May22 / 31May22	

### ELECTRICAL

Inv.408 5	<b>1 - FAMILY ROOM: INSTALL RECEPTACLES - DEDICATED 15 AMP 120 VOLT RECEPTABLE, ABOVE FIREPLACE, FOR TV</b>
Line 8201	Note:
24May22 / 31May22	

Inv.408 11	<b>1 - KITCHEN: INSTALL RECEPTACLES - DEDICATED 15 AMP 120 VOLT RECEPTABLE, ABOVE STOVE FOR FUTURE MICROWAVE</b>
Line 8207	Note:
24May22 / 31May22	

Inv.408 12	<b>1 - KITCHEN: INSTALL RECEPTACLES - ADDITIONAL 15 AMP 120 VOLT RECEPTABLE, FOR GAS STOVE</b>
Line 8208	Note:
24May22 / 31May22	

Inv.408 15	<b>6 - FAMILY ROOM: INSTALL SIX (6) POT LIGHTS - 4" LED NON-INSULATED CEILINGS. DELETE STANDARD LIGHTS</b>
Line 8249	Note:
24May22 / 31May22	

Inv.408 16	<b>4 - DINING ROOM: INSTALL FOUR (4) POT LIGHTS - 4" LED NON-INSULATED CEILINGS. DELETE STANDARD LIGHTS</b>
Line 8250	Note:
24May22 / 31May22	

Inv.408 17	<b>1 - BASEMENT: INSTALL ELECTRICAL - ROUGH-IN FOR 220 V RECEPTACLE. SEE SKETCH. LOCATION MAY VARY SLIGHTLY DUE TO JOIST LOCATION</b>
Line 8251	Note:
24May22 / 31May22	

### GARAGE DOORS

Inv.408 9	<b>1 - GARAGE: INSTALL OVERHEAD GARAGE DOOR - LIFTMASTER 8355W - 1/2 HP BELT - INCLUDES 2 REMOTES &amp; 1 KEYPAD - 8 FT</b>
Line 8205	Note:
24May22 / 31May22	

### HVAC

Inv.408 7	<b>1 - AIR CONDITIONER AND FLOW - THROUGH HUMIDIFIRE AND MEDIA FILTER - ANX13 - 13 SEER - R - 410A - 3.0 TON - WITH FLOW THRU HUMIDIFIER AND 5 INCH MEDIA FILTER</b>
Line 8203	Note:
24May22 / 31May22	

Inv.408 1	<b>1 - CAT 6-A LOCATION SKETCH. LOCATIONS MAY VARY LIGHTLY DUE TO JOIST LOCATIONS</b>
Line 8197	Note:
24May22 / 31May22	

Inv.408 13	<b>1 - KITCHEN: INSTALL GAS PIPING AND OTHER - GAS LINE R/I FOR MAIN FLOOR - STOVE</b>
Line 8209	Note:
24May22 / 31May22	

### INTERIOR DOORS & TRIM

# CONSTRUCTION SUMMARY

**Joshua Creek - 221-2      EDGEMERE (TH-03) B**

Registere Plan Number:    Municipal Address:

Inv.408 18	<b>24 - INSTALL UPGRADED HARDWARE THROUGHOUT HOUSE, TWENTY-FIVE (25) HANDLES, INCLUDES THE EXTERIOR DOORS</b>
Line 8252	PACE LINE, POLISHED CHROME
	Note:
24May22 / 31May22	

Inv.408 19	<b>1 - EXTERIOR DOOR: UPGRADE GRIP SET TO</b>
Line 8253	STRAIT, IN POLISHED CHROME
	Note:
24May22 / 31May22	

## MISCELLANEOUS

Inv.408 21	<b>1 - Purchaser has attended a Structural appointment at the Decor Centre &amp; has DECLINED any additional upgrades and accepts and acknowledges that there will be no further structural changes/additions/deletions to be made upon signing</b>
Line 8255	Note:
24May22 / 31May22	

## PLUMBING

Inv.408 14	<b>1 - KITCHEN: INSTALL EXTRA ROUGH-IN LINE FOR FRIDGE ICE MAKER WITH SHUT-OFF</b>
Line 8210	Note:
24May22 / 31May22	

Inv.408 6	<b>1 - BASEMENT: INSTALL COMPLETE 3 PIECE BATHROOM - EXTRA 3-PIECE IN BASEMENT</b>
Line 8202	Note:
24May22 / 31May22	

Inv.408 8	<b>1 - BACKFLOW PREVENTER VALVE</b>
Line 8204	Note:
24May22 / 31May22	

Inv.408 10	<b>1 - BASEMENT: INSTALL EXTRA LAUNDRY ROUGH-IN IN BASEMENT, IN UNFINISHED AREA. INCLUDES PLUMBING, ELECTRICAL AND VENTING. SEE SKETCH</b>
Line 8206	Note:
24May22 / 31May22	

## VACCUM/BELL

Inv.408 4	<b>1 - FAMILY ROOM: INSTALL CONDUIT - 1 1/4" ORANGE FLEX CONDUIT APPROX. 35FT FOR FIREPLACE, FOR TV</b>
Line 8200	Note:
24May22 / 31May22	

## WINDOWS

Inv.408 2	<b>1 - BASEMENT: INSTALL BASEMENT WINDOW - EGRESS IN LIEU OF STANDARD WINDOW - 56" X 30"H</b>
Line 8198	Note:
24May22 / 31May22	

Inv.408 3	<b>1 - BASEMENT: ENLARGE BASEMENT WINDOW - TO 36 X 30</b>
Line 8199	Note:
24May22 / 31May22	

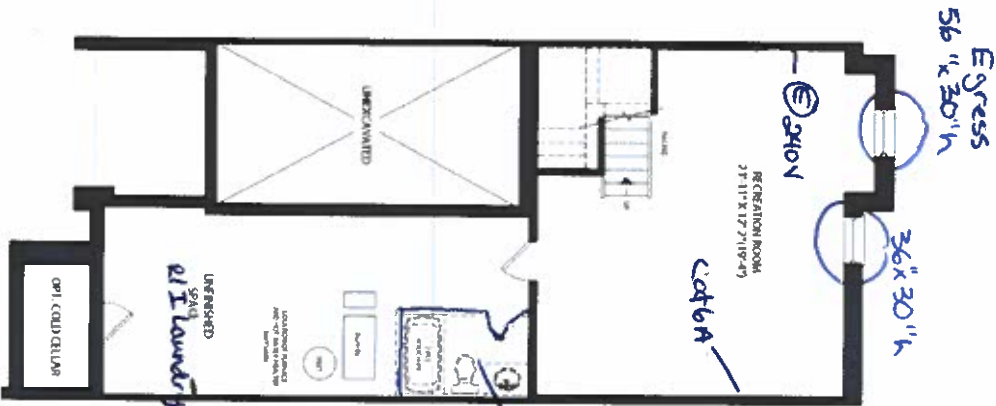
TH-3  
EDGEMERE  
ELEV B 2,903 SQ. FT.

SCHEDULE "H"

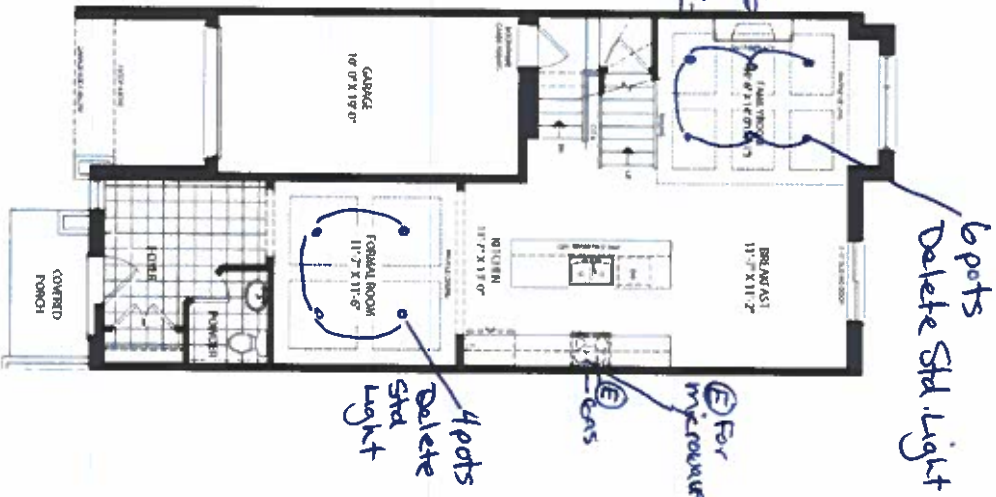
Not 221-2  
May 24, 22



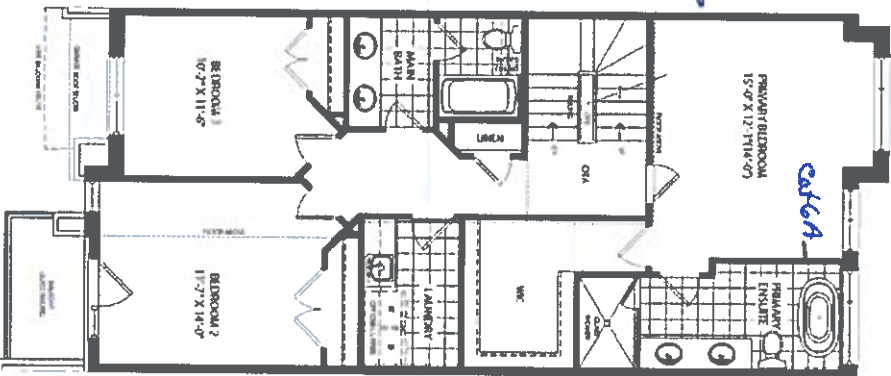
FINISHED BASEMENT ELEV B



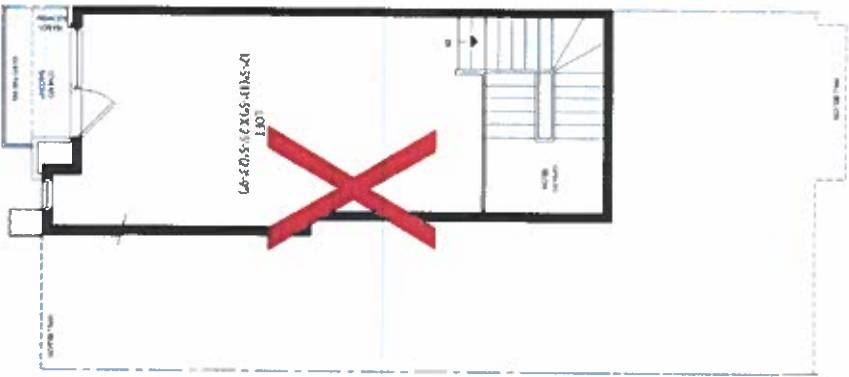
GROUND FLOOR ELEV B



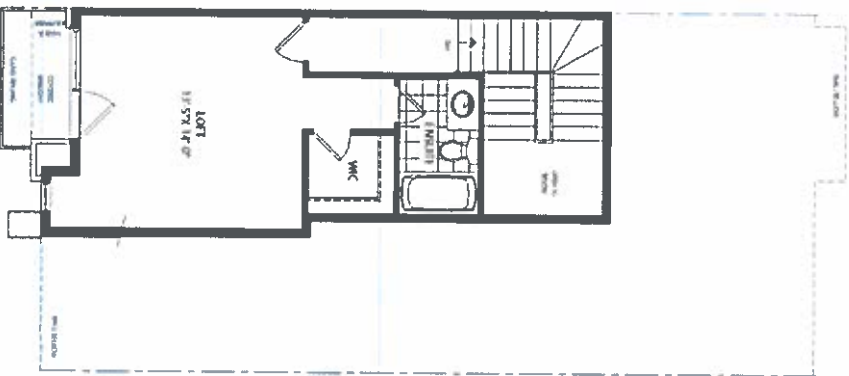
SECOND FLOOR ELEV B



LOFT PLAN ELEV B



OPT LOFT PLAN ELEV B



JOSHUA CREEK

MONTAGE

All dimensions are approximate and subject to normal construction variances. Dimensions may exceed the usable living area. Stairs, space, cold cellar, hot tubs and laundry and condenser are subject to change without notice. Drawings may show optional features which may not be included in the base price. Plans may be reversed. Builders and licensees are not responsible for the details. All drawings are at the discretion of the architect. All drawings are at the discretion of the architect.

VALE  
HOMES