

# CONSTRUCTION SUMMARY

**Joshua Creek - 224-2      ARBOURVIEW (TH-02) A**

Registere Plan Number:    Municipal Address:

## CONSTRUCTION

Inv.419 3	<b>1 - BASEMENT: COLD CELLAR</b>
Line 8500	Note:
30Jun22 / 30Jun22	

## ELECTRICAL

Inv.419 4	<b>4 - KITCHEN: INSTALL FOUR (4) POT LIGHTS - 4" LED NON-INSULATED CEILINGS, LOCATIONS MAY VARY SLIGHTLY DUE TO JOIST LOCATIONS</b>
Line 8501	Note:
30Jun22 / 30Jun22	

Inv.419 5	<b>6 - FAMILY ROOM: INSTALL SIX (6) POT LIGHTS - 4" LED NON-INSULATED CEILINGS. DELETE STANDARD LIGHT. LOCATIONS MAY VARY SLIGHTLY DUE TO JOIST LOCATIONS</b>
Line 8502	Note:
30Jun22 / 30Jun22	

Inv.419 6	<b>4 - FORMAL ROOM: INSTALL FOUR (4) POT LIGHT - 4" LED NON-INSULATED CEILINGS. DELETE STAMDARD LIGHT. LOCATIONS MAY VARY SLIGHTLY DUE TO JOIST LOCATIONS</b>
Line 8503	Note:
30Jun22 / 30Jun22	

Inv.419 7	<b>1 - KITCHEN: CEILING FIXTURE - RELOCATE STANDARD CEILING FIXTURE. TO GO ABOVE KITCHEN ISLAND. LOCATIONS MAY VARY SLIGHTLY DUE TO JOIST LOCATIONS</b>
Line 8504	Note:
30Jun22 / 30Jun22	

Inv.419 8	<b>1 - ROUGH-IN FOR AIR CONDITIONER. INCLUDES ELECTRICAL AND BREAKER</b>
Line 8505	Note:
30Jun22 / 30Jun22	

Inv.419 9	<b>1 - FAMILY ROOM: INSTALL ELECTRICAL - ROUGH-IN FOR 15 AMP ABOVE FIREPLACE FOR FUTURE TV.</b>
Line 8506	Note:
30Jun22 / 30Jun22	

## HVAC

Inv.419 1	<b>1 - CAT 6A LOCATION SKETCH. LOCATIONS MAY VARY SLIGHTLY DUE TO JOIST LOCATIONS</b>
Line 8498	Note:
30Jun22 / 30Jun22	

## MISCELLANEOUS

Inv.419 12	<b>1 - Purchaser has attended a Structural appointment at the Decor Centre &amp; has DECLINED any additional upgrades and accepts and acknowledges that there will be no further structural changes/additions/deletions to be made upon signing</b>
Line 8509	Note:
30Jun22 / 30Jun22	

## PLUMBING

Inv.419 11	<b>1 - EXTRA ROUGH-IN LINE FOR FRIDGE ICE MAKER WITH SHUT-OFF</b>
Line 8508	Note:
30Jun22 / 30Jun22	

## VACCUM/BELL

## Joshua Creek - 224-2      ARBOURVIEW (TH-02) A

Registere Plan Number:      Municipal Address:

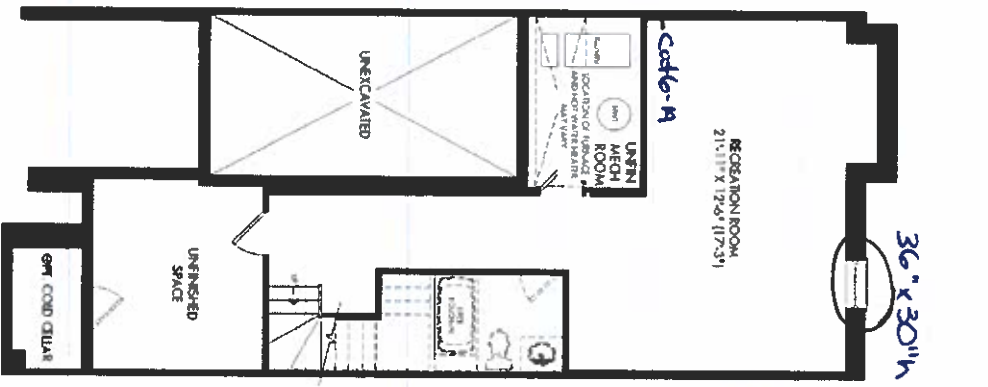
Inv.419 10 Line 8507 30Jun22 / 30Jun22	1 - FAMILY ROOM: INSTALL 1 1/4" ORANGE FLEX CONDUIT ABOVE FIREPLACE FOR FUTURE TV Note:
---	--

## WINDOWS

Inv.419 2 Line 8499 30Jun22 / 30Jun22	1 - BASEMENT: BASEMENT WINDOW - ENLARGE STANDARD WINDOW TO- 36 X 30 Note:
--	--

**TH-2**  
**ARBOURVIEW**  
 ELEV A 2903 SQ. FT.

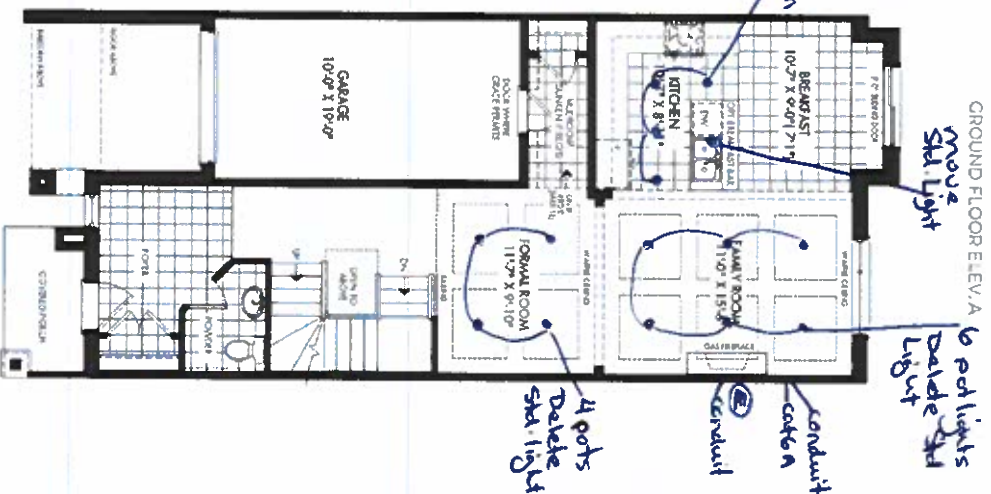
FINISHED  
 BASEMENT ELEV. A



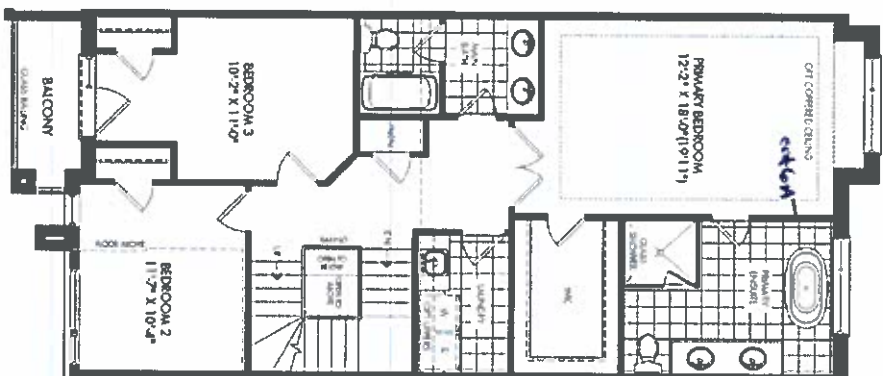
PARTIAL OPTIONAL KITCHEN



GROUND FLOOR ELEV. A



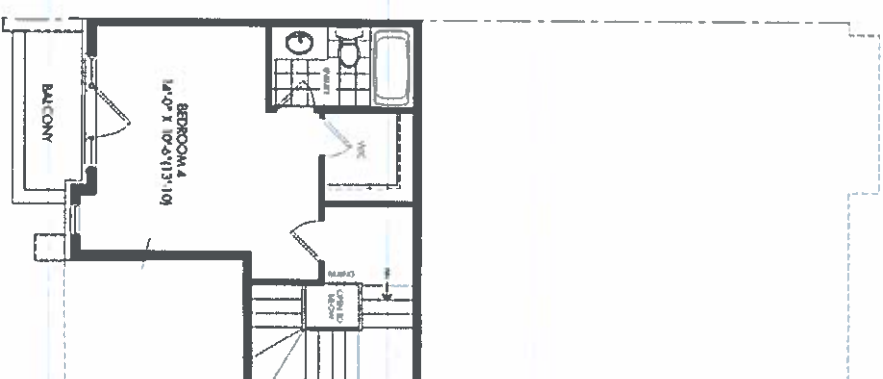
SECOND FLOOR ELEV. A



LOFT PLAN ELEV. A



OPT. LOFT PLAN ELEV. A



*Lot 224-2*  
*June 30, 22*

**SCHEDULE "H"**

**JOSHUA CREEK**

**MONTAGE**

All dimensions are and remain and subject to normal construction variances. Dimensions may reflect the usable floor area. Some specifications, floor plans and terms and conditions are subject to change without notice. Framing may show openings for utility work only and be included in the base price. Plans may be revised. Battery and flood warnings may apply. Contact a sales advisor for further details. All renderings are artist's concepts. E & O.E. All rights reserved. ©Valery Homes.

**VALERY**  
 HOMES