

CONSTRUCTION SUMMARY

Joshua Creek - 89**CASTLEFIELD (42-04) A**

Registere Plan Number: Municipal Address: Closing: 7-Nov-23

BONUS

Inv.531 41 Line 10850	1 - BONUS PACKAGE: \$5,000.00 WORTH OF UPGRADES FROM VALERY HOMES DÉCOR CENTRE IS BEING APPLIED TOWARD THE STRUCTURAL APPOINTMENT Note:
10Mar23 / 11May23	

CEILING

Inv.531 35 Line 10844	1 - SECOND FLOOR: SMOOTH CEILING THROUGHOUT SECOND FLOOR Note:
10Mar23 / 11May23	

CONSTRUCTION

Inv.531 38 Line 10849	1 - KITCHEN: EXTEND NIB WALL TO ACCOMODATE A FUTURE DEEP PANTRY. Note:
10Mar23 / 11May23	

Inv.531 10 Line 10969	1 - KITCHEN: MOVE DISHWASHER OUT OF THE ISLAND AND ONTO THE STOVE WALL. Note:
10Mar23 / 11May23	

Inv.531 40 Line 10978	1 - EXTERIOR: INSTALL SIDE DOOR ENTRANCE INTO MUDROOM, AS PER PLAN, WHERE GRADE PERMITS. Note:
10Mar23 / 11May23	

Inv.531 9 Line 10818	1 - KITCHEN: MOVE SINK OUT OF THE ISLAND AND ONTO THE BACK WALL. SINK WILL BE UNDER KITCHEN WINDOW. *NOTE THAT PURCHASER WILL NEED TO BUY CABINETRY TO ACCOMODATE THIS CHANGE AT COLOUR APPNT. THAT ISLAND MUST BE REDUCED IN LENGTH Note:
10Mar23 / 11May23	

ELECTRICAL

Inv.531 11 Line 10819	2 - APPLIANCE - RELOCATE STANDARD APPLIANCE KITCHEN: MOVE SINK AND DISHWASHER OUT OF THE ISLAND AND ONTO THE BACK/STOVE WALL. *NOTE THAT PURCHASER WILL NEED TO BUY CABINETRY TO ACCOMODATE THIS CHANGE AT COLOUR APPNT. Note: PLEASE SEE REVISED KITCHEN PLAN FOR DETAILS
10Mar23 / 11May23	

Inv.531 6 Line 10815	1 - KITCHEN: INSTALL ELECTRICAL - ROUGH-IN FOR 50 AMP, 60" 4 WIRE FOR WALL OVEN Note:
10Mar23 / 11May23	

Inv.531 3 Line 10812	1 - KITCHEN: INSTALL RECEPTACLES - ADDITIONAL 15 AMP 120 VOLT RECEPTACLE (NON-DEDICATED) FOR GAS STOVE Note:
10Mar23 / 11May23	

Inv.531 4 Line 10813	1 - KITCHEN: INSTALL RECEPTACLES - DEDICATED 15 AMP 120 VOLT RECEPTACLE FOR FREEZER COLUMN Note:
10Mar23 / 11May23	

CONSTRUCTION SUMMARY

Joshua Creek - 89 CASTLEFIELD (42-04) A

Registere Plan Number: Municipal Address: Closing: 7-Nov-23

Inv.531 39	1 - ELECTRICAL - ROUGH-IN FOR AC UNIT. INCLUDES BREAKER & LOW VOLTAGE WIRE
Line 10887	Note:
10Mar23 / 11May23	
Inv.531 13	1 - KITCHEN: CEILING FIXTURE - RELOCATE STANDARD CEILING FIXTURE, TO GO ABOVE ISLAND
*NOTE ISLAND HAS BEEN REDUCED IN SIZE. SEE SKETCH	
Line 10822	Note: Location may vary slightly due to joist location
10Mar23 / 11May23	
Inv.531 14	1 - KITCHEN: CEILING LIGHT ROUGH IN - FOR 1 CEILING LIGHT, ON EXISTING SWITCH (DOES NOT INCLUDE FIXTURE). TO GO ABOVE ISLAND
*NOTE ISLAND HAS BEEN REDUCED IN SIZE. SEE SKETCH	
Line 10823	Note: Location may vary slightly due to joist location
10Mar23 / 11May23	
Inv.531 15	5 - KITCHEN: INSTALL FIVE (5) POT LIGHTS - 4" LED NON-INSULATED CEILINGS, ON SEPERATE SWITCH
Line 10824	Note: Location may vary slightly due to joist location
10Mar23 / 11May23	
Inv.531 16	6 - BREAKFAST AREA: INSTALL SIX (6) POT LIGHTS - 4" LED NON-INSULATED CEILINGS, ON SEPERATE SWITCH.
KEEP STANDARD LIGHT	
Line 10825	Note: Location may vary slightly due to joist location
10Mar23 / 11May23	
Inv.531 17	6 - FAMILY ROOM: INSTALL SIX (6) POT LIGHTS - 4" LED NON-INSULATED CEILINGS, ON SEPERATE SWITCH.
KEEP STANDARD LIGHT	
Line 10826	Note: Location may vary slightly due to joist location
10Mar23 / 11May23	
Inv.531 20	1 - FAMILY ROOM: INSTALL ELECTRICAL - DEDICATED 15 AMP 120 V FOR ELECTRIC FIREPLACE
Line 10828	Note:
10Mar23 / 11May23	
Inv.531 21	1 - FAMILY ROOM: ELECTRICAL - DEDICATED 15 AMP 120 V FOR FUTURE TV ABOVE FIREPLACE
Line 10829	Note:
10Mar23 / 11May23	
Inv.531 33	1 - UPPER HALL- OPEN TO BELOW AREA: CEILING LIGHT ROUGH IN - FOR 1 CEILING LIGHT - ON SEPARATE SWITCH (DOES NOT INCLUDE FIXTURE)
Line 10842	Note: Location may vary slightly due to joist location
10Mar23 / 11May23	
Inv.531 34	1 - UPPER HALL: REINFORCE CEILING LIGHT ROUGH IN - FOR FUTURE CHANDELIER. MAX WEIGHT OF 50 POUNDS
Line 10843	Note: Location may vary slightly due to joist location
10Mar23 / 11May23	

FIREPLACE

CONSTRUCTION SUMMARY

Joshua Creek - 89 CASTLEFIELD (42-04) A

Registere Plan Number: Municipal Address: Closing: 7-Nov-23

Inv.531 18	1 - FAMILY ROOM: RELOCATE STANDARD LOCATION OF GAS FIREPLACE. SEE SKETCH (PURCHASER IS BUYING AN ELECTRIC FIREPLACE)
Line 10831	Note:
10Mar23 / 11May23	

FIREPLACE

Inv.531 19	1 - FAMILY ROOM: INSTALL FIREPLACE - ALLURAVISION 50 INCH DEEP DEPTH ELECTRIC FIREPLACE - GLASS FRONT - BLACK - INCLUDES SOUTH BEACH LOG SET - NEFL50CHD.
Line 10827	Note:
10Mar23 / 11May23	

HVAC

Inv.531 2	1 - KITCHEN: INSTALL GAS PIPING AND OTHER - GAS LINE R/I FOR MAIN FLOOR - STOVE
Line 10811	Note:
10Mar23 / 11May23	
Inv.531 7	1 - KITCHEN: INSTALL GAS PIPING AND OTHER - UPGRADE STOVE VENT FROM STANDARD 6 INCH TO 10 INCH
Line 10816	Note:
10Mar23 / 11May23	

MISCELLANEOUS

Inv.531 8	1 - KITCHEN UPGRADE DEPOSITS DEPOSIT FOR REDESIGNED KITCHEN. AMOUNT TO BE DEDUCTED FROM KITCHEN DESIGN AT COLOUR APPOINTMENT. MUST BE USED TOWARDS KITCHEN CABINET UPGRADES. FULL AMOUNT IS NON-REFUNDABLE IF PURCHASER DOES NOT UPGRADE THE KITCHEN.
Line 10817	Note:
10Mar23 / 11May23	
Inv.531 42	1 - Purchaser has attended a Structural appointment at the Decor Centre & has DECLINED any additional upgrades and accepts and acknowledges that there will be no further structural changes/additions/deletions to be made upon signing.
Line 10851	Note: Purchasers are aware & accept that ANY changes made to upgrades after signing this Purchasers Extra Form are subject to an administration fee
10Mar23 / 11May23	
Purchaser accepts & acknowledges that all upgrades are to be approved by construction before the invoice is accepted.	

PLUMBING

Inv.531 12	1 - KITCHEN: MOVE SINK AND DISHWASHER OUT OF THE ISLAND AND ONTO THE BACK WALLS. SINK WILL BE UNDER KITCHEN WINDOW. *NOTE THAT PURCHASER WILL NEED TO BUY CABINETRY TO ACCOMODATE THIS CHANGE AT COLOUR APPNT. THAT ISLAND MUST BE REDUCED IN LENGTH
Line 10820	Note: PLEASE SEE ATTACHED KITCHEN PLAN FOR DETAILS
10Mar23 / 11May23	
Inv.531 5	1 - KITCHEN: INSTALL EXTRA ROUGH-IN LINE FOR FRIDGE ICE MAKER WITH SHUT-OFF FOR FREEZER
Line 10814	Note:
10Mar23 / 11May23	
Inv.531 23	1 - EXTRA HOT FAUCET IN GARAGE, INCL. MIXING VALVE
Line 10832	Note:
10Mar23 / 11May23	

CONSTRUCTION SUMMARY

Joshua Creek - 89 CASTLEFIELD (42-04) A

Registere Plan Number: Municipal Address: Closing: **7-Nov-23**

Inv.531 25	1 - KITCHEN: INSTALL SIP BEVERAGE FAUCET MOEN TRANSITIONAL SINGLE HANDLE BEVERAGE FAUCET WITH FILTER S5535/ S5500
Line 10833	Note:
10Mar23 / 11May23	
Inv.531 24	1 - KITCHEN: ADDITIONAL PLUMBING-WATER CONNECTION WHEN ADDING SIP FAUCET
Line 10834	Note:
10Mar23 / 11May23	
Inv.531 26	3 - PRIMARY ENSUITE - ENSUITE 2 - SHARED BATH: ADDITIONAL PLUMBING-WATER CONNECTION WHEN ADDING HAND-HELD SHOWER (THREE CONNECTIONS)
Line 10835	Note:
10Mar23 / 11May23	
Inv.531 27	1 - INSTALL PLUMBING FOR RAIN SHOWERHEAD FROM CEILING, MUST PURCHASE SHOWERHEAD. IN LIEU OF STANDARD SHOWERHEAD ON WALL
Line 10836	Note:
10Mar23 / 11May23	
Inv.531 28	1 - PRIMARY ENSUITE: INSTALL RAIN SHOWERHEAD MOEN 12" RAINSHOWER WITH IMMERSION S1004
Line 10837	Note:
10Mar23 / 11May23	
Inv.531 29	1 - PRIMARY ENSUITE: INSTALL 6" STRAIGHT SHOWER ARM FOR SHOWERHEAD MOEN 6" SHOWER ARM 116651
Line 10838	Note:
10Mar23 / 11May23	
Inv.531 30	1 - PRIMARY ENSUITE: INSTALL HAND-HELD SHOWER MOEN EVA POSI-TEMP SHOWER ONLY WITH 3 FUNCTION TRANSFER VALVE/ TRIM AND SLIDE BAR WITH HAND SHOWER T2232EP / U361C1 / UT2011 / 62320 / 3669EP / A725
Line 10839	Note:
10Mar23 / 11May23	
Inv.531 31	2 - ENSUITE 2 - SHARED BATH: INSTALL HAND-HELD SHOWERS MOEN EVA - POSI-TEMP TUB/SHOWER FAUCET WITH 3 FUNCTION TRANSFER VALVE/ TRIM AND SLIDE BAR WITH HAND SHOWER T2233EP / U361C1 / UT2011 / 62320 / 3669EP / A725
Line 10840	Note:
10Mar23 / 11May23	
Inv.531 32	1 - PRIMARY ENSUITE: INSTALL SHOWER NICHE
Line 10841	Note:
10Mar23 / 11May23	

VACCUM/BELL

CONSTRUCTION SUMMARY

Joshua Creek - 89 CASTLEFIELD (42-04) A

Registere Plan Number: Municipal Address: Closing: **7-Nov-23**

Inv.531	1 - CAT 6A LOCATION SKETCH. LOCATIONS MAY VARY SLIGHTLY DUE TO JOIST
1	LOCATIONS (STD)
Line 10810	Note:
10Mar23 / 11May23	

Inv.531	1 - FAMILY ROOM: INSTALL 1 1/4" ORANGE FLEX CONDUIT FOR TV ABOVE FIREPLACE
22	
Line 10830	Note: LOCATIONS MAY VARY SLIGHTLY DUE TO JOIST LOCATIONS
10Mar23 / 11May23	

WINDOWS

Inv.531	4 - BASEMENT: BASEMENT WINDOW - ENLARGE FOUR (4) STANDARD WINDOW TO- 36 X 30
36	
	INCLUDES NEW WINDOW ADDED
Line 10845	Note: MAY REQUIRE A WINDOW WELL
10Mar23 / 11May23	

Inv.531	1 - BASEMENT: BASEMENT WINDOW - ADDITIONAL STANDARD WINDOW - 36 X 16. SEE
37	SKETCH
Line 10848	Note: MAY REQUIRE A WINDOW WELL
10Mar23 / 11May23	



OPTIONAL SECOND FLOOR ELEV A
5 BEDROOM



SECOND FLOOR ELEV A



PARTIAL OPTIONAL SECOND FLOOR ELEV B
5 BEDROOM



PARTIAL OPTIONAL SECOND FLOOR ELEV C
5 BEDROOM



PARTIAL SECOND FLOOR ELEV B



PARTIAL SECOND FLOOR ELEV C

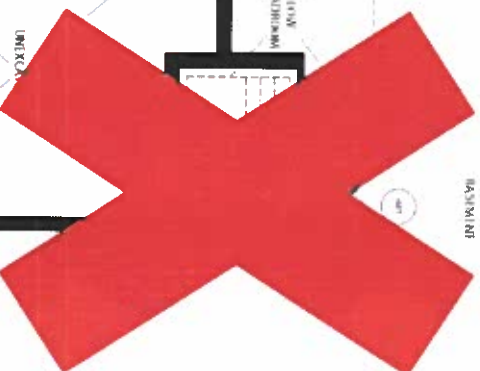
JOSHUA CREEK

MONTAGE

All dimensions are approximate and should be used for general reference only. Final dimensions may vary due to construction and site conditions. All dimensions are subject to change without notice. All dimensions are subject to change without notice. All dimensions are subject to change without notice.

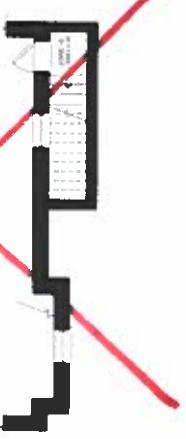
Rough-in light on
Separate switch.
Re-inforce for
future chandelier
(max. 50 lbs)

42-4



UNFINISHED BASEMENT ELEV. A, B & C

~~PARIAL FINISHED BASEMENT PLAN ELEV. A, B & C
WITH OPT. EXTERIOR STAIR~~



89 107

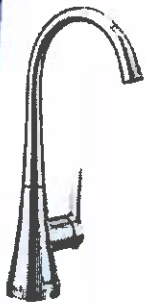
21, 23

of different soils and different depths of the soil profile. The authors found that the use of a 400 g test space, starting from the 10th cm of the soil profile and considering a subject to evaluate with all nodes (between 10 and 15 cm) from the soil surface of the soil profile.

VALERY
HOMES

Sip™ Beverage Faucets

Lot 89 ○ ○
April 21, 23



Kitchen

Transitional Single Handle Beverage Faucet with Filter

S5535 / S5500

Chrome	\$886.31
Other	\$1,136.19

Not available in BLS, BG & ORB
Secondary optional handles included
Single hole installation only



Paterson™ Transitional Single Handle Beverage Faucet with Filter

S5540 / S5500

Chrome	\$841.81
Other	\$1,068.81

Not available in NL, BLS, BG & ORB
Single hole installation only

BEVERAGE FAUCETS



Modern Single Handle Beverage Faucet with Filter

S5550 / S5500

Chrome	\$841.81
Other	\$1,068.81
Black Stainless	\$1,136.13

Not available in NL, BG & ORB
Single hole installation only

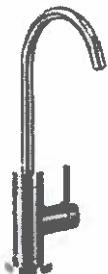


Transitional Single Handle Beverage Faucet with Filter

S5520 / S5500

Chrome	\$841.81
Other	\$1,068.81
Black Stainless	\$1,136.13

Not available in NL
Single hole installation only



Modern Single Handle Beverage Faucet with Filter

S5530 / S5500

Chrome	\$841.81
Other	\$1,068.81
Black Stainless	\$1,136.13

Not available in NL & ORB
Single hole installation only



Traditional Single Handle Beverage Faucet with Filter

S5510 / S5500

Chrome	\$841.81
Other	\$1,068.81

Not available in BLS
Single hole installation only



KURV™ Transitional Single Handle Beverage Faucet with Filter

S5560 / S5500

Chrome	\$835.63
Other	\$1,059.50

Not available in BLS, BG & ORB
Single hole installation only

FINISH OPTIONS



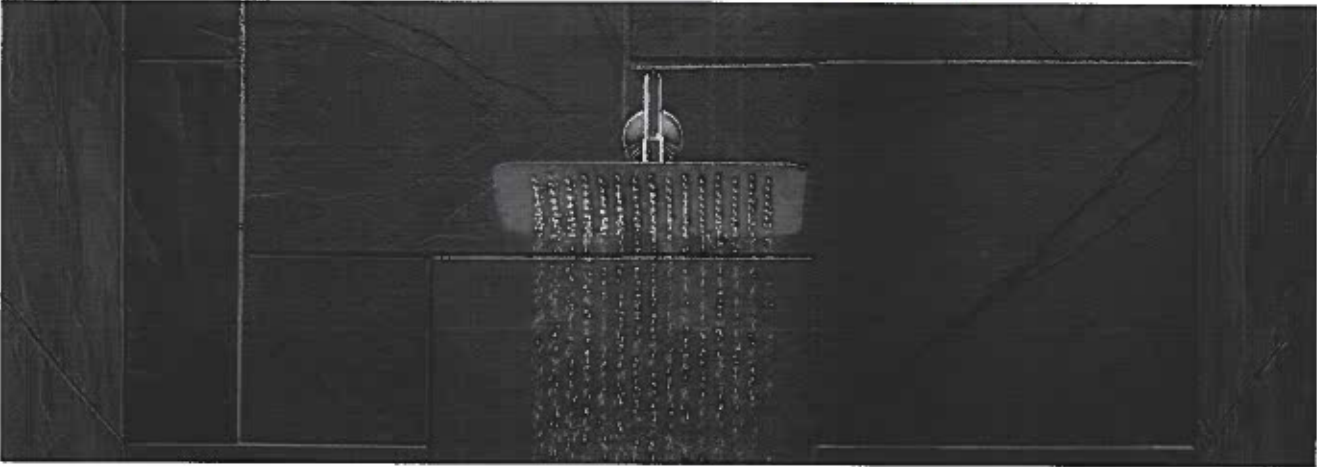
Chrome (C), Spot Resist™ Stainless (SRS), LifeShine® Polished Nickel (NL), Black Stainless (BLS), Brushed Gold (BG), Matte Black (BL), Oil Rubbed Bronze (ORB)

To order, combine the model number with one of these finish letter(s). Spot Resist™ Stainless (SRS), LifeShine® Polished Nickel (NL), Black Stainless (BLS), Brushed Gold (BG), Matte Black (BL) & Oil Rubbed Bronze (ORB)
To order Chrome (C) models, use model number only.

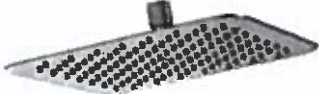
Rainshowers

Lot 89
Apr. 21, 23

SHOWERING



10" Rainshower with Immersion™
S1001
Chrome \$658.75



10" Rainshower with Immersion™
S1003
Chrome \$691.25



12" Rainshower with Immersion™
S1002
Chrome \$699.44



12" Rainshower with Immersion™
S1004
Chrome \$732.00



master
Ensuite

To order Chrome [C] model, use model number only

Showering Arms & Flanges

Lot 89

SHOWERING

exp. 21, 23



16" Overhead Shower Arm

151380

Chrome \$109.13
Other \$187.13



Chrome, LifeShine® Brushed Nickel [BN],
Oil Rubbed Bronze [ORB], Matte Black [BL],
Brushed Gold [BG]



8" Curved Shower Arm

123815

Chrome \$40.88
Oil Rubbed Bronze \$93.19
Other \$90.63



Chrome, LifeShine® Brushed Nickel [BN], LifeShine®
Polished Nickel [NL], Oil Rubbed Bronze [ORB],
Matte Black [BL], Brushed Gold [BG]



12" Straight Shower Arm

226651

Chrome \$73.44
Other \$133.25



Chrome, LifeShine® Brushed Nickel [BN], LifeShine®
Polished Nickel [NL], Oil Rubbed Bronze [ORB],
Wrought Iron [WR], Brushed Gold [BG]



6" Straight Shower Arm

116651

Chrome \$28.63
Other \$47.06



Chrome, LifeShine® Brushed Nickel [BN], LifeShine®
Polished Nickel [NL], Oil Rubbed Bronze [ORB],
Wrought Iron [WR], Brushed Gold [BG]

master
Ensuite



Round Shower Flange

137488

Chrome \$12.88
Other \$33.38
Matte Black /
Polished Nickel \$35.31



Chrome, LifeShine® Brushed Nickel [BN],
LifeShine® Polished Nickel [NL],
Matte Black [BL], Brushed Gold [BG]



Square Shower Flange

147572

Chrome \$26.31
Other \$52.63



Chrome, LifeShine® Brushed Nickel [BN]



Round Shower Flange

AT2199

Chrome \$16.38
Other \$43.63



Chrome, LifeShine® Brushed Nickel [BN], LifeShine®
Polished Nickel [NL], Oil Rubbed Bronze [ORB],
Wrought Iron [WR], Brushed Gold [BG]

To order, combine the model number with one of these finish letter(s): LifeShine® Brushed Nickel [BN], Oil Rubbed Bronze [ORB], LifeShine® Polished Nickel [NL], Wrought Iron [WR], Brushed Gold [BG] & Matte Black [BL]
To order Chrome [C] model, use model number only



POSI-TEMP®

- Shared Bath
- Ensuite 2



Posi-Temp® Tub/Shower Faucet with 3 Function Transfer Valve/Trim and Slide Bar with Hand Shower*

T2233EP / U361CI / UT2011 / 62320 / 3669EP / A725

Chrome \$1,464.69
Other \$2,438.63



Primary
Ensuite

Posi-Temp® Shower Only with 3 Function Transfer Valve/Trim and Slide Bar with Hand Shower*

T2232EP / U361CI / UT2011 / 62320 / 3669EP / A725

Chrome \$1,407.25
Other \$2,343.13

EVA FINISH OPTIONS



Chrome, LifeShine® Brushed Nickel (BN), Oil Rubbed Bronze (ORB)

To order, combine the model number with one of these finish letter(s): LifeShine® Brushed Nickel (BN) & Oil Rubbed Bronze (ORB). To order Chrome (CI) model, use model number only.

* Refer to the Shower Design Guide for Installation Instructions