

CONSTRUCTION SUMMARY

Joshua Creek - 86 LIBERTY (42-03) B

Registere Plan Number: Municipal Address: Closing: 3-Nov-23

BONUS

Inv.524	1 - BONUS PACKAGE: \$5,000.00 WORTH OF UPGRADES FROM VALERY HOMES DÉCOR
42	CENTRE IS BEING APPLIED TOWARD THE STRUCTURAL APPOINTMENT
Line 10707	Note:
21Feb23 / 29May23	

CEILING

Inv.524	1 - SECOND FLOOR: SMOOTH CEILING THROUGHOUT SECOND FLOOR
2	
Line 10551	Note:
21Feb23 / 29May23	

Inv.524	1 - BASEMENT: SMOOTH CEILING THROUGHOUT BASEMENT
3	
Line 10552	Note:
21Feb23 / 29May23	

CONSTRUCTION

Inv.524	1 - PRIMARY ENSUITE: MOVE ENSUITE DOOR AS CLOSE TO BACK WALL AS POSSIBLE. SEE
26	SKETCH
Line 10690	Note:
21Feb23 / 29May23	

Inv.524	1 - STAIRCASE WALL-EXTERIOR: INSTALL THREE (3) NICHEs ALONG WALL OF
39	STAIRCASE- SEE PICTURE ATTACHED. INCLUDES FOAM INSULATION AND ONE 2",
	SQUARE POT LIGHT IN EACH (TOTAL OF 3 POTS)
	LIGHTS: 2" SQUARE BAFFLE DOWNLIGHT- BLACK. SEE SPEC SHEET ATTACHED
Line 10703	Note:
21Feb23 / 29May23	

CONSTRUCTION

Inv.524	1 - MAIN FLOOR: INCREASE CEILING HEIGHT BY 2 FEET, 10 ft TO 12 ft)
4	
Line 10553	Note:
21Feb23 / 29May23	

ELECTRICAL

Inv.524	1 - KITCHEN: INSTALL ELECTRICAL - ROUGH-IN FOR 40 AMP 220 V BUILT-IN WALL OVEN,
10	
Line 10560	Note:
21Feb23 / 29May23	

Inv.524	1 - KITCHEN: INSTALL APPLIANCE - RELOCATE STANDARD APPLIANCE. MOVE STOVE
12	LOCATION TOWARD THE SINK WALL BY 2 FEET.
Line 10562	Note:
21Feb23 / 29May23	

Inv.524	1 - FAMILY ROOM: ELECTRICAL - DEDICATED 15 AMP 120 V FOR FUTURE TV ABOVE
13	FIREPLACE
	NO CONDUIT NEEDED
Line 10563	Note:
21Feb23 / 29May23	

Inv.524	1 - PRIMARY ENSUITE: MASTER ENSUITE JET TUB -RECEPTACLES - DEDICATED 15 AMP 120
15	VOLT GFCI RECEPTACLE (INTERIOR)
Line 10679	Note:
21Feb23 / 29May23	

CONSTRUCTION SUMMARY

Joshua Creek - 86 LIBERTY (42-03) B

Registere Plan Number: Municipal Address: Closing: **3-Nov-23**

Inv.524 27	1 - FAMILY ROOM: RECEPTACLES - DEDICATED 15 AMP 120 VOLT RECEPTACLE (COMPLETE FLOOR PLUG)
	SEE FLOOR PLAN FOR LOCATION
Line 10691	Note: Location may vary slightly due to joist locations
21Feb23 / 29May23	
Inv.524 28	3 - FAMILY ROOM - PRIMARY BEDROOM - DINING ROOM: REINFORCE CEILING FIXTURE FOR FUTURE CHANDELIER- MAX 50 POUNDS
Line 10692	Note:
21Feb23 / 29May23	
Inv.524 20	1 - PRIMARY ENSUITE: INSTALL RECEPTACLES - DEDICATED 15 AMP 120 VOLT GFCI RECEPTACLE (INTERIOR) FOR THERMOSTATIC SHOWER'S ROUGH-IN VALVE
Line 10684	Note:
21Feb23 / 29May23	
Inv.524 31	1 - ELECTRICAL - ROUGH-IN FOR AC UNIT. INCLUDES BREAKER & LOW VOLTAGE WIRE
Line 10695	Note:
21Feb23 / 29May23	
Inv.524 35	1 - KITCHEN: INSTALL CABINET LIGHTING - UNDERMOUNT T-5 LED VALANCE LIGHT. LIGHT ONLY
Line 10699	Note: Valance must be purchased at the colour appointment to cover lights
21Feb23 / 29May23	
Inv.524 36	1 - KITCHEN: INSTALL CEILING FIXTURE - RELOCATE STANDARD CEILING FIXTURE
Line 10700	Note: Location may vary slightly due to joist location
21Feb23 / 29May23	
Inv.524 37	1 - KITCHEN: INSTALL CEILING LIGHT ROUGH IN - FOR 1 CEILING LIGHT, ON EXISTING SWITCH (DOES NOT INCLUDE FIXTURE). TO GO ABOVE ISLAND, ON SAME SWITCH AS STANDARD LIGHT
Line 10701	Note: Location may vary slightly due to joist location
21Feb23 / 29May23	
Inv.524 38	1 - PRIMARY ENSUITE: INSTALL CEILING LIGHT ROUGH IN - FOR 1 CEILING LIGHT, COMPLETE WITH 1 SWITCH, TO GO ABOVE TUB
Line 10702	Note: Location may vary slightly due to joist location
21Feb23 / 29May23	
Inv.524 40	1 - STAIRCASE WALL-EXTERIOR: INSTALL THREE (3) NICHES ALONG WALL OF STAIRCASE- SEE PICTURE ATTACHED. INCLUDES FOAM INSULATION AND ONE POT LIGHT IN EACH
Line 10704	Note:
21Feb23 / 29May23	
Inv.524 41	15 - STAIRCASE: MAIN TO BASEMENT (6) - MAIN TO SECOND (9) INSTALL ONE POT LIGHT AT EVERY SECOND STEP, STARTING ON SECOND STEP
	LIGHT: OSL1020-30K FACEPLATE: OSL-EYE1-BK EYELID
Line 10705	Note: *SEE POT LIGHT SPECS ATTACHED
21Feb23 / 29May23	
	*NOTE: THE MAIN FLOOR CEILINGS ARE 12' HIGH. APPROX. 15 POT LIGHTS NEEDED. ONCE STAIRS ARE INSTALLED, WE WILL ADJUST AMOUNT IF NEEDED
Inv.524 33	1 - FAMILY ROOM: INSTALL ELECTRICAL - DEDICATED 15 AMP 120 V FOR ELECTRIC FIREPLACE
Line 10697	Note:
21Feb23 / 29May23	

FIREPLACE

CONSTRUCTION SUMMARY

Joshua Creek - 86 LIBERTY (42-03) B

Registere Plan Number: Municipal Address: Closing: **3-Nov-23**

Inv.524 32 Line 10696	1 - FAMILY ROOM: INSTALL FIREPLACE - ALLURAVISION 50 INCH DEEP DEPTH ELECTRIC FIREPLACE - GLASS FRONT - BLACK - INCLUDES SOUTH BEACH LOG SET - NEFL50CHD. Note: 21Feb23 / 29May23
-----------------------------	---

INTERIOR DOOR & TRIM

Inv.524 25 Line 10689	5 - PRIMARY BEDROOM, BED 2, 3 AND 4: INSTALL PRIVACY LOCKS ON ALL BEDROOM DOORS, 5 IN TOTAL (2 IN PRIMARY) Note: 21Feb23 / 29May23
-----------------------------	--

Inv.524 5 Line 10554	2 - DEN: INSTALL 1 PANEL FRENCH DOOR (X2), WHITE ACID ETCHED GLASS 96" H Note: 21Feb23 / 29May23
----------------------------	--

Inv.524 6 Line 10555	23 - SECOND FLOOR & BASEMENT: INSTALL LINCOLN PARK DOOR, 1 PANEL, HERITAGE 84" H. TOTAL OF 23 DOORS Note: 21Feb23 / 29May23
----------------------------	---

Inv.524 7 Line 10556	4 - MAIN FLOOR: INSTALL LINCOLN PARK DOOR, 1 PANEL, HERITAGE 96" H. TOTAL OF FOUR (4) DOORS (DEN TO HAVE DIFFERENT DOORS) Note: 21Feb23 / 29May23
------------------------------------	--

Inv.524 8 Line 10558	0 - FRONT DOOR: INTERIOR DOOR HARDWARE-1948 IN MATTE BLACK (X4) FOR THE DOUBLE FRONT DOORS ONLY EXTERIOR FRONT DOORS WILL HAVE THE STANDARD GRIP SET. ONLY THE INTERIOR HARDWARE, INCLUDING THE INSIDE OF THE EXTERIOR DOORS ARE UPGRADED TO 1946 Note: 21Feb23 / 29May23
------------------------------------	--

Inv.524 9 Line 10559	1 - INTERIOR DOOR HARDWARE-SINGLES, 1948 IN POLISHED NICKEL. DOESN'T INCL. EXTERIOR DOOR, OR GRIP SET. ***INTERIOR FRONT DOOR HANDLES, TO BE IN BLACK, NOT POLISHED NICKEL LIKE THE REST OF THE HOUSE*** Note: 21Feb23 / 29May23
------------------------------------	---

MISCELLANEOUS

Inv.524 43 Line 10708	1 - Purchaser has attended a Structural appointment at the Decor Centre & has DECLINED any additional upgrades and accepts and acknowledges that there will be no further structural changes/additions/deletions to be made upon signing Note: Purchasers are aware & accept that ANY changes made to upgrades after signing this Purchasers Extra Form are subject to an administration fee 21Feb23 / 29May23 Purchaser accepts & acknowledges that all upgrades are to be approved by construction before the invoice is accepted
---------------------------------	--

PLUMBING

Inv.524 16 Line 10680	1 - PRIMARY ENSUITE: INSTALL TWO HANDLE ROMAN TUB FAUCET WITH HANDSHOWER MOEN ARRIS TS93004 / 9796 CHROME Note: 21Feb23 / 29May23
-------------------------------------	---

CONSTRUCTION SUMMARY

Joshua Creek - 86 LIBERTY (42-03) B

Registere Plan Number: Municipal Address: Closing: **3-Nov-23**

Inv.524 17 Line 10681	2 - PRIMARY ENSUITE & ENSUITE 4: ADDITIONAL PLUMBING-WATER CONNECTION WHEN ADDING HAND-HELD SHOWER Note: 21Feb23 / 29May23
Inv.524 18 Line 10682	1 - ENSUITE #4: INSTALL VERTICAL SPA EXACT TEMP 3/4" THERMOSTATIC VERTICAL SPA WITH 4 BODY SPRAYS TS33002/ TS33003 (x3)/ S110/ S112EP/ TS1322 (x4)/ 3887EP/ A725/ S3371/ S3600 (x3)/ S1300 (x4) Note: 21Feb23 / 29May23
Inv.524 19 Line 10683	1 - PRIMARY ENSUITE: INSTALL VERTICAL SPA- W/MOEN SMART SHOWER 4-OUTLET SHOWER VALVE S3104 THERMOSTATIC VERTICAL SPA WITH 4 BODY SPRAYS S110/ S112EP/ TS1322 (x4)/ 3887EP/ A725/ S1300 (x4) Note: 21Feb23 / 29May23
Inv.524 14 Line 10625	1 - PRIMARY ENSUITE: INSTALL WHIRLPOOL TUB - MASTER ENSUITE JET TUB - INCLUDES BOX BUILT TO ACCOMODATE TUB, WITH STANDARD TILES MONA LISA XP532 Note: 21Feb23 / 29May23
Inv.524 11 Line 10561	1 - KITCHEN: INSTALL EXTRA ROUGH-IN LINE FOR FRIDGE ICE MAKER WITH SHUT-OFF Note: 21Feb23 / 29May23
Inv.524 21 Line 10685	1 - KITCHEN: INSTALL ADDITIONAL PLUMBING-WATER CONNECTION WHEN ADDING POT FILLER Note: 21Feb23 / 29May23
Inv.524 22 Line 10686	1 - KITCHEN: INSTALL MODERN TWO HANDLE POT FILLER FAUCET WITH DUAL SHUT OFFS MOEN S665 CHROME Note: 21Feb23 / 29May23
Inv.524 23 Line 10687	1 - KITCHEN: INSTALL ADDITIONAL PLUMBING-WATER CONNECTION WHEN ADDING SIP FAUCET Note: 21Feb23 / 29May23
Inv.524 24 Line 10688	1 - KITCHEN: INSTALL SIP FAUCET MODERN SINGLE HANDLE BEVERAGE FAUCET WITH FILTER MOEN S5530/ S5500 Note: 21Feb23 / 29May23
Inv.524 29 Line 10693	1 - ENSUITE #4: CONVERT TUB TO SHOWER, INCLUDES 1 SIDE OF FRAMELESS GLASS, CHROME Note: 21Feb23 / 29May23

CONSTRUCTION SUMMARY

Joshua Creek - 86 LIBERTY (42-03) B

Registere Plan Number: Municipal Address: Closing: **3-Nov-23**

Inv.524 30	1 - BASEMENT: INSTALL EXTRA WET BAR, ROUGH-IN ONLY.
Line 10694	*ROUGH-IN CANNOT BE PLACED ON CARPET. TILES OR VINYL MUST BE PURCHASED AT THE TIME OF COLOURS.
	Note:
21Feb23 / 29May23	

VACCUM/BELL

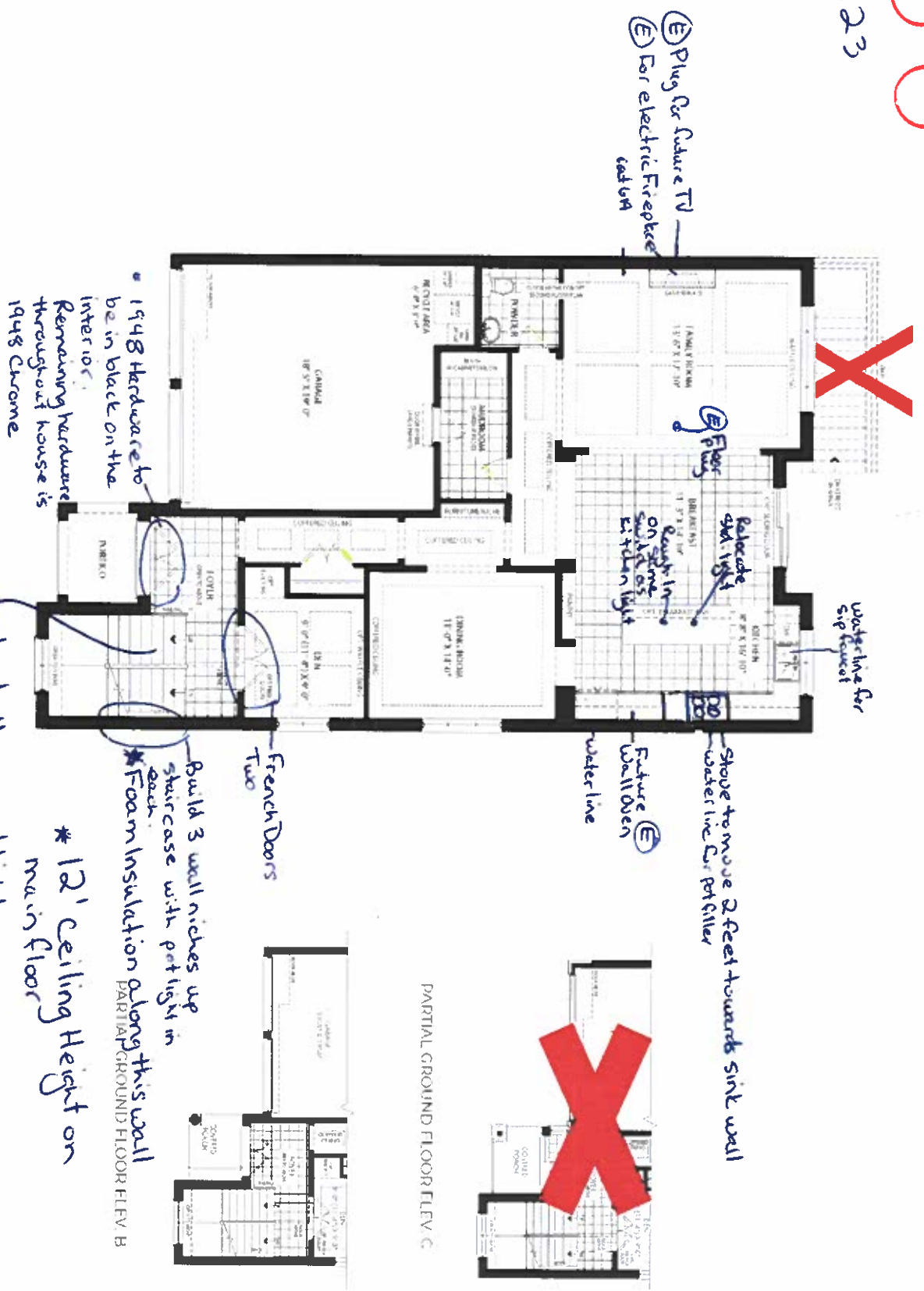
Inv.524 1	1 - CAT 6A LOCATION SKETCH. LOCATIONS MAY VARY SLIGHTLY DUE TO JOIST LOCATIONS (STD)
Line 10550	Note:
21Feb23 / 29May23	

Inv.524 34	1 - BASEMENT: INSTALL SURROUND SOUND - ROUGH-IN SPEAKER WIRES (X5) SUBWOOFER CABLE (X1) 6.5 INCH SPEAKER ROUGH-IN BRACKETS (X5). SEE SKETCH
Line 10698	Note: LOCATIONS MAY VARY SLIGHTLY DUE TO JOIST LOCATIONS
21Feb23 / 29May23	

LIBERTY
42-3
Lot 86
Prop. 20, 23

JOSHUA CREEK
MONTAGE

All offers of sale are made and subject to notice of construction, variances, or permits from the applicable local authority. The above is a preliminary drawing and is not a contract. The above is a preliminary drawing and is not a contract. The above is a preliminary drawing and is not a contract.



VALERY
HOMES

LIBERTY

42-3

Not S&C
Ordn. 20, 23



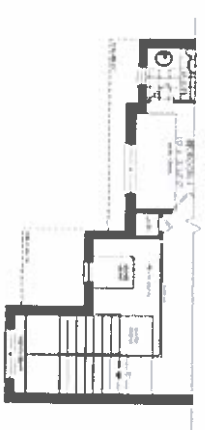
OPTIONAL SECOND FLOOR FLEV A
5 BEDROOM



PARTIAL OPTIONAL SECOND FLOOR FLEV B
5 BEDROOM



PARTIAL OPTIONAL SECOND FLOOR FLEV C
5 BEDROOM



PARTIAL SECOND FLOOR FLEV B



PARTIAL SECOND FLOOR FLEV C

SECOND FLOOR FLEV A

move door towards back wall by 2 feet.

rough-in on separate wall for

install whirlpool tub, build box to hold tub. includes standard tiles

ⓔ GFI

ⓔ Required for Thermostatic Smart Shower Valve

Convert tub to frameless glass shower, chrome

- Smooth Ceiling
- Privacy Locks on all bedroom doors (master)

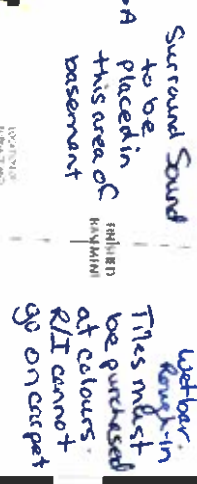
JOSHUA CREEK

MONTAGE

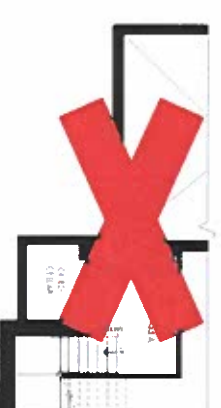
21. All measurements are approximate and subject to change without notice. All dimensions are subject to change without notice. All dimensions are subject to change without notice. All dimensions are subject to change without notice.

VALERY HOMES

867

[illegible]

UNFINISHED BASEMENT ELEV. A & B



- Smooth Ceiling

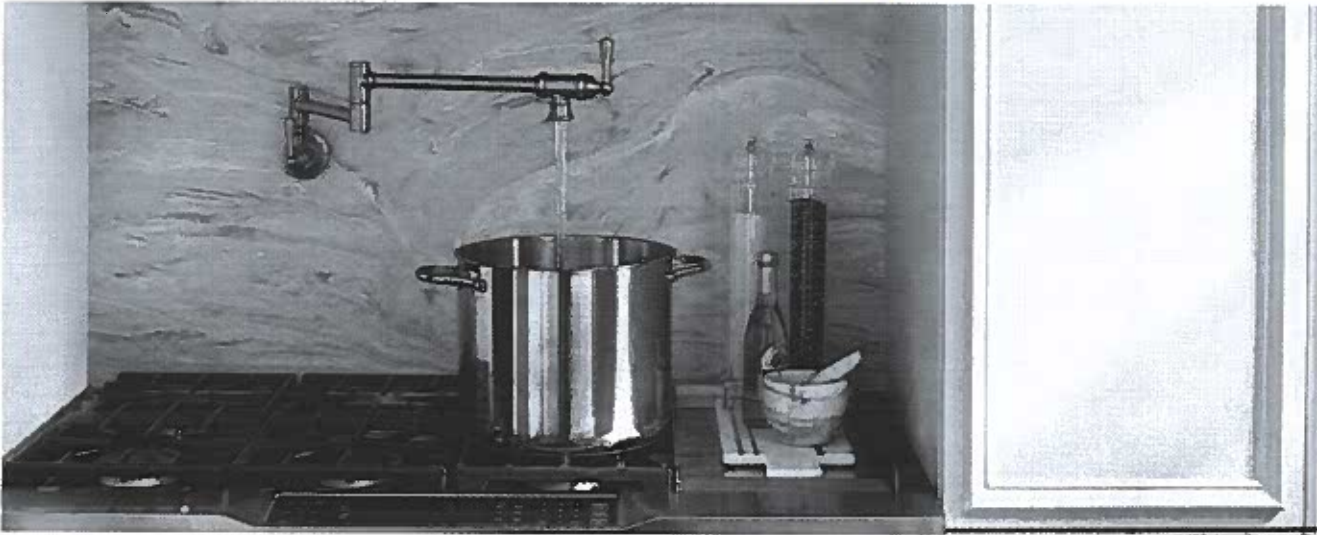
[illegible]

VALERY

Pot Fillers

Lot 86 ○○
Mar. 20, 23

KITCHEN



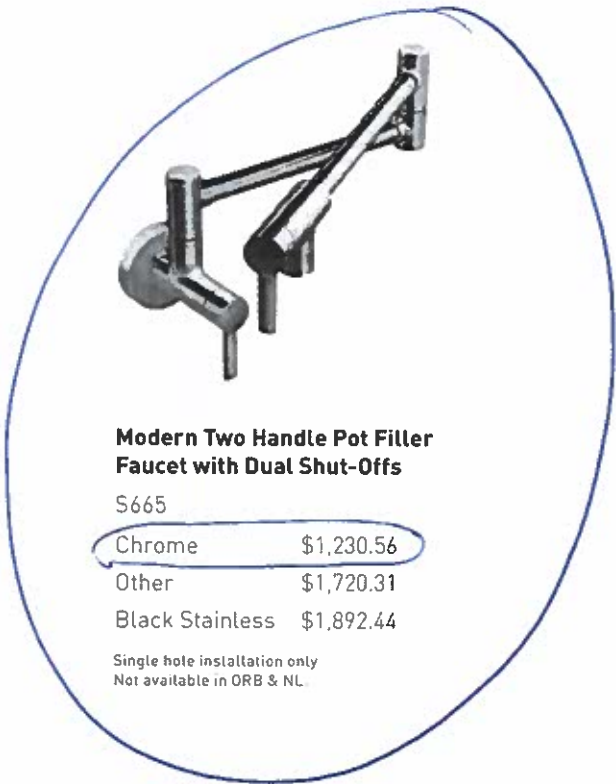
POT FILLERS



Traditional Two Handle Pot Filler
Faucet with Dual Shut-Offs

S664	
Chrome	\$1,230.56
Other	\$1,720.31

Single hole installation only
Not available in BLS



Modern Two Handle Pot Filler
Faucet with Dual Shut-Offs

S665	
Chrome	\$1,230.56
Other	\$1,720.31
Black Stainless	\$1,892.44

Single hole installation only
Not available in ORB & NL

FINISH OPTIONS



Chrome **[C]**, Spot Resist Stainless **[SRS]**, Matte Black **[BL]**,
Oil Rubbed Bronze **[ORB]**, LifeShine® Polished Nickel **[NL]**,
Black Stainless **[BLS]**

To order, combine the model number with one of these finish letter(s): Spot Resist
Stainless (SRS), Matte Black (BL), Oil Rubbed Bronze (ORB), LifeShine® Polished
Nickel (NL) & Black Stainless (BLS).
To order Chrome (C) models, use model number only

Sip™ Beverage Faucets

Not 86 ○ ○
Mar. 20, 23



Transitional Single Handle Beverage Faucet with Filter

S5535 / S5500

Chrome	\$886.31
Other	\$1,136.19

Not available in BLS, BG & ORB
Secondary optional handles included
Single hole installation only



Paterson™ Transitional Single Handle Beverage Faucet with Filter

S5540 / S5500

Chrome	\$841.81
Other	\$1,068.81

Not available in NL, BLS, BG & ORB
Single hole installation only

BEVERAGE FAUCETS



Modern Single Handle Beverage Faucet with Filter

S5550 / S5500

Chrome	\$841.81
Other	\$1,068.81
Black Stainless	\$1,136.13

Not available in NL, BG & ORB
Single hole installation only



Transitional Single Handle Beverage Faucet with Filter

S5520 / S5500

Chrome	\$841.81
Other	\$1,068.81
Black Stainless	\$1,136.13

Not available in NL
Single hole installation only

Modern Single Handle Beverage Faucet with Filter

S5530 / S5500

Chrome	\$841.81
Other	\$1,068.81
Black Stainless	\$1,136.13

Not available in NL & ORB
Single hole installation only



Traditional Single Handle Beverage Faucet with Filter

S5510 / S5500

Chrome	\$841.81
Other	\$1,068.81

Not available in BLS
Single hole installation only



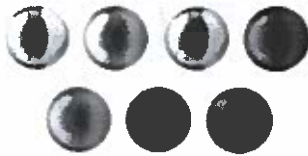
KURV™ Transitional Single Handle Beverage Faucet with Filter

S5560 / S5500

Chrome	\$835.63
Other	\$1,059.50

Not available in BLS, BG & ORB
Single hole installation only

FINISH OPTIONS



Chrome (C), Spot Resist™ Stainless (SRS), LifeShine® Polished Nickel (NL), Black Stainless (BLS), Brushed Gold (BG), Matte Black (BL) & Oil Rubbed Bronze (ORB)

To order, combine the model number with one of these finish letter(s). Spot Resist™ Stainless (SRS), LifeShine® Polished Nickel (NL), Black Stainless (BLS), Brushed Gold (BG), Matte Black (BL) & Oil Rubbed Bronze (ORB). To order Chrome (C) models, use model number only.



ROMAN TUB FAUCETS



Two Handle Roman Tub Faucet
TS93003 / 4796
Chrome \$1,268.38
Other \$1,783.25



Tub Drain Half Kit*
T90331 / 140680
Chrome \$78.13
Other \$195.50



**Two Handle Roman Tub Faucet with
Hand Shower**
TS93004 / 9796
Chrome \$2,206.19
Other \$3,495.50



Tub Drain Half Kit*
T90331 / 140680
Chrome \$78.13
Other \$195.50

TUB FILLER



**Single Handle Free Standing
Tub Filler Faucet**
TS50100 / S93005
Chrome \$3,506.75
Other \$4,799.19
Not available in BL
Mounting hardware required for floormount
ITS50100



Tub Drain Half Kit*
T90331 / 140680
Chrome \$78.13
Other \$195.50

ARRIS FINISH OPTIONS



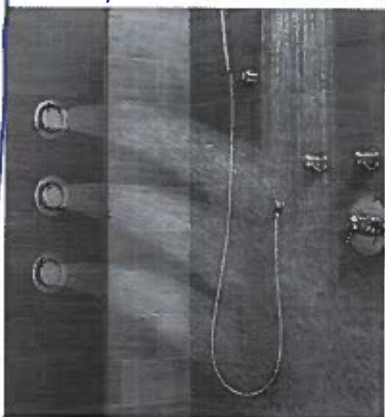
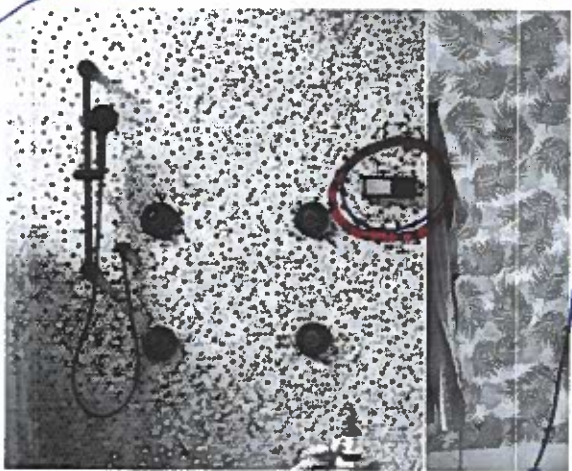
Chrome, Lifeshine® Brushed
Nickel (BN), Matte Black (BL)

To order, combine the model
number with one of these
finish letter(s). Lifeshine®
Brushed Nickel (BN) &
Matte Black (BL). To order
Chrome (C) model, use
model number only.

* Order WR for BL equivalent

Arris®

Primary Ens.
w/ showerhead



EXACTTEMP® ¾"

Ensuite 4



**ExactTemp® ¾" Thermostatic
Vertical Spa with 4 Body Sprays***

TS33002 / TS33003 (x3) / S110 /
S112EP / TS1322 (x4) / 3887EP / A725 /
S3371 / S3600 (x3) / S1300 (x4)

Chrome \$5,737.25
Other \$7,547.62

ExactTemp® ¾" Thermostatic Shower Only*

TS33002 / TS33003 / S110 /
S112EP / S3371 / S3600

Chrome \$2,665.56
Other \$3,270.38

* Primary Ensuite to
have Thermostatic
Smart Shower

ARRIS FINISH OPTIONS



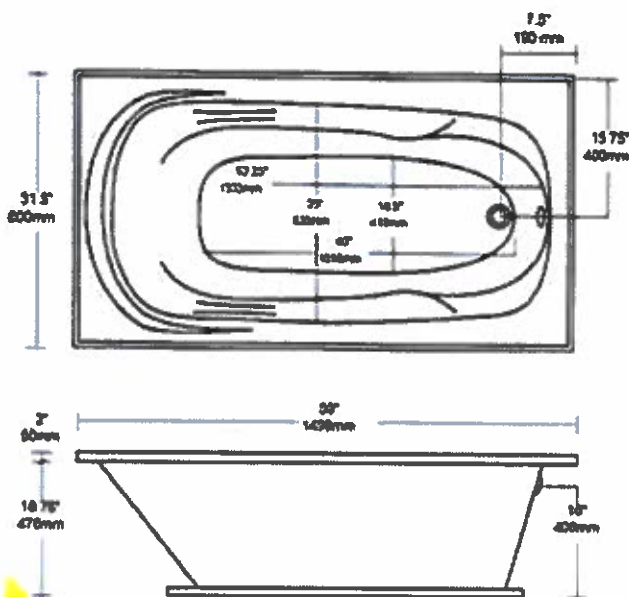
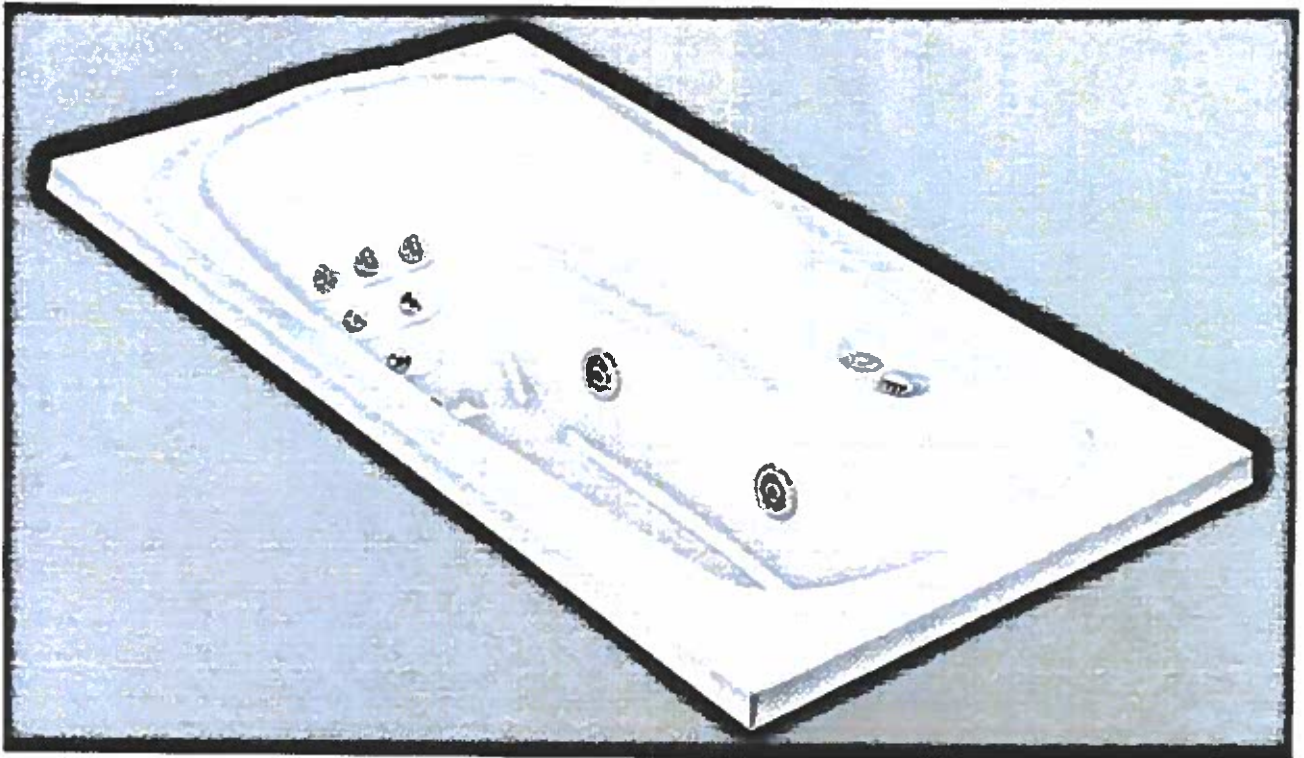
Chrome, Lifeshine® Brushed
Nickel **IBNI**, Matte Black **IBL**

To order, combine the model
number with one of these
finish letters (S), Lifeshine®
Brushed Nickel (IBNI) &
Matte Black (IBL). To order
Chrome (C) model, use
model number only.
* Refer to the Shower
Design Guide for Installation
Instructions

Lot 86 ○○
March 20, 23

MONA LISA

XP532

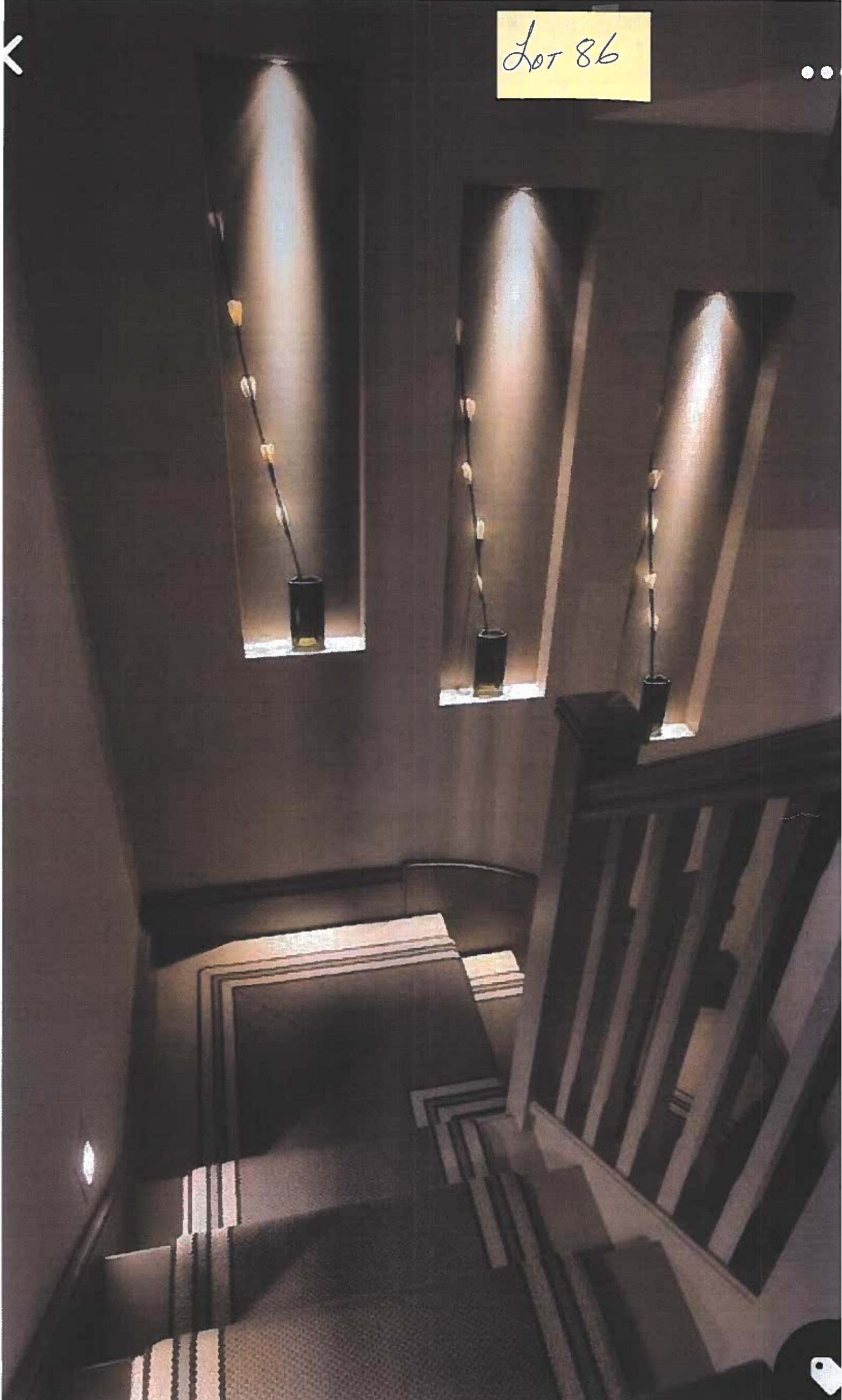


- DOUBLE-REINFORCED BASE
- DEEP SOAKING AREA
- CSA APPROVED
- CAN/ULC-S102 TESTED

Available with WHIRLPOOL or THERAPEUTIC AIR-FORCE options

- Tub with box & standard tile surround
- GFI plug

Lot 86





OSL1020

Step Lights

Single Gang Outdoor Step Light, up to 145
Lumens, 2 Watt
Recessed Downlighting

Features

Body Construction

Fully sealed heavy duty injection molded plastic housing with frosted glass lens. Lens sealed with silicone to prevent any intrusion of water or other contaminants.

Light Output

Powered by a 2-watt Epistar® SMD LED. Available in 3000 K and 4000 K color temperature, providing up to 145 lumen output. 120° beam spread. It maintains a color rendering index greater than 75.

Lumen Maintenance

The LED lamp reduces ongoing maintenance with 70% of initial lumen output after 50,000 hours projected LED life.

LED Driver

Accommodates an input voltage of 100-240V AC via 9" 18AWG leads (black is hot, white is neutral/common). 60Hz.

Mounting

This fixture is designed to mount directly in to standard single gang J-Boxes, 2"x4" with 21.0 cu. in. minimum volume

(with at least 1 1/2" inner clearance – free of any interference with device box parts) fitted with a gasket to seal against intrusion of water and other contaminants in wet locations (two gaskets included, gasket used depends on application). Designed to be mounted horizontally or vertically, depending on faceplate design and application.

Faceplates

Optional powder-coated or electroplated cast aluminum optical faceplates available for horizontal and/or vertical mounting (refer to page 2 for available faceplate options). Available in black, brushed nickel and flat white corrosion resistant paint.

Operating Temperature

-20°C ~ 40°C (-4°F ~ 104°F).

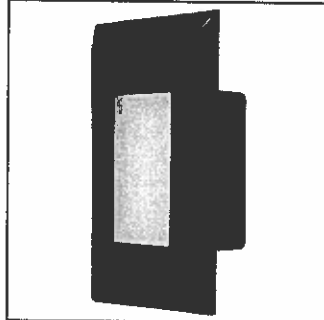
Environment

Suitable for use in wet locations. Rated IP67.

Approvals

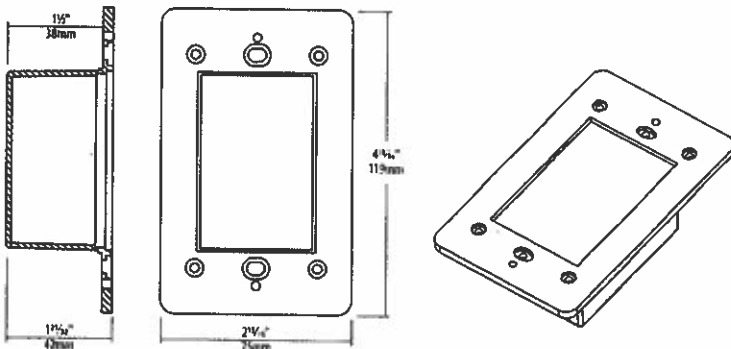
cETLus.

SPECIFICATION	
Application	Outdoor Lighting
Approved Location	Dry / Wet
Beam Angle	120°
CCT	3000 K / 4000 K
Certification	cETLus
CRI	75+
Dimming	No
Lumen	140 / 145
Lumen Maintenance	70% @ 50,000 hrs
Lumens per Watt	70 / 72.5
Max. Temp.	40°C
Min. Start Temp.	-20°C
Material	Plastic and glass
Primary Voltage	120-240V
Warranty	3 years
Wattage	2W



Description

This LED step light is designed for installation in to indoor or outdoor wall mount applications using standard junction boxes. Three optional distinct optical faceplates are available to provide unique light distribution patterns. Designed for horizontal or vertical mounting, depending on application. Ideal for both residential and commercial applications.



Notes: Accessories should be ordered separately. For additional options please consult your Liteline representative. Due to our continued efforts to improve our products, product specifications are subject to change without notice.

Ordering Guide

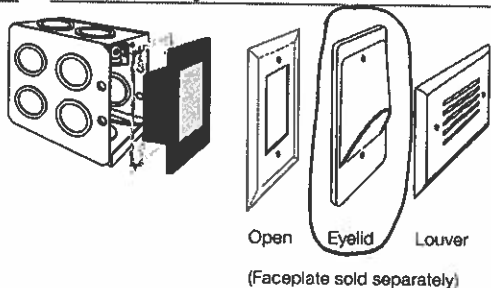


OSL1020-30K
Single gang outdoor LED step light, 2W, 3000 K, 140 lumens.



OSL1020-40K
Single gang outdoor LED step light, 2W, 4000 K, 145 lumens.

Faceplate Styles



Open Eyelid Louver
(Faceplate sold separately)

* Accessories on page 2.

Liteline Corporation	Telephone	Fax
Copyright © 2021	416.996.1856	905.709.5255
All rights reserved.	1.866.730.7704	1.888.738.9736

LITELINE.COM

REV 7.14.21

Not 86 U O

Accessories



OSL-OPN1-BK
Single gang open faceplate, Black. For horizontal or vertical mounting.



OSL-LVR1-BK
Single gang louver faceplate, Black. For horizontal mounting.



OSL-EYE1-BK
Single gang eyelid faceplate, Black. For vertical mounting.



OSL-OPN1-BN
Single gang open faceplate, Brushed Nickel. For horizontal or vertical mounting.



OSL-LVR1-BN
Single gang louver faceplate, Brushed Nickel. For horizontal mounting.



OSL-EYE1-BN
Single gang eyelid faceplate, Brushed Nickel. For vertical mounting.



OSL-OPN1-FWH
Single gang open faceplate, Flat White. For horizontal or vertical mounting.



OSL-LVR1-FWH
Single gang louver faceplate, Flat White. For horizontal mounting.



OSL-EYE1-FWH
Single gang eyelid faceplate, Flat White. For vertical mounting.

Votatec

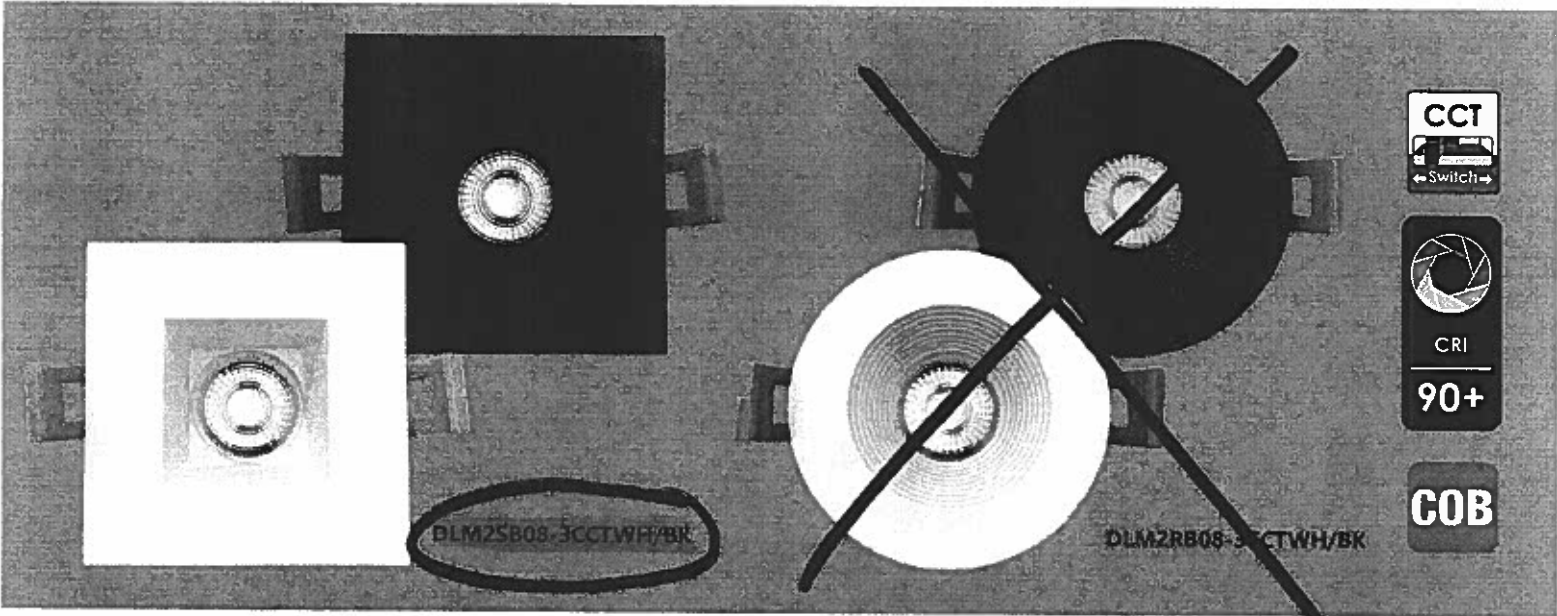
Innovation & Quality

www.votatec.ca

Not 86 000
May 29, 23
Niche Lights

2" Round & Square Baffle Downlight
3Way CCT Adjustable

2" Round & Square Baffle Downlight
3Way CCT Adjustable



Specifications

Models: DLM2RB08-3CCTWH/BK	
Applications	General Lighting
Wattage	8W
Color Temperature	3CCT 3000/4000/5000 K
Lumen Output	650lm
Halogen Equivalent	50W
Beam Angle	38
CRI	90
Driver Input	120 VAC
Power Factor	0.9
Dimming	TRIAC Dimmers %100-%10
Cut Out	2 - 7/8 (68mm)
Approved Location	Insulated ceiling, Indoor & Damp Location
Ambient Temperature	- 20 C to + 40 C (-4F - 104 F)
Air Tight	Yes
Projected Life	%70 Light output at 50,000 hours
Certification	ETL/ES
Warranty	5 Years warranty

Specifications

Black

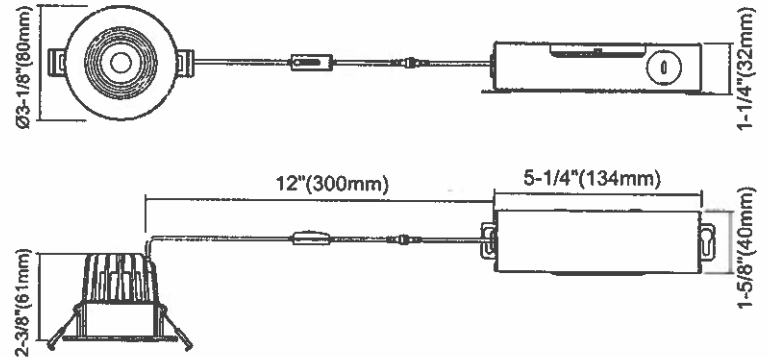
Models: DLM2SB08-3CCTWH/BK	
Applications	General Lighting
Wattage	8W
Color Temperature	3CCT 3000/4000/5000 K
Lumen Output	650lm
Halogen Equivalent	50W
Beam Angle	38
CRI	90
Driver Input	120 VAC
Power Factor	0.9
Dimming	TRIAC Dimmers %100-%10
Cut Out	2 - 7/8 (68mm)
Approved Location	Insulated ceiling, Indoor & Damp Location
Ambient Temperature	- 20 C to + 40 C (-4F - 104 F)
Air Tight	Yes
Projected Life	%70 Light output at 50,000 hours
Certification	ETL/ES
Warranty	5 Years warranty

2" Round & Square Baffle Downlight 3Way CCT Adjustable

Key Features

- 2" Round & Square LED Downlight with integral driver in connection box
- Type IC Rated-no housing needed
- Multiple CCT
- Flexibility to switch color temperature during installation to suit a specific application, just adjust the color temperature with the slide switch located on the wire
- Baffle reflector design
- Available shape: Round & Square
- Cut hole in ceiling and snap fixture in opening with attached spring clips
- Aluminium construction

Dimensions



Dimensions

