

CONSTRUCTION SUMMARY

Joshua Creek - 68 BAYSHIRE (44-03) B

Registere Plan Number: Municipal Address: Closing: **20-Oct-23**

BONUS

Inv.488 30 Line 9906 13Dec22 / 30Dec22	1 - BONUS PACKAGE: \$5,000.00 WORTH OF UPGRADES FROM VALERY HOMES DÉCOR CENTRE IS BEING APPLIED TOWARD THE STRUCTURAL APPOINTMENT Note:
---	--

CEILING

Inv.488 4 Line 9879 13Dec22 / 30Dec22	1 - PRIMARY ENSUITE: COFFERED - TRAY CEILING - MASTER BEDROOM - TRAY CEILING Note:
--	---

CONSTRUCTION

Inv.488 3 Line 9878 13Dec22 / 30Dec22	1 - GARAGE: GARAGE INSULATION - ALL WALLS AND CEILING Note:
--	--

ELECTRICAL

Inv.488 16 Line 9891 13Dec22 / 30Dec22	1 - FAMILY ROOM: ELECTRICAL - DEDICATED 15 AMP 120 V FOR ELECTRIC FIREPLACE Note:
---	--

Inv.488 11 Line 9886 13Dec22 / 30Dec22	1 - UPPER HALL AT STAIRS: CEILING LIGHT ROUGH IN - FOR 1 CEILING LIGHT - ON SEPARATE SWITCH (DOES NOT INCLUDE FIXTURE) Note: Location may vary slightly due to joist location
---	--

Inv.488 12 Line 9887 13Dec22 / 30Dec22	3 - FAMILY ROOM - DINING ROOM - UPPER HALL: CEILING LIGHT -REINFORCE CEILING LIGHT FOR FUTURE CHANDELIER. MAX. 50 POUNDS (THREE AREAS) Note: Location may vary slightly due to joist location
---	--

Inv.488 13 Line 9888 13Dec22 / 30Dec22	1 - INSTALL SURGE PROTECTOR TO HYDRO PANEL Note:
---	---

Inv.488 18 Line 9894 13Dec22 / 30Dec22	1 - FAMILY ROOM: ELECTRICAL - DEDICATED 15 AMP 120 V FOR FUTURE TV ABOVE FIREPLACE Note:
---	---

Inv.488 29 Line 9909 13Dec22 / 30Dec22	1 - KITCHEN: **PLEASE NOTE ELECTRICAL LOCATIONS FOR THE APPLIANCES, ESP. THE FRIDGE** SEE SPECS ATTACHED Note:
---	---

Inv.488 20 Line 9896 13Dec22 / 30Dec22	1 - KITCHEN: INSTALL ELECTRICAL - DEDICATED 15 AMP 120 V FOR DISHWASHER Note:
---	--

CONSTRUCTION SUMMARY

Joshua Creek - 68 BAYSHIRE (44-03) B

Registere Plan Number: Municipal Address: Closing: **20-Oct-23**

Inv.488 21	1 - KITCHEN: INSTALL RECEPTACLES - ADDITIONAL 15 AMP 120 VOLT RECEPTACLE (NON-DEDICATED) FOR GAS STOVE
Line 9898	Note:
13Dec22 / 30Dec22	

Inv.488 24	1 - KITCHEN: INSTALL ELECTRICAL - ROUGH-IN FOR 15 AMP, 120 VOLT BUILT-IN MICROWAVE IN ISLAND
Line 9902	Note:
13Dec22 / 30Dec22	

Inv.488 25	1 - KITCHEN / BAR AREA: ELECTRICAL - DEDICATED 15 AMP 120 V FOR BEVERAGE FRIDGE
Line 9903	Note:
13Dec22 / 30Dec22	

FIREPLACE

Inv.488 15	1 - FAMILY ROOM: FIREPLACE - ALLURAVISION 50 INCH DEEP DEPTH ELECTRIC FIREPLACE - GLASS FRONT - BLACK - INCLUDES SOUTH BEACH LOG SET - NEFL50CHD. IN LIEU OF GAS FIREPLACE
Line 9890	Note:
13Dec22 / 30Dec22	

HVAC

Inv.488 17	1 - AIR CONDITIONER AND STEAM HUMIDIFIER - ML 14, 14 SEER - 3.5 TON - WITH STEAM HUMIDIFIER
Line 9892	Note:
13Dec22 / 30Dec22	

Inv.488 22	1 - KITCHEN: INSTALL GAS PIPING AND OTHER - GAS LINE R/I FOR MAIN FLOOR - STOVE
Line 9899	Note:
13Dec22 / 30Dec22	

Inv.488 23	1 - KITCHEN: INSTALL GAS PIPING AND OTHER - UPGRADE STOVE VENT FROM STANDARD 6 INCH TO 10 INCH
Line 9900	Note:
13Dec22 / 30Dec22	

INTERIOR DOOR & TRIM

Inv.488 7	32 - INSTALL CONMORE DOOR, 5 PANEL, HOLLOW CORE 96" H THROUGHOUT HOUSE (32 TOTAL)
	DOES NOT INCLUDE THE DEN
Line 9882	Note:
13Dec22 / 30Dec22	

Inv.488 8	1 - DEN: INSTALL 3 PANEL FRENCH DOOR, MDF WHITE ACID ETCHED GLASS 96" H
Line 9883	Note:
13Dec22 / 30Dec22	

Inv.488 9	1 - GRIP SET- CONCEIRGE 400 DEADBOLT IN (MATTE BLACK)
Line 9884	Note:
13Dec22 / 30Dec22	

Inv.488 10	1 - INTERIOR DOOR HARDWARE-SINGLES, VEGA IN SATIN NICKEL. INCL. EXTERIOR DOOR, NOT GRIP SET.
Line 9885	Note:
13Dec22 / 30Dec22	

CONSTRUCTION SUMMARY

Joshua Creek - 68 BAYSHIRE (44-03) B

Registere Plan Number: Municipal Address: Closing: 20-Oct-23

INTERIOR DOORS & TRIM

Inv.488 5	25 - SECOND FLOOR: INTERIOR DOOR & TRIM - INSTALL TWENTY-FIVE (25) EXTENDED HEIGHT DOOR 96 INCH - 2ND FLOOR, UPGRADE FROM STD. 84"
Line 9880	Note:
13Dec22 / 30Dec22	

Inv.488 6	4 - BASEMENT: INTERIOR DOOR & TRIM - INSTALL FOUR (4) EXTENDED HEIGHT DOOR 96 INCH - 2ND FLOOR, UPGRADE FROM STD. 84"
Line 9881	Note:
13Dec22 / 30Dec22	

MISCELLANEOUS

Inv.488 31	1 - Purchaser has attended a Structural appointment at the Decor Centre & has DECLINED any additional upgrades and accepts and acknowledges that there will be no further structural changes/additions/deletions to be made upon signing
Line 9907	Note: Purchaser accepts & acknowledges that all upgrades are to be approved by construction before the invoice is accepted
13Dec22 / 30Dec22	

PLUMBING

Inv.488 26	1 - ADDITIONAL PLUMBING-WATER CONNECTION WHEN ADDING POT FILLER
Line 9904	Note:
13Dec22 / 30Dec22	

Inv.488 27	1 - KITCHEN: INSTALL POT FILLER BEHIND STOVE: MOEN #S665 SPOT RESISTANT STAINLESS- MODERN TWO HANDLE POT FILLER FAUCET WITH DUAL SHUT OFFS
Line 9905	Note:
13Dec22 / 30Dec22	

Inv.488 14	1 - KITCHEN: EXTRA ROUGH-IN LINE FOR FRIDGE ICE MAKER WITH SHUT-OFF
Line 9889	Note:
13Dec22 / 30Dec22	

VACCUM/BELL

Inv.488 1	1 - CAT 6A LOCATION SKETCH. LOCATIONS MAY VARY SLIGHTLY DUE TO JOIST LOCATIONS (STD)
Line 9876	Note:
13Dec22 / 30Dec22	

Inv.488 28	1 - CENTRAL VACUUM - CENTRAL VAC PIPING COMPLETE ROUGH-IN TO GARAGE - TWO OUTLETS PER FLOOR AND ONE OUTLET IN BASEMENT R/I ONLY
Line 9908	Note:
13Dec22 / 30Dec22	

Inv.488 19	1 - FAMILY ROOM: INSTALL 1 1/4" ORANGE FLEX CONDUIT ABOVE FIREPLACE FOR FUTURE TV
Line 9895	Note: LOCATIONS MAY VARY SLIGHTLY DUE TO JOIST LOCATIONS
13Dec22 / 30Dec22	

WINDOWS

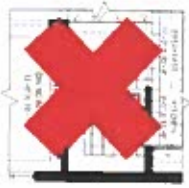
Inv.488 2	4 - BASEMENT: BASEMENT WINDOW - ENLARGE FOUR (4) STANDARD WINDOW TO- 36 X 30
Line 9877	Note: MAY REQUIRE A WINDOW WELL
13Dec22 / 30Dec22	

Lot 68 (K)

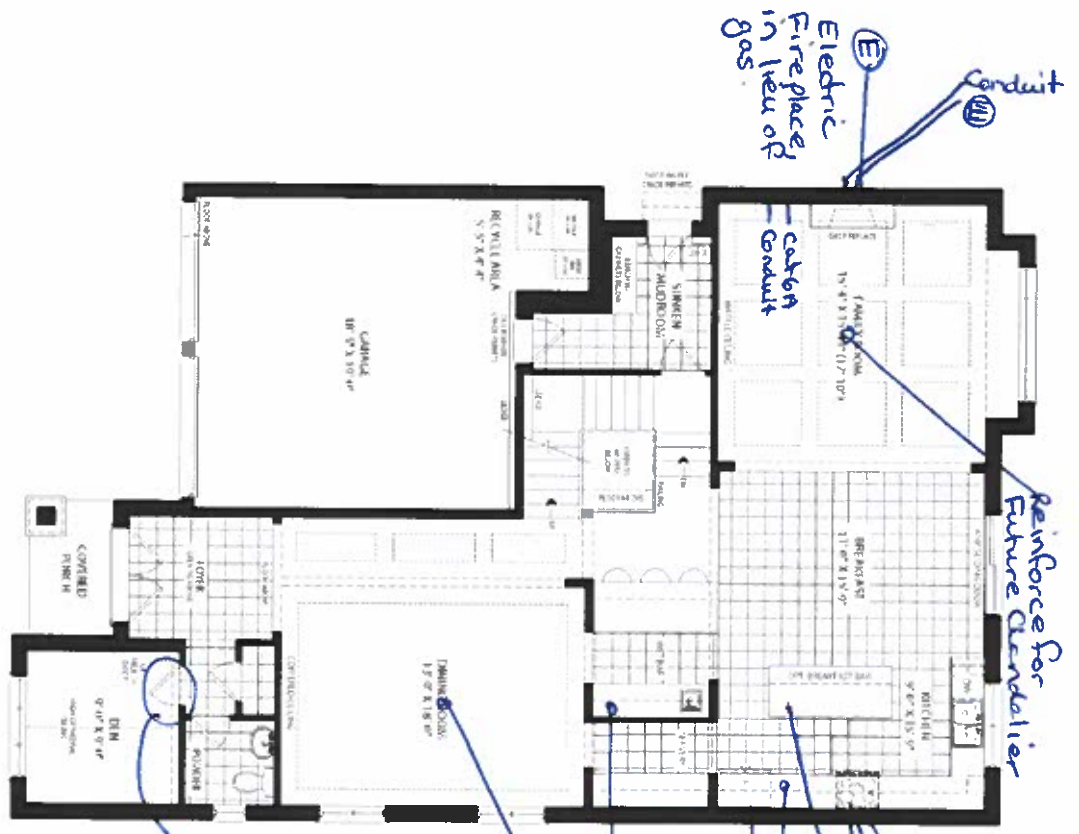
Dec 13, 22



PARTIAL GROUND FLOOR ELEV. A, B & C WITH OPT. EXTERIOR STAIR



OPTIONAL GROUND FLOOR ELEV. A, B & C



GROUND FLOOR ELEV. A



PARTIAL GROUND FLOOR ELEV. B



PARTIAL GROUND FLOOR ELEV. C

- Change Door style to Connore Throughout house

JOSHUA CREEK MONTAGE

All dimensions approximate and subject to final approval. All dimensions shall be in accordance with the latest code requirements. For pricing and terms and conditions, please refer to the program. For more information, please contact the architect. All rights reserved. © 2012. All rights reserved. Valery Homes.

VALERY HOMES

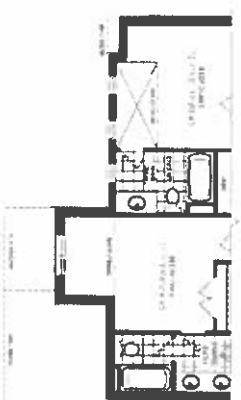


OPTIONAL SECOND FLOOR ELEV. A
5 BEDROOM

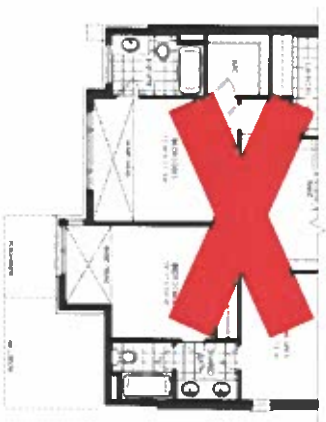
- Extended height doors
(as) Commore.



SECOND FLOOR ELEV. A



PARTIAL OPTIONAL SECOND FLOOR ELEV. B
5 BEDROOM



OPTIONAL SECOND FLOOR ELEV. C
5 BEDROOM



PARTIAL SECOND FLOOR ELEV. B



PARTIAL SECOND FLOOR ELEV. C

JOSHUA CREEK
MONTAGE

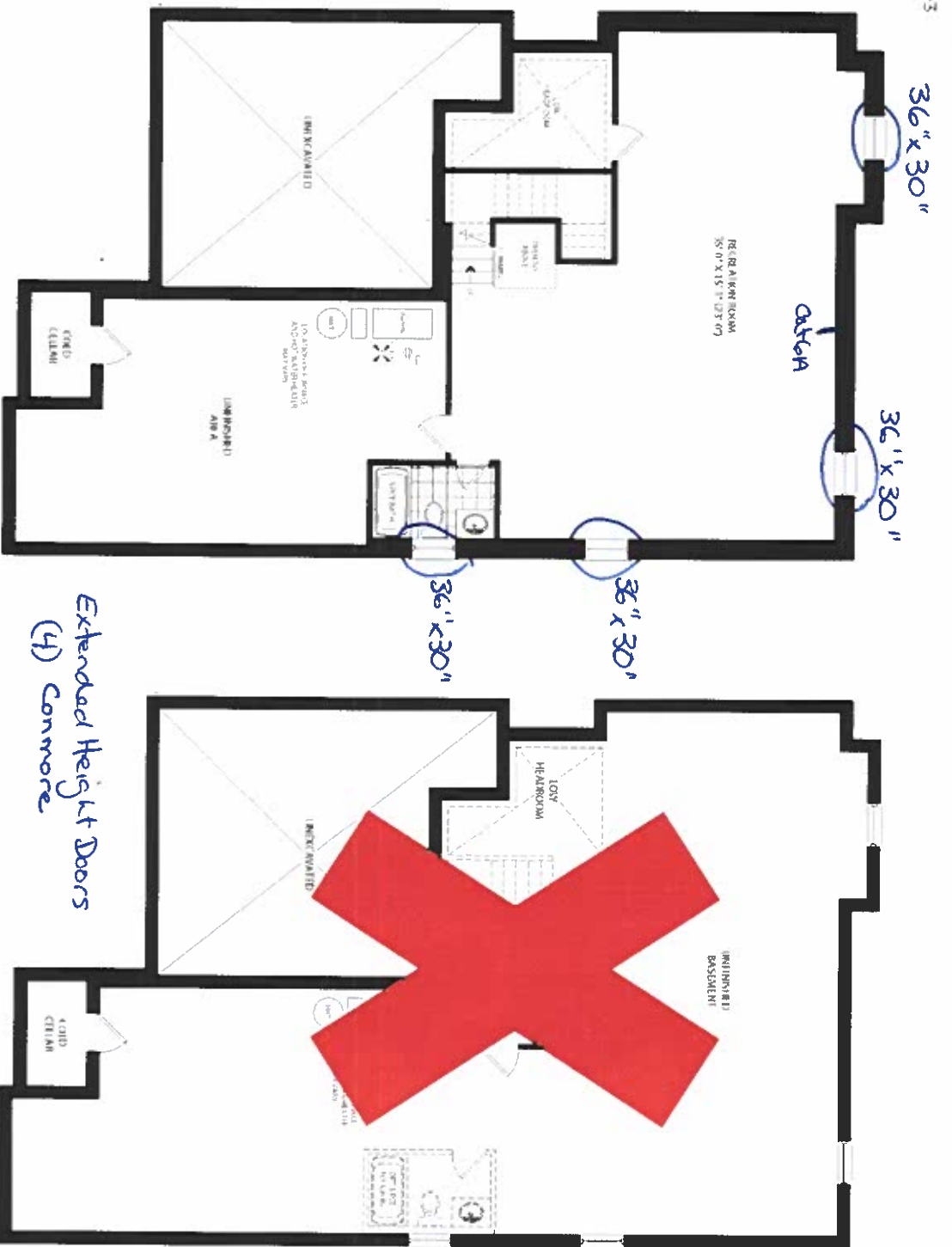
All dimensions unless otherwise noted are for the finished floor. Dimensions may vary due to the manufacturer's design of doors and windows. All dimensions are subject to change without notice. Drawings are for informational purposes only and do not constitute a contract. All dimensions are for the finished floor. All dimensions are for the finished floor. All dimensions are for the finished floor.

VALEARY
HOMES

Lot 68
Dec. 13, 22
DM

BAYSHIRE

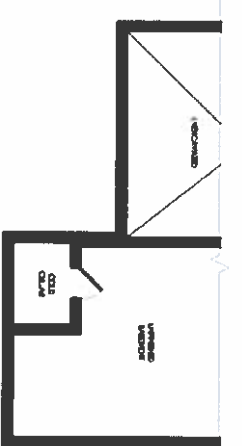
44-3



FINISHED BASEMENT ELEV. A

UNFINISHED BASEMENT ELEV. A

*Extended Height Doors
(4) Corners*



PARTIAL BASEMENT FLOOR ELEV. B



PARTIAL BASEMENT FLOOR ELEV. C



FINISHED BASEMENT FLOOR ELEV. A, B & C WITH OPT. EXTERIOR STAIR



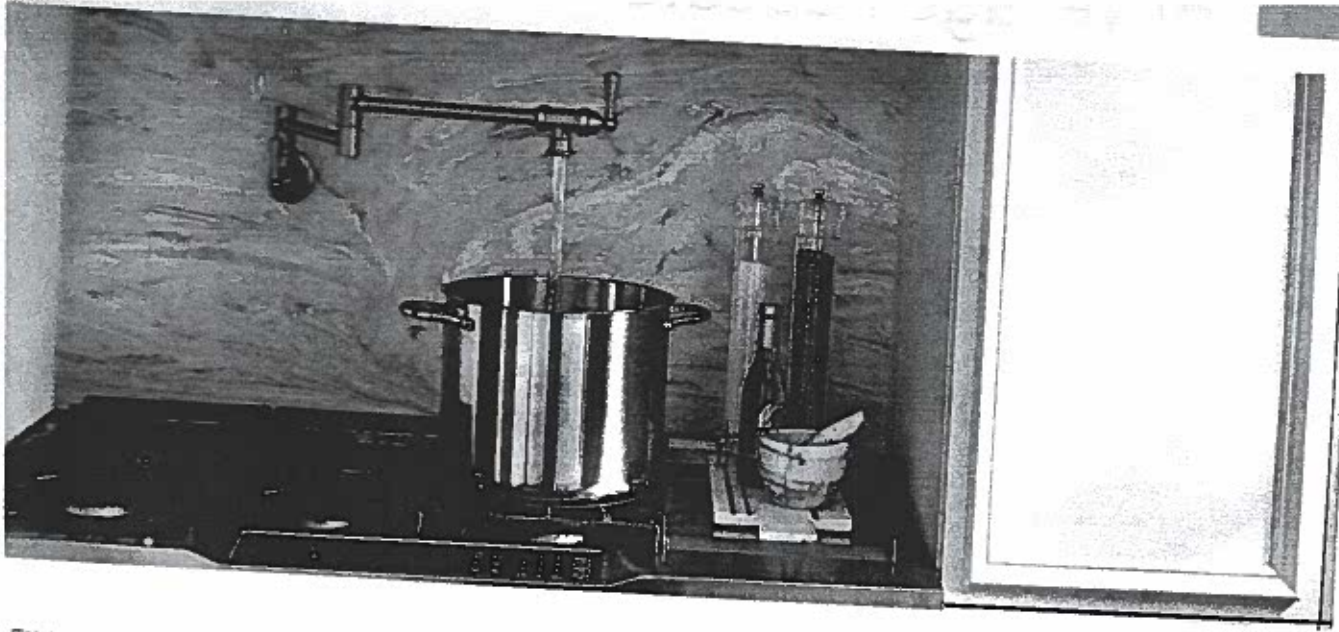
PARTIAL BASEMENT PLAN ELEV. A, B & C WITH OPT. EXTERIOR STAIR

Oct 68
Alas 13, 22

JOSHUA CREEK MONTAGE

Dimensions are approximate and subject to error or variation. Dimensions may also vary due to different model options. Always check the actual dimensions on the drawing. A solid line indicates a fixed dimension, a dashed line indicates a dimension that may vary. Always check the actual dimensions on the drawing. Always check the actual dimensions on the drawing.

VALERY HOMES



FILLERS

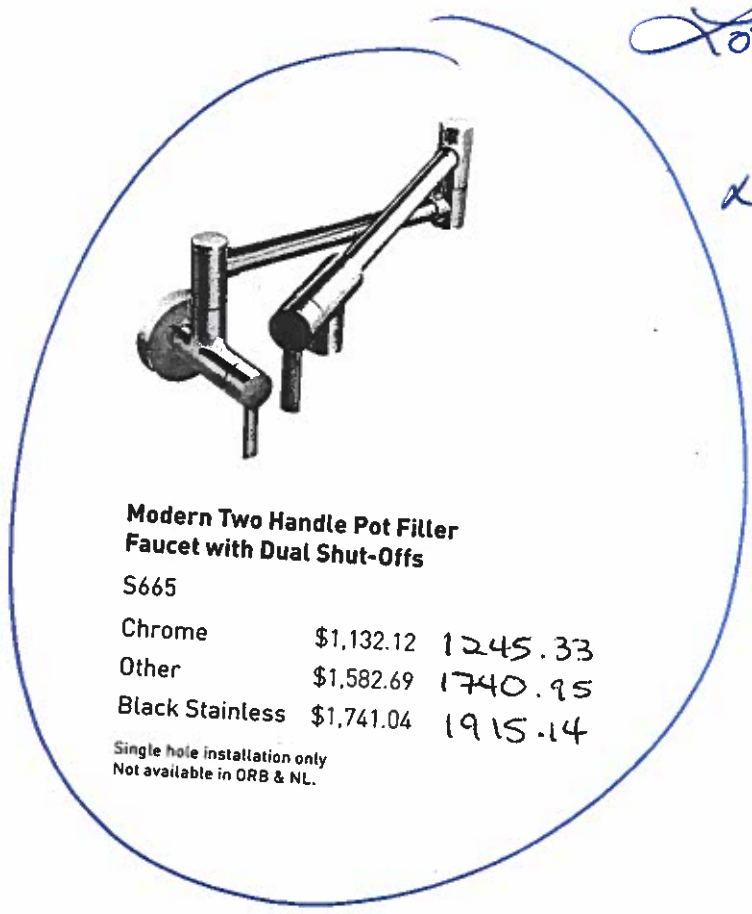


Traditional Two Handle Pot Filler with Dual Shut-Offs

\$1,132.12 1245.33
\$1,582.69 1740.95

Installation only
Not in BLS

BG - Brushed Gold



Modern Two Handle Pot Filler Faucet with Dual Shut-Offs

S665
Chrome \$1,132.12 1245.33
Other \$1,582.69 1740.95
Black Stainless \$1,741.04 1915.14

Single hole installation only
Not available in ORB & NL.

Lot 68
④
Dec. 13, 22

FINISH OPTIONS



Chrome (C), Spot Resist Stainless (SRS), Matte Black (BL), Oil Rubbed Bronze (ORB), LifeShine® Polished Nickel (NL), Black Stainless (BLS)

To order, combine the model number with one of these finish letters: Spot Resist Stainless (SRS), Matte Black (BL), Oil Rubbed Bronze (ORB), LifeShine® Polished Nickel (NL) & Black Stainless (BLS).
To order Chrome (C) models, use model number only.