

## CONSTRUCTION SUMMARY

**Joshua Creek - 57      ALDERCREST (42-02) C**

Registere Plan Number:    Municipal Address:    Closing: **27-Oct-23**

### BONUS

|   |   |
|---|---|
| Inv.526<br>22<br>Line 10621<br><br>22Feb23 / 2Jan24 | <b>1 - BONUS PACKAGE: \$5,000.00 WORTH OF UPGRADES FROM VALERY HOMES DÉCOR CENTRE IS BEING APPLIED TOWARD THE STRUCTURAL APPOINTMENT</b><br><br>Note: |
|---|---|

### CONSTRUCTION

|   |  |
|---|--|
| Inv.526<br>15<br>Line 10616<br><br>22Feb23 / 2Jan24 | <b>1 - UPPER HALL: INSTALL SKY LIGHT. 2' X 4'</b><br><br>Note: LOCATION MAY VARY SLIGHTLY DUE TO JOIST LOCATION. LOCATION TO BE APPROVED BY CONSTRUCTION |
|---|--|

### ELECTRICAL

|   |   |
|---|---|
| Inv.526<br>16<br>Line 10617<br><br>22Feb23 / 2Jan24 | <b>1 - KITCHEN: INSTALL APPLIANCE - RELOCATE STANDARD APPLIANCE- FRIDGE TO MOVE TOWARDS THE CORNER BY APPROX. ONE FOOT TO ACCOMODATE THE WALL OVEN. SEE SKETCH</b><br><br>Note: |
|---|---|

|   |   |
|---|---|
| Inv.526<br>17<br>Line 10618<br><br>22Feb23 / 2Jan24 | <b>1 - KITCHEN: INSTALL CEILING FIXTURE - RELOCATE STANDARD CEILING FIXTURE</b><br><br>Note: Location may vary slightly due to joist location |
|---|---|

|   |  |
|---|--|
| Inv.526<br>18<br>Line 10619<br><br>22Feb23 / 2Jan24 | <b>1 - KITCHEN: INSTALL CEILING LIGHT ROUGH IN - FOR 1 CEILING LIGHT, ON EXISTING SWITCH (DOES NOT INCLUDE FIXTURE). TO GO BESIDE THE STANDARD KITCHEN LIGHT THAT HAS BEEN MOVED OVER THE ISLAND</b><br><br>Note: Location may vary slightly due to joist location |
|---|--|

|  |  |
|--|--|
| Inv.526<br>7<br>Line 10607<br><br>22Feb23 / 2Jan24 | <b>1 - KITCHEN: INSTALL ELECTRICAL - ROUGH-IN FOR 40 AMP 220 V BUILT-IN WALL OVEN, COOK TOP OR SPEED OVEN</b><br><br>Note: |
|--|--|

|   |   |
|---|---|
| Inv.526<br>10<br>Line 10610<br><br>22Feb23 / 2Jan24 | <b>2 - FAMILY ROOM: INSTALL TWO (2) WALL SCONE ROUGH IN - COMPLETE WITH 1 SWITCH, ON EITHER SIDE OF FIREPLACE. 5'-7" HIGH OFF FINISHED FLOOR</b><br><br>Note: |
|---|---|

|   |  |
|---|--|
| Inv.526<br>11<br>Line 10611<br><br>22Feb23 / 2Jan24 | <b>2 - STAIRS- MAIN FLOOR TO SECOND FLOOR LANDINGS: INSTALL TWO (2) WALL SCONE ROUGH IN - COMPLETE WITH 1 SWITCH ON EACH LANDING OF THE STAIRCASE</b><br><br>Note: |
|---|--|

|   |  |
|---|--|
| Inv.526<br>12<br><br>Line 10612<br><br>22Feb23 / 2Jan24 | <b>1 - 2ND FLOOR UPPER HALL ABOVE FOYER: CEILING LIGHT ROUGH IN - FOR 1 CEILING LIGHT - ON SEPARATE SWITCH (DOES NOT INCLUDE FIXTURE)</b><br><br>TO GO PAST RAILING, BUT BEFORE THE CATHEDRAL CEILING STARTS. SEE SKETCH<br><br>Note: Location may vary slightly due to joist location |
|---|--|

|   |  |
|---|--|
| Inv.526<br>13<br><br>Line 10613<br><br>22Feb23 / 2Jan24 | <b>7 - SIDE AND REAR OF HOUSE: INSTALL COACH LIGHT ROUGH IN - EXTERIOR - ROUGH-INS ONLY</b><br><br><b>7 TOTAL, STANDARD HEIGHT.</b><br><br>Note: THE 2 ROUGH-INS ON THE LEFT SIDE OF THE HOUSE TO BE ON THE SAME SWITCH. THE 2 ON THE RIGHT TO BE ON THE SAME SWITCH, AND THE 3 AT THE REAR TO BE ON THEIR OWN SWITCH. |
|---|--|

## CONSTRUCTION SUMMARY

**Joshua Creek - 57      ALDERCREST (42-02) C**

Registere Plan Number:    Municipal Address:    Closing: **27-Oct-23**

|   |   |
|---|---|
| Inv.526<br>14<br>Line 10615<br><br>22Feb23 / 2Jan24 | 1 - SECOND FLOOR ROUGH-IN: REINFORCE FOR FUTURE CHANDELIER, MAX WEIGHT 50 POUNDS<br><br>Note: |
|---|---|

### EXTERIOR DOOR

|   |   |
|---|---|
| Inv.526<br>21<br><br>Line 10623<br><br>22Feb23 / 2Jan24 | 1 - EXTERIOR DOOR - ADDITIONAL FRONT DOOR TO MAKE DOUBLE DOOR ENTRY - WITHOUT GLASS<br><br>SIDE LITE MUST BE DELETED TO ACCOMODATE ADDITIONAL DOOR<br><br>Note: |
|---|---|

|   |  |
|---|--|
| Inv.526<br>20<br>Line 10624<br><br>22Feb23 / 2Jan24 | 1 - EXTERIOR DOOR - CHANGE EXISTING FRONT DOOR TO HAVE NO GLASS. IT WILL BE SOLID<br><br>Note: |
|---|--|

### HVAC

|   |   |
|---|---|
| Inv.526<br>19<br>Line 10620<br><br>22Feb23 / 2Jan24 | 1 - AIR CONDITIONER - ML 14 SEER - 3.5 TON<br><br>Note: |
|---|---|

### INTERIOR DOOR & TRIM

|  |   |
|--|---|
| Inv.526<br>5<br>Line 10605<br><br>22Feb23 / 2Jan24 | 1 - INTERIOR DOOR HARDWARE-SINGLES, PACE LINE IN MATTE BLACK. INCL. EXTERIOR DOOR, NOT GRIP SET.<br><br>Note: |
|--|---|

|  |  |
|--|--|
| Inv.526<br>6<br>Line 10606<br><br>22Feb23 / 2Jan24 | 1 - GRIP SET- STRAIT IN MATTE BLACK<br><br>Note: |
|--|--|

### INTERIOR DOORS & TRIM

|  |   |
|--|---|
| Inv.526<br>4<br><br>Line 10604<br><br>22Feb23 / 2Jan24 | 8 - SECOND FLOOR: INTERIOR DOOR & TRIM - EXTENDED HEIGHT DOOR 96 INCH - 2ND FLOOR, UPGRADE FROM STD. 84"<br><br>**ONLY THE HALLWAY DOORS ON SECOND FLOOR<br><br>Note: |
|--|---|

### MISCELLANEOUS

|   |  |
|---|--|
| Inv.526<br>23<br><br>Line 10622<br><br>22Feb23 / 2Jan24 | 1 - Purchaser has attended a Structural appointment at the Decor Centre & has DECLINED any additional upgrades and accepts and acknowledges that there will be no further structural changes/additions/deletions to be made upon signing.<br><br>Note: Purchasers are aware & accept that ANY changes made to upgrades after signing this Purchasers Extra Form are subject to an administration fee<br><br>Purchaser accepts & acknowledges that all upgrades are to be approved by construction before the invoice is accepted |
|---|--|

### PLUMBING

|  |  |
|--|--|
| Inv.526<br>8<br>Line 10608<br><br>22Feb23 / 2Jan24 | 1 - KITCHEN: INSTALL EXTRA ROUGH-IN LINE FOR FRIDGE ICE MAKER WITH SHUT-OFF<br><br>Note: |
|--|--|



CONSTRUCTION SUMMARY

Joshua Creek - 57      ALDERCREST (42-02) C

Registere Plan Number:    Municipal Address:    Closing: 27-Oct-23

VACCUM/BELL

|                  |  |
|------------------|--|
| Inv.526<br>9     | 4 - BEDROOM 2, 3, 4 AND DEN: CAT-6A NETWORK CABLE FOR WIRELESS ACCESS POINT - TERMINATED |
| Line 10609       | Note: LOCATIONS MAY VARY SLIGHTLY DUE TO JOIST LOCATIONS                                 |
| 22Feb23 / 2Jan24 |  |
| Inv.526<br>1     | 1 - CAT 6A LOCATION SKETCH. LOCATIONS MAY VARY SLIGHTLY DUE TO JOIST LOCATIONS (STD)     |
| Line 10601       | Note:  |
| 22Feb23 / 2Jan24 |  |

WINDOWS

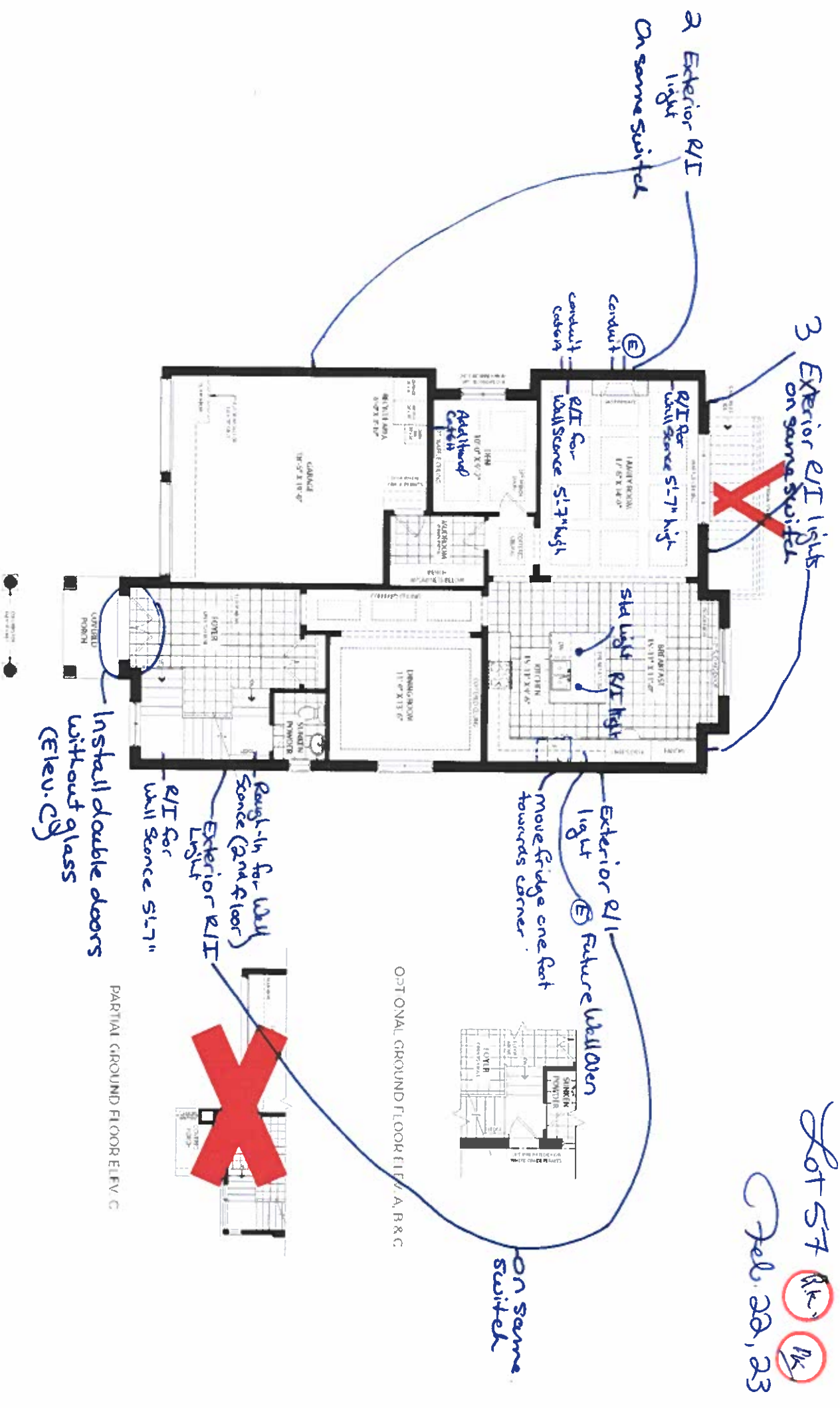
|                  |   |
|------------------|---|
| Inv.526<br>2     | 2 - BASEMENT: BASEMENT WINDOW - ENLARGE TWO (2) STANDARD WINDOW TO- 36 X 30               |
| Line 10602       | Note: MAY REQUIRE A WINDOW WELL   |
| 22Feb23 / 2Jan24 |   |
| Inv.526<br>3     | 1 - BASEMENT: BASEMENT WINDOW - EGRESS - ENLARGE STANDARD WINDOW AND MAKE EGRESS- 56 X 30 |
| Line 10603       | Note:   |
| 22Feb23 / 2Jan24 |   |

## 42-2

## MONTAGE

All dimensions of the model are defined in the following table. The model is defined by the following parameters:

| Parameter  | Value |
|------------|-------|
| $\alpha$   | 0.01  |
| $\beta$    | 0.01  |
| $\gamma$   | 0.01  |
| $\delta$   | 0.01  |
| $\epsilon$ | 0.01  |
| $\zeta$    | 0.01  |
| $\eta$     | 0.01  |
| $\theta$   | 0.01  |
| $\iota$    | 0.01  |
| $\kappa$   | 0.01  |
| $\lambda$  | 0.01  |
| $\mu$      | 0.01  |
| $\nu$      | 0.01  |
| $\xi$      | 0.01  |
| $\omicron$ | 0.01  |
| $\pi$      | 0.01  |
| $\rho$     | 0.01  |
| $\sigma$   | 0.01  |
| $\tau$     | 0.01  |
| $\upsilon$ | 0.01  |
| $\phi$     | 0.01  |
| $\chi$     | 0.01  |
| $\psi$     | 0.01  |
| $\omega$   | 0.01  |
| $\kappa$   | 0.01  |
| $\lambda$  | 0.01  |
| $\mu$      | 0.01  |
| $\nu$      | 0.01  |
| $\xi$      | 0.01  |
| $\omicron$ | 0.01  |
| $\pi$      | 0.01  |
| $\rho$     | 0.01  |
| $\sigma$   | 0.01  |
| $\tau$     | 0.01  |
| $\upsilon$ | 0.01  |
| $\phi$     | 0.01  |
| $\chi$     | 0.01  |
| $\psi$     | 0.01  |
| $\omega$   | 0.01  |
| $\kappa$   | 0.01  |
| $\lambda$  | 0.01  |
| $\mu$      | 0.01  |
| $\nu$      | 0.01  |
| $\xi$      | 0.01  |
| $\omicron$ | 0.01  |
| $\pi$      | 0.01  |
| $\rho$     | 0.01  |
| $\sigma$   | 0.01  |
| $\tau$     | 0.01  |
| $\upsilon$ | 0.01  |
| $\phi$     | 0.01  |
| $\chi$     | 0.01  |
| $\psi$     | 0.01  |
| $\omega$   | 0.01  |
| $\kappa$   | 0.01  |
| $\lambda$  | 0.01  |
| $\mu$      | 0.01  |
| $\nu$      | 0.01  |
| $\xi$      | 0.01  |
| $\omicron$ | 0.01  |
| $\pi$      | 0.01  |
| $\rho$     | 0.01  |
| $\sigma$   | 0.01  |
| $\tau$     | 0.01  |
| $\upsilon$ | 0.01  |
| $\phi$     | 0.01  |
| $\chi$     | 0.01  |
| $\psi$     | 0.01  |
| $\omega$   | 0.01  |
| $\kappa$   | 0.01  |
| $\lambda$  | 0.01  |
| $\mu$      | 0.01  |
| $\nu$      | 0.01  |
| $\xi$      | 0.01  |
| $\omicron$ | 0.01  |
| $\pi$      | 0.01  |
| $\rho$     | 0.01  |
| $\sigma$   | 0.01  |
| $\tau$     | 0.01  |
| $\upsilon$ | 0.01  |
| $\phi$     | 0.01  |
| $\chi$     | 0.01  |
| $\psi$     | 0.01  |
| $\omega$   | 0.01  |
| $\kappa$   | 0.01  |
| $\lambda$  | 0.01  |
| $\mu$      | 0.01  |
| $\nu$      | 0.01  |
| $\xi$      | 0.01  |
| $\omicron$ | 0.01  |
| $\pi$      | 0.01  |
| $\rho$     | 0.01  |
| $\sigma$   | 0.01  |
| $\tau$     | 0.01  |
| $\upsilon$ | 0.01  |
| $\phi$     | 0.01  |
| $\chi$     | 0.01  |
| $\psi$     | 0.01  |
| $\omega$   | 0.01  |
| $\kappa$   | 0.01  |
| $\lambda$  | 0.01  |
| $\mu$      | 0.01  |
| $\nu$      | 0.01  |
| $\xi$      | 0.01  |
| $\omicron$ | 0.01  |
| $\pi$      | 0.01  |
| $\rho$     | 0.01  |
| $\sigma$   | 0.01  |
| $\tau$     | 0.01  |
| $\upsilon$ | 0.01  |
| $\phi$     | 0.01  |
| $\chi$     | 0.01  |
| $\psi$     | 0.01  |
| $\omega$   | 0.01  |
| $\kappa$   | 0.01  |
| $\lambda$  | 0.01  |
| $\mu$      | 0.01  |
| $\nu$      | 0.01  |
| $\xi$      | 0.01  |
| $\omicron$ | 0.01  |
| $\pi$      | 0.01  |
| $\rho$     | 0.01  |
| $\sigma$   | 0.01  |
| $\tau$     | 0.01  |
| $\upsilon$ | 0.01  |
| $\phi$     | 0.01  |
| $\chi$     | 0.01  |
| $\psi$     | 0.01  |
| $\omega$   | 0.01  |
| $\kappa$   | 0.01  |
| $\lambda$  | 0.01  |
| $\mu$      | 0.01  |
| $\nu$      | 0.01  |
| $\xi$      | 0.01  |
| $\omicron$ | 0.01  |
| $\pi$      | 0.01  |
| $\rho$     | 0.01  |
| $\sigma$   | 0.01  |
| $\tau$     | 0.01  |
| $\upsilon$ | 0.01  |
| $\phi$     | 0.01  |
| $\chi$     | 0.01  |
| $\psi$     | 0.01  |

**VALERY**  
HOMES

## 42-2



5 BEDROOM



513EDROM



5 BEDROOM



## SECOND FLOOR



## SECOND FILM



8 Extended  
Height Doors  
Highway Only

Feb. 22, 23

## MONTAGE

4. Since users are able to make a 100% withdrawal from their wallets, Dimecoin may eventually be able to do so as well. Speed of service for parts and terms and conditions are also not 100% in the favor of Dimecoin. Many of the other cryptocurrencies are able to offer a 100% withdrawal, and the ability to do so is a major benefit for users.

**HOMES**

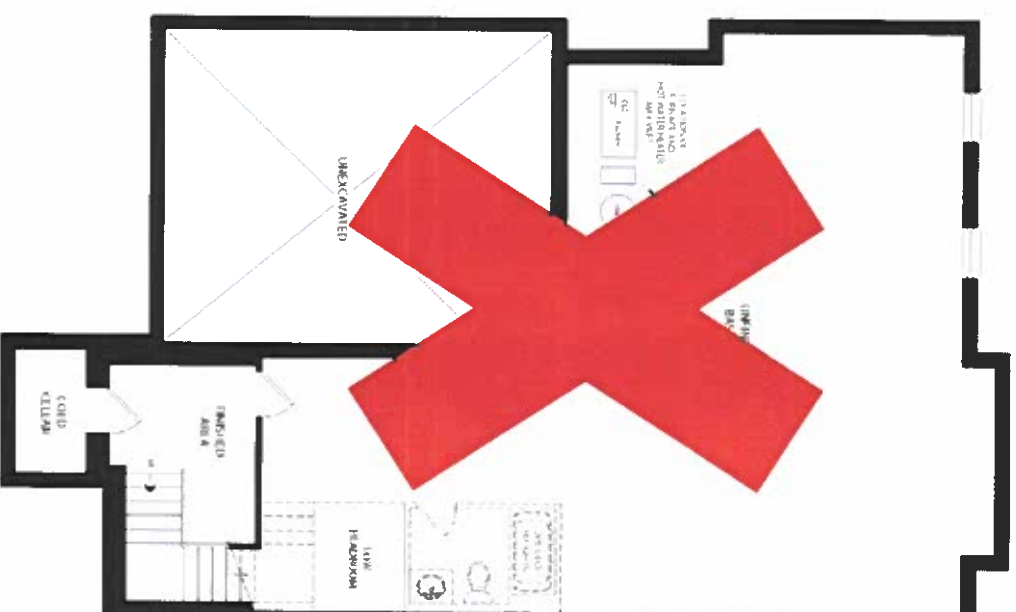


8657

Feb. 22-23



# VALERY



UNFINISHED BASEMENT FLIV A, B &amp; C