

Lot 204-6 Y8 Y9
Mar. 2, 23

KitchenAid® 1000-Watt Low Profile Microwave Hood Combination

YKMLS311HSS

Available Finishes/Colours



This innovative microwave hood combination gives cooks more room to create beneath its low profile cabinet, illuminated by dual LEDs. It delivers powerful ventilation coverage from two powerful 500 CFM Motor Class²¹ fans, capturing cooking smoke, grease and odors. Whisper Quiet® ventilation let's you create without distraction.

Top Features

Low Profile Design

Whisper Quiet® Ventilation System

5-Speed Dual Fan Ventilation

YKMLS311HBL
Other

YKMLS311HSS
Other

YKMLS311HBS
Other

YKMLS311HWH
Other

Dimensions

Depth	18
Height	10 1/4
Width	30

Configuration and Overview

Fan CFM	500
Venting Type	Exterior or Recirculating

Controls

Number of Speeds	4
------------------	---

Ventilation Features

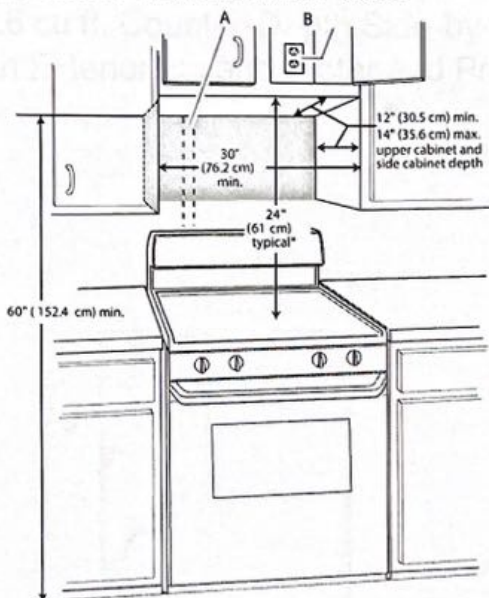
Odor Removal Filter (charcoal)	Charcoal Odor Removing Filter
--------------------------------	-------------------------------

KitchenAid®

Because Whirlpool Corporation policy includes a continuous commitment to improve our products, we reserve the right to change materials and specifications without notice. Dimensions are for planning purposes only. For complete details, see Installation Instructions packed with product. Specifications subject to change without notice.

Installation Dimensions

NOTE: The grounded 3 prong outlet must be inside the upper cabinet. See the "Electrical Requirements" section.

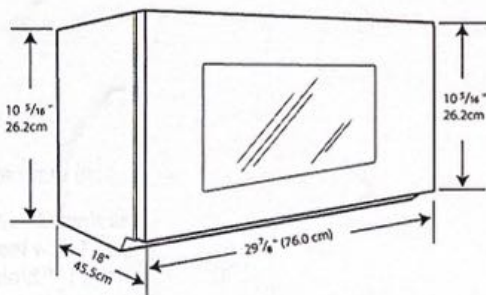


A. 2" x 4" wall stud
B. Grounded 3 prong outlet

*24" (61 cm) is typical for 60" (152.4 cm) installation height. Exact dimensions may vary depending on type of range/cooktop below.

Product Dimensions

*Overall depth of product will vary slightly depending on door design.



Electrical Requirements

⚠ WARNING



Electrical Shock Hazard

- Plug into a grounded 3 prong outlet.
- Do not remove ground prong.
- Do not use an adapter.
- Do not use an extension cord.
- Failure to follow these instructions can result in death, fire, or electrical shock.

Observe all governing codes and ordinances.

Required:

- A 120-volt, 60 Hz, AC-only, 15- or 20-amp electrical supply with a fuse or circuit breaker

Recommended:

- A time-delay fuse or time-delay circuit breaker
- A separate circuit serving only this microwave oven

GROUNDING INSTRUCTIONS

■ For all cord connected appliances:

The microwave oven must be grounded. In the event of an electrical short circuit, grounding reduces the risk of electric shock by providing an escape wire for the electric current. The microwave oven is equipped with a cord having a grounding wire with a grounding plug. The plug must be plugged into an outlet that is properly installed and grounded.

WARNING: Improper use of the grounding plug can result in a risk of electric shock. Consult a qualified electrician or serviceman if the grounding instructions are not completely understood, or if doubt exists as to whether the microwave oven is properly grounded.

Do not use an extension cord. If the power supply cord is too short, have a qualified electrician or serviceman install an outlet near the microwave oven.

SAVE THESE INSTRUCTIONS

KRSC703HPS

22.6 cu ft. Counter-Depth Side-by-Side Refrigerator
with Exterior Ice and Water and PrintShield™ finish

<http://www.kitchenaid.com>



Key Features:

- PrintShield™ Finish
- Counter-depth Design
- Preserva® Food Care System
- In-Door-Ice® System
- LED lighting
- Measured Water Fill
- Clear Door Bins with Metallic Accents
- Exterior and Ice and Water Dispenser

Product Dimensions:

Height: 71 3/8

Width: 35 3/4

Depth: 29 9/16

Additional Information:

[Use And Care Guide](#)

[Dimension Guide](#)

[Installation Guide](#)

[Energy Guide](#)

[Warranty Certificate](#)

Available in:

- Black Stainless
- Steel with Print-
Shield™ Finish
- Stainless Steel with
PrintShield™ Finish



©Registered trademark/TM Trademark of Whirlpool, U.S.A. © 2016 Whirlpool Corporation. All Rights Reserved.
All other trademarks are owned by their respective companies.
Because Whirlpool Corporation policy includes a continuous commitment to improve our products, we reserve
the right to change materials and specifications without notice. We also reserve the right to discontinue or
transition products without notice.
Manufacturer's Suggested Retail Price (MSRP) and Minimum Advertised Price (MAP) provided for reference
purposes only. Dealer alone determines advertised and retail prices.
Created On: Tuesday, December 31, 2019 14:21:18

KDTM404KPS

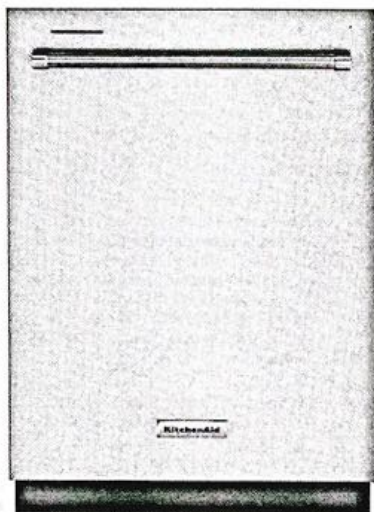
Lot 204-6



KitchenAid®

44 dBA Dishwasher in PrintShield™ Finish with FreeFlex™ Third Rack

<http://www.kitchenaid.com>



Key Features:

- FreeFlex™ Third Rack
- 44 dBA
- Advanced Clean Water Wash System
- ProWash™ Cycle
- PrintShield™ Finish
- Adjustable Middle Rack
- Durable Stainless Steel Interior
- SatinGlide® Rails in Third and Middle Racks
- Adjustable Rows in Middle and Lower Racks
- Two Stemware Holders in Middle Rack
- Express Wash Cycle
- Sani-Rinse Option

Product Dimensions:

Height: 34 1/2

Width: 23 7/8

Depth: 26 3/4

Additional Information:

[Dimension Guide](#)

[Energy Guide](#)

[Warranty Certificate](#)

Available in:

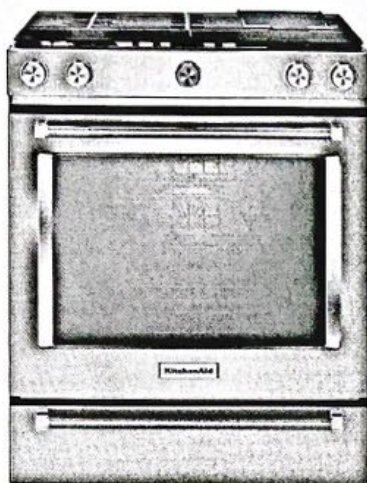
Black Stainless
Steel with Print-
Shield™ Finish
Stainless Steel with
PrintShield™ Finish

INVESTED
IN
AMERICA



®Registered trademark/TM Trademark of Whirlpool, U.S.A. © 2016 Whirlpool Corporation. All Rights Reserved.
All other trademarks are owned by their respective companies.
Because Whirlpool Corporation policy includes a continuous commitment to improve our products, we reserve the right to change materials and specifications without notice. We also reserve the right to discontinue or transition products without notice.
Manufacturer's Suggested Retail Price (MSRP) and Minimum Advertised Price (MAP) provided for reference purposes only. Dealer alone determines advertised and retail prices.
Created On: Thursday, March 26, 2020 14:28:50

Lot 204-6



KitchenAid® 30-Inch 5-Burner Dual Fuel Convection Front Control Range with Baking Drawer

YKSD900ESS

Available Finishes/Colours

YKSD900ESS
Other

Dimensions	
Height	36
Width	29 7/8

Configuration and Overview	
Fuel Type	Dual Fuel
Range Type	Slide-In

Cooktop Features	
Cooktop Element Style	Gas Burner
Cooktop Surface Color	Color Coordinated
Cooktop Surface Material	Stainless Steel
Number of Cooking Element-Burners	5
Center Rear Element-Burner Power	8000 BTU
Center Rear Element-Burner Type	Sealed Burner

Cooktop Features	
Left Front Element-Burner Power	19,000 BTU
Left Front Element-Burner Type	Sealed Burner
Left Rear Element-Burner Power	5000 BTU
Left Rear Element-Burner Type	Sealed Burner
Right Front Element-Burner Power	15,000 BTU
Right Front Element-Burner Type	Sealed Burner
Right Rear Element-Burner Power	9200 BTU

This versatile dual fuel range provides a Baking Drawer that adds more options to the oven. The separate compartment allows you to bake at a different temperature. This range features flawless cooking results from Even-Heat™ True Convection. The unique bow-tie design and convection fan ensure the entire oven is heated to, and stays at, the perfect temperature.

Top Features

Baking drawer

Even-Heat™ True Convection

Steam Rack

Manuals & Literature:

[Use and Care](#) [Installation Instructions](#)

[Warranty](#)

KitchenAid®

Because Whirlpool Corporation policy includes a continuous commitment to improve our products, we reserve the right to change materials and specifications without notice. Dimensions are for planning purposes only. For complete details, see Installation Instructions packed with product. Specifications subject to change without notice.

- The anti-tip bracket must be installed. To install the anti-tip bracket shipped with the range, see "Install Anti-Tip Bracket" section.
- Grounded electrical supply is required. See the appropriate "Electrical Requirements" section.
- Proper gas supply connection must be available. See "Gas Supply Requirements" section.
- Contact a qualified floor covering installer to check that the floor covering can withstand at least 200°F (93°C).
- Use an insulated pad or ¼" (0.64 cm) plywood under range if installing range over carpeting.

IMPORTANT: To avoid damage to your cabinets, check with your builder or cabinet supplier to make sure that the materials used will not discolor, delaminate or sustain other damage. This oven has been designed in accordance with the requirements of UL and CSA International and complies with the maximum allowable wood cabinet temperatures of 194°F (90°C).

Mobile Home - Additional Installation Requirements

The installation of this range must conform to the Manufactured Home Construction and Safety Standard, Title 24 CFR, Part 3280 (formerly the Federal Standard for Mobile Home Construction and Safety, Title 24, HUD Part 280). When such standard is not applicable, use the Standard for Manufactured Home Installations, ANSI A225.1/NFPA 501A or with local codes.

In Canada, the installation of this range must conform with the current standards CAN/CSA-A240-latest edition, or with local codes.

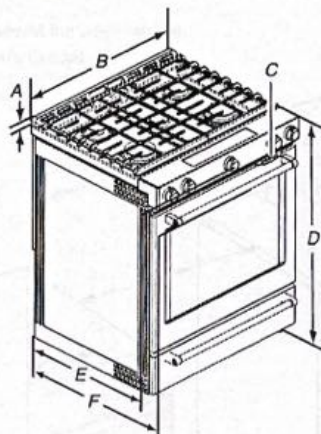
Mobile Home Installations Require:

- When this range is installed in a mobile home, it must be secured to the floor during transit. Any method of securing the range is adequate as long as it conforms to the standards listed above.
- Four-wire power supply cord or cable must be used in a mobile home installation. The appliance wiring will need to be revised. See "Electrical Connection - U.S.A. Only" section.

Product Dimensions

This manual covers several models. Your model may appear different from the models depicted. Dimensions given are maximum dimensions across all models.

Model KSDB900E



- A. 1 3/8" (3.0 cm) height from cooktop to top of vent
- B. 29 7/8" (75.9 cm)
- C. Model/serial/rating plate (located behind the oven door on the top right-hand side of the oven frame)
- D. 36" (91.4 cm) height to top of cooktop edge with leveling legs screwed in all the way*
- E. 28 3/8" (71.9 cm) max. depth from front of console to back of range
- F. 28 1/8" (73.3 cm) max. depth from handle to back of range

IMPORTANT: Range must be level after installation. Follow the instructions in the "Level Range" section. Using the cooktop as a reference for leveling the range is not recommended.

*Range can be raised approximately 1" (2.5 cm) by adjusting the leveling legs.

Cabinet Dimensions

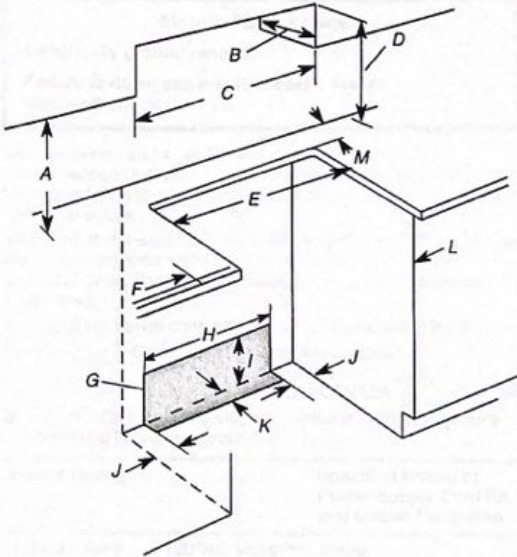
Cabinet opening dimensions shown are for 25" (64.0 cm) countertop depth, 24" (61.0 cm) base cabinet depth and 36" (91.4 cm) countertop height.

IMPORTANT: If installing a range hood or microwave hood combination above the range, follow the range hood or microwave hood combination installation instructions for dimensional clearances above the cooktop surface.

Range may be installed next to combustible walls with zero clearance.

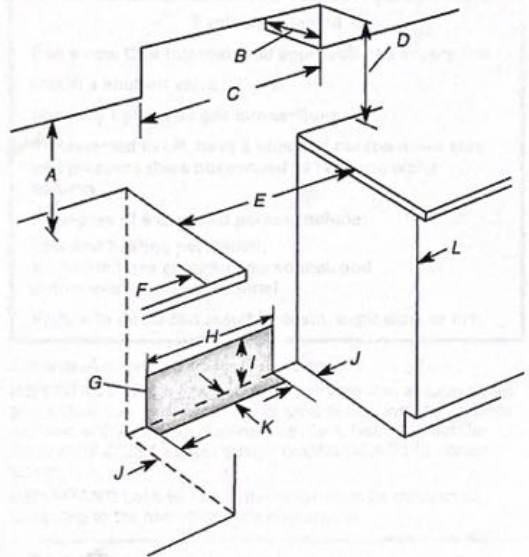
NOTE: When installed in a slide-in cutout, the front of oven door may protrude beyond the base cabinet.

Slide-in Cutout



- A. 18" (45.7 cm) upper side cabinet to countertop
- B. 13" (33 cm) max. upper cabinet depth
- C. 30" (76.2 cm) min. opening width
- D. For minimum clearance to top of cooktop, see NOTE*.
- E. 30" (76.2 cm) min. opening width
- F. 3" (7.6 cm) min. clearance from both sides of range to side wall or other combustible material
- G. The shaded area is recommended for installation of rigid gas pipe and grounded outlet.
- H. 13 1/8" (33.3 cm)
- I. 7 1/8" (19.5 cm)
- J. 4 13/16" (12.2 cm)
- K. 3 1/8" (9.4 cm) plus measurement of M
- L. Cabinet door or hinges should not extend into the cutout.
- M. Remaining counter depth should not exceed 2 1/4" (5.7 cm).

Freestanding Cutout



- A. 18" (45.7 cm) upper side cabinet to countertop
- B. 13" (33 cm) max. upper cabinet depth
- C. 30" (76.2 cm) min. opening width
- D. For minimum clearance to top of cooktop, see NOTE*.
- E. 30" (76.2 cm) min. opening width
- F. 3" (7.6 cm) min. clearance from both sides of range to side wall or other combustible material
- G. The shaded area is recommended for installation of rigid gas pipe and grounded outlet.
- H. 13 1/8" (33.3 cm)
- I. 7 1/8" (19.5 cm)
- J. 4 13/16" (12.2 cm)
- K. 3 1/8" (9.4 cm)
- L. Cabinet door or hinges should not extend into the cutout.

***NOTE:** 24" (61.0 cm) minimum when bottom of wood or metal cabinet is shielded by not less than 1/4" (0.64 cm) flame retardant millboard covered with not less than No. 28 MSG sheet steel, 0.015" (0.4 mm) stainless steel, 0.024" (0.6 mm) aluminum or 0.020" (0.5 mm) copper.

30" (76.2 cm) minimum clearance between the top of the cooking platform and the bottom of an uncovered wood or metal cabinet.

Electrical Requirements - Canada Only

⚠ WARNING



Electrical Shock Hazard

Electrically ground range.

Failure to do so can result in death, fire, or electrical shock.

If codes permit and a separate ground wire is used, it is recommended that a qualified electrical installer determine that the ground path is adequate and wire gauge are in accordance with local codes.

Be sure that the electrical connection and wire size are adequate and in conformance with CSA Standard C22.1, Canadian Electrical Code, Part 1 - latest edition, and all local codes and ordinances.

A copy of the above code standards can be obtained from:

Canadian Standards Association
178 Rexdale Blvd.
Toronto, ON M9W 1R3 CANADA

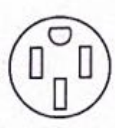
- Check with a qualified electrical installer if you are not sure the range is properly grounded.

Range Rating*		Specified Rating of Power Supply Cord Kit and Circuit Protection
120/240 Volts	120/208 Volts	Amps
8.8 - 16.5 KW	7.8 - 12.5 KW	40 or 50**
16.6 - 22.5 KW	12.6 - 18.5 KW	50

*The NEC calculated load is less than the total connected load listed on the model/serial/rating plate.

**If connecting to a 50-amp circuit, use a 50-amp rated cord with kit. For 50-amp rated cord kits, use kits that specify use with a nominal 1 1/8" (3.5 cm) diameter connection opening.

- A circuit breaker is recommended.
- This range is equipped with a CSA International Certified Power Cord intended to be plugged into a standard 14-50R wall receptacle. Be sure the wall receptacle is within reach of range's final location.



- Do not use an extension cord.
- The tech sheet and wiring diagram are located on the back of the range in a plastic bag.

Gas Supply Requirements

⚠ WARNING



Explosion Hazard

Use a new CSA International approved gas supply line.

Install a shut-off valve.

Securely tighten all gas connections.

If connected to LP, have a qualified person make sure gas pressure does not exceed 14" (36 cm) water column.

Examples of a qualified person include:

licensed heating personnel,
authorized gas company personnel, and
authorized service personnel.

Failure to do so can result in death, explosion, or fire.

Observe all governing codes and ordinances.

IMPORTANT: This installation must conform with all local codes and ordinances. In the absence of local codes, installation must conform with American National Standard, National Fuel Gas Code ANSI Z223.1 - latest edition or CAN/CGA B149 - latest edition.

IMPORTANT: Leak testing of the range must be conducted according to the manufacturer's instructions.

Type of Gas

Natural Gas:

- This range is factory-set for use with Natural gas. See "Gas Conversions" section. The model/serial/rating plate located on the oven frame behind the top right-hand side of the oven door has information on the types of gas that can be used. If the types of gas listed do not include the type of gas available, check with the local gas supplier.

LP Gas Conversion:

Conversion must be done by a qualified service technician.

No attempt shall be made to convert the appliance from the gas specified on the model/serial/rating plate for use with a different gas without consulting the serving gas supplier. See "Gas Conversions" section.

Gas Supply Line

- Provide a gas supply line of 3/4" (1.9 cm) rigid pipe to the range location. A smaller size pipe on longer runs may result in insufficient gas supply. With LP gas, piping or tubing size can be 1/2" (1.3 cm) minimum. Usually, LP gas suppliers determine the size and materials used in the system.

NOTE: Pipe-joint compounds that resist the action of LP gas must be used. Do not use TEFLON† tape.

†TEFLON is a registered trademark of E.I. Du Pont De Nemours and Company.