



CONSTRUCTION SUMMARY

Joshua Creek - 233-2      SHERWOOD (TH-01) B

Registere Plan Number:    Municipal Address:    Closing: 18-Sep-23

BONUS

Inv.479 23 Line 9742  3Nov22 / 29Feb24	1 - BONUS PACKAGE: \$5,000.00 WORTH OF UPGRADES FROM VALERY HOMES DECOR CENTRE IS BEING APPLIED TOWARD THE STRUCTURAL APPOINTMENT.  Note:
--	---

CONSTRUCTION

Inv.479 2 Line 9721  3Nov22 / 29Feb24	1 - COLD CELLAR  Note:
---	------------------------------

ELECTRICAL

Inv.479 16 Line 9735  3Nov22 / 29Feb24	1 - KITCHEN: INSTALL CABINET LIGHTING - UNDERMOUNT T-5 LED VALANCE LIGHT. WOOD VALANCE MUST BE PURCHASED AT THE TIME OF COLOURS  Note:
--	--

Inv.479 19 Line 9738  3Nov22 / 29Feb24	1 - BASEMENT- UNFINISHED AREA: ELECTRICAL - INSTALL DEDICATED 15 AMP 120 V  Note:
--	---

Inv.479 4 Line 9723  3Nov22 / 29Feb24	1 - KITCHEN: INSTALL RECEPTACLES - ADDITIONAL 15 AMP 120 VOLT RECEPTACLE FOR GAS STOVE  Note:
---	---

Inv.479 5 Line 9724  3Nov22 / 29Feb24	4 - KITCHEN: INSTALL FOUR (4) POT LIGHTS - 4" LED NON-INSULATED CEILINGS, ON SEPARATE SWITCH. KEEP STANDARD LIGHTS. LOCATIONS MAY VARY SLIGHTLY DUE TO JOIST LOCATIONS  Note:
---	---

Inv.479 6 Line 9725  3Nov22 / 29Feb24	4 - BREAKFAST AREA: INSTALL FOUR (4) POT LIGHTS - 4" LED NON-INSULATED CEILINGS, ON SEPARATE SWITCH. KEEP STANDARD LIGHTS. LOCATIONS MAY VARY SLIGHTLY DUE TO JOIST LOCATIONS  Note:
---	--

Inv.479 7 Line 9726  3Nov22 / 29Feb24	6 - FAMILY ROOM: INSTALL SIX (6) POT LIGHTS - 4" LED NON-INSULATED CEILINGS, ON SEPARATE SWITCH. KEEP STANDARD LIGHTS. LOCATIONS MAY VARY SLIGHTLY DUE TO JOIST LOCATIONS  Note:
---	--



CONSTRUCTION SUMMARY

Joshua Creek - 233-2      SHERWOOD (TH-01) B

Registere Plan Number:    Municipal Address:    Closing: 18-Sep-23

Inv.479 8	2 - MAIN HALL: INSTALL TWO (2) POT LIGHTS - 4" LED NON-INSULATED CEILINGS, ON SEPARATE SWITCH. KEEP STANDARD LIGHTS. LOCATIONS MAY VARY SLIGHTLY DUE TO JOIST LOCATIONS
Line 9727	Note:
3Nov22 / 29Feb24	
Inv.479 9	4 - FORMAL ROOM: INSTALL FOUR (4) POT LIGHTS - 4" LED NON-INSULATED CEILINGS, ON SEPARATE SWITCH. KEEP STANDARD LIGHTS. LOCATIONS MAY VARY SLIGHTLY DUE TO JOIST LOCATIONS
Line 9728	Note:
3Nov22 / 29Feb24	
Inv.479 10	2 - FOYER: INSTALL TWO (2) POT LIGHTS - 4" LED NON-INSULATED CEILINGS, ON SEPARATE SWITCH. KEEP STANDARD LIGHTS. LOCATIONS MAY VARY SLIGHTLY DUE TO JOIST LOCATIONS
Line 9729	Note:
3Nov22 / 29Feb24	
Inv.479 11	8 - BASEMENT REC ROOM: INSTALL EIGHT (8) POT LIGHTS - 4" LED NON-INSULATED CEILINGS, ON SEPARATE SWITCH. KEEP STANDARD LIGHTS. LOCATIONS MAY VARY SLIGHTLY DUE TO JOIST LOCATIONS
Line 9730	Note:
3Nov22 / 29Feb24	
Inv.479 12	3 - BASEMENT HALL: INSTALL THREE (3) POT LIGHTS - 4" LED NON-INSULATED CEILINGS, ON SEPARATE SWITCH. KEEP STANDARD LIGHTS. LOCATIONS MAY VARY SLIGHTLY DUE TO JOIST LOCATIONS
Line 9731	Note:
3Nov22 / 29Feb24	
Inv.479 13	2 - PRIMARY ENSUITE: INSTALL TWO (2) POT LIGHTS - 4" LED INSULATED CEILINGS, ON SEPARATE SWITCH. KEEP STANDARD LIGHTS. LOCATIONS MAY VARY SLIGHTLY DUE TO JOIST LOCATIONS
Line 9732	Note:
3Nov22 / 29Feb24	
Inv.479 14	1 - KITCHEN: CEILING FIXTURE - RELOCATE STANDARD CEILING FIXTURE ABOVE KISTCHEN ISLAND. LOCATION MAY VARY SLIGHTLY DUE TO JOIST LOCATIONS
Line 9733	Note:
3Nov22 / 29Feb24	

HVAC

Inv.479 15	1 - AIR CONDITIONER AND FLOW - THROUGH HUMIDIFIRE AND MEDIA FILTER -ML14 - 14 SEER - 2.5 TON - WITH FLOW THRU HUMIDIFIER AND 5 INCH MEDIA FILTER
Line 9734	Note:
3Nov22 / 29Feb24	



CONSTRUCTION SUMMARY

Joshua Creek - 233-2      SHERWOOD (TH-01) B

Registere Plan Number:    Municipal Address:    Closing: 18-Sep-23

Inv.479 3	1 - KITCHEN: INSTALL GAS PIPING - GAS LINE R/I FOR MAIN FLOOR -STOVE
Line 9722	Note:
3Nov22 / 29Feb24	

MISCELLANEOUS

Inv.479 24	1 - Purchaser has attended a Structural appointment at the Decor Centre & has DECLINED any additional upgrades and accepts and acknowledges that there will be no further structural changes/additions/deletions to be made upon signing
Line 9743	Note: Purchaser accepts & acknowledges that all upgrades are to be approved by construction before the invoice is accepted
3Nov22 / 29Feb24	

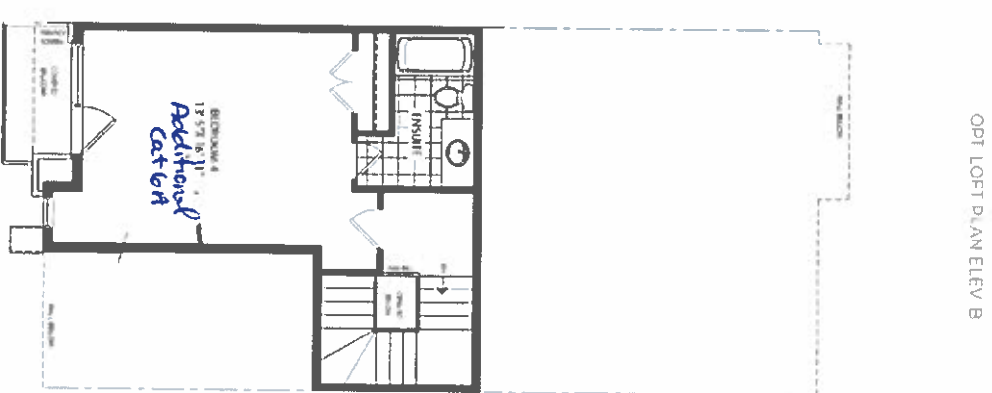
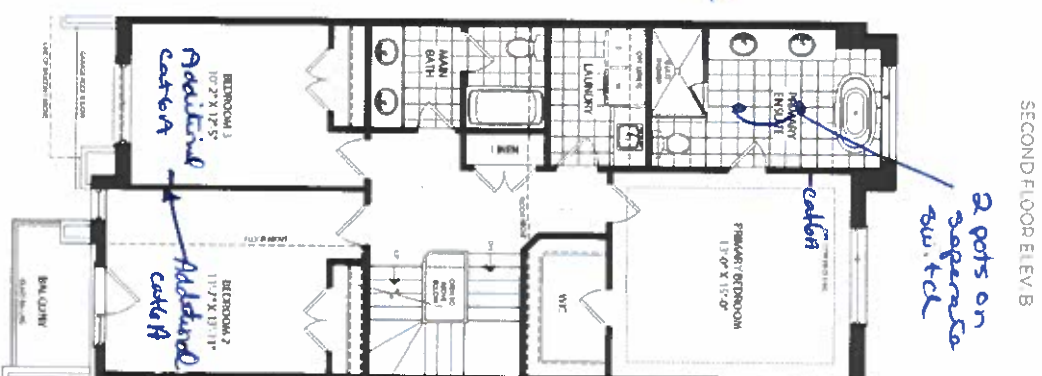
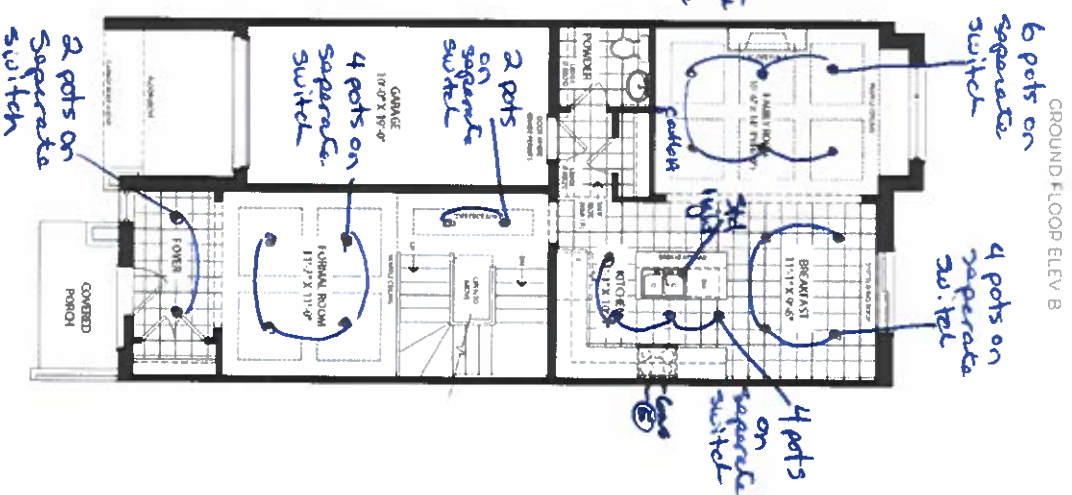
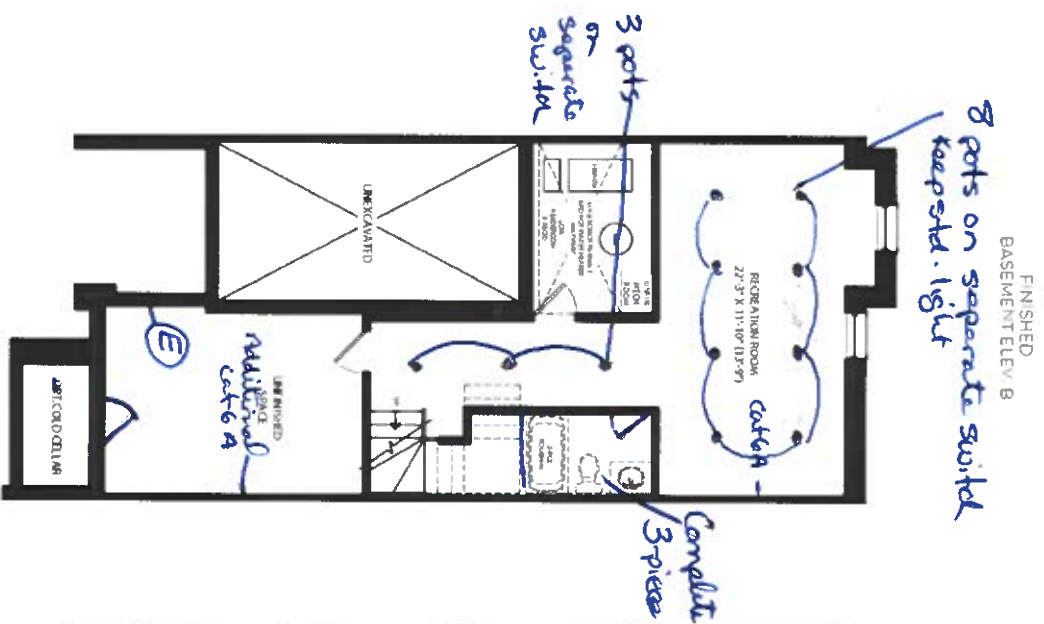
PLUMBING

Inv.479 17	1 - BASEMENT: 3 PIECE BATHROOM - EXTRA 3-PIECE FINISHED BATH, COMPLETE
Line 9736	Note:
3Nov22 / 29Feb24	
Inv.479 18	1 - KITCHEN: EXTRA ROUGH-IN LINE FOR FRIDGE ICE MAKER WITH SHUT-OFF
Line 9737	Note:
3Nov22 / 29Feb24	

VACCUM/BELL

Inv.479 20	1 - BEDROOM 4 - BASEMENT UNFINISHED AREA - BEDROOM 2 & 3: INSTALL 10G NETWORK PACKAGE - 4 CAT6A NETWORK CABLES FOR IPTVS - TERMINATED. LOCATIONS MAY VARY SLIGHTLY DUE TO JOIST LOCATIONS
Line 9739	Note:
3Nov22 / 29Feb24	
Inv.479 21	1 - ALARM ROUGH IN - KEYPAD (X2), SIREN (X1), MOTIONS (X2), DOOR CONTACTS (3). ROUGHED BACK TO HYDRO PANEL
Line 9740	Note:
3Nov22 / 29Feb24	
Inv.479 22	1 - ATTIC: INSTALL 1 1/4" ORANGE FLEX CONDUIT FROM ATTIC TO HYDRO PANEL
Line 9741	Note:
3Nov22 / 29Feb24	
Inv.479 1	1 - LOCATION SKETCH FOR CAT 6A. LOCATIONS MAY VARY SLIGHTLY DUE TO JOIST LOCATIONS
Line 9719	Note:
3Nov22 / 29Feb24	

TH-1  
SHERWOOD  
ELEV B 2.903 SQ.FT



2337

40

3, 2022

## SCHEDULE "H"

**JOSHUA CREEK**  
**MONTAGE**

All respondents' answers were estimated and subjected to normal distribution or variance. Differences may exceed the middle floor area. Sites, configurations, floor plans and limits and conditions are subject to change without notice. Owners may stop official features which may not be included. The basic floor plans may be revised. Following and for details on the above, contact: [Sales@homedepot.com](mailto:Sales@homedepot.com) for further details. All trademarks and/or services: © 2014. All rights reserved. [www.homedepot.com](http://www.homedepot.com)

# VALERY