



CONSTRUCTION SUMMARY

Joshua Creek - 234-6 SHERWOOD (TH-01) A END

Registere Plan Number: Municipal Address: Closing: 13-Sep-23

MISCELLANEOUS

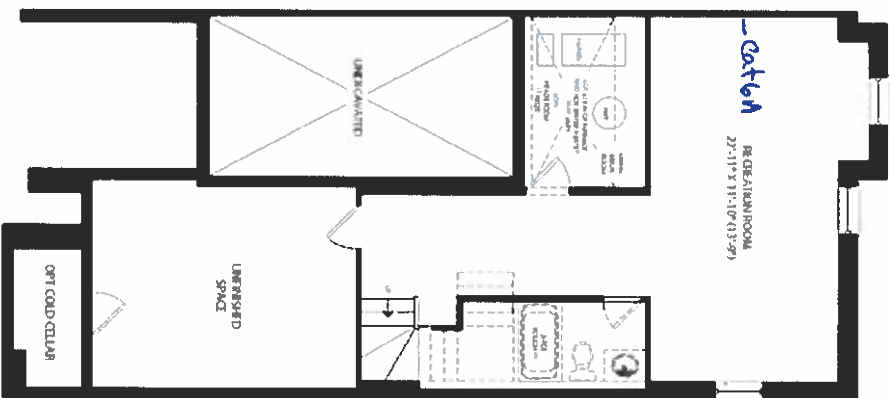
Inv.469 3	1 - Purchaser has attended a Structural appointment at the Decor Centre & has DECLINED any additional upgrades and accepts and acknowledges that there will be no further structural changes/additions/deletions to be made upon signing
Line 9563	Note:
18Oct22 / 19Oct22	

VACCUM/BELL

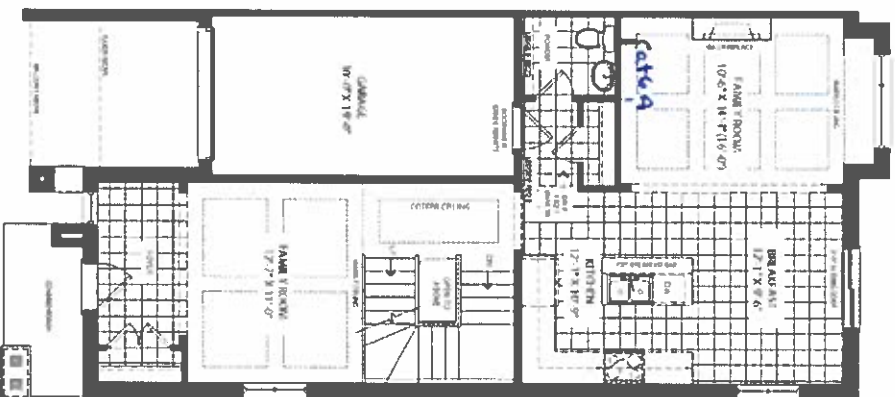
Inv.469 1	1 - CAT 6A LOCATION SKETCH. LOCATIONS MAY VARY SLIGHTLY DUE TO JOIST LOCATIONS
Line 9561	Note:
18Oct22 / 19Oct22	
Inv.469 2	1 - CENTRAL VACUUM - CENTRAL VAC PIPING COMPLETE ROUGH-IN TO GARAGE - TWO OUTLETS PER FLOOR AND ONE OUTLET IN BASEMENT R/I ONLY
Line 9562	Note:
18Oct22 / 19Oct22	

TH-1
SHERWOOD
ELEV A END 3,107 SQ.FT.

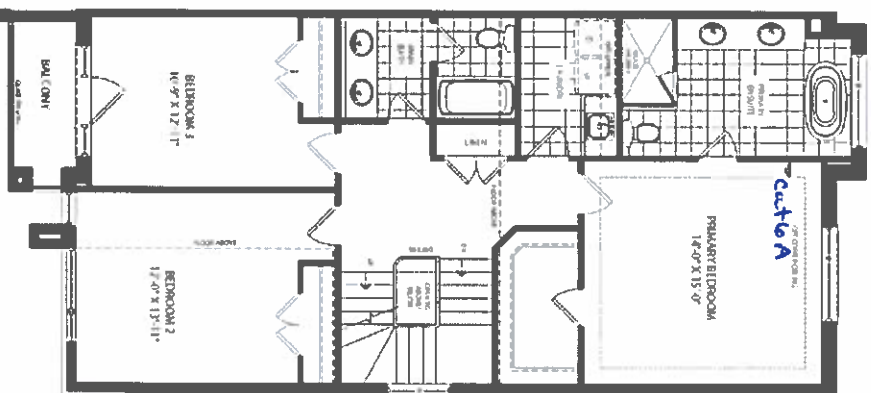
FINISHED BASEMENT ELEV A
END CONDITION



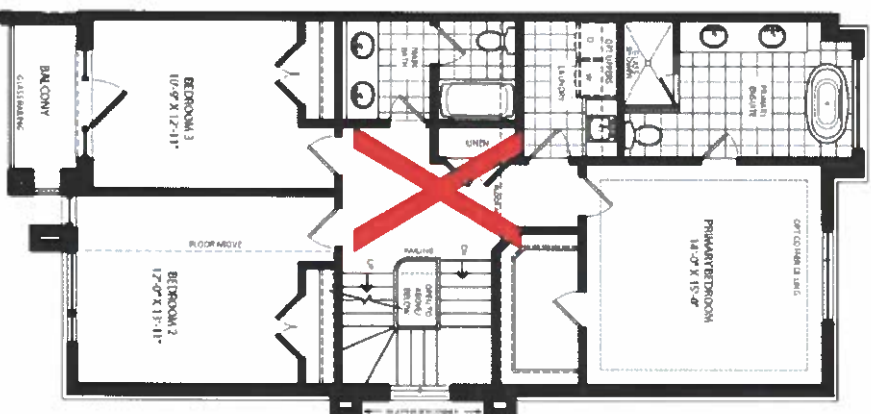
GROUND FLOOR ELEV A
END CONDITION



SECOND FLOOR ELEV A
END CONDITION



SECOND FLOOR ELEV A
END CONDITION CORNER UPGRADE



LOFT PLAN ELEV A
END CONDITION



OPT LOFT PLAN ELEV A
END CONDITION



Lot 234-6
Unit 18, 22.
SCHEDULE "H"

JOSHUA CREEK
MONTAGE

All dimensions are approximate and subject to normal construction variations. Dimensions may exceed the usable floor area. See, speed, color, floor plan and terms and conditions are subject to change without notice. Drawings may show optional features which may not be included in the base price. Plans may be revised. Elevation and location variations may apply. Contact a sales advisor for further details. All drawings are artist's concepts. E & OE. All rights reserved. Valley Homes.

VALLEY
HOMES