



CONSTRUCTION SUMMARY

Joshua Creek - 232-3 · EDGEMERE (TH-03) A END

Registere Plan Number: Municipal Address: Closing: 29-Sep-23

CEILING

Inv.478 6	1 - SECOND FLOOR: SMOOTH CEILING, SECOND FLOOR
Line 9708	Note:
3Nov22 / 3Nov22	
Inv.478 7	1 - LOFT: SMOOTH CEILING, LOFT AREA
Line 9709	Note:
3Nov22 / 3Nov22	

ELECTRICAL

Inv.478 8	1 - KITCHEN: CEILING FIXTURE - RELOCATE STANDARD CEILING FIXTURE. TO GO ABOVE ISLAND. LOCATION MAY VARY SLIGHTLY DUE TO JOIST LOCATIONS
Line 9710	Note:
3Nov22 / 3Nov22	
Inv.478 9	1 - KITCHEN: INSTALL ONE (1) POT LIGHT - 4" LED NON-INSULATED CEILINGS, ON SEPARATE SWITCH. LOCATION MAY VARY SLIGHTLY DUE TO JOIST LOCATIONS
Line 9711	Note:
3Nov22 / 3Nov22	
Inv.478 10	1 - FAMILY ROOM: INSTALL ONE (1) POT LIGHT - 4" LED NON-INSULATED CEILINGS, ON SEPARATE SWITCH. LOCATION MAY VARY SLIGHTLY DUE TO JOIST LOCATIONS
Line 9712	Note:
3Nov22 / 3Nov22	
Inv.478 11	1 - BREAKFAST AREA: INSTALL ONE (1) POT LIGHT - 4" LED NON-INSULATED CEILINGS, ON SEPARATE SWITCH. LOCATION MAY VARY SLIGHTLY DUE TO JOIST LOCATIONS
Line 9713	Note:
3Nov22 / 3Nov22	
Inv.478 12	1 - FORMAL ROOM: INSTALL ONE (1) POT LIGHT - 4" LED NON-INSULATED CEILINGS, ON SEPARATE SWITCH. LOCATION MAY VARY SLIGHTLY DUE TO JOIST LOCATIONS
Line 9714	Note:
3Nov22 / 3Nov22	
Inv.478 13	1 - ELECTRICAL - ROUGH-IN FOR AC UNIT. INCLUDES BREAKER & LOW VOLTAGE WIRE
Line 9715	Note:
3Nov22 / 3Nov22	
Inv.478 3	1 - KITCHEN: INSTALL RECEPTACLES - ADDITIONAL 15 AMP 120 VOLT RECEPTACLE FOR GAS STOVE
Line 9705	Note:
3Nov22 / 3Nov22	



CONSTRUCTION SUMMARY

Joshua Creek - 232-3 EDGEMERE (TH-03) A END

Registere Plan Number: Municipal Address: Closing: 29-Sep-23

Inv.478 4	1 - KITCHEN: INSTALL ELECTRICAL - ROUGH-IN FOR 15 AMP BUILT-IN MICROWAVE IN ISLAND
Line 9706	Note:
3Nov22 / 3Nov22	

Inv.478 5	1 - FAMILY ROOM: INSTALL ELECTRICAL - ROUGH-IN FOR 15 AMP ABOVE FIREPLACE FOR FUTURE TV
Line 9707	Note:
3Nov22 / 3Nov22	

HVAC

Inv.478 2	1 - KITCHEN: GAS PIPING AND OTHER - GAS LINE R/I FOR MAIN FLOOR - STOVE
Line 9703	Note:
3Nov22 / 3Nov22	

MISCELLANEOUS

Inv.478 16	1 - Purchaser has attended a Structural appointment at the Decor Centre & has DECLINED any additional upgrades and accepts and acknowledges that there will be no further structural changes/additions/deletions to be made upon signing
Line 9718	Note: Purchaser accepts & acknowledges that all upgrades are to be approved by construction before the invoice is accepted.
3Nov22 / 3Nov22	

PLUMBING

Inv.478 14	1 - KITCHEN: INSTALL EXTRA ROUGH-IN LINE FOR FRIDGE ICE MAKER WITH SHUT-OFF
Line 9716	Note:
3Nov22 / 3Nov22	
Inv.478 15	1 - BACKFLOW PREVENTER VALVE
Line 9717	Note:
3Nov22 / 3Nov22	

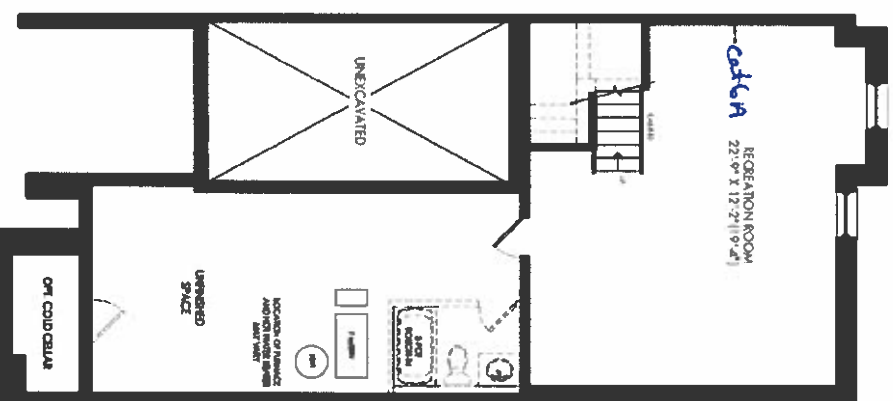
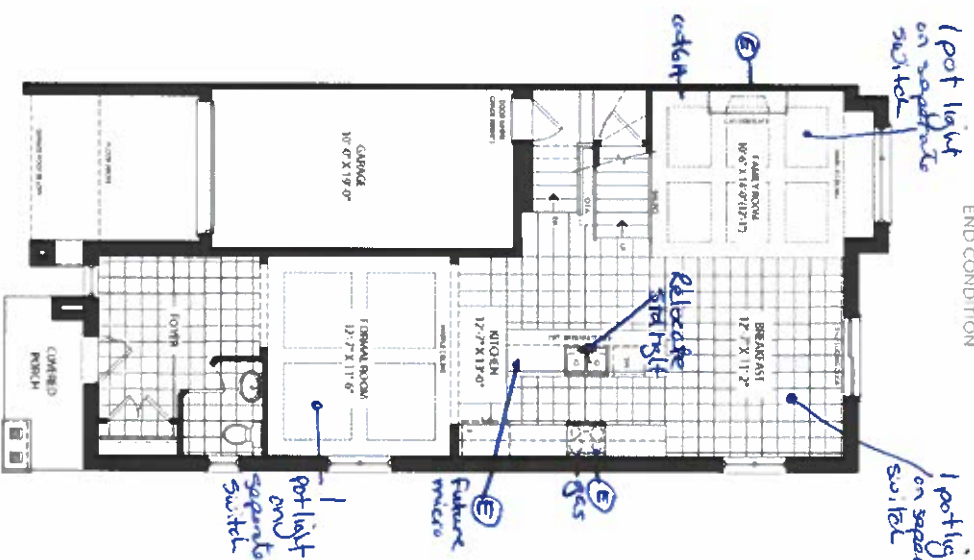
VACCUM/BELL

Inv.478 1	1 - CAT 6A LOCATION SKETCH. LOCATIONS MAY VARY SLIGHTLY DUE TO JOIST LOCATIONS
Line 9702	Note:
3Nov22 / 3Nov22	

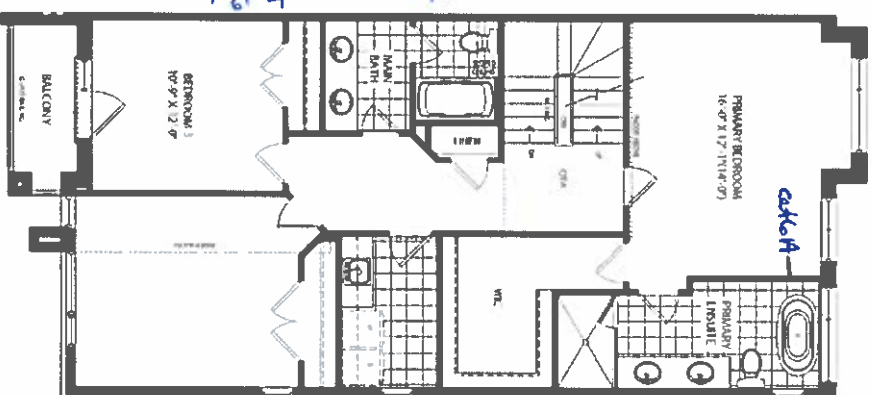
TH-3
EDGE-MERE
ELEV. A END 3,107 SQ. FT.

ELEV.A END 3.107 SQ.FT.

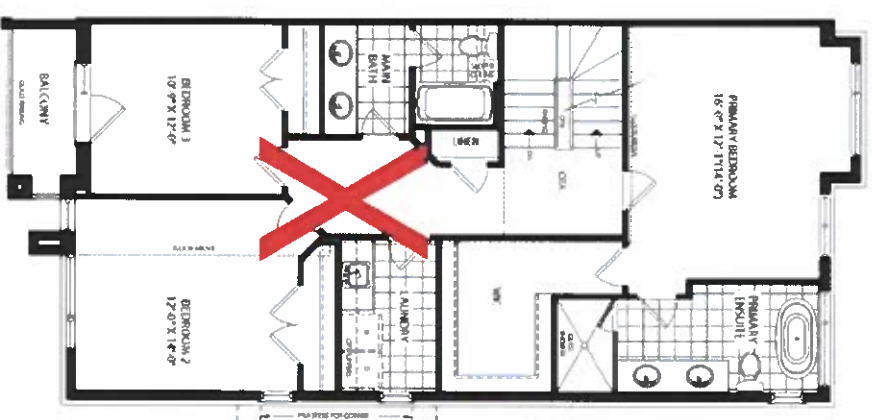
FINISHED BASEMENT ELEV A
END CONDITION

GROUND FLOOR ELEV A
END CONDITION

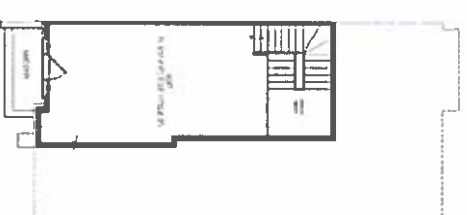
SECOND FLOOR ELEV A
END CONDITION



SECOND FLOOR ELEV A
END CONDITION CORNER UPGRADE



LOFT PLAN ELEV A
END CONDITION



OPT. LOFT PLAN ELEV. A
END CONDITION



JOSHUA CREEK
MONTAGE

All dimensions are approximate and subject to normal construction variances. Dimensions may exceed the usable floor area. Stairs, speed elevators, floor plans and terms and conditions are subject to change without notice. Drawings also show optional features which may not be included in the base price. Plans may be revised. Entry and trade-in valuations may apply. Contact a sales advisor for further details. A refunders are artists' concepts. E.O. 9. All rights reserved. © 2004 Hyundai.

232-3
JH
GT
JAN. 3, 22
SCHEDULE "H"

VALERY HOMES