



CONSTRUCTION SUMMARY

Joshua Creek - 233-1 SHERWOOD (TH-01) B END

Registere Plan Number: Municipal Address: Closing: 18-Sep-23

CEILING

Inv.540 20	1 - SECOND FLOOR: SMOOTH CEILING THROUGHOUT SECOND FLOOR
Line 10875	Note:
21Apr23 / 5Mar24	

CONSTRUCTION

Inv.540 19	1 - SIDE HALL - CLOSET: REMOVE DOOR, SHELF AND FRONT WALLS OF CLOSET TO MAKE AN OPEN SPACE.
Line 10872	Note: Price as per Anthony
21Apr23 / 5Mar24	

Inv.540 2	1 - FOYER: EXTEND WALL THAT SEPARATES THE FOYER TO THE FORMAL ROOM BY APPROX. 3 FEET. SEE SKETCH
Line 10853	Note: Price as per Anthony
21Apr23 / 5Mar24	

ELECTRICAL

Inv.540 3	2 - KITCHEN: APPLIANCE - RELOCATE STANDARD APPLIANCE
SWITCH THE DISHWASHER AND THE SINK SO THAT THE SINK IS FARTHER AWAY FROM THE FRIDGE. SEE SKETCH	
Line 10854	Note:
21Apr23 / 5Mar24	

Inv.540 4	1 - KITCHEN: INSTALL ONE (1) POT LIGHTS - 4" LED NON-INSULATED CEILINGS, ON SEPARATE SWITCH
Line 10855	Note: Location may vary slightly due to joist location
21Apr23 / 5Mar24	

Inv.540 5	1 - FAMILY ROOM: INSTALL ONE (1) POT LIGHTS - 4" LED NON-INSULATED CEILINGS, ON SEPARATE SWITCH. DELETE STANDARD LIGHT
Line 10856	Note: Location may vary slightly due to joist location
21Apr23 / 5Mar24	

Inv.540 6	1 - SIDE HALL (BY POWDER RM): CEILING FIXTURE - RELOCATE STANDARD CEILING FIXTURE. IT WON'T BE CENTERED. SEE SKETCH
Line 10857	Note: Location may vary slightly due to joist location
21Apr23 / 5Mar24	

Inv.540 7	1 - FORMAL ROOM: INSTALL ONE (1) POT LIGHTS - 4" LED NON-INSULATED CEILINGS, ON SEPARATE SWITCH. KEEP STANDARD LIGHT
Line 10859	Note: Location may vary slightly due to joist location
21Apr23 / 5Mar24	



CONSTRUCTION SUMMARY

Joshua Creek - 233-1 · SHERWOOD (TH-01) B END

Registere Plan Number: Municipal Address: Closing: 18-Sep-23

Inv.540 8	1 - FOYER: CEILING FIXTURE - RELOCATE STANDARD CEILING FIXTURE. IT WON'T BE CENTERED. SEE SKETCH
Line 10860	Note: Location may vary slightly due to joist location
21Apr23 / 5Mar24	
Inv.540 9	2 - BASEMENT- REC ROOM: CEILING FIXTURE - RELOCATE STANDARD CEILING FIXTURES. THEY WON'T BE CENTERED. SEE SKETCH
Line 10861	Note: Location may vary slightly due to joist location
21Apr23 / 5Mar24	
Inv.540 10	1 - PRIMARY BEDROOM: INSTALL ONE (1) POT LIGHTS - 4" LED - INSULATED CEILINGS, ON SEPARATE SWITCH. KEEP STANDARD LIGHTS
Line 10862	Note: Location may vary slightly due to joist location
21Apr23 / 5Mar24	
Inv.540 11	1 - PRIMARY ENSUITE: INSTALL ONE (1) POT LIGHTS - 4" LED - INSULATED CEILINGS, ON SEPARATE SWITCH. KEEP STANDARD LIGHTS
Line 10863	Note: Location may vary slightly due to joist location
21Apr23 / 5Mar24	
Inv.540 12	1 - LAUNDRY ROOM: CEILING FIXTURE - RELOCATE STANDARD CEILING FIXTURE. IT WON'T BE CENTERED. SEE SKETCH
Line 10864	Note: Location may vary slightly due to joist location
21Apr23 / 5Mar24	
Inv.540 13	1 - UPPER HALL: CEILING FIXTURE - RELOCATE STANDARD CEILING FIXTURE. IT WON'T BE CENTERED. SEE SKETCH
Line 10865	Note: Location may vary slightly due to joist location
21Apr23 / 5Mar24	
Inv.540 14	1 - BEDROOM 2: INSTALL ONE (1) POT LIGHTS - 4" LED - INSULATED CEILINGS, ON SEPARATE SWITCH. KEEP STANDARD LIGHTS
Line 10866	Note: Location may vary slightly due to joist location
21Apr23 / 5Mar24	
Inv.540 15	1 - BEDROOM 3: INSTALL ONE (1) POT LIGHTS - 4" LED - INSULATED CEILINGS, ON SEPARATE SWITCH. KEEP STANDARD LIGHTS
Line 10867	Note: Location may vary slightly due to joist location
21Apr23 / 5Mar24	
Inv.540 16	1 - LOFT: INSTALL ONE (1) POT LIGHTS - 4" LED - INSULATED CEILINGS, ON SEPARATE SWITCH. KEEP STANDARD LIGHTS
Line 10868	Note: Location may vary slightly due to joist location
21Apr23 / 5Mar24	



CONSTRUCTION SUMMARY

Joshua Creek - 233-1 SHERWOOD (TH-01) B END

Registere Plan Number: Municipal Address: Closing: 18-Sep-23

Inv.540 17 Line 10869 21Apr23 / 5Mar24	1 - KITCHEN: CEILING FIXTURE - RELOCATE STANDARD CEILING FIXTURE, ABOVE ISLAND Note: Location may vary slightly due to joist location
-------------------------------------------------	------------------------------------------------------------------------------------------------------------------------------------------

Inv.540 18 Line 10870 21Apr23 / 5Mar24	1 - BREAKFAST AREA: CEILING FIXTURE - RELOCATE STANDARD CEILING FIXTURE, THREE FEET FROM CENTRE, IN LINE WITH THE EDGE OF THE PATIO DOOR. SEE SKETCH Note: Location may vary slightly due to joist location
-------------------------------------------------	----------------------------------------------------------------------------------------------------------------------------------------------------------------------------------------------------------------

Inv.540 27 Line 10985 21Apr23 / 5Mar24	1 - FAMILY ROOM: ELECTRICAL - DEDICATED 15 AMP 120 V FOR FUTURE TV ABOVE FIREPLACE Note:
-------------------------------------------------	---------------------------------------------------------------------------------------------

MISCELLANEOUS

Inv.540 29 Line 10987 21Apr23 / 5Mar24	1 - Purchaser has attended a Structural appointment at the Decor Centre & has DECLINED any additional upgrades and accepts and acknowledges that there will be no further structural changes/additions/deletions to be made upon signing Note: Purchasers are aware & accept that ANY changes made to upgrades after signing this Purchasers Extra Form are subject to an administration fee Purchaser accepts & acknowledges that all upgrades are to be approved by construction before the invoice is accepted
-------------------------------------------------	-----------------------------------------------------------------------------------------------------------------------------------------------------------------------------------------------------------------------------------------------------------------------------------------------------------------------------------------------------------------------------------------------------------------------------------------------------------------------------------------------------------------------------

PLUMBING

Inv.540 26 Line 10883 21Apr23 / 5Mar24	1 - FRIDGE: EXTRA ROUGH-IN LINE FOR FRIDGE ICE MAKER WITH SHUT-OFF Note:
-------------------------------------------------	-----------------------------------------------------------------------------

Inv.540 21 Line 10876 21Apr23 / 5Mar24	1 - MAIN BATH: CONVERT TUB TO SHOWER, INCLUDES 1 SIDE OF FRAMELESS GLASS, CHROME Note:
-------------------------------------------------	-------------------------------------------------------------------------------------------

Inv.540 22 Line 10877 21Apr23 / 5Mar24	1 - INSTALL PLUMBING FOR RAIN SHOWERHEAD FROM CEILING, MUST PURCHASE SHOWERHEAD. IN LIEU OF STANDARD SHOWERHEAD ON WALL Note:
-------------------------------------------------	----------------------------------------------------------------------------------------------------------------------------------

Inv.540 23 Line 10878 21Apr23 / 5Mar24	1 - PRIMARY ENSUITE: INSTALL RAIN SHOWERHEAD MOEN 12" RAINSHOWER WITH IMMERSION #S1004 Note:
-------------------------------------------------	--------------------------------------------------------------------------------------------------------



CONSTRUCTION SUMMARY

Joshua Creek - 233-1 SHERWOOD (TH-01) B END

Registere Plan Number: Municipal Address: Closing: 18-Sep-23

Inv.540 24	1 - PRIMARY ENSUITE: INSTALL SHOWER ARM FOR RAIN SHOWERHEAD
Line 10879	MOEN 6" STRAIGHT SHOWER ARM #116651
	Note:
21Apr23 / 5Mar24	

VACCUM/BELL

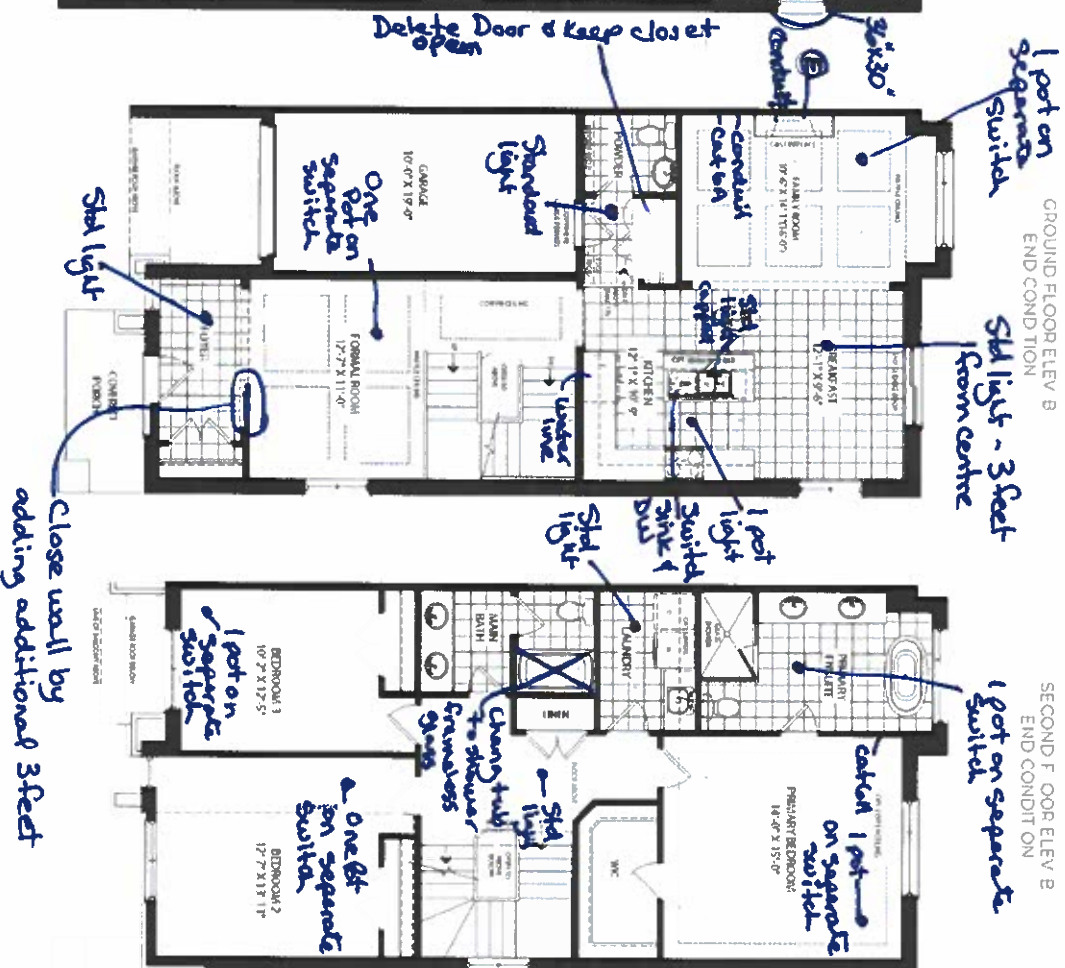
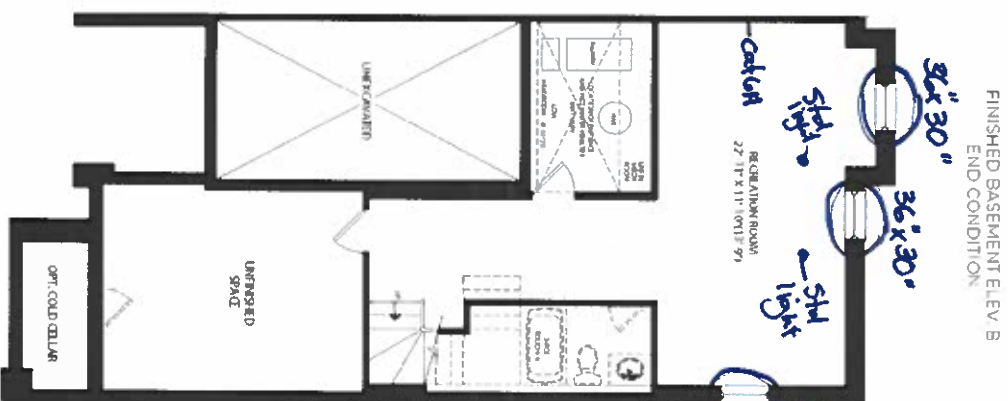
Inv.540 28	1 - FAMILY ROOM: INSTALL 1 1/4" ORANGE FLEX CONDUIT FOR FUTURE TV ABOVE FIREPLACE
Line 10986	Note: LOCATIONS MAY VARY SLIGHTLY DUE TO JOIST LOCATIONS
21Apr23 / 5Mar24	

Inv.540 1	1 - CAT 6A LOCATION SKETCH. LOCATIONS MAY VARY SLIGHTLY DUE TO JOIST LOCATIONS (STD)
Line 10852	Note:
21Apr23 / 5Mar24	

WINDOWS

Inv.540 25	3 - BASEMENT: BASEMENT WINDOW - ENLARGE THREE (3) STANDARD WINDOW TO- 36 X 30
Line 10881	Note: MAY REQUIRE A WINDOW WELL
21Apr23 / 5Mar24	

TH-1
SHERWOOD
ELEV.B END 3,099 SQ.FT.



JOSHUA CREEK
MONTAGE

All dimensions are approximate and subject to normal construction variance. Dimensions may exceed the visible floor area shown. Modifications, room additions, and conditions are subject to the architect's approval. All dimensions are subject to the architect's approval. All dimensions are subject to the architect's approval.

VALERY
HOMES

Not 233-1
OK 2, 23
SCHEDULE "H"