



CONSTRUCTION SUMMARY

Joshua Creek - 236-5 ARBOURVIEW (TH-02) A

Registere Plan Number: Municipal Address: Closing: 23-Aug-23

BONUS

Inv. 421 20 Line 8553 6Jul22 / 27Oct22	1 - BONUS PACKAGE: \$5,000.00 WORTH OF UPGRADES FROM VALERY HOMES DECOR CENTRE IS BEING APPLIED TOWARD THE STRUCTURAL APPOINTMENT. Note:
-----------------------------------------------------	-------------------------------------------------------------------------------------------------------------------------------------------------

CEILING

Inv. 421 3 Line 8533 6Jul22 / 27Oct22	1 - BASEMENT: INSTALL SMOOTH CEILING, MAIN FLOOR, SECOND FLOOR OR BASEMENT Note:
----------------------------------------------------	-----------------------------------------------------------------------------------------

ELECTRICAL

Inv. 421 4 Line 8534 6Jul22 / 27Oct22	1 - GARAGE: INSTALL RECEPTACLES - EV STATION DEDICATED 240 VOLT RECEPTACLE Note:
Inv. 421 5 Line 8535 6Jul22 / 27Oct22	1 - KITCHEN: MOVE CEILING FIXTURE - RELOCATE STANDARD CEILING FIXTURE. TO GO ABOVE KITCHEN ISLAND. LOCATION MAY VARY SLIGHTLY DUE TO JOIST LOCATIONS Note:
Inv. 421 8 Line 8538 6Jul22 / 27Oct22	1 - KITCHEN: INSTALL RECEPTACLES - ADDITIONAL 15 AMP 120 VOLT RECEPTACLE FOR GAS STOVE Note:
Inv. 421 14 Line 8544 6Jul22 / 27Oct22	1 - KITCHEN: INSTALL ELECTRICAL - 110V ABOVE STOVE FOR FUTURE MICROWAVE Note:
Inv. 421 16 Line 8547 6Jul22 / 27Oct22	1 - FAMILY ROOM: INSTALL ELECTRICAL - ROUGH-IN FOR DEDICATED 15 AMP 120 V ABOVE FIREPLACE FOR TV Note:
Inv. 421 18 Line 8549 6Jul22 / 27Oct22	1 - BASEMENT UNFINISHED AREA: INSTALL ELECTRICAL - ROUGH-IN FOR 15 AMP RECEPTICAL. SEE SKETCH. LOCATION MAY VARY SLIGHTLY Note:

GARAGE DOORS



CONSTRUCTION SUMMARY

Joshua Creek - 236-5 ARBOURVIEW (TH-02) A

Registere Plan Number: Municipal Address: Closing: 23-Aug-23

Inv.421 13 Line 8543 6Jul22 / 27Oct22	1 - GARAGE: INSTALL OVERHEAD GARAGE DOOR - LIFTMASTER 8355W - 1/2 HP BELT - INCLUDES 2 REMOTES & 1 KEYPAD - 8 FT Note:
----------------------------------------------------	-------------------------------------------------------------------------------------------------------------------------------

HVAC

Inv.421 19 Line 8551 6Jul22 / 27Oct22	1 - LAUNDRY ROOM: INSTALL GAS PIPING AND OTHER - GAS LINE R/I FOR - DRYER Note:
----------------------------------------------------	----------------------------------------------------------------------------------------

Inv.421 1 Line 8531 6Jul22 / 27Oct22	1 - CAT 6A LOCATION SKETCH. LOCATIONS MAY VARY SLIGHTLY DUE TO JOIST LOCATIONS Note:
---------------------------------------------------	---------------------------------------------------------------------------------------------

Inv.421 6 Line 8536 6Jul22 / 27Oct22	1 - AIR CONDITIONER AND FLOW - THROUGH HUMIDIFIRE AND MEDIA FILTER - ACX16 - 16 SEER - 3 TON - WITH FLOW THRU HUMIDIFIER AND 5 INCH MEDIA FILTER Note:
---------------------------------------------------	---------------------------------------------------------------------------------------------------------------------------------------------------------------

Inv.421 7 Line 8537 6Jul22 / 27Oct22	1 - KITCHEN: GAS PIPING AND OTHER - GAS LINE R/I FOR MAIN FLOOR - STOVE - Note:
---------------------------------------------------	----------------------------------------------------------------------------------------

MISCELLANEOUS

Inv.422 23 Line 8556 6Jul22 / 27Oct22	1 - Purchaser has attended a Structural appointment at the Decor Centre & has DECLINED any additional upgrades and accepts and acknowledges that there will be no further structural changes/additions/deletions to be made upon signing Note:
----------------------------------------------------	-------------------------------------------------------------------------------------------------------------------------------------------------------------------------------------------------------------------------------------------------------

Inv.421 21 Line 8554 6Jul22 / 27Oct22	1 - Purchaser has attended a Structural appointment at the Decor Centre & has DECLINED any additional upgrades and accepts and acknowledges that there will be no further structural changes/additions/deletions to be made upon signing Note:
----------------------------------------------------	-------------------------------------------------------------------------------------------------------------------------------------------------------------------------------------------------------------------------------------------------------

PLUMBING

Inv.422 22 Line 8555 6Jul22 / 27Oct22	1 - PRIMARY ENSUITE: REPLACE STANDARD TUB WITH A JET TUB. DESIGN TO BE ATTACHED Note:
----------------------------------------------------	----------------------------------------------------------------------------------------------



CONSTRUCTION SUMMARY

Joshua Creek - 236-5 ARBOURVIEW (TH-02) A

Registere Plan Number: Municipal Address: Closing: 23-Aug-23

Inv.421 9	1 - BASEMENT: 3 PIECE BATHROOM - EXTRA 3-PIECE FINISHED BATH, COMPLETE
Line 8539	Note:
6Jul22 / 27Oct22	
Inv.421 10	1 - LOFT: CONVERT TUB TO SHOWER, INCLUDES 1 SIDE OF FRAMELESS GLASS, CHROME
Line 8540	Note:
6Jul22 / 27Oct22	
Inv.421 11	1 - KITCHEN: INSTALL EXTRA ROUGH-IN LINE FOR FRIDGE ICE MAKER WITH SHUT-OFF
Line 8541	Note:
6Jul22 / 27Oct22	
Inv.421 12	1 - BACKFLOW PREVENTER VALVE
Line 8542	Note:
6Jul22 / 27Oct22	

VACCUM/BELL

Inv.421 15	1 - FAMILY ROOM: INSTALL 1 1/4" ORANGE FLEX CONDUIT ABOVE FIREPLACE FOR TV
Line 8546	Note:
6Jul22 / 27Oct22	
Inv.421 17	2 - BED 2 & BED 3: INSTALL CAT-6A NETWORK CABLE - TERMINATED. LOCATIONS MAY VARY SLIGHTLY DUE TO JOIST LOCATIONS
Line 8548	Note:
6Jul22 / 27Oct22	

WINDOWS

Inv.421 2	1 - BASEMENT: INSTALL BASEMENT WINDOW - ENLARGE STANDARD WINDOW TO- 36 X 30
Line 8532	Note:
6Jul22 / 27Oct22	

TH-2
ARBOURVIEW
ELEV A 2,903 SQ. FT.

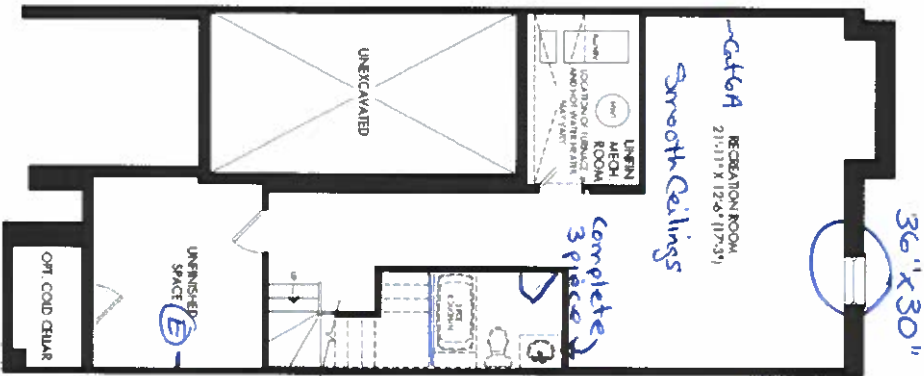


PARTIAL OPTIONAL KITCHEN

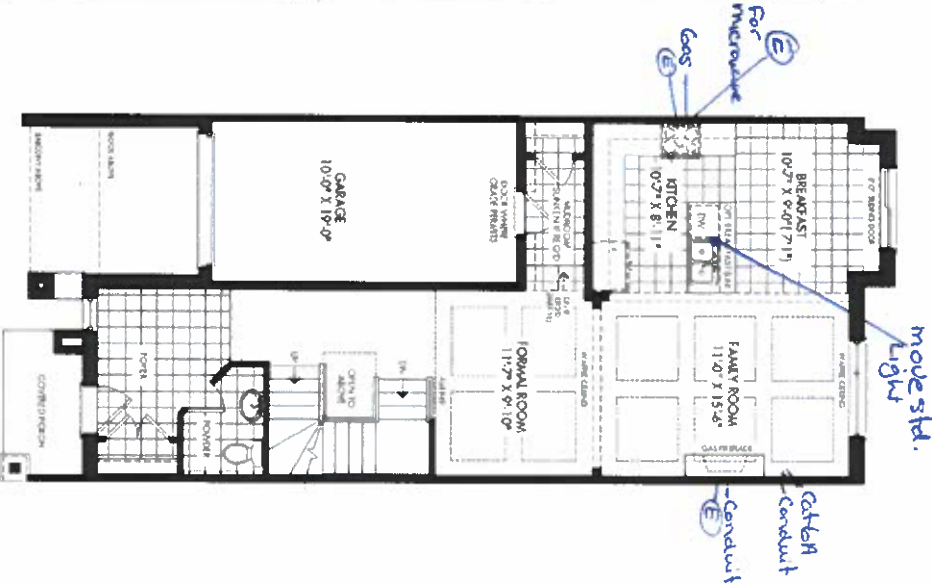
Lot 236-5
July 6, 2022

SCHEDULE "H"

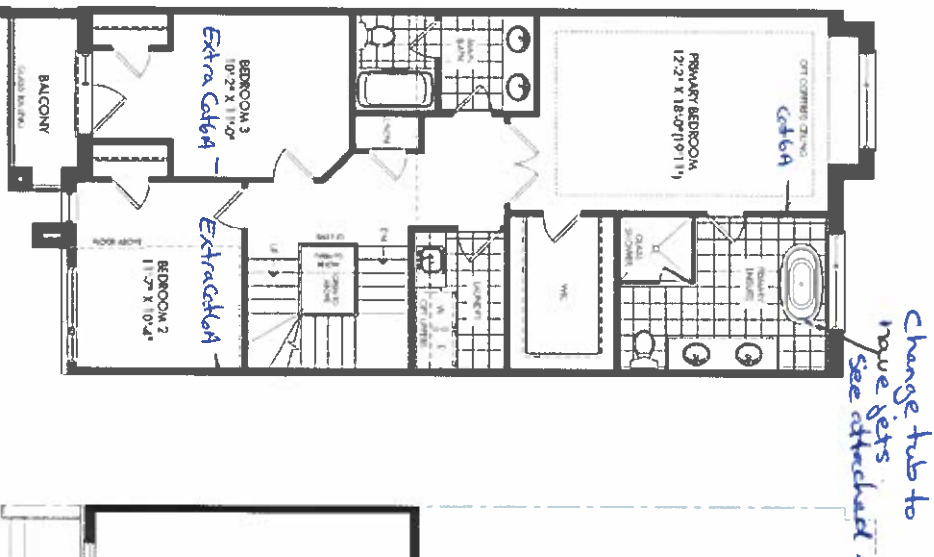
FINISHED
BASEMENT ELEV. A



GROUND FLOOR ELEV. A



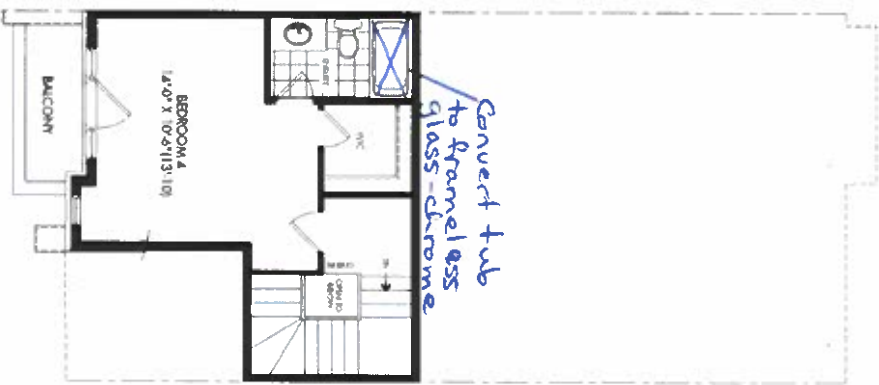
SECOND FLOOR ELEV. A



LOFT PLAN ELEV. A



OPT LOFT PLAN ELEV. A



JOSHUA CREEK
MONTAGE

2. dimensions are shown approximate and subject to normal construction variances. Dimensions may vary. Size, specifications, floor plans, and conditions are subject to change without notice. Drawings may show optional features which may not be included in the base price. Plans may be reviewed. Bids and/or modifications may apply. Contact is required for further details. All drawings reserved. Valley Homes.

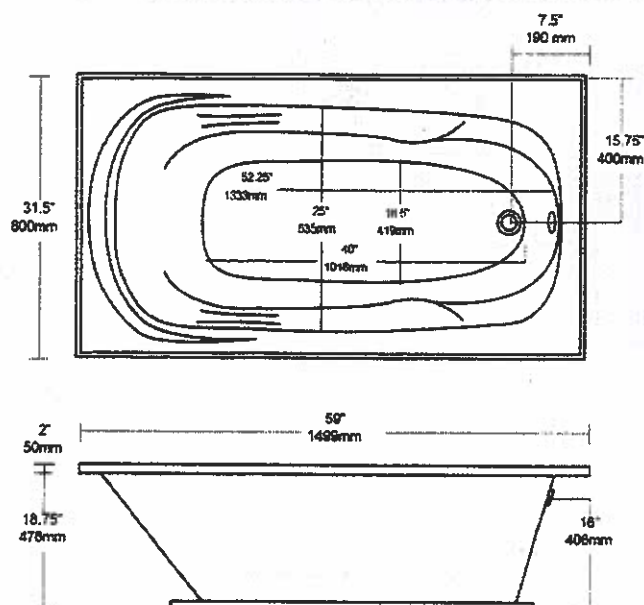
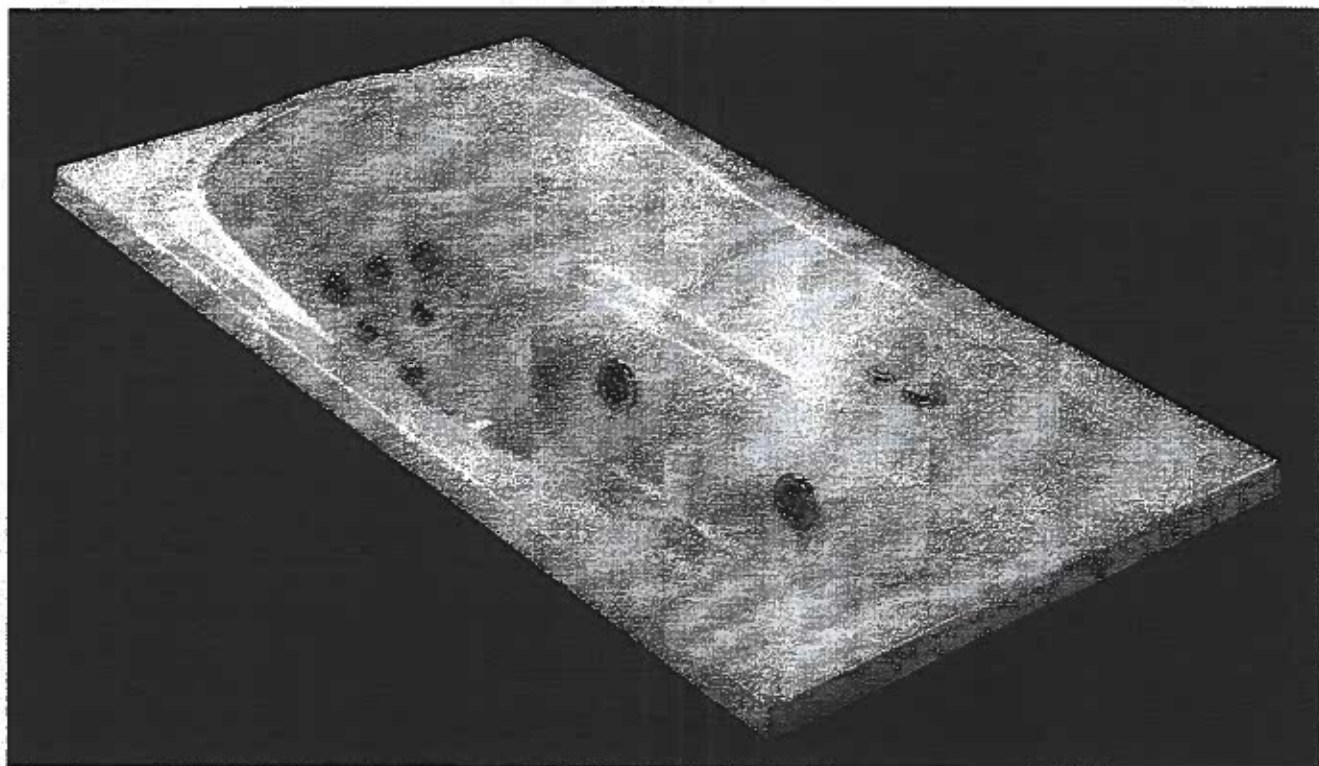
VALE
RY
HOMES



Lot 236 5

MONA LISA

XP532



- DOUBLE-REINFORCED BASE
- DEEP SOAKING AREA
- CSA APPROVED
- CAN/ULC-S102 TESTED

\$1,752.00

Available with WHIRLPOOL or THERAPEUTIC AIR-FORCE options

TEL: (905) 470-8066
FAX: (905) 470-9663
TOLL-FREE: +1 (800) 561-0157

TUBCO WHIRLPOOLS LTD.

2715 14th Avenue
Markham ON. L3R 0H9

tubco.com
marketing@tubco.com