



CONSTRUCTION SUMMARY

Joshua Creek - 222-1 EDGEMERE (TH-03) A END

Registere Plan Number: Municipal Address: Closing: 18-Sep-23

BONUS

Inv.467 20 Line 9538 14Oct22 / 19Oct22	1 - BONUS PACKAGE: \$5,000.00 WORTH OF UPGRADES FROM VALERY HOMES DÉCOR CENTRE IS BEING APPLIED TOWARD THE STRUCTURAL APPOINTMENT Note:
---	--

CABINETRY

Inv.706 21 Line 13156 15Aug24 / 23Aug24	1 - KITCHEN: INSTALL FRIDGE ENCLOSURE (H04) Note:
--	--

Inv.706 22 Line 13157 15Aug24 / 23Aug24	2 - KITCHEN: INSTALL VALANCE FOR LIGHT UNDER UPPER CABINETS (J11) Note:
--	--

CONSTRUCTION

Inv.467 2 Line 9520 14Oct22 / 19Oct22	1 - BASEMENT: INSTALL COLD CELLAR Note:
--	--

COUNTERTOP

Inv.706 23 Line 13168 15Aug24 / 23Aug24	1 - KITCHEN: INSTALL MSI 2 THROUGHOUT KITCHEN, INCLUDING ISLAND Note:
--	--

Inv.706 24 Line 13169 15Aug24 / 23Aug24	1 - KITCHEN: INSTALL OPTIONAL BREAKFAST BAR IN MSI 2 ON ISLAND Note:
--	---

ELECTRICAL

Inv.467 10 Line 9528 14Oct22 / 19Oct22	1 - KITCHEN: INSTALL RECEPTACLES - ADDITIONAL 15 AMP 120 VOLT RECEPTACLE FOR GAS STOVE Note:
---	---



CONSTRUCTION SUMMARY

Joshua Creek - 222-1 EDGEMERE (TH-03) A END

Registere Plan Number: Municipal Address: Closing: 18-Sep-23

Inv.467 8	1 - KITCHEN: INSTALL CABINET LIGHTING - UNDERMOUNT T-5 LED VALANCE LIGHT
Line 9526	*DOES NOT INCLUDE VALANCE. VALANCE MUST BE PURCHASED AT THE TIME OF COLOUR APPOINTMENT
Note:	
14Oct22 / 19Oct22	
Inv.467 4	1 - KITCHEN: CEILING FIXTURE - RELOCATE STANDARD CEILING FIXTURE. LOCATIONS MAY VARY SLIGHTLY DUE TO JOIST LOCATIONS
Line 9522	
Note:	
14Oct22 / 19Oct22	
Inv.467 5	1 - KITCHEN: INSTALL CEILING LIGHT ROUGH IN - FOR 1 CEILING LIGHT, ON EXISTING SWITCH (DOES NOT INCLUDE FIXTURE). LOCATIONS MAY VARY SLIGHTLY DUE TO JOIST LOCATIONS
Line 9523	
Note:	
14Oct22 / 19Oct22	
Inv.467 6	1 - GARAGE: INSTALL RECEPTACLES - EV STATION DEDICATED 240 VOLT RECEPTACLE
Line 9524	
Note:	
14Oct22 / 19Oct22	
Inv.467 17	1 - FAMILY ROOM: INSTALL ELECTRICAL - ABOVE FIREPLACE FOR FUTURE TV
Line 9535	
Note:	
14Oct22 / 19Oct22	

HARDWOOD FLOORING

Inv.706 25	1 - MAIN FLOOR- UPPER HALLS: INSTALL UPGRADE NOUVEAU 6 HARDWOOD IN LIEU OF STANDARD HARDWOOD. TO GO IN FORMAL ROOM, FAMILY ROOM, UPPER AND LOFT HALLS
Line 13170	
Note:	
15Aug24 / 23Aug24	

HVAC

Inv.467 7	1 - AIR CONDITIONER AND FLOW - THROUGH HUMIDIFIRE AND MEDIA FILTER - ML14- 14 SEER - 2.5 TON - WITH FLOW THRU HUMIDIFIER AND 5 INCH MEDIA FILTER
Line 9525	
Note:	
14Oct22 / 19Oct22	
Inv.467 9	1 - KITCHEN: INSTALL GAS PIPING AND OTHER - GAS LINE R/I FOR MAIN FLOOR - STOVE
Line 9527	
Note:	
14Oct22 / 19Oct22	



Joshua Creek - 222-1 EDGEMERE (TH-03) A END

Registree Plan Number: Municipal Address: Closing: 18-Sep-23

INTERIOR DOORS & TRIM

MISCELLANEOUS

PLUMBING

VACCUM/BELL

Inv.467	1 - FAMILY ROOM: INSTALL INSTALL 1 1 /4" ORANGE FLEX CONDUIT ABOVE FIREPLACE
16	FOR FUTURE TV ABOVE
Line 9534	Note:
14Oct22 / 19Oct22	



CONSTRUCTION SUMMARY

Joshua Creek - 222-1 EDGEMERE (TH-03) A END

Registere Plan Number: Municipal Address: Closing: 18-Sep-23

Inv.467 18	1 - CENTRAL VACUUM - CENTRAL VAC PIPING COMPLETE ROUGH-IN TO GARAGE - TWO OUTLETS PER FLOOR AND ONE OUTLET IN BASEMENT R/I ONLY
Line 9536	Note:
14Oct22 / 19Oct22	

Inv.467 19	1 - ALARM ROUGH IN - KEYPAD (X2), SIREN (X1), MOTIONS (X2), DOOR CONTACTS (3). ROUGHED BACK TO HYDRO PANEL
Line 9537	Note:
14Oct22 / 19Oct22	

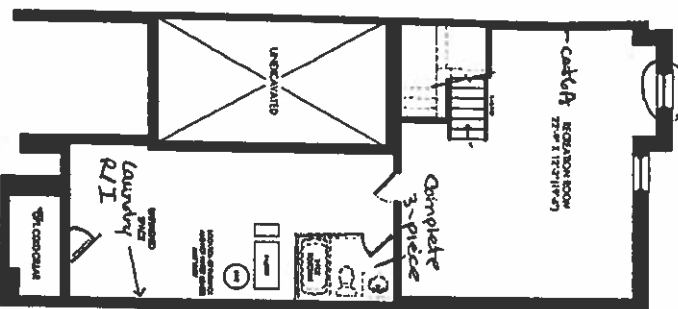
WINDOWS

Inv.467 1	1 - BASEMENT: INSTALL BASEMENT WINDOW - EGRESS - ENLARGE STANDARD WINDOW AND MAKE EGRESS- 56 X 30
Line 9519	Note:
14Oct22 / 19Oct22	

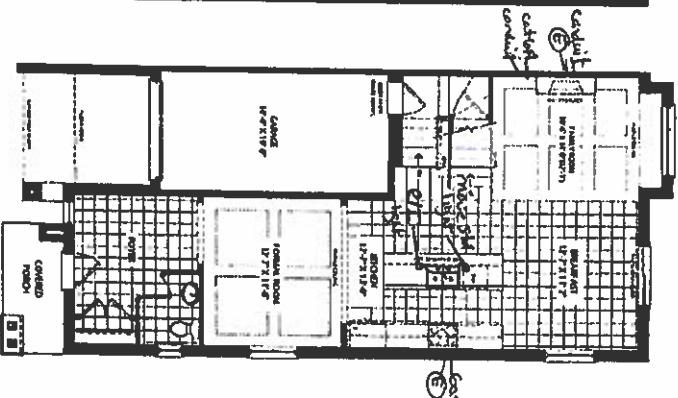
**TH-3
EDGEMERE
ELEV. END 3,107 SQ.FT.**

ELEV. A END 3,107 SQ. FT.

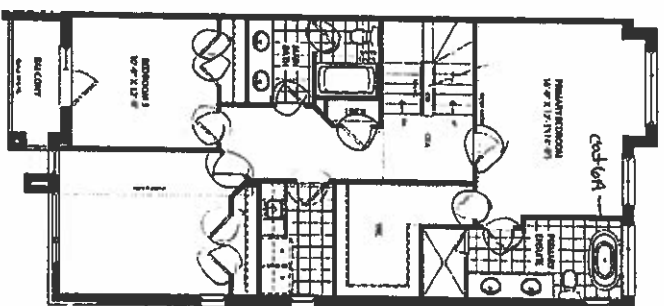
FINISHED BASEMENT ELEV A
Express END CONDITION
56" X 30"



GROUND FLOOR ELEV. A
END CONDITION

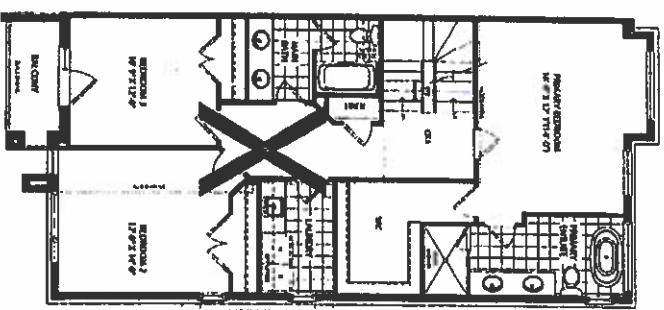


SECOND FLOOR ELEV A
END CONDITION



Extended Height doors
on 2nd Floor.

SECOND FLOOR ELEV A
END CONDITION CORNER UPGRADE



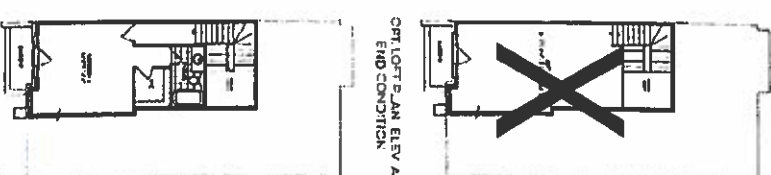
DOFT 2024 ELEV A
FIND CONDITION

SCHEDULE "H"
201-222-1 (04)

201-222-1

ॐ

CPT, LOT PLAN ELEV A
END CONDITION



JOSHUA CREEK
MONTAGE

As a result, the respondents' judgments of the appropriateness of the responses to the scenarios were significantly lower than those of the control group. The respondents also rated the responses to the scenarios as less appropriate than those of the control group. The respondents also rated the responses to the scenarios as less appropriate than those of the control group. The respondents also rated the responses to the scenarios as less appropriate than those of the control group.

VALERY