



CONSTRUCTION SUMMARY

Joshua Creek - 222-3 EDGEMERE (TH-03) A

Registere Plan Number: Municipal Address: Closing: 18-Sep-23

BONUS

Inv.468 20 Line 9576 18Oct22 / 19Oct22	1 - BONUS PACKAGE: \$5,000.00 WORTH OF UPGRADES FROM VALERY HOMES DÉCOR CENTRE IS BEING APPLIED TOWARD THE STRUCTURAL APPOINTMENT. Note:
---	---

CABINETRY

Inv.708 22 Line 13172 16Aug24 / 20Aug24	1 - KITCHEN: INSTALL FRIDGE ENCLOSURE (H04) Note:
--	--

CONSTRUCTION

Inv.468 3 Line 9545 18Oct22 / 19Oct22	1 - BASEMENT: INSTALL COLD CELLAR Note:
--	--

COUNTERTOP

Inv.708 23 Line 13173 16Aug24 / 20Aug24	1 - KITCHEN: INSTALL MSI 2 QUARTZ THROUGHOUT KITCHEN INCLUDING ISLAND Note:
Inv.708 24 Line 13174 16Aug24 / 20Aug24	1 - KITCHEN: INSTALL OPTIONAL BREAKFAST BAR IN MSI 2 QUARTZ THROUGHOUT ON ISLAND Note:

ELECTRICAL

Inv.468 17 Line 9559 18Oct22 / 19Oct22	1 - FAMILY ROOM: INSTALL ELECTRICAL - ROUGH-IN FOR 15 AMP ABOVE FIREPLACE FOR FUTURE TV Note:
Inv.468 4 Line 9546 18Oct22 / 19Oct22	1 - KITCHEN: CEILING FIXTURE - RELOCATE STANDARD CEILING FIXTURE. LOCATIONS MAY VARY SLIGHTLY DUE TO JOIST LOCATIONS Note:



CONSTRUCTION SUMMARY

Joshua Creek - 222-3 EDGEMERE (TH-03) A

Registere Plan Number: Municipal Address: Closing: 18-Sep-23

Inv.468 5	1 - KITCHEN: CEILING LIGHT ROUGH IN - FOR 1 CEILING LIGHT, ON EXISTING SWITCH (DOES NOT INCLUDE FIXTURE). TO GO ABOVE ISLAND, LOCATIONS MAY VARY SLIGHTLY DUE TO JOIST LOCATIONS
Line 9547	Note:
18Oct22 / 19Oct22	
Inv.468 6	1 - GARAGE: RECEPTACLES - EV STATION DEDICATED 240 VOLT RECEPTACLE
Line 9548	Note:
18Oct22 / 19Oct22	
Inv.468 7	6 - FAMILY ROOM: INSTALL SIX (6) POT LIGHT - 4" LED NON-INSULATED CEILINGS, ON SAME SWITCH. DELETE STANDARD LIGHT. LOCATIONS MAY VARY SLIGHTLY DUE TO JOIST LOCATIONS
Line 9549	Note:
18Oct22 / 19Oct22	
Inv.468 10	1 - KITCHEN: INSTALL RECEPTACLES - ADDITIONAL 15 AMP 120 VOLT RECEPTACLE FOR GAS STOVE
Line 9552	Note:
18Oct22 / 19Oct22	
Inv.468 19	1 - PRIMARY ENSUITE: INSTALL RECEPTACLES - DEDICATED 15 AMP 120 VOLT GFCI RECEPTACLE (INTERIOR), BEHIND TOILET
Line 9575	Note:
18Oct22 / 19Oct22	

HARDWOOD FLOORING

Inv.708 25	1 - MAIN FLOOR & UPPER HALLS: INSTALL UPGRADED NOUVEAU 6 HARDWOOD IN LIEU OF STANDARD HARDWOOD. TO GO IN FORMAL ROOM, FAMILY ROOM, UPPER AND LOFT HALLS
Line 13175	Note:
16Aug24 / 20Aug24	

HVAC

Inv.468 8	1 - AIR CONDITIONER AND FLOW - THROUGH HUMIDIFIRE AND MEDIA FILTER - ML14- 14 SEER - 2.5 TON - WITH FLOW THRU HUMIDIFIER AND 5 INCH MEDIA FILTER
Line 9550	Note:
18Oct22 / 19Oct22	
Inv.468 9	1 - KITCHEN: INSTALL GAS PIPING AND OTHER - GAS LINE R/I FOR MAIN FLOOR - STOVE
Line 9551	Note:
18Oct22 / 19Oct22	

MISCELLANEOUS

**Joshua Creek - 222-3 EDGEMERE (TH-03) A**

Registree Plan Number: Municipal Address: Closing: 18-Sep-23

PLUMBING

VACCUM/BELL

SummaryMS.rpt 08Feb19

Printed and Sent: 23-Aug-24



CONSTRUCTION SUMMARY

Joshua Creek - 222-3 EDGEMERE (TH-03) A

Registere Plan Number: Municipal Address: Closing: 18-Sep-23

Inv.468 18 Line 9560	1 - ALARM ROUGH IN - KEYPAD (X2), SIREN (X1), MOTIONS (X2), DOOR CONTACTS (3). ROUGHED BACK TO HYDRO PANEL Note:
18Oct22 / 19Oct22	

Inv.468 1 Line 9542	1 - CAT 6A LOCATION SKETCH. LOCATIONS MAY VARY SLIGHTLY DUE TO JOIST LOCATIONS Note:
18Oct22 / 19Oct22	

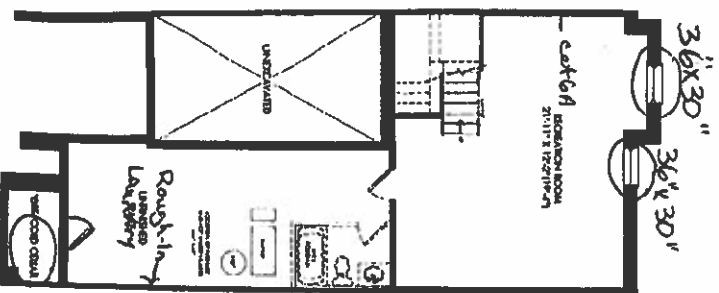
WINDOWS

Inv.468 2 Line 9543	2 - BASEMENT: BASEMENT WINDOW - ENLARGE TWO (2) STANDARD WINDOW TO- 36 X 30 Note:
18Oct22 / 19Oct22	

EDGE MERE
ELEV. 2914 SQ. FT.

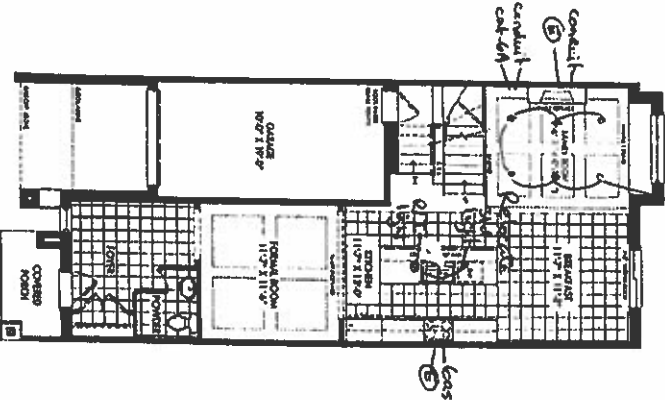
ELEVA 2914 SQ.FT.

FINISHED
BASEMENT ELEV A

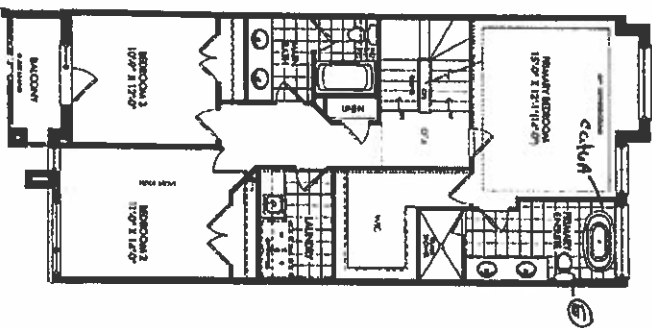


GROUND FLOOR ELEV. A

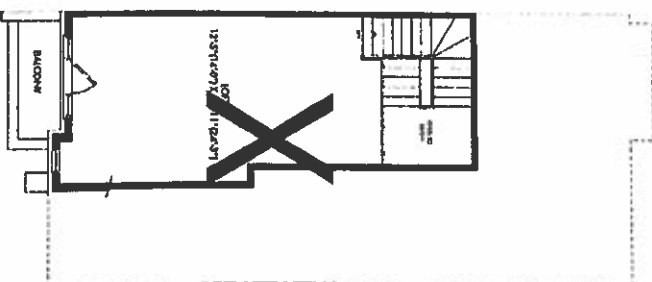
to put lights on
same switch
Delete Std. Light



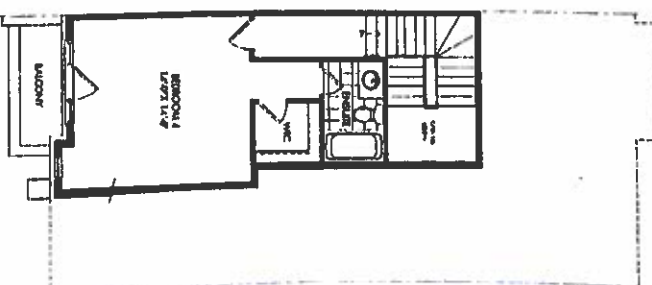
SECOND FLOOR ELEV A



LOFT PLAN LEVEL A



001 101 PLAN ELEV A



SCHEDULE "H"

222-308

Aug. 20, 24

JOSHUA CREEK
MONTAGE

MONTAGE

[illegible]**VALERY**
HOMERS