



CONSTRUCTION SUMMARY

Joshua Creek - 225-4      ARBOURVIEW (TH-02) B

Registere Plan Number:    Municipal Address:    Closing:

ELECTRICAL

Inv.701 1	1 - ELECTRICAL - DEDICATED 15 AMP 120 V FOR FUTURE TV ABOVE FIREPLACE
Line 13115	Note:
13Aug24 / 27Aug24	
Inv.701 3	1 - ELECTRICAL - ROUGH-IN FOR AC UNIT. INCLUDES BREAKER & LOW VOLTAGE WIRE
Line 13117	Note:
13Aug24 / 27Aug24	
Inv.701 6	6 - FAMILY ROOM: INSTALL SIX (6) POT LIGHTS- 4" LED NON-INSULATED CEILINGS. ONE IN EACH WAFFLE. KEEP STANDARD LIGHT
Line 13122	Note: Location may vary slightly due to joist location
13Aug24 / 27Aug24	
Inv.701 7	4 - FORMAL ROOM: INSTAL FOUR (4) POT LIGHT - 4" LED NON-INSULATED CEILINGS. ONE IN EACH WAFFLE, KEEP STANDARD LIGHT
Line 13123	Note: Location may vary slightly due to joist location
13Aug24 / 27Aug24	

HVAC

Inv.701 2	1 - FAMILY ROOM: INSTALL 1 1/4" ORANGE FLEX CONDUIT ABOVE FIREPLACE FOR FUTURE TV
Line 13116	Note:
13Aug24 / 27Aug24	

INTERIOR DOORS & TRIM

Inv.701 8	1 - FORMAL ROOM - FAMILY ROOM: INSTALL 5X5 A-110 INSIDE WAFFLE CEILINGS
Line 13233	Note:
13Aug24 / 27Aug24	

PLUMBING

Inv.701 4	1 - KITCHEN: INSTALL EXTRA ROUGH-IN LINE FOR FRIDGE ICE MAKER WITH SHUT-OFF
Line 13118	Note:
13Aug24 / 27Aug24	
Inv.701 5	1 - BASEMENT: INSTALL 3 PIECE BATHROOM - EXTRA 3-PIECE FINISHED BATH, COMPLETE
Line 13119	Note:
13Aug24 / 27Aug24	

lot 225-4

**FINISHED  
LAST PART CITY B**

## PARTIAL OPTICAL KITCHEN

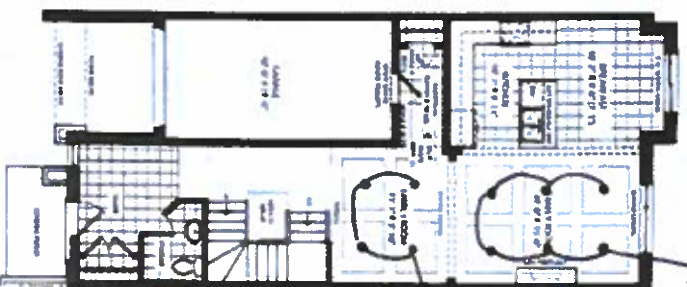


**GROUND FLOOR LAYOUT**

## SECOND FLOOR (L.F.V.D.)

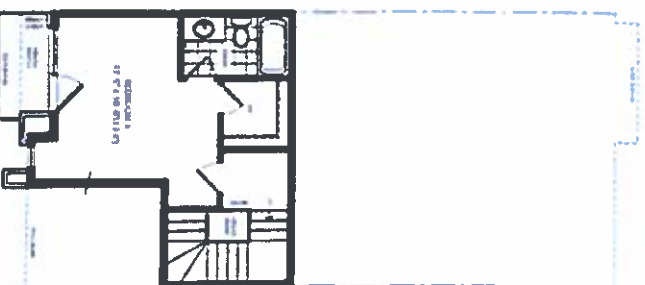
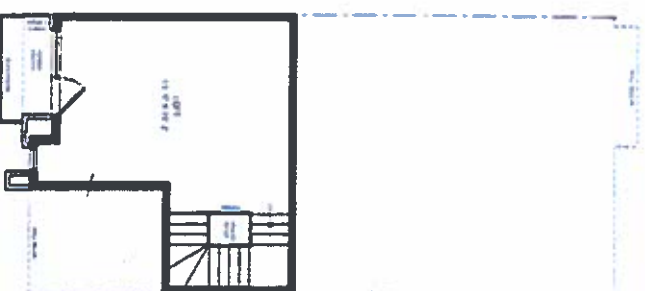
1071 REAM  
LITV 6

OFFICE PLAN ELEVEN



6 pots on separate switch.  
Keep Std. light

4 pots  
on  
separate  
switch.  
King St  
light



**JOSHUA CREEK**  
MONING

**VALERY**[illegible]

RECEIVED