

## LEGEND / PLANS

<p>⊙ SMOKE ALARM</p> <p>⊙ DETECTOR</p> <p>WATERPROOF DUPLEX OUTLET</p> <p>VENTS AND INTAKES</p> <p>HOSE BIB</p> <p>EXHAUST FAN</p> <p>FLOOR DRAIN</p>	<p>D.J. DOUBLE JOIST</p> <p>P.T. PRESSURE TREATED LUMBER</p> <p>G.T. GIRDEN TRUSS</p> <p>A.F.F. ABOVE FINISHED</p> <p>SOLID BEARING (TO BE SAME WITH AS SUPPORTED BEARING)</p> <p>POINT LOAD</p> <p>FLAT RACK</p> <p>2 STORY WALL</p>
---	---

## LEGEND / ELEVATIONS

<p>● COLD CELLAR VENT</p> <p>☼ STOVE VENT</p> <p>☼ FIRE PLACE VENT</p> <p>● DRYER VENT</p> <p>⊙ HYDRO METER</p> <p>⊙ GAS METER</p>	<p>EXT. LIGHT FIXTURE (WALL MOUNTED)</p> <p>UG UNDER SIDE</p> <p>FG FIXED GLAZING</p> <p>BG GLASS BLOCK</p> <p>GB BLACK GLASS</p>
--	---


[illegible]

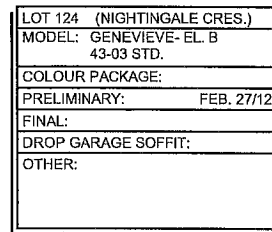
ARCHITECTURAL REVIEW & APPROVAL

AUG 21 2012

John G. Williams, Licensed Architect

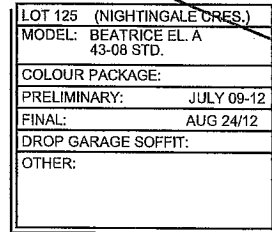
LOT 128  
J. [Signature]  
STREETSCAPES  
CLIENT  
ZANCOR HOMES  
OLDE WINCHESTER PH7  
BROOKLIN, ONTARIO

 <p><b>RN design</b>  <i>Imagine • Inspire • Create</i>          TEL (909) 738-3177          FAX (909) 738-5410          DWG@RNDISIGN.COM</p>	<p><b>SCALE</b></p> <p><b>N.T.S.</b></p> <p><b>PROJECT NUMBER</b></p> <p><b>09014</b></p> <p><b>PAGE</b></p>



LOT 123 (NIGHTINGALE CRES.)	
MODEL: EDITH - EL C	
43-02 REV.	
COLOUR PACKAGE:	
PRELIMINARY:	JUL. 12/12
FINAL:	JUL. 17/12
DROP GARAGE SOFFIT:	
OTHER:	

LOT 122 (NIGHTINGALE CRES.)	
MODEL: FLORENCE - EL. B 43-05 STD.	
COLOUR PACKAGE:	
PRELIMINARY:	SEPT.07-10
FINAL:	SEPT.20/10
DROP GARAGE SOFFIT: 18"	
OTHER: WIDEN PORCH STAIRS ADD BASEMENT WINDOW	



- Paired-in Place Concrete  
steps with brick surrounds

NOTE:  
FOR ARCHITECTURAL SUBDIVISION  
CONTROL PURPOSE ONLY