
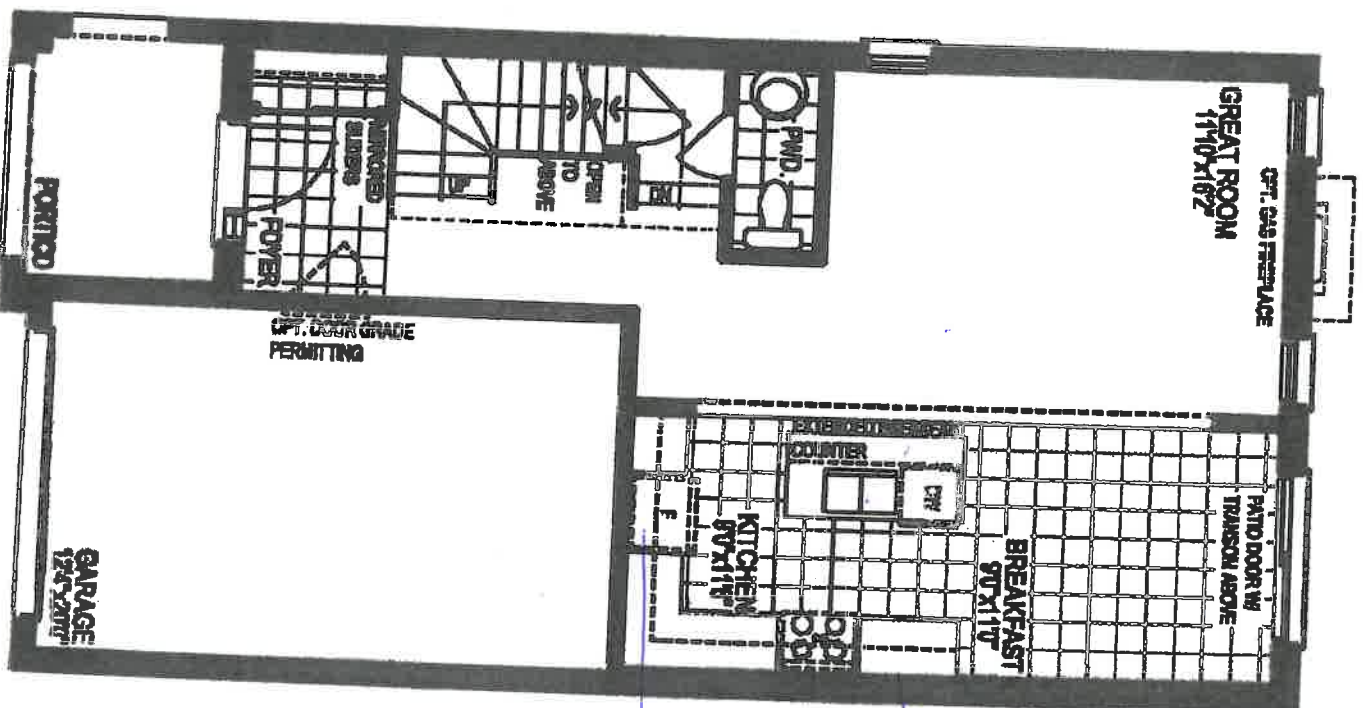


ANGUS SOUTH

Item #	Construction Details ANGUS SOUTH: LOT 142L Model Type & Elevation : 30-03 CHERRY ELEVATION A Purchasers Names : OSCAR VERDUGA		
		Date	Note
Included	<i>Rough-in for 3 Piece in basement</i>		Bonus Package
Included	<i>3 piece stainless steel kitchen appliances with white top loading washer and dryer</i>		Bonus Package
Included	<i>Chimney Hood Fan</i>		Bonus Package
Included	<i>Natural finish laminate flooring on main floor in non tiled areas as per plan</i>		Bonus Package
Included	<i>9' main floor ceilings, 8 ft ceilings on second and basement</i>		Bonus Package
Included	<i>Carpet Grade Stairs with Oak pickets</i>		Bonus Package
Included	<i>Glass shower in Master Ensuite as per plan - SEE ITEM #4</i>	-	Bonus Package
1/	CABINETS - KITCHEN/ISLAND - UPGRADE #1 CABINETS	10-Feb-17	COLOURS
2/	PLUMBING - KITCHEN - ADD WATER LINE TO FRIDGE	10-Feb-17	COLOURS
3/	MASTER ENSUITE - DOUBLE SINK	10-Feb-17	COLOURS
4/	MASTER ENSUITE - FRAMELESS GLASS SHOWER IN LIEU OF FRAMED	10-Feb-17	COLOURS
5/	MASTER ENSUITE - SHOWER WALL TILE 4" X 16"	10-Feb-17	COLOURS
6/	LIGHTING - TO BE CENTERED IN ALL ROOMS		
7/	DELETE ALL WHITE CERAMIC ACCESSORIES		

LOT 1421 - PINE DIVER SOUTH



GROUND FLOOR PLAN, EL. 'A'

(21)

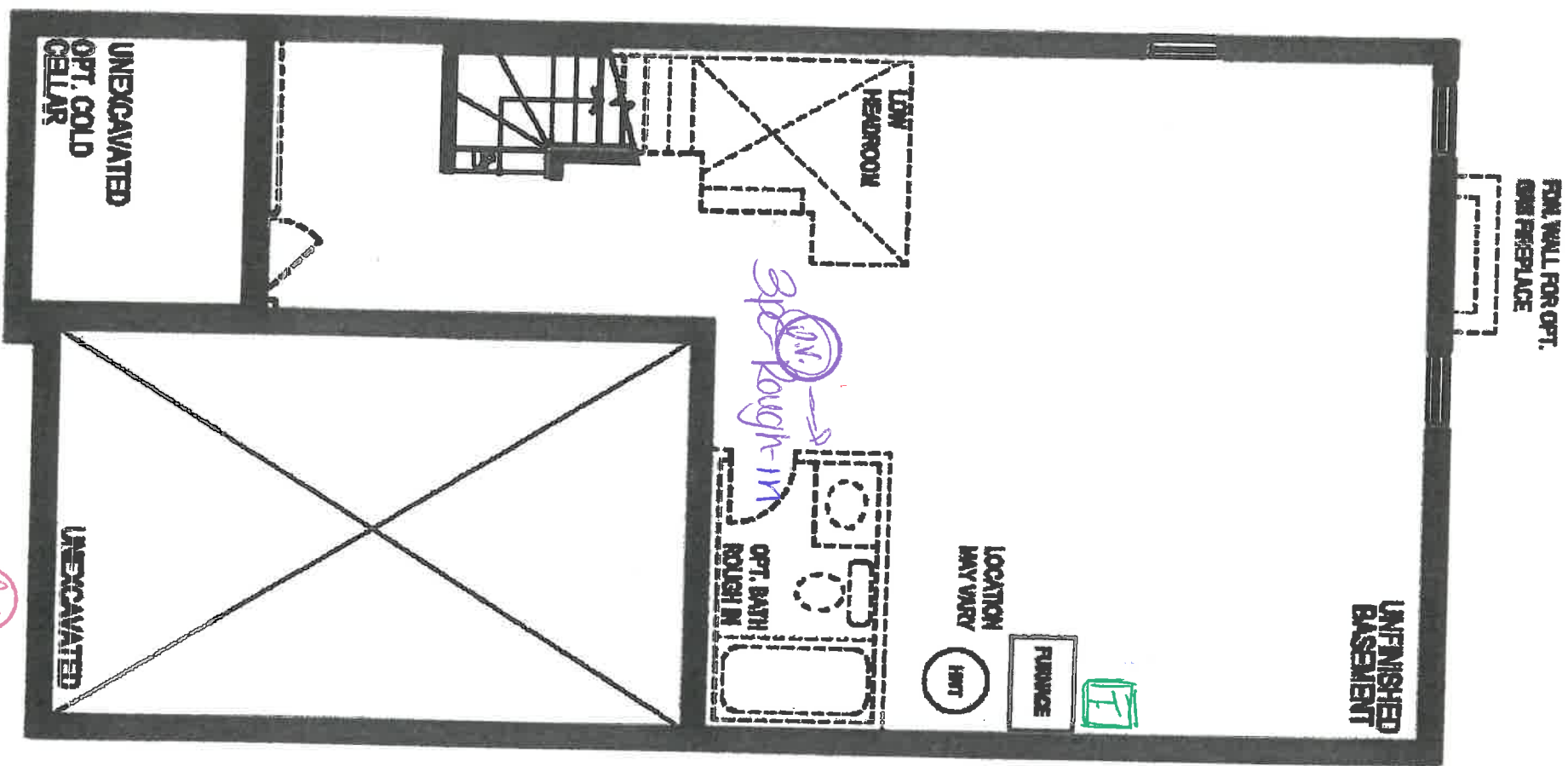
THE CHERRY

[Unit 3003]

1675 sq. ft. | 1700 sq. ft. | 1700 sq. ft.
Elev. A | Elev. B | Elev. C

Prices and specifications are subject to change without notice. The patterns may vary. Window sizes and location may vary. Location of furnaces and water tank are approximate. Steps may be required at front entries, rear entries and garage man door entries due to grade. Actual usable floor space may vary from the stated floor area. All stated dimensions are approximate. Room dimensions may change with style chosen. See Sales representative for Style B and/or C. All renderings are artist's concept. E & O.E. [3003]

LOT 142 L - PINE RIVER SOUTH



BASEMENT PLAN, EL. 'A'

THE CHERRY

[Unit 3003]

1675 sq. ft.

Elev. A

1700 sq. ft.

Elev. B

1700 sq. ft.

Elev. C

Prices and specifications are subject to change without notice. The patterns may vary. Window sizes and location may vary. Location of furnace and water tank are approximate. Steps may be required at front entries, rear entries and garage man door entries due to grade. Actual usable floor space may vary from the stated floor area. All stated dimensions are approximate. Room dimensions may change with style chosen. See Sales representative for Style B and/or C. All renderings are artist's concept. F & O F 1306231



Pike River South.

APPLIANCE SPEC INFORMATION SHEET

STE & LOT:

LOT 142L

DATE:

January 13 2017

SITING:

☒ Standard

☐ Reverse

RANGE

☒ 30" (STD)

☐ 36"

☐ 48"

☐ GAS

☐ COOKTOP (APRON)

☐ COOKTOP (DROPIN)

☐ AMPS

☐ AMPS

☐ AMPS

REFRIGERATOR

☒ STANDARD OPENING 36" X 72"

☐ BUILT IN FRIDGE

☐ WATERLINE REQUIRED

☐ PANELLED/INTEGRATED

☐ FLUSH INSET

WALL OVENS

☐ 30"

☐ SINGLE

☐ DOUBLE

☐ STEAM OVEN

☐ WARMING DRAWER

☐ AMPS

☐ AMPS

☐ AMPS

☐ AMPS

MICROWAVES

☐ BUILT IN MICRO

☐ MICRO TRIM KIT

☐ OVER THE RANGE

☐ AMPS

☐ MODEL

☐ AMPS

HOOD FANS

☐ CHIMNEY (CENTRE VENT)

☐ UNDER CABINET

☐ FLUSH INSET

☒ 6 INCH (STD)

☐ 8 INCH

☐ 10 INCH

DISHWASHER

☒ 24" (STD SIZE)

LAUNDRY

☒ FRONT LOADING SIDE BY SIDE

☐ STACKABLE

Additional charges may apply for cabinetry, electrical and plumbing in order to accommodate the specs given by the homeowner.

NOTE: It is the Purchaser's responsibility to coordinate delivery, installation and hook up of appliances and to ensure they are installed as per Manufacturers specifications after closing.

Purchaser acknowledges responsibility for providing correct specification for such appliances. The purchaser agrees to deliver forthwith to the Builder the manufacturer's appliance specifications where the size exceeds the standard openings.

If specs not received, the standard openings as determined by Zanor Homes will be provided. If rework/repair is required due to late specs received, additional costs will be applied.

Appliance Specs are DUE:

2 WEEKS FROM SIGNED DATE BELOW – Specs received after this date, if accepted, an administration fee of minimum \$250 will apply

Appliance Specs

RECEIVED

Purchaser Signature

[Signature]

Date

January 13 2017

Purchaser Signature

Date

WDT920SADM

Whirlpool Gold® Dishwasher with TotalCoverage Spray Arm

<http://www.whirlpool.com>

Key Features:

- Sensor Cycle
- TotalCoverage Spray Arm
- Silverware Spray
- Target Clean™ Option
- AnyWare™ Plus Silverware Basket
- EZ-2-Lift™ Adjustable Upper Rack
- Upgraded Upper Rack Glides
- 1-Hour Wash Cycle
- EZ Adjustable Tines
- No One Has Fewer Repairs 18 Years in a Row
- ENERGY STAR® Qualified
- Sani Rinse Option

Product Dimensions:

Height: 34 1/2
Width: 23 7/8
Depth: 24 1/2

Electrical Requirements:

15.

Additional Information:

[Use And Care Guide](#)
[Dimension Guide](#)
[Installation Guide](#)
[Energy Guide](#)
[Warranty Certificate](#)

Available in:

- Black Ice
- White Ice
- Monochromatic Stainless Steel



Pine Aes South.

LOT 142L

OSCAR VELAZQUEZ





Bottom Mount Refrigerator

lot 142-L
Pine River South

PRODUCT MODEL NUMBERS

WRT332SNB WRF6669WB
WRF5669WB WRF540CWB

Electrical: A 115-volt, 60-Hz, AC-only, 15- or 20-amp fused, grounded electrical supply is required. It is recommended that a separate circuit serving only your refrigerator be provided. Use an outlet that cannot be turned off by a switch. Do not use an extension cord.

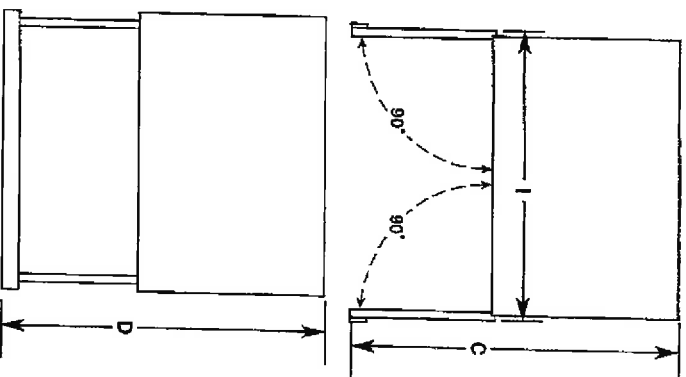
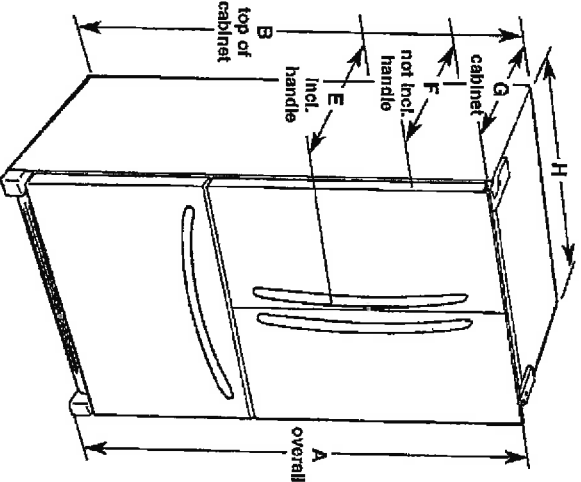
NOTE: Before performing any type of installation, cleaning, or removing a light bulb, turn the control (Thermostat, Refrigerator or Freezer Control depending on the model) to Off and then disconnect the refrigerator from the electrical source. When you are finished, reconnect the refrigerator to the electrical source and reset the control (Thermostat, Refrigerator or Freezer Control depending on the model) to the desired setting. See "Using the Controls."

Water: A cold water supply with water pressure between 30 and 120 psi (207 and 827 kPa) is required to operate the ice maker and water dispenser. If you have questions about your water pressure, call a licensed, qualified plumber.

IMPORTANT: The pressure of the water coming out of a reverse osmosis system going to the water inlet valve of the refrigerator needs to be between 35 and 120 psi (241 and 827 kPa).

Reverse Osmosis Water Supply: If a reverse osmosis water filtration system is connected to your cold water supply, the water pressure to the reverse osmosis system needs to be a minimum of 40 to 60 psi (276 to 414 kPa).

PRODUCT DIMENSIONS





Model Number/ Size	Height - Overall "A"	Height - Top of Cabinet "B"	Depth - Doors Open 90° "C"	Depth - Drawer Open "D"	Depth - With Handles "E"	Depth - Without Handles "F"	Depth - Cabinet Only "G"	Width - Cabinet "H"	Width - Door Open 90° "I"
WRF5669WB 25.2 cu. ft.	70 3/8" (178.1 cm)	69 3/4" (174.8 cm)	49 1/2" (122.1 cm)	53 1/2" (135 cm)	35 3/4" (90 cm)	32 5/8" (83.7 cm)	29 1/2" (74 cm)	35 5/8" (90.5 cm)	43 3/4" (110.2 cm)
WRF5669WB 25.2 cu. ft.	70 3/8" (178.1 cm)	69 3/4" (174.8 cm)	49 1/2" (122.1 cm)	53 1/2" (135 cm)	35 3/4" (90 cm)	32 5/8" (83.7 cm)	29 1/2" (74 cm)	35 5/8" (90.5 cm)	43 3/4" (110.2 cm)
WRF5669WB 25.2 cu. ft.	70 3/8" (178.1 cm)	69 3/4" (174.8 cm)	49 1/2" (122.1 cm)	53 1/2" (135 cm)	35 3/4" (90 cm)	32 5/8" (83.7 cm)	29 1/2" (74 cm)	35 5/8" (90.5 cm)	43 3/4" (110.2 cm)
WRF5669WB 25.2 cu. ft.	70 3/8" (178.1 cm)	69 3/4" (174.8 cm)	49 1/2" (122.1 cm)	53 1/2" (135 cm)	35 3/4" (90 cm)	32 5/8" (83.7 cm)	29 1/2" (74 cm)	35 5/8" (90.5 cm)	43 3/4" (110.2 cm)
WRF5669WB 25.2 cu. ft.	70 3/8" (178.1 cm)	69 3/4" (174.8 cm)	49 1/2" (122.1 cm)	53 1/2" (135 cm)	35 3/4" (90 cm)	32 5/8" (83.7 cm)	29 1/2" (74 cm)	35 5/8" (90.5 cm)	43 3/4" (110.2 cm)
WRF5669WB 25.2 cu. ft.	70 3/8" (178.1 cm)	69 3/4" (174.8 cm)	49 1/2" (122.1 cm)	53 1/2" (135 cm)	35 3/4" (90 cm)	32 5/8" (83.7 cm)	29 1/2" (74 cm)	35 5/8" (90.5 cm)	43 3/4" (110.2 cm)
WRF5669WB 25.2 cu. ft.	70 3/8" (178.1 cm)	69 3/4" (174.8 cm)	49 1/2" (122.1 cm)	53 1/2" (135 cm)	35 3/4" (90 cm)	32 5/8" (83.7 cm)	29 1/2" (74 cm)	35 5/8" (90.5 cm)	43 3/4" (110.2 cm)
WRF5669WB 25.2 cu. ft.	70 3/8" (178.1 cm)	69 3/4" (174.8 cm)	49 1/2" (122.1 cm)	53 1/2" (135 cm)	35 3/4" (90 cm)	32 5/8" (83.7 cm)	29 1/2" (74 cm)	35 5/8" (90.5 cm)	43 3/4" (110.2 cm)
WRF5669WB 25.2 cu. ft.	70 3/8" (178.1 cm)	69 3/4" (174.8 cm)	49 1/2" (122.1 cm)	53 1/2" (135 cm)	35 3/4" (90 cm)	32 5/8" (83.7 cm)	29 1/2" (74 cm)	35 5/8" (90.5 cm)	43 3/4" (110.2 cm)
WRF5669WB 25.2 cu. ft.	70 3/8" (178.1 cm)	69 3/4" (174.8 cm)	49 1/2" (122.1 cm)	53 1/2" (135 cm)	35 3/4" (90 cm)	32 5/8" (83.7 cm)	29 1/2" (74 cm)	35 5/8" (90.5 cm)	43 3/4" (110.2 cm)
WRF5669WB 25.2 cu. ft.	70 3/8" (178.1 cm)	69 3/4" (174.8 cm)	49 1/2" (122.1 cm)	53 1/2" (135 cm)	35 3/4" (90 cm)	32 5/8" (83.7 cm)	29 1/2" (74 cm)	35 5/8" (90.5 cm)	43 3/4" (110.2 cm)
WRF5669WB 25.2 cu. ft.	70 3/8" (178.1 cm)	69 3/4" (174.8 cm)	49 1/2" (122.1 cm)	53 1/2" (135 cm)	35 3/4" (90 cm)	32 5/8" (83.7 cm)	29 1/2" (74 cm)	35 5/8" (90.5 cm)	43 3/4" (110.2 cm)
WRF5669WB 25.2 cu. ft.	70 3/8" (178.1 cm)	69 3/4" (174.8 cm)	49 1/2" (122.1 cm)	53 1/2" (135 cm)	35 3/4" (90 cm)	32 5/8" (83.7 cm)	29 1/2" (74 cm)	35 5/8" (90.5 cm)	43 3/4" (110.2 cm)
WRF5669WB 25.2 cu. ft.	70 3/8" (178.1 cm)	69 3/4" (174.8 cm)	49 1/2" (122.1 cm)	53 1/2" (135 cm)	35 3/4" (90 cm)	32 5/8" (83.7 cm)	29 1/2" (74 cm)	35 5/8" (90.5 cm)	43 3/4" (110.2 cm)
WRF5669WB 25.2 cu. ft.	70 3/8" (178.1 cm)	69 3/4" (174.8 cm)	49 1/2" (122.1 cm)	53 1/2" (135 cm)	35 3/4" (90 cm)	32 5/8" (83.7 cm)	29 1/2" (74 cm)	35 5/8" (90.5 cm)	43 3/4" (110.2 cm)
WRF5669WB 25.2 cu. ft.	70 3/8" (178.1 cm)	69 3/4" (174.8 cm)	49 1/2" (122.1 cm)	53 1/2" (135 cm)	35 3/4" (90 cm)	32 5/8" (83.7 cm)	29 1/2" (74 cm)	35 5/8" (90.5 cm)	43 3/4" (110.2 cm)
WRF5669WB 25.2 cu. ft.	70 3/8" (178.1 cm)	69 3/4" (174.8 cm)	49 1/2" (122.1 cm)	53 1/2" (135 cm)	35 3/4" (90 cm)	32 5/8" (83.7 cm)	29 1/2" (74 cm)	35 5/8" (90.5 cm)	43 3/4" (110.2 cm)
WRF5669WB 25.2 cu. ft.	70 3/8" (178.1 cm)	69 3/4" (174.8 cm)	49 1/2" (122.1 cm)	53 1/2" (135 cm)	35 3/4" (90 cm)	32 5/8" (83.7 cm)	29 1/2" (74 cm)	35 5/8" (90.5 cm)	43 3/4" (110.2 cm)
WRF5669WB 25.2 cu. ft.	70 3/8" (178.1 cm)	69 3/4" (174.8 cm)	49 1/2" (122.1 cm)	53 1/2" (135 cm)	35 3/4" (90 cm)	32 5/8" (83.7 cm)	29 1/2" (74 cm)	35 5/8" (90.5 cm)	43 3/4" (110.2 cm)
WRF5669WB 25.2 cu. ft.	70 3/8" (178.1 cm)	69 3/4" (174.8 cm)	49 1/2" (122.1 cm)	53 1/2" (135 cm)	35 3/4" (90 cm)	32 5/8" (83.7 cm)	29 1/2" (74 cm)	35 5/8" (90.5 cm)	43 3/4" (110.2 cm)
WRF5669WB 25.2 cu. ft.	70 3/8" (178.1 cm)	69 3/4" (174.8 cm)	49 1/2" (122.1 cm)	53 1/2" (135 cm)	35 3/4" (90 cm)	32 5/8" (83.7 cm)	29 1/2" (74 cm)	35 5/8" (90.5 cm)	43 3/4" (110.2 cm)
WRF5669WB 25.2 cu. ft.	70 3/8" (178.1 cm)	69 3/4" (174.8 cm)	49 1/2" (122.1 cm)	53 1/2" (135 cm)	35 3/4" (90 cm)	32 5/8" (83.7 cm)	29 1/2" (74 cm)	35 5/8" (90.5 cm)	43 3/4" (110.2 cm)
WRF5669WB 25.2 cu. ft.	70 3/8" (178.1 cm)	69 3/4" (174.8 cm)	49 1/2" (122.1 cm)	53 1/2" (135 cm)	35 3/4" (90 cm)	32 5/8" (83.7 cm)	29 1/2" (74 cm)	35 5/8" (90.5 cm)	43 3/4" (110.2 cm)
WRF5669WB 25.2 cu. ft.	70 3/8" (178.1 cm)	69 3/4" (174.8 cm)	49 1/2" (122.1 cm)	53 1/2" (135 cm)	35 3/4" (90 cm)	32 5/8" (83.7 cm)	29 1/2" (74 cm)	35 5/8" (90.5 cm)	43 3/4" (110.2 cm)
WRF5669WB 25.2 cu. ft.	70 3/8" (178.1 cm)	69 3/4" (174.8 cm)	49 1/2" (122.1 cm)	53 1/2" (135 cm)	35 3/4" (90 cm)	32 5/8" (83.7 cm)	29 1/2" (74 cm)	35 5/8" (90.5 cm)	43 3/4" (110.2 cm)
WRF5669WB 25.2 cu. ft.	70 3/8" (178.1 cm)	69 3/4" (174.8 cm)	49 1/2" (122.1 cm)	53 1/2" (135 cm)	35 3/4" (90 cm)	32 5/8" (83.7 cm)	29 1/2" (74 cm)	35 5/8" (90.5 cm)	43 3/4" (110.2 cm)
WRF5669WB 25.2 cu. ft.	70 3/8" (178.1 cm)	69 3/4" (174.8 cm)	49 1/2" (122.1 cm)	53 1/2" (135 cm)	35 3/4" (90 cm)	32 5/8" (83.7 cm)	29 1/2" (74 cm)	35 5/8" (90.5 cm)	43 3/4" (110.2 cm)
WRF5669WB 25.2 cu. ft.	70 3/8" (178.1 cm)	69 3/4" (174.8 cm)	49 1/2" (122.1 cm)	53 1/2" (135 cm)	35 3/4" (90 cm)	32 5/8" (83.7 cm)	29 1/2" (74 cm)	35 5/8" (90.5 cm)	43 3/4" (110.2 cm)
WRF5669WB 25.2 cu. ft.	70 3/8" (178.1 cm)	69 3/4" (174.8 cm)	49 1/2" (122.1 cm)	53 1/2" (135 cm)	35 3/4" (90 cm)	32 5/8" (83.7 cm)	29 1/2" (74 cm)	35 5/8" (90.5 cm)	43 3/4" (110.2 cm)
WRF5669WB 25.2 cu. ft.	70 3/8" (178.1 cm)	69 3/4" (174.8 cm)	49 1/2" (122.1 cm)	53 1/2" (135 cm)	35 3/4" (90 cm)	32 5/8" (83.7 cm)	29 1/2" (74 cm)	35 5/8" (90.5 cm)	43 3/4" (110.2 cm)
WRF5669WB 25.2 cu. ft.	70 3/8" (178.1 cm)	69 3/4" (174.8 cm)	49 1/2" (122.1 cm)	53 1/2" (135 cm)	35 3/4" (90 cm)	32 5/8" (83.7 cm)	29 1/2" (74 cm)	35 5/8" (90.5 cm)	43 3/4" (110.2 cm)
WRF5669WB 25.2 cu. ft.	70 3/8" (178.1 cm)	69 3/4" (174.8 cm)	49 1/2" (122.1 cm)	53 1/2" (135 cm)	35 3/4" (90 cm)	32 5/8" (83.7 cm)	29 1/2" (74 cm)	35 5/8" (90.5 cm)	43 3/4" (110.2 cm)
WRF5669WB 25.2 cu. ft.	70 3/8" (178.1 cm)	69 3/4" (174.8 cm)	49 1/2" (122.1 cm)	53 1/2" (135 cm)	35 3/4" (90 cm)	32 5/8" (83.7 cm)	29 1/2" (74 cm)	35 5/8" (90.5 cm)	43 3/4" (110.2 cm)
WRF5669WB 25.2 cu. ft.	70 3/8" (178.1 cm)	69 3/4" (174.8 cm)	49 1/2" (122.1 cm)	53 1/2" (135 cm)	35 3/4" (90 cm)	32 5/8" (83.7 cm)	29 1/2" (74 cm)	35 5/8" (90.5 cm)	43 3/4" (110.2 cm)
WRF5669WB 25.2 cu. ft.	70 3/8" (178.1 cm)	69 3/4" (174.8 cm)	49 1/2" (122.1 cm)	53 1/2" (135 cm)	35 3/4" (90 cm)	32 5/8" (83.7 cm)	29 1/2" (74 cm)	35 5/8" (90.5 cm)	43 3/4" (110.2 cm)
WRF5669WB 25.2 cu. ft.	70 3/8" (178.1 cm)	69 3/4" (174.8 cm)	49 1/2" (122.1 cm)	53 1/2" (135 cm)	35 3/4" (90 cm)	32 5/8" (83.7 cm)	29 1/2" (74 cm)	35 5/8" (90.5 cm)	43 3/4" (110.2 cm)
WRF5669WB 25.2 cu. ft.	70 3/8" (178.1 cm)	69 3/4" (174.8 cm)	49 1/2" (122.1 cm)	53 1/2" (135 cm)	35 3/4" (90 cm)	32 5/8" (83.7 cm)	29 1/2" (74 cm)	35 5/8" (90.5 cm)	43 3/4" (110.2 cm)
WRF5669WB 25.2 cu. ft.	70 3/8" (178.1 cm)	69 3/4" (174.8 cm)	49 1/2" (122.1 cm)	53 1/2" (135 cm)	35 3/4" (90 cm)	32 5/8" (83.7 cm)	29 1/2" (74 cm)	35 5/8" (90.5 cm)	43 3/4" (110.2 cm)
WRF5669WB 25.2 cu. ft.	70 3/8" (178.1 cm)	69 3/4" (174.8 cm)	49 1/2" (122.1 cm)	53 1/2" (135 cm)	35 3/4" (90 cm)	32 5/8" (83.7 cm)	29 1/2" (74 cm)	35 5/8" (90.5 cm)	43 3/4" (110.2 cm)
WRF5669WB 25.2 cu. ft.	70 3/8" (178.1 cm)	69 3/4" (174.8 cm)	49 1/2" (122.1 cm)	53 1/2" (135 cm)	35 3/4" (90 cm)	32 5/8" (83.7 cm)	29 1/2" (74 cm)	35 5/8" (90.5 cm)	43 3/4" (110.2 cm)
WRF5669WB 25.2 cu. ft.	70 3/8" (178.1 cm)	69 3/4" (174.8 cm)	49 1/2" (122.1 cm)	53 1/2" (135 cm)	35 3/4" (90 cm)	32 5/8" (83.7 cm)	29 1/2" (74 cm)	35 5/8" (90.5 cm)	43 3/4" (110.2 cm)
WRF5669WB 25.2 cu. ft.	70 3/8" (178.1 cm)	69 3/4" (174.8 cm)	49 1/2" (122.1 cm)	53 1/2" (135 cm)	35 3/4" (90 cm)	32 5/8" (83.7 cm)	29 1/2" (74 cm)	35 5/8" (90.5 cm)	43 3/4" (110.2 cm)
WRF5669WB 25.2 cu. ft.	70 3/8" (178.1 cm)	69 3/4" (174.8 cm)	49 1/2" (122.1 cm)	53 1/2" (135 cm)	35 3/4" (90 cm)	32 5/8" (83.7 cm)	29 1/2" (74 cm)	35 5/8" (90.5 cm)	43 3/4" (110.2 cm)
WRF5669WB 25.2 cu. ft.	70 3/8" (178.1 cm)	69 3/4" (174.8 cm)	49 1/2" (122.1 cm)	53 1/2" (135 cm)	35 3/4" (90 cm)	32 5/8" (83.7 cm)	29 1/2" (74 cm)	35 5/8" (90.5 cm)	43 3/4" (110.2 cm)
WRF5669WB 25.2 cu. ft.	70 3/8" (178.1 cm)	69 3/4" (174.8 cm)	49 1/2" (122.1 cm)	53 1/2" (135 cm)	35 3/4" (90 cm)	32 5/8" (83.7 cm)	29 1/2" (74 cm)	35 5/8" (90.5 cm)	43 3/4" (110.2 cm)
WRF5669WB 25.2 cu. ft.	70 3/8" (178.1 cm)	69 3/4" (174.8 cm)	49 1/2" (122.1 cm)	53 1/2" (135 cm)	35 3/4" (90 cm)	32 5/8" (83.7 cm)	29 1/2" (74 cm)	35 5/8" (90.5 cm)	43 3/4" (110.2 cm)
WRF5669WB 25.2 cu. ft.	70 3/8" (178.1 cm)	69 3/4" (174.8 cm)	49 1/2" (122.1 cm)	53 1/2" (135 cm)	35 3/4" (90 cm)	32 5/8" (83.7 cm)	29 1/2" (74 cm)	35 5/8" (90.5 cm)	43 3/4" (110.2 cm)
WRF5669WB 25.2 cu. ft.	70 3/8" (178.1 cm)	69 3/4" (174.8 cm)	49 1/2" (122.1 cm)	53 1/2" (135 cm)	35 3/4" (90 cm)	32 5/8" (83.7 cm)	29 1/2" (74 cm)	35 5/8" (90.5 cm)	43 3/4" (110.2 cm)
WRF5669WB 25.2 cu. ft.	70 3/8" (178.1 cm)	69 3/4" (174.8 cm)	49 1/2" (122.1 cm)	53 1/2" (135 cm)	35 3/4" (90 cm)	32 5/8" (83.7 cm)	29 1/2" (74 cm)	35 5/8" (90.5 cm)	43 3/4" (110.2 cm)
WRF5669WB 25.2 cu. ft.	70 3/8" (178.1 cm)	69 3/4" (174.8 cm)	49 1/2" (122.1 cm)	53 1/2" (135 cm)	35 3/4" (90 cm)	32 5/8" (83.7 cm)	29 1/2" (74 cm)	35 5/8" (90.5 cm)	43 3/4" (110.2 cm)
WRF5669WB 25.2 cu. ft.	70 3/8" (178.1 cm)	69 3/4" (174.8 cm)	49 1/2" (122.1 cm)	53 1/2" (135 cm)	35 3/4" (90 cm)	32 5/8" (83.7 cm)	29 1/2" (74 cm)	35 5/8" (90.5 cm)	43 3/4" (110.2 cm)
WRF5669WB 25.2 cu. ft.	70 3/8" (178.1 cm)	69 3/4" (174.8 cm)	49 1/2" (122.1 cm)	53 1/2" (135 cm)	35 3/4" (90 cm)	32 5/8" (83.7 cm)	29 1/2" (74 cm)	35 5/8" (90.5 cm)	43 3/4" (110.2 cm)
WRF5669WB 25.2 cu. ft.	70 3/8" (178.1 cm)	69 3/4" (174.8 cm)	49 1/2" (122.1 cm)	53 1/2" (135 cm)	35 3/4" (90 cm)	32 5/8" (83.7 cm)	29 1/2" (74 cm)	35 5/8" (90.5 cm)	43 3/4" (110.2 cm)
WRF5669WB 25.2 cu. ft.	70 3/8" (178.1 cm)	69 3/4" (174.8 cm)	49 1/2" (122.1 cm)	53 1/2" (135 cm)	35 3/4" (90 cm)	32 5/8" (83.7 cm)	29 1/2" (74 cm)	35 5/8" (90.5 cm)	43 3/4" (110.2 cm)
WRF5669WB 25.2 cu. ft.	70 3/8" (178.1 cm)	69 3/4" (174.8 cm)	49 1/2" (122.1 cm)	53 1/2" (135 cm)	35 3/4" (90 cm)	32 5/8" (83.7 cm)	29 1/2" (74 cm)	35 5/8" (90.5 cm)	43 3/4" (110.2 cm)
WRF5669WB 25.2 cu. ft.	70 3/8" (178.1 cm)	69 3/4" (174.8 cm)	49 1/2" (122.1 cm)	53 1/2" (135 cm)	35 3/4" (90 cm)	32 5/8" (83.7 cm)	29 1/2" (74 cm)	35 5/8" (90.5 cm)	43 3/4" (110.2 cm)
WRF5669WB 25.2 cu. ft.	70 3/8" (178.1 cm)	69 3/4" (174.8 cm)	49 1/2" (122.1 cm)	53 1/2" (135 cm)	35 3/4" (90 cm)	32 5/8" (83.7 cm)	29 1/2" (74 cm)	35 5/8" (90.5 cm)	43 3/4" (110.2 cm)
WRF5669WB 25.2 cu. ft.	70 3/8" (178.1 cm)	69 3/4" (174.8 cm)	49 1/2" (122.1 cm)	53 1/2" (135 cm)	35 3/4" (90 cm)	32 5/8" (83.7 cm)	29 1/2" (74 cm)	35 5/8" (90.5 cm)	43 3/4" (110.2 cm)
WRF5669WB 25.2 cu. ft.	70 3/8" (178.1 cm)	69 3/4" (174.8 cm)	49 1/2" (122.1 cm)	53 1/2" (135 cm)	35 3/4" (90 cm)	32 5/8" (83.7 cm)	29 1/2" (74 cm)	35 5/8" (90.5 cm)	43 3/4" (110.2 cm)
WRF5669WB 25.2 cu. ft.	70 3/8" (178.1 cm)	69 3/4" (174.8 cm)	49 1/2" (122.1 cm)	53 1/2" (135 cm)	35 3/4" (90 cm)	32 5/8" (83.7 cm)	29 1/2" (74 cm)		

ZANCOR HOMES COLOUR CHART

CABINETRY / COUNTERTOPS						
	DOOR STYLE	HARDWARE	COUNTERTOP	EDGE		
Kitchen	UPG (1) NIKI 400 SERIES PVC -WHITE	H800BC	AUTUMN CARNIVAL-1877K-52	STD		
Island	UPG (1) NIKI 400 SERIES PVC -WHITE	H800BC	AUTUMN CARNIVAL-1877K-52	STD		
Master Ensuite	STD 300 SERIES PVC-WHITE ✓	H500C	ELEMENTAL CONCRETE-8830-58	STD		
Main	STD MOSAIC OAK TIMER GREY ✓	H500C	PEARL SOAPSTONE-4886-38	STD		
TILES		INSERTS	THRESHOLDS			
Main Foyer	GRECO IVORY 13 X 13 ✓					
Powder Room	GRECO IVORY 13 X 13 ✓					
Kitchen Floor	GRECO IVORY 13 X 13 ✓					
Breakfast Floor	GRECO IVORY 13 X 13 ✓					
Laundry 2nd floor	NEW ALBION 13X 13 ✓					
Mstr Ensuite Floor	MALENA ICE 13 X 13 ✓					
Mstr Ensuite Shower	C & D SILVER BRIGHT GREY 4" X16" ✓	BIANCO CARRARA				
Master Shower Floor	WHITE 2X 2 ✓					
Master Shower Jamb	BIANCO CARRARA ✓					
Main Bath Floor	NEW ALBION 13 X 13 ✓	BIANCO CARRARA				
Main Bath Tub Wall	NEW ALBION 8X10 ✓					
HARDWOOD / CARPET						
GREAT ROOM	LAMINATE LEXINGTON BUTTER RUM OAK TL-21007					
Kitchen *(Waiver)	N/A					
Main Foyer *(Waiver)	N/A					
Upper Hall	LAMINATE LEXINGTON BUTTER RUM OAK TL-21007					
Master Bedroom	(STD) OPENING NIGHT COLLECTION CARPET - T04					
Bedroom 2	(STD) OPENING NIGHT COLLECTION CARPET - T04					
Bedroom 3	(STD) OPENING NIGHT COLLECTION CARPET - T04					
Carpet Underpad	STANDARD					
FIREPLACES						
LOCATION	N/A	Opt. Surround	N/A	MANTLE	N/A	
LOCATION		Opt. Surround		MANTLE		
MIRRORS & ACCESSORIES			PLASTER MOULDING			
Mirrors	YES	Opt. Crown Moulding	NO			
Bathroom Accessories	DELETE ALL ACCESSORIES	Location	NO			
Purchaser has reviewed the colour chart				SITE & LOT		
FOR TRADE USE				PINE RIVER SOUTH	LOT 142L	

Any upgrades in the colour chart must be accompanied with a PES. It is the responsibility of all Trades to inform the builder of any discrepancies on sketches, PES and/or colour charts PRIOR to installation.

*** PAGE 1 OF 2 ***

Purchaser Initial  Vendor 

STAIRS, RAILING & PICKETS & STAIR STAIN



ZANACOR
HOMES