



CONSTRUCTION SUMMARY

Belle Aire Shores - Zancor Homes (Innisfil) Ltd.

PURCHASER: *INVESTOR*

TEL: RES: 416-400-6050

LOT / PHASE	HOUSE TYPE	PRINT DATE
128 / 1	GALLEY (36-05) ELEV B	28-Jun-17

Ref#	Quantity	Description	Approved	Notes
2424	BONUS:	Granite kitchen countertops with undermount sink 3 Piece stainless steel appliances with white top loading washer and dryer Stainless steel under cabinet hood fan Extended uppers in kitchen (39-1/2") BBQ Gas line	28Apr17	
2425	BONUS:	9ft main floor ceilings, 8ft ceilings on second floor 3-1/4 inch by 3/4 inch natural prefinished engineered hardwood on main floor in non-tiled areas, excludes bedrooms Natural finished oak stair	28Apr17	
2426		SMOOTH CEILINGS ON MAIN FLOOR, UPPER HALL & MASTER BEDROOM	12Jun17	
2427		ELECTRICAL - LED POTLIGHTS (4) IN KITCHEN ON SEP SWITCH, STD LIGHT TO BE OVER ISLAND (6) IN GREAT ROOM ON SEP SWITCH, STD TO REMAIN (7) IN DINING ROOM ON SEP SWITCH, STD TO REMAIN (2) IN FOYER ON SAME SWITCH AS STD LIGHT	12Jun17	
2428		FIREPLACE IN GREAT ROOM WITH STANDARD MANTLE **INCLUDES BUMP OUT FOUNDATION, IF POSSIBLE **IF SETBACKS DONT ALLOW FOR BUMP, INSTALL FIREPLACE INTO THE ROOM	12Jun17	
2429		8 FOOT DOORS ON MAIN FLOOR **INCLUDES GARAGE MAN DOOR	12Jun17	
2430		6.00 - LARGER BASEMENT WINDOWS 30 X 24	12Jun17	
2431		FRAMELESS GLASS SHOWER IN MASTER ENSUITE	12Jun17	
4135		CABINETRY - KITCHEN UPGRADE 2 **UPPERS AND LOWERS DIFFERENT COLOURS	28Jun17	
4136		CABINETRY - KITCHEN DEEP UPPERS WITH CABLES	28Jun17	
4137		CABINETRY - KITCHEN POTS & PANS DRAWERS	28Jun17	
4138		CABINETRY - KITCHEN 8 CM RISER	28Jun17	
4139		CABINETRY - KITCHEN HIDDEN LIGHT VALANCE	28Jun17	
4140		CABINETRY - LAUNDRY UPPERS AND LOWERS INCLUDING AROUND TUB	28Jun17	
4141		CABINETRY - MASTER ENSUITE & MAIN BATH UPGRADE 2	28Jun17	
4142		CABINETRY - MASTER ENSUITE BANK OF DRAWERS	28Jun17	
4143		TILES - UPGRADE 6 FOYER, POWDER, SIDE HALL	28Jun17	
4144		TILES - MASTER ENSUITE FLOOR - UPGRADE 5 MASTER ENSUITE SHOWER WALLS - UPGRADE 4 MASTER ENSUITE SHOWER JAMB	28Jun17	
4145		HARDWOOD - MAIN FLOOR IN STANDARD AREAS - UPGRADE 5	28Jun17	
4146		HARDWOOD - UPPER HALL IN LIEU OF CARPET - UPGRADE 5	28Jun17	
4147		HARDWOOD - KITCHEN AND BREAKFAST IN LIEU OF TILE - UPGRADE 5	28Jun17	



CONSTRUCTION SUMMARY

Belle Aire Shores - Zancor Homes (Innisfil) Ltd.

PURCHASER: *Inventory*

TEL: RES: 416-400-6050

LOT / PHASE	HOUSE TYPE	PRINT DATE
128 / 1	GALLEY (36-05) ELEV B	28-Jun-17

Ref#	Quantity	Description	Approved	Notes
4148		COUNTERTOP - KITCHEN UPGRADE 4	28Jun17	
4149		COUNTERTOP - MASTER ENSUITE - UPGRADE 1 **INCLUDES RECTANGULAR UNDERMOUNT SINKS	28Jun17	
4150		TILES - KITCHEN BACKPLASH **ABOVE STOVE AND BEHIND CHIMNEY ONLY	28Jun17	
4151		MIRROR - KITCHEN BACKPLSAH **SMOKED MIRROR (GREY TINT) **NOT BEHIND STOVE	28Jun17	
4152		TILES - MAIN BATH UPGRADE 5 ON FLOOR UPGRADE 1 ON WALL	28Jun17	
4153		PLUMBING - KITCHEN FAUCET - MOEN ETCH S72608 BRUSHED	28Jun17	
4154		ELECTRICAL - KITCHEN - LED STRIP LIGHTING	28Jun17	
4155		CABINETS - KITCHEN - DELETE UPPEERS ABOVE STOVE FOR CHIMNEY HOOD FAN **CENTRE VENT TO ACCOMODATE	28Jun17	
4156		TRIM - UPGRADE 1	28Jun17	
4157		RAILINGS - METAL - ALL PLAIN	28Jun17	
4158		CABINETRY - KITCHEN UPGRADE HANDLES	28Jun17	
4159		CABINETRY - SOFT CLOSE DOORS AND DRAWERS IN KITCHEN	28Jun17	
4160		PLUMBING - KITCHENSINK - BLANCO PRECIS US 401681 (METALLIC GREY)	28Jun17	
4161		PLUMBING - MASTER ENSUITE & MAIN - MOEN METHOD SINK FAUCETS 6810	28Jun17	
4162		PLUMGING MASTER ENSUITE - MOEN METHOD TUB/SHOWER WITH HANDHELD AND SLIDE BAR 4 PIECE ROMAN TUB FAUCET	28Jun17	
4163		COUNTERTOP - MAIN BATH UPGRADE 1 **INCLUDES RECTANGLE UNDERMOUNT	28Jun17	
4164		DELETE CERAMIC ACCESSORIES **INSTALL MOEN METHOD ACCESSORIES IN ALL BATHROOMS	28Jun17	
4165		APPLIANCES UPGRADE TO STAINLESS STEEL COUNTERTDEPTH FRIDGE, STOVE, WHIRLPOOL DISHWASHER, GLASS CHIMNEY HOOD & STANDARD WHITE WASHER AND DRYER	28Jun17	

ZANCOR HOMES COLOUR CHART

CABINETRY / COUNTERTOPS						
	DOOR STYLE	HARDWARE	COUNTERTOP	EDGE		
Kitchen UPPERS	EURO - PIANOVO MATTE		ABSOLUTE BLANC (4)	C		
Kitchen LOWERS & FRIDGE	EUR - OLMO CARISMO		ABSOLUTE BLANC (4)	C		
Kitchen Island	EUR - OLMO CARISMO		ABSOLUTE BLANC (4)	C		
Kitchen DOOR HANDLES	DOOR HANDLES - TAB PULL	↗				
Kitchen DRAWER KNOBS	DRAWER KNOBS - K1700BC	↗				
Master Ensuite	EURO - HIGH GLOSS WHITE	↗	K-STONE BLACK (1)	H		
Main	EURO - HIGH GLOSS WHITE	↗	K-STONE BLACK (1)	H		
Twin	N/A					
Powder Room	N/A					
Laundry	SLAB PVC - WHITE		WHITE 949-58			
TILES				INSERTS THRESHOLDS		
Main Foyer	ALL OVER SERIES WHITE 24 X 24 (6)					
Powder Room	ALL OVER SERIES WHITE 24 X 24 (6)					
SIDE HALL	ALL OVER SERIES WHITE 24 X 24 (6)					
Main Hall						
Kitchen Floor	HARDWOOD					
Breakfast Floor	HARDWOOD					
Kitchen Bk.Splash	SMOKED/TINTED MIRROR (GREY IN COLOUR) *NOT BEHIND STOVE					
Kitchen Bk.Splash STOVE	CRISTALLO GLASS TEAL BLUE 2 X 12 **STACKED (ABOVE STOVE ONLY & BEHIND CHIMNEY)					
Laundry						
Mstr Ensuite Floor	ROMA STATUARIO 12 X 24 STACKED (5)					
Mstr Ens Shower	LUMINA WHITE MATTE 10 X 30					
Master Shower Floor	BIANCO CARRARA 2 X 2 MARBLE					
Master Shower Jamb	WHITE QTZ					
Main Bath Floor	ROMA STATUARIO 12 X 24 STACKED (5)					
Main Bath Tub Wall	TWILL WHITE 8 X 10 (1)					
Twin Bath Floor	N/A					
Twin Ensuite Tub Wall	N/A					
HARDWOOD / CARPET						
Living Room		N/A				
Dining Room		VINTAGE MAPLE - 5" ARIES (5)				
Family/Great Room		VINTAGE MAPLE - 5" ARIES (5)				
Den/Study/parlour/Library		N/A				
Kitchen *(Waiver)		N/A				
Main Foyer *(Waiver)		N/A				
Main Hall		VINTAGE MAPLE - 5" ARIES (5)				
Upper Hall		VINTAGE MAPLE - 5" ARIES (5)				
Master Bedroom		OPENING NIGHT - COLOUR T20				
Bedroom 2		OPENING NIGHT - COLOUR T20				
Bedroom 3		OPENING NIGHT - COLOUR T20				
Bedroom 4		OPENING NIGHT - COLOUR T20				
Carpet Underpad		STANDARD				
Basement Foyer		N/A				
FIREPLACES						
LOCATION	GREAT ROOM	Opt. Surround	MANTLE	NF8		
LOCATION		Opt. Surround	MANTLE			
MIRRORS & ACCESSORIES			PLASTER MOULDING			
Mirrors	YES	Opt. Crown Moulding		N/A		
Bathroom Accessories	MOEN UPGRADE	location		N/A		
Purchaser has reviewed the colour chart				SITE & LOT		
FOR TRADE USE				INNISFIL 128		
Any upgrades in the colour chart must be accompanied with a PES. It is the responsibility of all Trades to inform the builder of any discrepancies on sketches, PES and/or colour charts PRIOR to installation.						
** PAGE 1 OF 2 **			Purchaser Initial	Vendor		

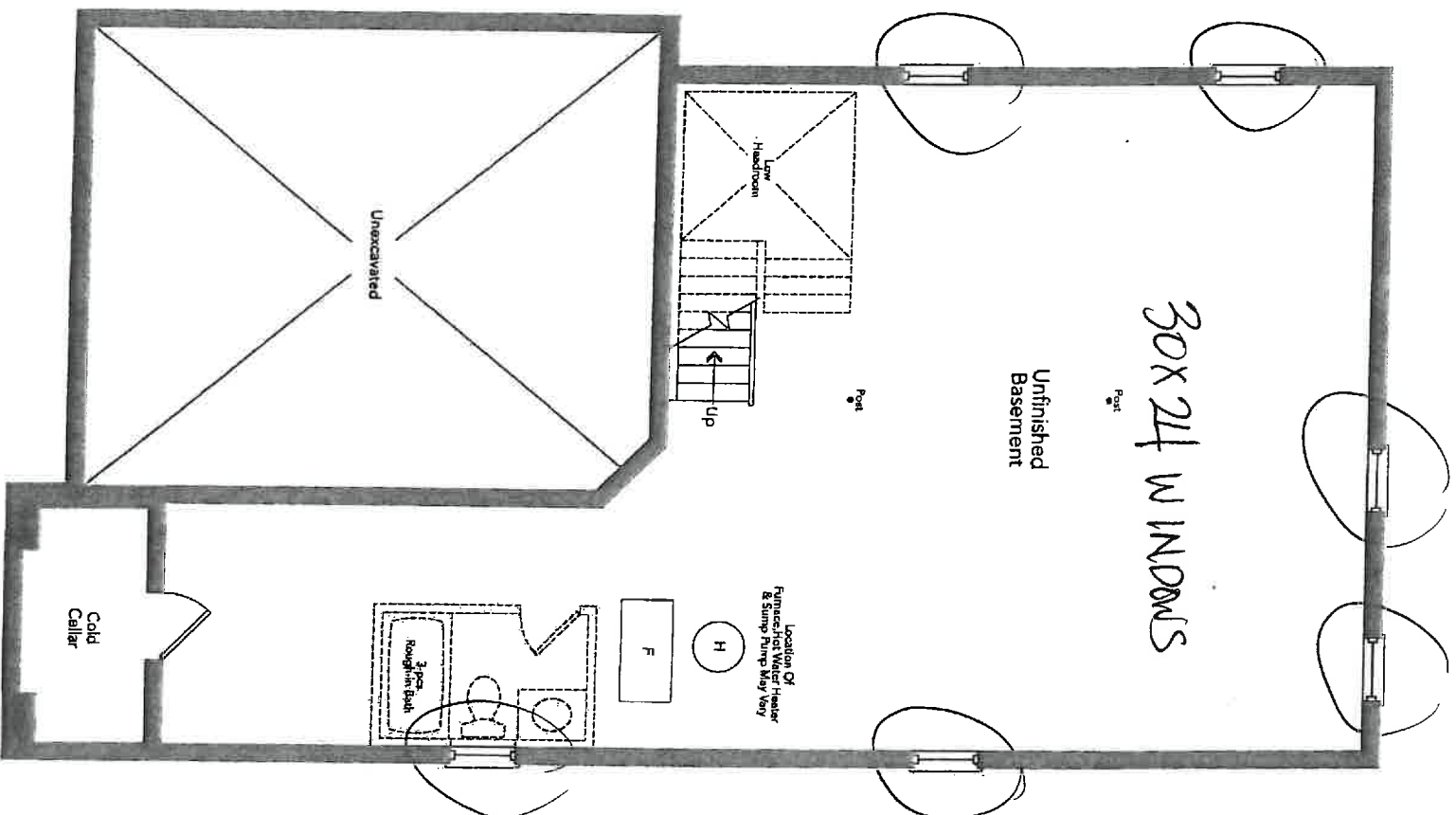
ZANCOR HOMES COLOUR CHART

STAIRS, RAILING & PICKETS & STAIR STAIN			
Stair Stain / Species:	STAIN TO MATCH HARDWOOD AS CLOSE AS POSSIBLE		
White Paint Req'd	N/A		
Main to 2nd Railing Details:	METAL - BLACK - ALL PLAIN		
Main to Basement Railing Details:	N/A		
TRIM			
Casing/Baseboards	UPGRADE 1 - STEP STYLE		
Interior Doors	STANDARD		
Interior Door Hardware	STANDARD		
Exterior Door Hardware	STANDARD		
PAINT			
Kitchen/Breakfast	BIRCH WHITE	Master Beds	BIRCH WHITE
Living Room	BIRCH WHITE	Bedroom 2	BIRCH WHITE
Dining Room	BIRCH WHITE	Bedroom 3	BIRCH WHITE
Family/Great room	BIRCH WHITE	Bedroom 4	BIRCH WHITE
Den/Study	BIRCH WHITE	Master Ens.	BIRCH WHITE
Main/Upper Hall	BIRCH WHITE	Main	BIRCH WHITE
Laundry	BIRCH WHITE	Twin	BIRCH WHITE
Powder Room	BIRCH WHITE	Basement	BIRCH WHITE
PLUMBING- UPGRADES TO BE DETAILED ON PES			
	FIXTURES	FAUCETS	NOTES
Kitchen	STANDARD	UPGRADE	BLANCO UNDERMOUNT / ARBOR FAUCET
Powder Room	STANDARD	STANDARD	
Master Ensuite	UPGRADE	STANDARD	RECTANGLE UNDERMOUNT SINKS
Main/Twin	STANDARD	STANDARD	
2nd Ensuite	N/A	N/A	
BASEMENT	N/A	N/A	
Other	N/A	N/A	
ZANCOR APPLIANCE REQUIREMENTS-UPGRADES TO BE DETAILED ON PES			
Appliance Package received in 'Schedule E'		YES / NO Package Name:	
	UPG (SEE PES)	DECLINED	NOTES
GAS LINE	N/A		
WATERLINE to Fridge	N/A		
Hood Fan Venting SIZE	6 INCH		
ELECTRICAL for Built-in Oven	N/A		
ELECTRICAL for Built-in Micro / OTR	YES		FOR OTR
ELECTRICAL for Gas Stove / Cooktop	N/A		
ELECTRICAL for Bar Fridge	N/A		
DISCLAIMER		INITIALS	
Colours of all materials are as close as possible to Builders selection but not necessarily identical due to dye lot variances in manufacturing/manufacturers. Due to construction progress some items may have been pre-selected or installed. In this event the Vendor's selection must be accepted by the purchaser			
Any changes to the colour chart after signing are subject to a \$5000 administration fee plus costs			
Purchaser has checked and acknowledged accuracy of colour and selections before signing.			
SITE:	INNISFIL	LOT: 128	
PURCHASER(S):	INVENTORY		
HOME #/CELL #			
EMAIL:			
DÉCOR NOTES			
FOR TRADE USE			
Any upgrades in the colour chart must be accompanied with a PES.		D décor Consultant Signature	
It is the responsibility of all Trades to inform the builder of any discrepancies on sketches, PES and/or colour charts PRIOR to installation.		Date	
*** PAGE 2 OF 2 ***		Vendor Signature	
		Date	

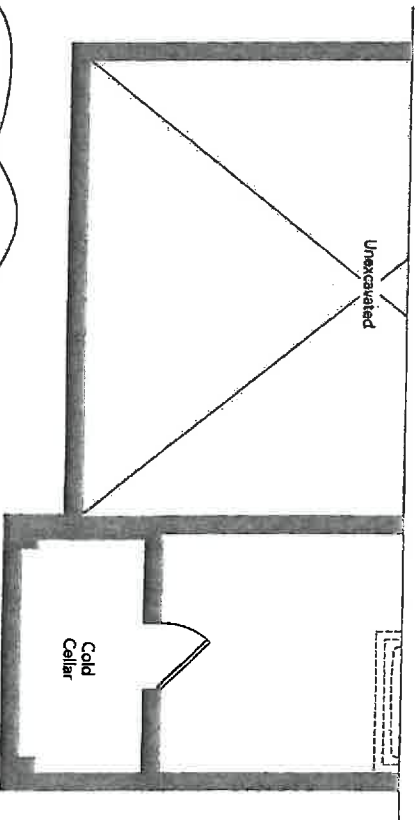


[Handwritten Signature]

JUN 20 2017



~~Basement~~
~~Elevation A~~



Partial Basement
Elevation B

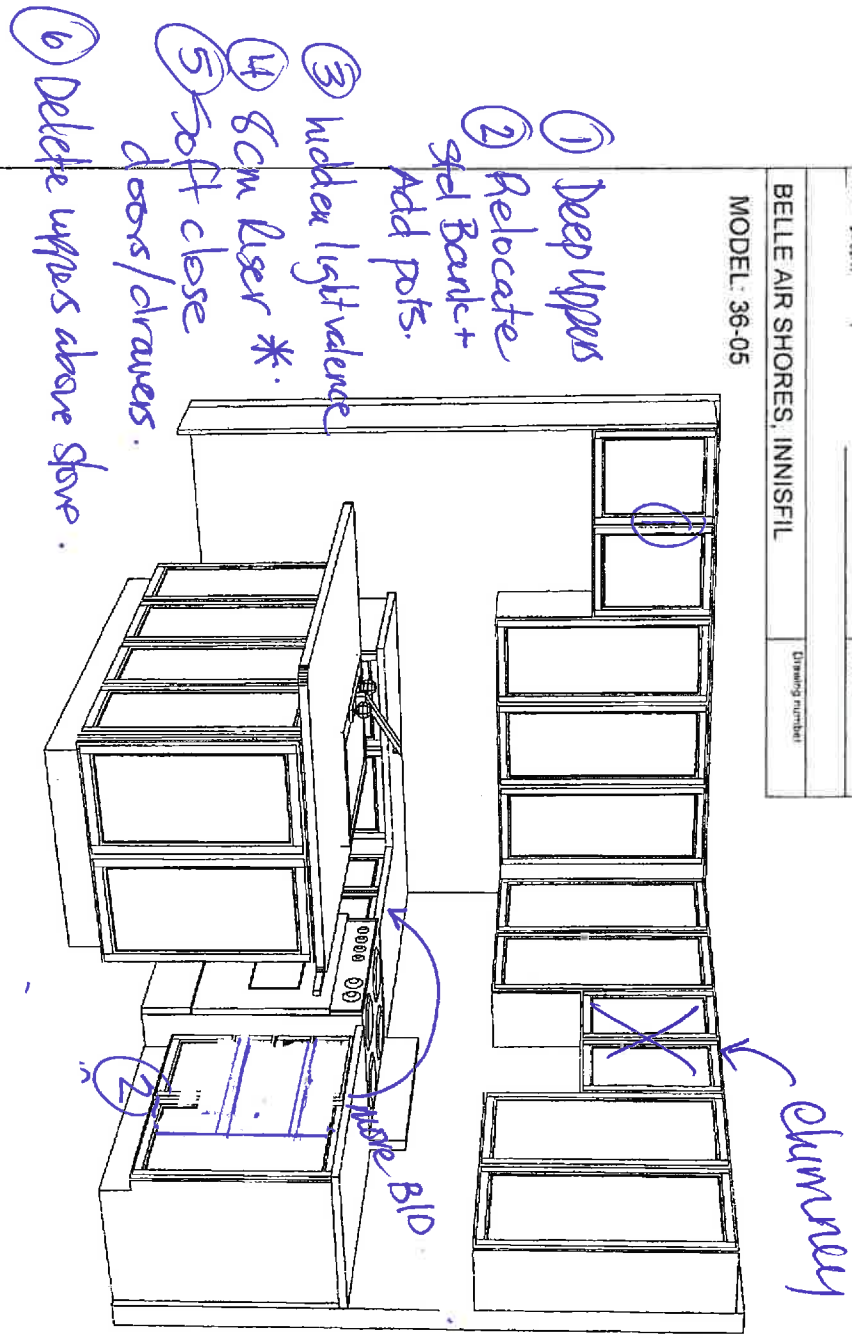
LOT 128
JUN 20 2017

GALLEY 36-05

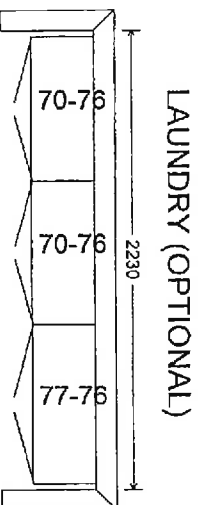
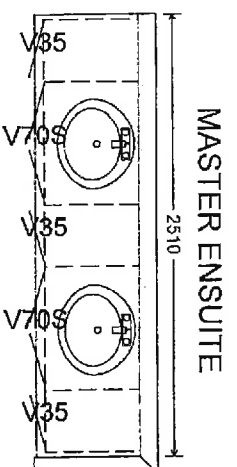
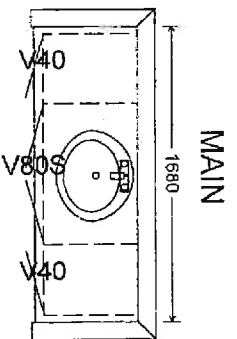
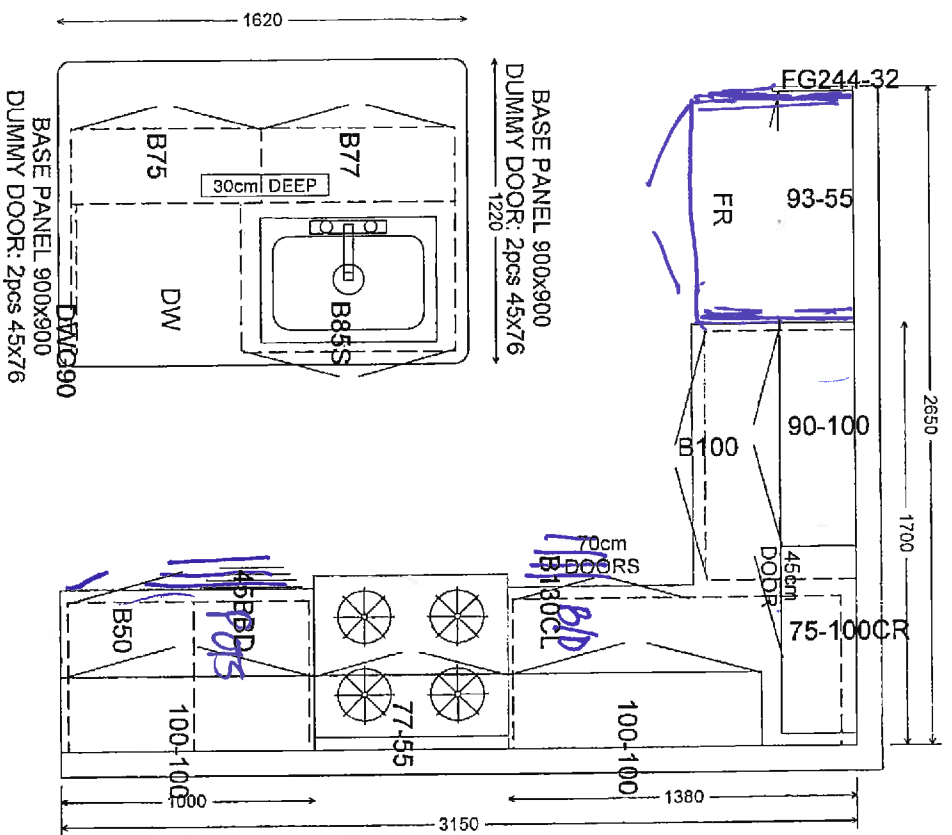
Handwritten signature/initials

New Image Kitchens Inc.			
Scale	Approved by	Drawn by: MCEB	
Date: 24/02/17		Revised	
BELLE AIR SHORES, INNISFIL		Drawing number:	

MODEL: 36-05



MODEL: 36-05



olympiatile+stone[®]

Stock Sizes - Nominal



4,800 x 29,8cm
(24 x 12") **Cristallo Product Guide**
KN/CR.TBL.0212.MT

Special Order
For information regarding
other sizes, colours and
finishes please contact us

Series: Cristallo Colour: Teal Blue Finish: Matte

Additional Options



COLOUR
RANGE



Teal Blue



Special Grey



Ivory



Beige



Taupe



Sage



Description

A comprehensive
collection of glass tiles
and mosaics in both
matte and glossy
finishes. Available in an
assortment of colours
that will be sure to
complement any decor.

Usage

Walls
Residential
Commercial
Residential and
commercial
walls.



Cristallo Product Guide

Wp5

2x12

Product Specification Sheet

BLANCO PRECIS U 2
SILGRANT®



BLANCO PRECIS U 2 Colour Finish Model No.

White reversible
401705

Truffe 401179

Metallic gray reversible
401681

Cinder 401415

Café 400581

Biscuit 401818

Anthracite 400580

WARRANTY

Limited Lifetime warranty

Code/Standards Compliance

BLANCO sinks and faucets are third-party tested and certified to CSA, cUPC, ANSI/ASME and NSF standards and listed by applicable certification bodies. For more information on individual product listings, contact our office or listing organization.

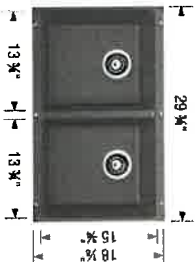
BLANCO CANADA
100 Corporation Drive
Brampton, ON L6S 6B5

Tel: 905 494 2400
Fax: 905 494 2425
www.blancocanada.com

Toll Free: 1 877 425 2626
Toll Free: 1 877 825 2626

© 2016 BLANCO CANADA

PRODUCT DIMENSIONS



FEATURES / SPECIFICATIONS

- Made in Canada and Germany
- SILGRANT® - natural granite composite material
- Exceptional resistance to heat, scratches and impact
- Repellent material – does not absorb any liquids, acids or stains
- Non-porous surface does not require use of any harsh chemicals
- Includes Hygienic+Plus surface protection formula against bacteria
- Rear-positioned and centred drain hole maximizes usable bowl and cabinet storage
- Virtually flat sink bottom prevents glassware from tipping over
- Limited Lifetime Warranty

DESIGN AND PLANNING TIPS

Cabinet Size: 33" (840 mm)
Bowl depth: 8" (205 mm) / 8" (205 mm)
Depending on cabinet construction, a different cabinet size may be required.
Consult the cabinet manufacturer.

Method™

Traditional | Transitional | Modern
*A modern blend of flat planes and curves
gives Method faucets and accessories an chic look.*

LOT 128
1NN



Single Handle Vessel Lav
Faucet with Lift Rod Drain
and Grid Drain Kit ^

Model 6810 / A2020



Single Handle
Lav Faucet
with Lift Rod Drain ^

Model 6810



Two Handle Adjustable Widespread
(8" - 16") Lav Faucet
with Lift Rod Drain

Model T6820 / 69000



Two Handle
Roman Tub Faucet

Model T986 / 4796

Tub Drain Half Kits Available**



Two Handle Roman Tub
with Hand Shower

Model T987 / 9796

Tub Drain Half Kits Available**

FINISH OPTIONS:



C BN

To order, combine the model number with one of these finish letter(s):
LifeShine® Brushed Nickel (BN).

To order Chrome (C) model, use model number only.

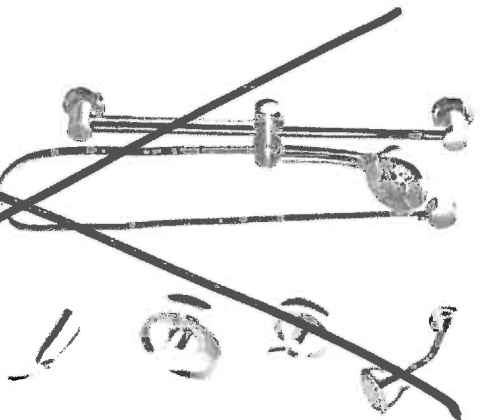
^ Deckplate included

** T90331 / 140680

Method™

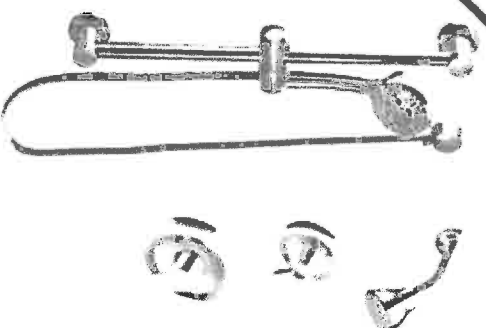
Traditional | Transitional | Modern
A modern blend of flat planes and curves
gives Method faucets and accessories an chic look.

128
144



**Posi-Temp® Tub/Shower Faucet
with 3 Function Transfer Valve/Trim
and Slide Bar with Hand Shower ***

Model T62803EP / 3372 / 128284 / T4171 /
62320 / 3669EP / A725

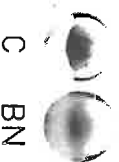


**Posi-Temp® Shower Only
with 3 Function Diverter Valve
and Slide Bar with Hand Shower ***

Model T62802EP / 3372 / T4171 / 62320 /
3669EP / A725

master

FINISH OPTIONS:



C BN

To order, combine the model number with one of these finish letter[s]:
LifeShine® Brushed Nickel (BN).
To order Chrome (C) model, use model number only.
* Please see vertical spa guide for installation #700106

Method™
Traditional | Transitional | Modern
A modern blend of flat planes and curves
gives Method faucets and accessories an chic look.

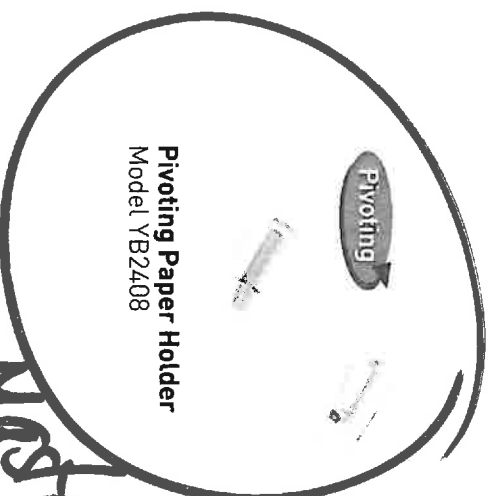
128
BN



Toilet Tank Lever
Model YB2401



Double Robe Hook
Model YB2403



Pivoting Paper Holder
Model YB2408

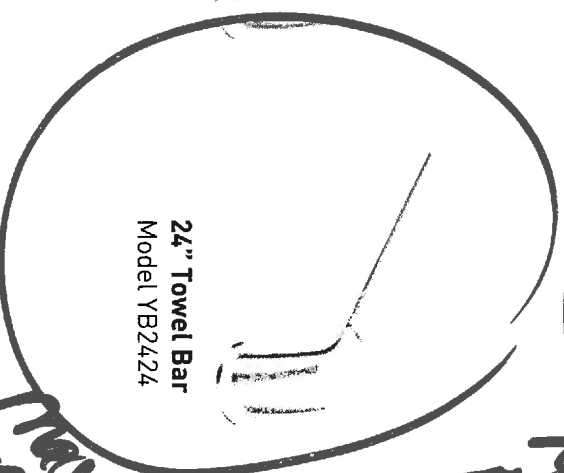
Brushed
Main
Paper



Mini Towel Bar
Model YB2486



18" Towel Bar
Model YB2418



24" Towel Bar
Model YB2424

Brushed
Main
Paper

FINISH OPTIONS:



CH BN

To order, combine the model number with one of these finish letter(s):
Chrome (CH) & LifeShine® Brushed Nickel (BN).

PROOFIT™
INSTALLATION SYSTEM



COAST Wholesale
APPLIANCES

COAST WHOLESALE APPLIANCES INC
#1 - 1748 CREDITSTONE ROAD, VAUGHAN, ON
L4K 5V8 *** TOLL FREE 1-888-745-0622
PH:(905)303-6909 FX:(905)856-5325



"Innovative Products for Builders, Designers & Home Owners"

Sold ZANCOR HOMES (INNISFIL) LTD.
To: (BELLE AIRE SHORES)
137 BOWES ROAD
CONCORD
ON L4K 1H3

Ship ZANCOR HOMES (INNISFIL) LTD.
To: (BELLE AIRE SHORES)
137 BOWES ROAD
CONCORD
ON L4K 1H3

SALES ORDER
QUOTATION

905-738-7010

Sales Representatives	P.O.#	Terms	Prov.Tax #	Customer #	Quote #
FB WAYNE W/18,7	LOT 151 BELLE AIRE SHO	NET 30 DAYS		GO481	1913881-01
	Shipping Location	Date Quoted	Date Required		Document Type
Quantity	WOODBRIDGE WHSE	01 JUN 17	15 JUN 17		SALES PROPOSAL
Quoted	Model / Description			Price	Extension
1	KRFC302ESS 36", COUNTER DEPTH REFRIGERATOR KITCHENAID AQUA LIFT ELECTRIC SS SLIDE-IN RANGE				
1	YKSEB900ESS FABER GLASSY 30" SS WALL HOOD 600 CFM				1
1	GLAS30SS600-B WHIRLPOOL PLASTIC TUB D/WASHER S/S 3 CYCLES,4 OPTIONS,13 SETTINGS				
1	WDF320PADS AMANA 4.0 CUFT TOP LOAD WASHER WHT				
1	NTW4516FW AMANA 6.5 CUFT DRYER 11 CYCLES,3 TEMP WHT, AUTO DRY				
1	YNED4655EW EZ FLO STAINLESS STEEL BRAIDED 6" WASHING MACHINE FILL HOSE				
1	48372 INSTALLATION HOOKUP INSTALLATION OF HOOD FAN				
1	INSTALLATION OF STND INSTALLATION OF STANDARD PACKAGE PACKAGE FREIGHT ALLOWANCE INCLUDED				
1	PFA				
11					
					SUBTC
					PST
					DEL/PL
					HST
					TOTAL

"Quote Valid for 15 Days from Quote Date"

Page: 1 of 1

Sales Copy

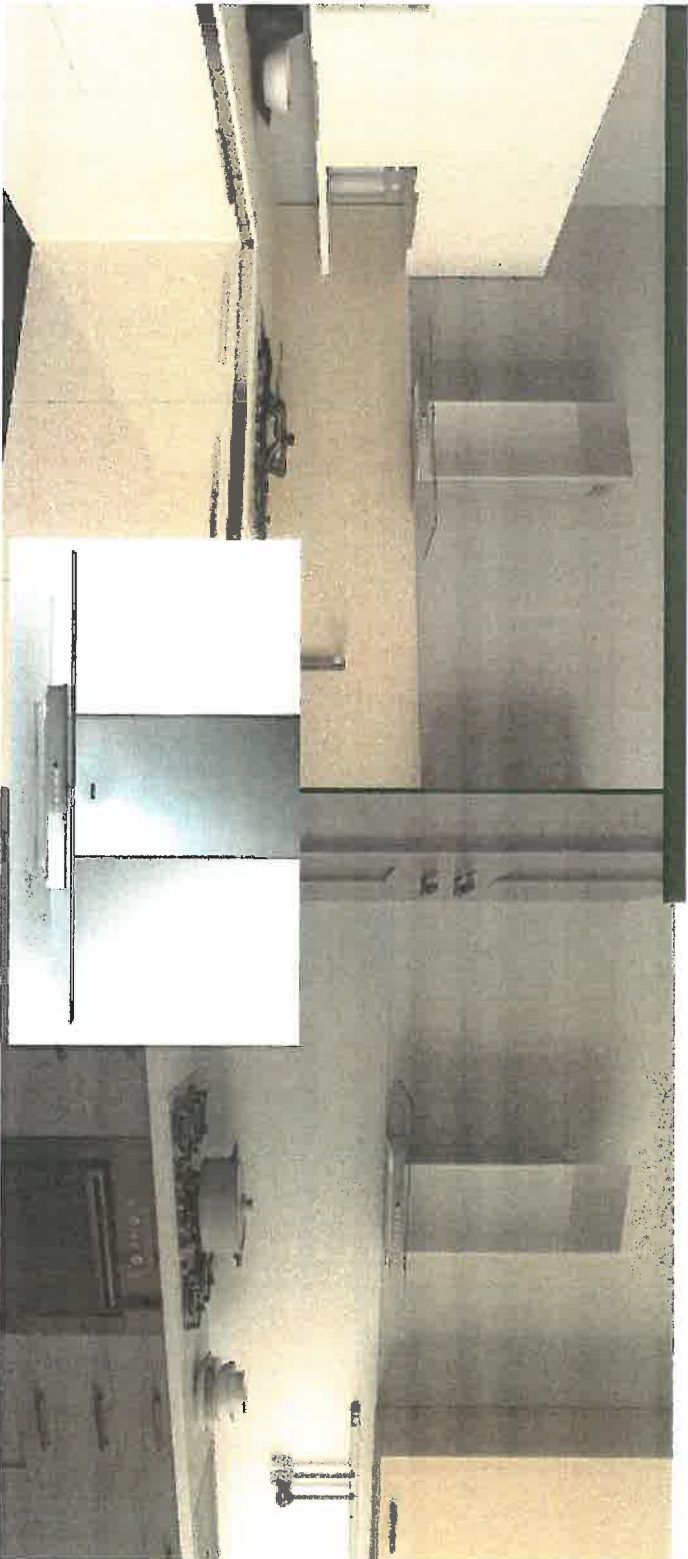
NOW 16 LOCATIONS TO SERVE YOU

www.coastappliances.com

GLASSY WALL RANGE HOOD



ADVANCED GLASS WALL HOOD WITH ADVANCED FEATURES. The new and improved Glassy by Faber features a stunning flat glass body with advanced electronic controls, an optional remote control and two level energy efficient LED lights. Available with a 600 or 300 cfm motors, the Glassy delivers your choice of performance level in a stylish and contemporary flat glass wall range hood.



AVAILABLE MODELS

Model #	Size / Color	Motor Class (CFM)	Sound Levels (sones)
GLAS30SS600-B	30" Stainless	600 CFM	2.8 - 7.5
GLAS36SS600-B	36" Stainless	600 CFM	2.8 - 7.5
GLAS30SS300-B	30" Stainless	300 CFM	2.5 - 5.0
GLAS36SS300-B	36" Stainless	300 CFM	2.5 - 5.0

LOT 128
1mm

KEY FEATURES



Backlit electronic controls
Backlit electronic controls with a White LED light to indicate the current speed and two level lighting



LED bulbs
Low consumption 1 watt LED bulbs with a dimmer light up your cooking but use very little energy

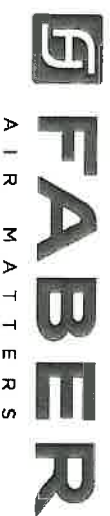


Remote Control (optional)
Control all features of the hood from the convenience of a wireless remote control (sold separately)



Ductless Chimney
An upper chimney with return air grates on the side is included. Just purchase the ductless kit to complete the ductless installation.

GLASSY WALL RANGE HOOD



SPECIFICATIONS

min. / max. ceiling height convertible to ductless / recirculating	8' 2" - 9' 3/16"
canopy depth / height	yes - kit sold separately 18 1/2" d / 11 1/16" h
high ceiling kit controls	yes - reaches up to 11' ceilings 4 speed electronic w/ white led
lighting	2 x 1 (w) led - two level
ducting top	6" round
grease filters	dishwasher safe mesh
10 minute intensive speed	yes
15 minute auto shut off	yes
ADA compliant power cord included	yes (with remote control purchase) yes
AC power	320 watts / 2.7 amps (600 cfm model)

PERFORMANCE (600 CFM Motor shown)

	SPEED	1	2	3	BOOST
CFM		150	350	450	560
Sones		2.8	4.3	6.0	7.5

ACCESSORIES

- # FILTER2 -
Charcoal Filter Kit

High quality charcoal filter for use when recirculating the air back into the kitchen. Filters out odor and should be replaced every 6 months
- # REMCTRL -
Remote Control

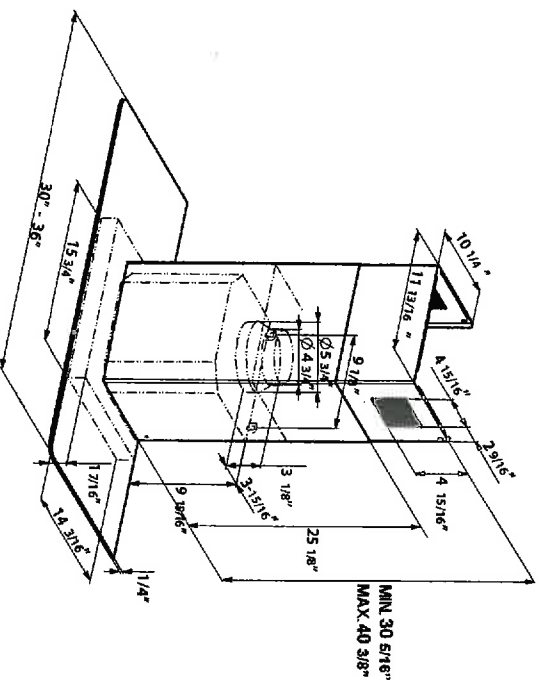
Control all features of the hood from the convenience of a wireless remote control
- # HIGH3 -
High Ceiling Kit

High ceiling kit replaces the upper chimney with a taller chimney to reach up to 10' 9 10/16"
- # WIREBOX -
Fixed Wiring Box

Replace the power cord with a hard wired box to power the range hood
- # DUCT4 -
Ductless Conversion Kit

To convert the Glassy to ductless, this kit includes charcoal filters and a diverter to send the air thru the side grates on the upper chimney.
- # MUDAMPER6 / MUDAMPER8 -
Universal Make-Up Air Damper

Satisfies make-up air requirements, this kit uses an air switch to activate the make-up air damper to open and bring fresh air into the home when the hood fan is on. It then closes tightly when the hood is off. The CFM level is not reduced with this accessory.



Lot 128
11/11/17



WARNING! Product specifications are subject to change without notification. Consult the installation instructions before you begin installing this range hood



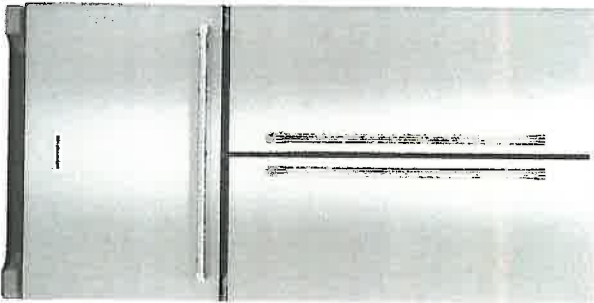
Rev: 6/16

2 Cabot Road Hudson, MA 01749 • TEL: (508) 358-5353 • E-Mail: info@faberonline.com www.faberonline.com

Imagined in Italy

JUN 20 2017

KitchenAid®



NEW

22 cu. ft. 36-Inch Width Counter Depth French Door Refrigerator with Interior Dispense

3.9

229 Reviews [Write a Review](#)

This 72-inch refrigerator is three inches taller than a standard counter-depth refrigerator. It fills the gap that can be left above many refrigerators, adding to its integrated appeal. A pull-out freezer drawer allows you to organize frozen items on three levels. And with the ExtendFresh™ Temperature Management System all of your ingredients will be held at the optimum temperature to maximize their flavor and texture.

AVAILABLE COLOR OPTIONS

☒ Stainless Steel [KRFC302ESS](#)

FEATURES

ExtendFresh™ Plus Temperature Management System

Ensures ingredients remain fresh for maximum taste and texture using a sensor-controlled system with a variable-capacity compressor. There is one thermostat in the freezer and one thermostat in the refrigerator.

Interior Water Dispenser

Provides easy access to filtered water and is conveniently located for one-hand operation.

Produce Preserver

Absorbs ethylene gas emitted by many fruits and vegetables, causing them to over-ripen. By removing ethylene, the produce preserver helps extend freshness.

Additional Features

Humidity Controlled Crispers

Provide a dedicated storage option with adjustable humidity levels to keep fresh food in an optimal environment.

Pull-Out Tri-Level Freezer Drawer

Features slide-out baskets with mats to help keep the freezer clean and organized.

LED Lighting

Illuminates the inside of the refrigerator and freezer giving for better visibility. Unlike incandescent bulbs, LED lights use less energy, are maintenance-free and never need to be replaced.

Max Cool

When selected, automatically adjusts the temperature in the refrigerator and freezer to the lowest setting when appropriate. This keeps the refrigerator at the ideal temperature when loading groceries, the doors are frequently opened or in higher room temperatures.

FreshChill™ Temperature-Controlled Full-Width Pantry

Lets you properly store everything from meats to produce with a manual temperature setting. It gives you total control over of the amount of cool air that enters the drawer.

SatinGlide® System

Uses space-efficient, under-mounted pans with rollers and glides for satisfyingly smooth operation. Star-K Certified

STAR-K KOSHER CERTIFICATION for use on the Jewish Sabbath and other religious holidays.

Automatic Ice Maker

Ensures a constant supply of ice on hand at all times for entertaining and everyday use.

Metallic Accents on Shelf Trim

Provide a touch of elegance and complement the high gloss interior finish of the refrigerator.

Metal Wine Rack

Provides a durable storage solution for up to four bottles of wine or 2-liter containers and can be removed for additional storage flexibility.

6/12/17

KitchenAid®
FOR THE WAY IT'S MADE.®

PRODUCT MODEL NUMBERS

KRFGC302E

Electrical: A 115 volt, 60 Hz, AC only 15- or 20-amp fused, grounded electrical supply is required. It is recommended that a separate circuit serving only your refrigerator and approved accessories be provided. Use an outlet that cannot be turned off by a switch. Do not use an extension cord.

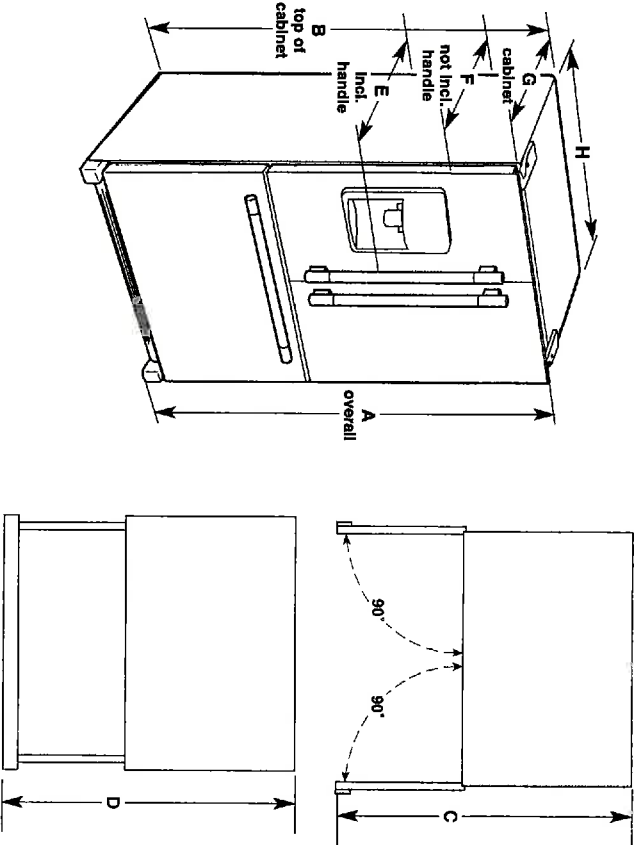
Water: A cold water supply with water pressure of between 35 and 120 psi (241 and 827 kPa) is required to operate the water dispenser and ice maker. If you have questions about your water pressure, call a licensed, qualified plumber.

Reverse Osmosis Water Supply:

IMPORTANT: The pressure of the water supply coming out of a reverse osmosis system going to the water inlet valve of the refrigerator needs to be between 35 and 120 psi (241 and 827 kPa).

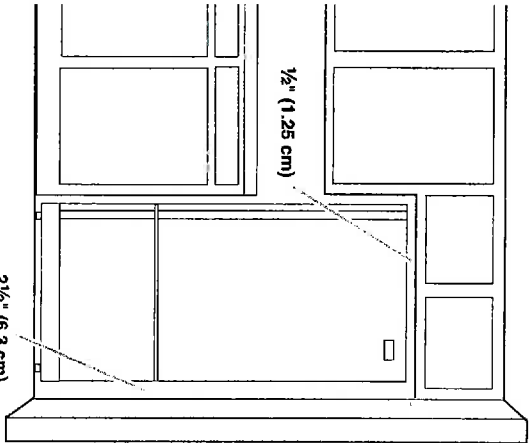
Bottom Mount Refrigerator

PRODUCT DIMENSIONS



Model Size	Height - Overall "A"	Height - Top of Cabinet "B"	Depth - Doors Open 90° "C"	Depth - Drawer Open "D"	Depth - With Handles "E"	Depth - Without Handles "F"	Depth - Cabinet Only "G"	Width - Cabinet "H"
21.9	72" (182.9 cm)	71 3/4" (181.3 cm)	44 1/8" (112.1 cm)	45 1/4" (114.9 cm)	30 1/4" (76.8 cm)	27 3/4" (70.5 cm)	24 5/8" (62.5 cm)	35 3/4" (90.8 cm)

LOCATION REQUIREMENTS



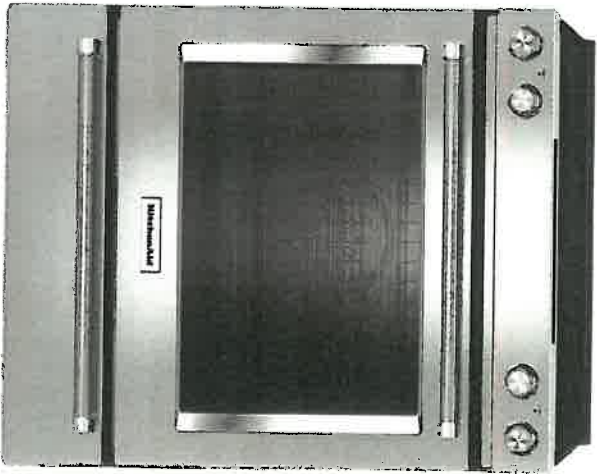
IMPORTANT: This refrigerator is designed for indoor, household use only.

To ensure proper ventilation for your refrigerator, allow for 1/2" (1.25 cm) of space on each side and at the top. Allow for 1" (2.54 cm) of space behind the refrigerator. If your refrigerator has an ice maker, allow extra space at the back for the water line connections. When installing your refrigerator next to a fixed wall, leave 2 1/2" (6.3 cm) minimum on the hinge side (some models require more) to allow for the door to swing open.

NOTE: This refrigerator is intended for use in a location where the temperature ranges from a minimum of 55°F (13°C) to a maximum of 110°F (43°C). The preferred room temperature range for optimum performance, which reduces electricity usage and provides superior cooling, is between 60°F (15°C) and 90°F (32°C). It is recommended that you do not install the refrigerator near a heat source, such as an oven or radiator.

JUN 20 2017

KitchenAid®



NEW

**KitchenAid® 30-Inch 5-Element Electric
Convection Front Control Range with
Baking Drawer**

2.5

26 Reviews [Write a Review](#)

This versatile electric range provides a Baking Drawer that adds more options to the oven. The separate compartment allows you to bake at a different temperature. This range also features Even-Heat™ True Convection, helping you achieve flawless cooking results. The unique bow-tie design and convection fan ensure the entire oven is heated to, and stays at, the perfect temperature. It also has a Wireless Probe that allows you to read internal food temperatures even when you're away from the kitchen.

AVAILABLE COLOR OPTIONS

☐ **Stainless Steel** * YKSEB900ESS

FEATURES

Baking Drawer

Adds more cooking options to the oven. The separate compartment allows you to keep warm, slow cook or bake at a different temperature and keep dishes

Even-Heat™ True Convection

Produces flawless results. The unique bow-tie design and convection fan ensure the inside of the entire oven is heated to, and stays at, the perfect temperature.

Wireless Probe

Lets cooks walk away from the oven without walking away from control. Our probe can easily be set to specific temperatures, and alerts you when the desired temperature has been reached. The easy-to-read monitor lets you attend to the rest of the meal, or anything else.

Additional Features

Steam Rack

Offers the ability to provide additional moisture to the inside of the oven, enhancing cooking results.

5 cooking elements including a warm zone

Provides five independent cooking surfaces that allow you to do more on your range. It features a triple cooking zone of 6, 9 and 12 inches, one 10 inch zone and two 6 inch cooking zones, plus a dedicated warming zone.

AquaLift®

Cleans your oven in less than an hour without odours and at a temperature below 200°F. This innovative system combines low heat with water to release baked-on spills.

7.1 cu ft total capacity

This electric freestanding range provides an extra-large cooking capacity in the oven for multiple dishes at once and gives you the flexibility of a separate temperature zone in the baking drawer.

EasyConvect™ Conversion System

Takes guesswork out of convection cooking by ensuring you can get exceptional results when experimenting with new or familiar recipes.

Fit Guarantee

Is our promise to flawlessly fit slide-in ranges designed for an existing cutout of 36" width, countertop depth of 24"-25", cabinet depth of 23"-24" and countertop height of 36".

Glass Touch Controls

Offer an intuitive, easy-to-use touch screen experience.

Side Trim Accessory Kit

This optional accessory kit will cover damaged countertops and unfinished edges from an old slide-in range to make them beautiful again. Trim pieces come in black, white and stainless to seamlessly match your new range.

128
101
11/28

JUN 20 2017