



CONSTRUCTION SUMMARY

The Village of Trillium Forest - Zancor North Inc.

PURCHASER: Inventory 129_4

TEL: RES.: 905-738-7010

LOT / PHASE	HOUSE TYPE	PRINT DATE
Block 129 Unit 4 / 3	The Sunshine (TH-02) Elev B End Opt Loft	19-Oct-17

Ref#	Quantity - Description	Approved	Notes
4392	ELECTRICAL - LED POTLIGHTS (4) IN MAIN HALL ON EXISTING SWITCH, DELETE STD LIGHT	04Aug17	
4393	ELECTRICAL - LED POTLIGHTS (2) IN MAIN BATH ON SAME SWITCH AS STD. LIGHT ABOVE VANITY	04Aug17	
4394	ELECTRICAL - LED POTLIGHTS (7) IN KITCHEN ON EXISTING SWITCH, DELETE STANDARD LIGHT	04Aug17	
4395	ELECTRICAL - LED POTLIGHTS (6) IN FAMILY ROOM ON EXISTING SWITCH, DELETE STD. LIGHT	04Aug17	
4396	ELECTRICAL - LED POTLIGHTS (2) IN MUD ROOM ON EXISTING SWITCH, DELETE STD	04Aug17	
4397	ELECTRICAL - LED POTLIGHTS (2) IN HALL IN FRONT OF STAIRS EXISTING SWITCH, DELETE STD.	04Aug17	
4398	ELECTRICAL - LED POTLIGHTS (4) IN MASTER BEDROOM ON SEP SWITCH, STD TO REMAIN	04Aug17	
4399	ELECTRICAL - LED POTLIGHTS (2) IN MASTER ENSUITE ON SAME SWITCH AS STANDARD LIGHT ABOVE VANITY	04Aug17	
4400	8 FOOT DOORS ON MAIN FLOOR (TOTAL 11)	04Aug17	
4401	SMOOTH CEILINGS THROUGHOUT (MAIN, LOFT & BASEMENT)	04Aug17	
4402	FRAMELESS GLASS SHOWER IN MASTER ENSUITE	04Aug17	
4403	GAS FIREPLACE 36" W/STANDARD MANTLE ** WILL COME INTO THE ROOM *RAISE 4"	04Aug17	
4404	WATERLINE TO FRIDGE	04Aug17	
4406	ELECTRICAL - (9) EXTERIOR POTLIGHTS , (LOCATION AS PER SKETCH)	04Aug17	
4407	ELECTRICAL - LIGHT TO BE IN CENTER CEILING OF PORTICO IN LIEU OF WALL	04Aug17	
4918	HARDWOOD - UPG(4) ON MAIN FLOOR - FAMILY ROOM, HALL AT STAIRS, STAIR LANDINGS, MASTER BED AND BED 2 IN LIEU OF STD LAMINATE	14Sep17	
4919	CARPET UPG (1) LOFT HALL, LOFT BEDROOMS AND BASEMENT REC ROOM	14Sep17	
4920	TILE - UPG (4) MAIN FOYER, KITCHEN BREAKFAST, MUD, LAUNDRY	14Sep17	
4941	TILE - MASTER ENSUITE FLOOR UPG (4) TILE - MASTER ENSUITE SHOWER WALL & SHOWER FLOOR UPG (3)	14Sep17	
4942	CABINETS - EXTENDED UPPEERS TO 39-1/2" HIGH	14Sep17	
4943	CABINETS - ADD 6" RISER TO UPPER CABINETS IN KITCHEN	14Sep17	
4945	KITCHEN CABINETS UPG (1)	14Sep17	
4946	CABINETS - ADD DEEP UPPEERS ABOVE FRIDGE WITH GABLES	14Sep17	
4947	CABINETRY - PLATE WITH STRAIGHT EDGE AND ROUTERD OUT FOR LED STRIP LIGHTING TO UNDERSIDE OF UPPER CABINETS IN KITCHEN	14Sep17	
4948	CABINETRY - POTS & PAN DRAWERS BESIDE STOVE	14Sep17	
4949	CABINETRY - (3) TOP DRAWERS IN ISLAND	14Sep17	



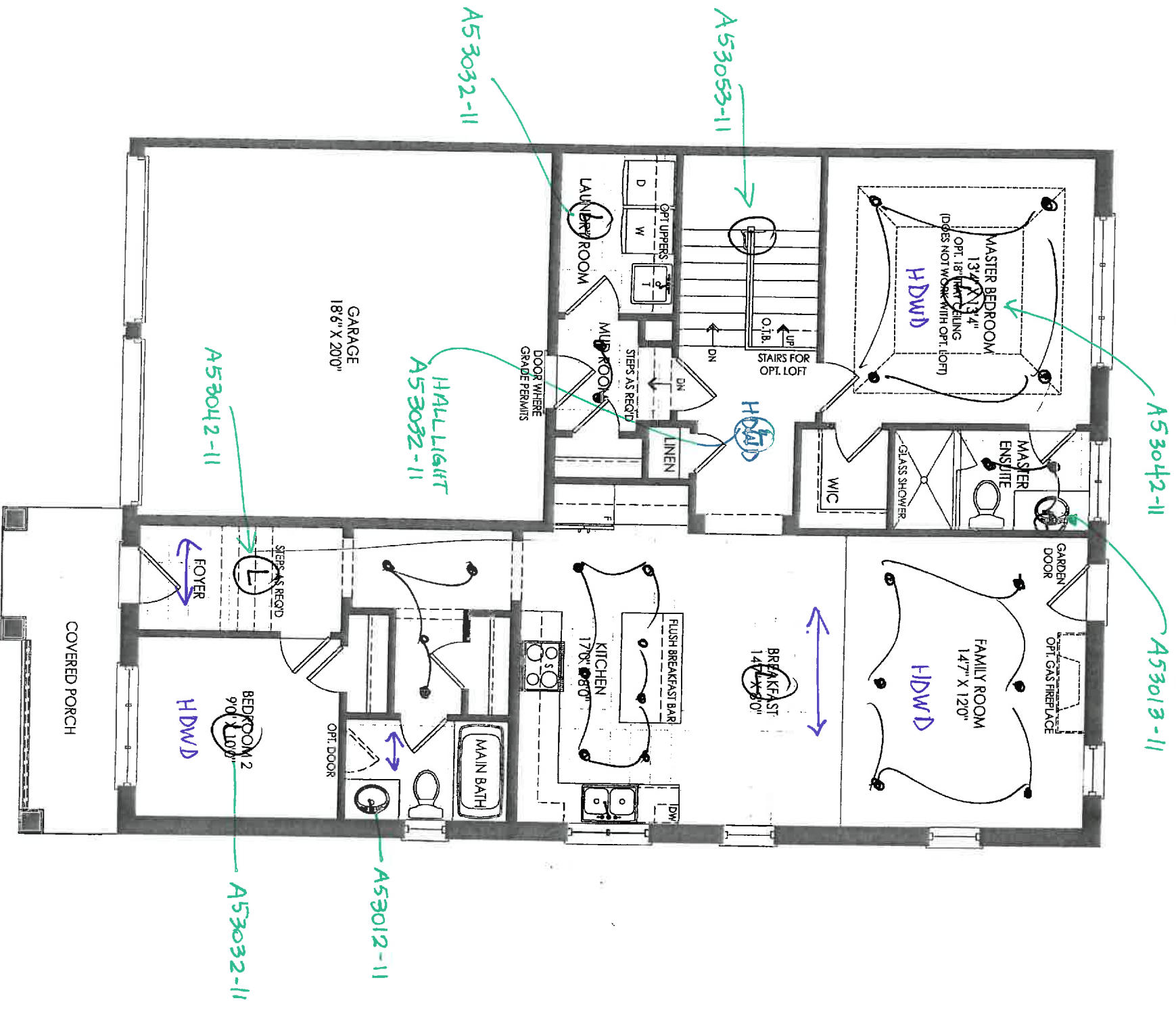
CONSTRUCTION SUMMARY

The Village of Trillium Forest - Zancor North Inc.

PURCHASER: Inventory 129_4

TEL: RES.: 905-738-7010

LOT / PHASE		HOUSE TYPE		PRINT DATE
Block 129 Unit 4 / 3		The Sunshine (TH-02) Elev B End Opt Loft		19-Oct-17
Ref#	Quantity - Description	Approved Notes		
4950	CABINETRY - FROSTED GLASS DOORS ON EITHER SIDE OF STOVE, STANDARD WHITE INTERIOR	14Sep17		
4951	METAL BLACK - PLAIN PICKET ONLY - ** SQUARE POSTS	14Sep17		
4952	WATERLINE TO FRIDGE	14Sep17		
4975	TRIM - UPG (1) STEP STYLE	14Sep17		
4976	TILES - SHOWER JAMB GREY QUARTZ	14Sep17		
4977	ELECTRICAL - LED STRIP LIGHTING IN KITCHEN ** FITS INOT ROUTERED SPACE UNDER CABINETS	14Sep17		
4978	STAIRS - STAIN STAIRS TO MATCH HARDWOOD ** PAINT ONLY RISERS BLACK, *****PAINTABLE RISERS	14Sep17		
4980	PLUMBING - KITCHEN - BLANCO UNDERMOUNT SINK #401518	14Sep17		
4981	PLUMBING - ETCH SINGLE HANDLE KITCHEN FAUCET #S72608 (BN)	14Sep17		
4982	CABINETRY - KITCHEN UPG HARDWARE HANDLES	14Sep17		
4983	CABINETRY - MASTER ENSUITE UPG(1)	14Sep17		
4984	APPLIANCE PACKAGE - WHIRLPOOL	14Sep17		
4985	BATHROOM ACCESSORIES - MEON GENTA ACCESSORIES	14Sep17		
4986	BACKSPLASH - KITCHEN BACKSPLASH - UPG (2)	14Sep17		
4987	COUNTERTOP KITCHEN - UPG (4)	14Sep17		
4988	COUNTERTOP - MAIN BATH - UPG (1) ** INCLUDES RECTANGLE UNDERMOUNTS	14Sep17		
4989	COUNTER TOP - MASTER ENSUITE - UPG (1) ** INCLUDES RECTANGLE UNDERMOUNTS	14Sep17		
4990	CABINETRY - UPPERS IN LAUNDRY ROOM WITH COUNTERTOP ABOVE WASHER/DRYER	14Sep17		
4991	PLUMBING - RIZON SERIES WITH SINGLE LEVER FAUCETS IN MAIN & MASTER ENSUITE	14Sep17		
5278	LIGHTING A53032-11 - (x5) - laundry, stair hall, Bed 2, Bed 3, Bed 4 A53033-11 - (x2) - Loft hall, basement Rec A53042-11 - (x2) - Master Bed, Foyer A53053-11 - (x2) - Stairs, Breakfast A53012-11 - (x1) - Main bath A53013-11 - (x1) - Master Bath + 10ft	19Oct17		
5279	AIR CONDITIONER (COMPLETE) HUMIDIFIER MEDIA FILTER HC-10	19Oct17		



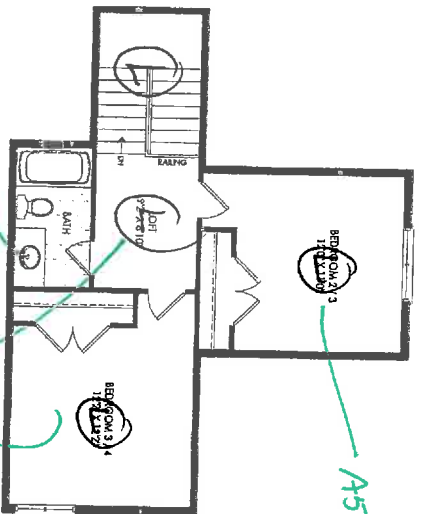
END CONDITION GROUND FLOOR EL. **(A/B)**

- SMOOTH
CEILINGS
- 8 FT. INT. DOORS

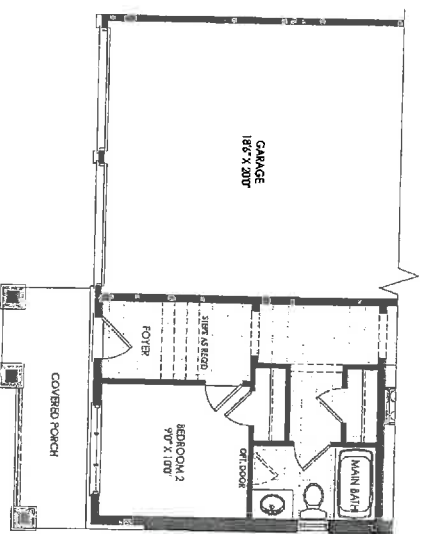
LOT
129-4

THE SUNSHINE TH-02

OTHER PARTIALS AND PLANS



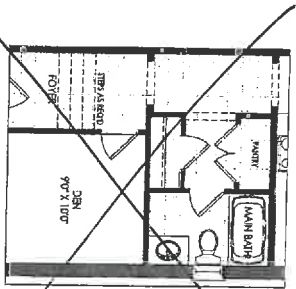
A53032-11



END CONDITION OPT. LOFT EL. A & B

A53032-11

END CONDITION PARTIAL GROUND FLOOR EL. B



A53033-11

END CONDITION PARTIAL OPT. GROUND FLOOR EL. A & B

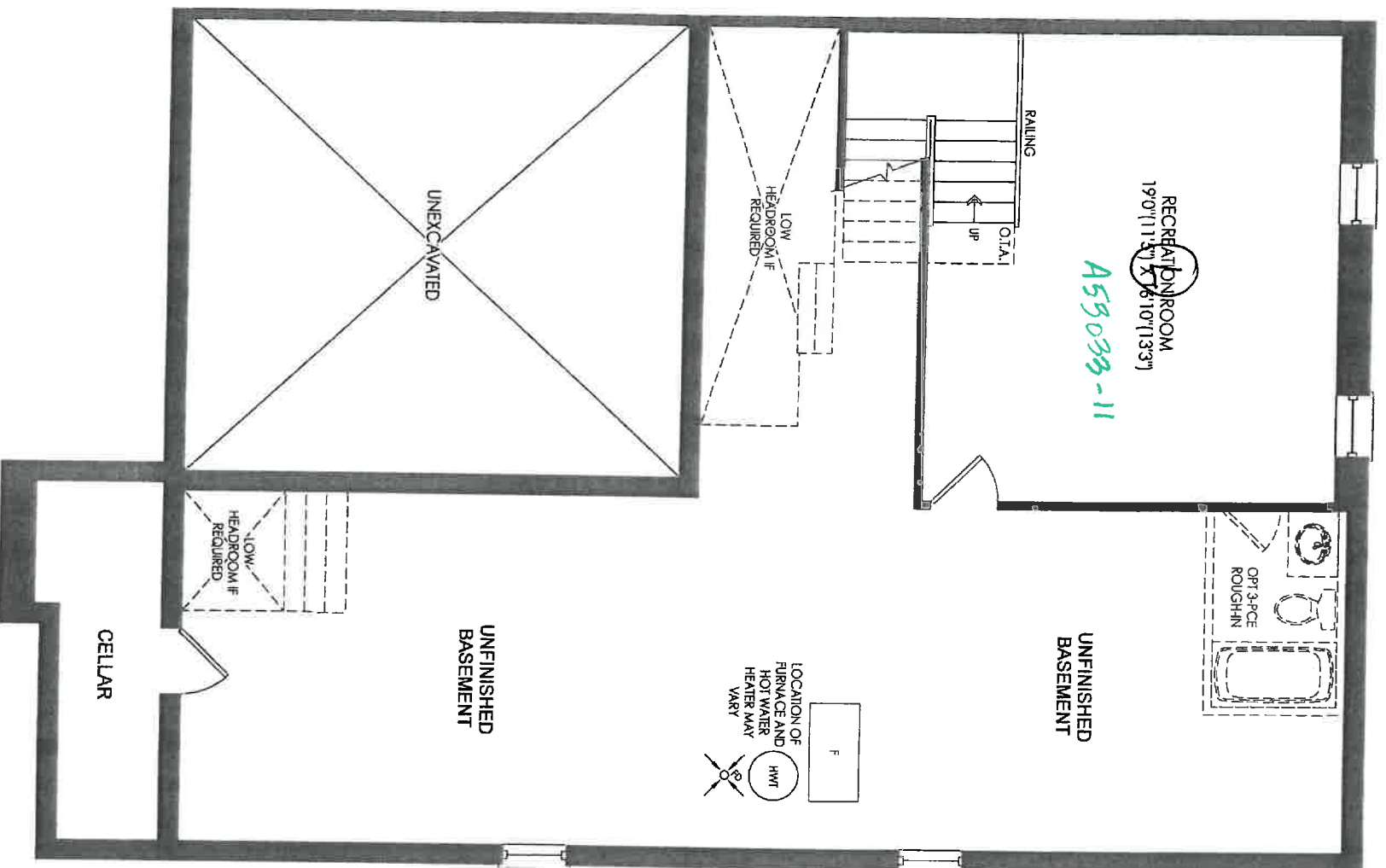
A53012-11

LOT 129-4

SMOOTH

Ceilings

THE SUNSHINE TH-02



END CONDITION BASEMENT EL. A & B

LOT 129-4

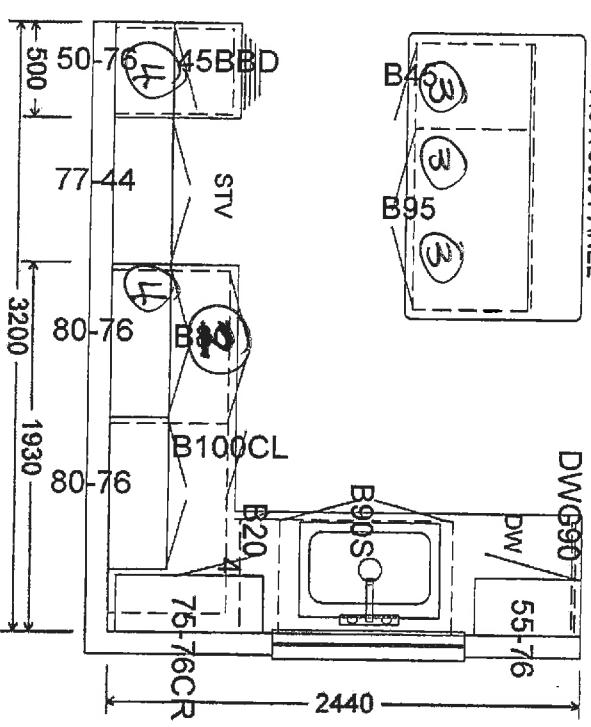
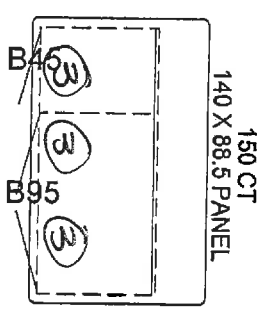
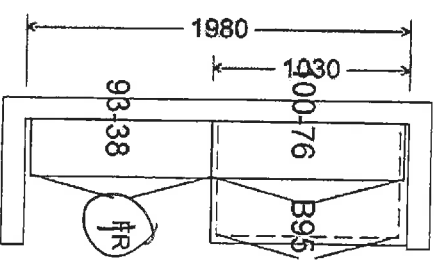
SMOOTH
CELLARS

THE SUNSHINE TH-02

LOT 129-4

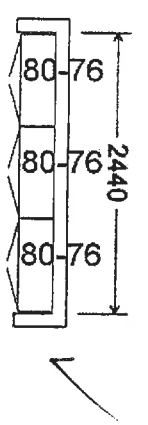
NEW IMAGE KITCHENS INC			
Scale:	Approved by:	Drawn by:	VANCE
Date: 3/23/17		Revised:	
ZANCOR HOMES			
TH-2 WASAGA END/CORNER			Drawing number:

The Sunshind

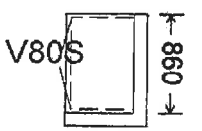


1. Deep uppers w/ gutters
2. Pot drawers
3. Top drawers
4. Frosted glass door
5. Extended uppers
6. Upg. 1
7. Upg handles kitchen
8. 6" Riser.
9. Plate returned for (12) strip

OPTIONAL LAUNDRY UPPERS

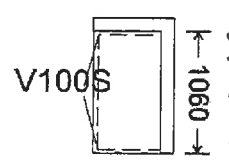


MAIN

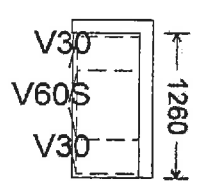


ENSUITE

WfG 1.

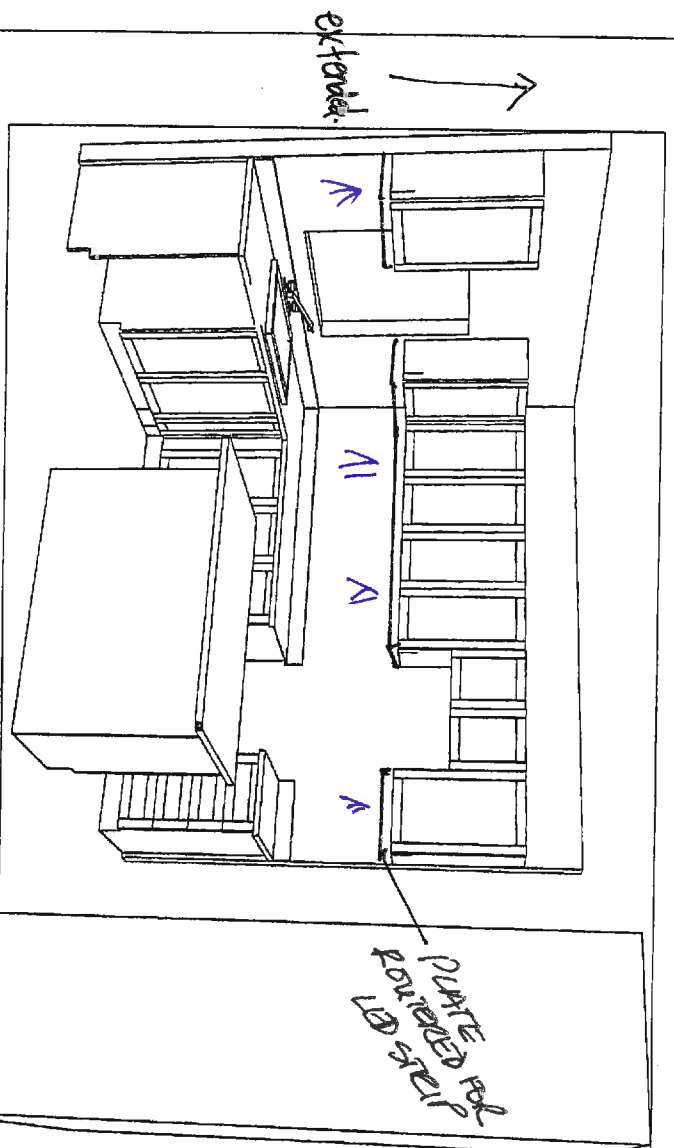


LOFT

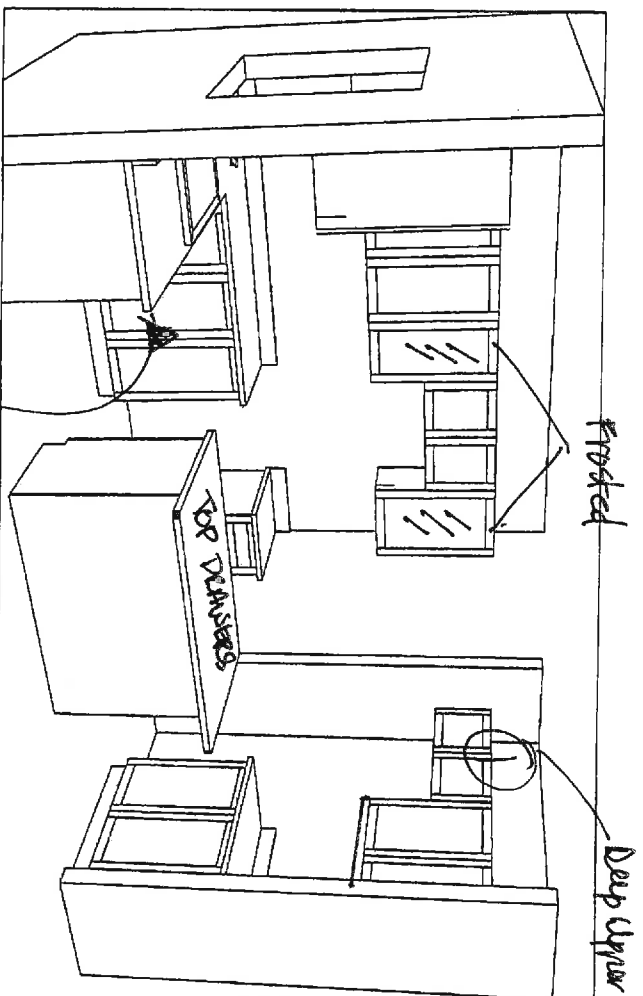


NEW IMAGE KITCHENS INC		Drawn by: VINCE
Scale:	Approved by:	Revised:
Date: 3/23/17		
ZANCOR HOMES		
TH-2 WASAGA END/CORNER		Drawing number:

LOT 129-4



extended.



fronted

Deep Upper w/ gable

parts



Contemporary Metal Pull - 7471

Product number 747192195

Finish Brushed Nickel



TECHNICAL SPECIFICATIONS

Product number	747192195
Pulls and Knobs Style	Contemporary
Center to Center	192 mm
Material	Metal
Projection - Overall Dimensions	30 mm
Length - Overall Dimensions	206 mm
Color Group	Gray and Chrome Group
Finish Number	195

Kitchen

LOT 129-4

Wasaga Towns

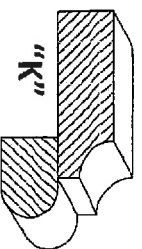
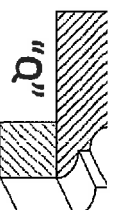
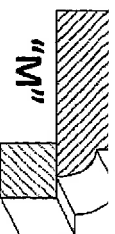
STANDARD CABINET HARDWARE

(New Image Kitchens)



Master te
ensure
Main Bath
Left Bath
laundry

129-4 Wassaqua



129-4 Wassaqua
LOT / SITE

PURCHASER SIGNATURE



COAST Wholesale
APPLIANCES

COAST WHOLESALE APPLIANCES INC
#1 - 1748 CREDITSTONE ROAD, VAUGHAN, ON
L4K 5V8 *** TOLL FREE 1-888-745-0622
PH:(905)303-6909 FX:(905)856-5325



"Innovative Products for Builders, Designers & Home Owners"

Sold ZANCOR HOMES (INNISFIL) LTD.
To: (BELLE AIRE SHORES)
137 BOWES ROAD
CONCORD
ON L4K 1H3

Ship ZANCOR HOMES (WASAGA)
To: INVENTORY

SALES ORDER
QUOTATION

905-738-7010

Sales Representatives		P.O.#	Terms		Prov. Tax #	Customer #	Quote #
F8 WAYNE W/18.7		1	NET 30 DAYS			GO481	1913876-01
Quantity Quoted		Model / Description	Shipping Location	Date Quoted	Date Required	Price	Document Type

WHIRLPOOL 19.9 CUFT FRENCH DOOR FRIDGE

INT WATER SS

WHIRLPOOL SS ELECTRIC CERAN RANGE

AQUA LIFT SELF CLEAN FAN CONVECTION

30" HOOD FAN - WHITE LPOOL

WHIRLPOOL PLASTIC TUB DAWASHER S/S

3 CYCLES,4 OPTIONS,13 SETTINGS

AMANA 4.0 CUFT TOP LOAD WASHER

WHT

AMANA 6.5 CUFT DRYER 11 CYCLES,3 TEMP

WHT, AUTO DRY

EZ FLO STAINLESS STEEL BRAIDED 6"

WASHING MACHINE FILL HOSE

INSTALLATION - HOOKUP WATERLINE TO FRIDGE

INSTALLATION OF HOOD FAN

INSTALLATION OF STANDARD PACKAGE

PACKAGE FREIGHT ALLOWANCE INCLUDED

11

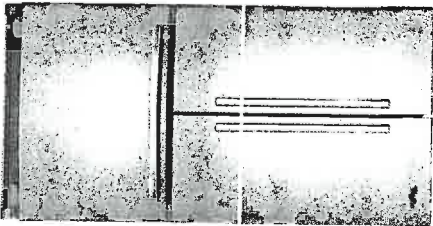
SUBT
PST
DEL/F
HST
TOTAL

"Quote Valid for 15 Days from Quote Date"

NOW 16 LOCATIONS TO SERVE YOU

www.coastappliances.com

Sales Copy



Whirlpool® 20 cu. ft. French Door Refrigerator with Counter Depth Styling

Print

BASE MSRP
\$2,649.99

Choose A Color

Monochromatic Stainless Steel

4.2

400 Reviews Write a Review

where to buy

Add to Compare



AVAILABLE COLOR OPTIONS



Monochromatic Stainless Steel • WRF540CWB/M

OVERVIEW FEATURES SPECIFICATIONS RATINGS & REVIEWS MANUALS

Whirlpool® 20 cu. ft. French Door Refrigerator with Counter Depth Styling

Storing all of your favorite fresh and frozen foods is easy with this 20 cu. ft. capacity French door refrigerator. And, you won't have to sacrifice kitchen space thanks to counter depth styling, which offers a premium, built-in look that fits virtually flush with your current counters and other kitchen fixtures. Keep food at the right temperature without wasting energy with the Accu-Chill™ temperature management system, which uses built-in sensors to measure internal temperature and activates the compressor only when necessary. Plus, food will look just as it should with energy-efficient LED lights, which cast a more natural light. You'll even be ready for special occasions with the temperature-controlled full-width pantry that easily fits wide items like party platters and sheet cakes.

why you'll love it...

Frameless Glass Shelves

Store more items on each shelf with wall-to-wall frameless glass shelves, which offer greater flexibility.

Temperature-Controlled Full-Width Pantry

Store wide items like party platters and sheet cakes or preserve large amounts of meat and cheese with the temperature-controlled full-width pantry.

Adjustable Gallon Door Bins

129-4 Waaaga

Whirlpool® Bottom Mount Refrigerator

PRODUCT MODEL NUMBERS

WRF532SMB WRF540CWB
WRF535SMB WRF535SWH
WRF535SWB

Electrical: A 115-volt, 60-Hz, AC-only, 15- or 20-amp fused, grounded electrical supply is required. It is recommended that a separate circuit serving only your refrigerator be provided. Use an outlet that cannot be turned off by a switch. Do not use an extension cord.

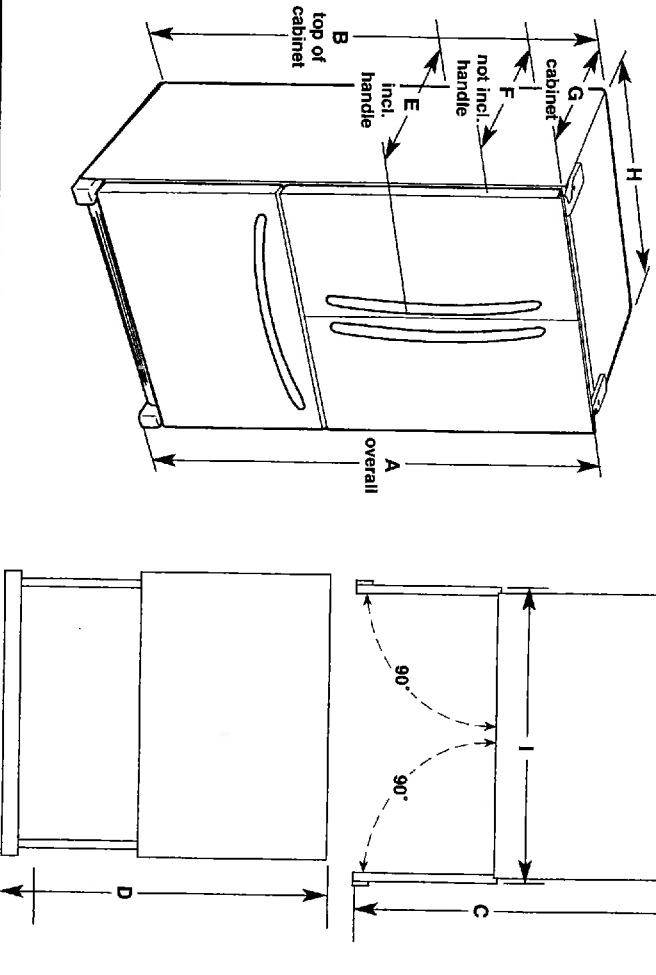
NOTE: Before performing any type of installation, cleaning, or removing a light bulb, turn the control (Thermostat, Refrigerator or Freezer Control depending on the model) to OFF and then disconnect the refrigerator from the electrical source. When you are finished, reconnect the refrigerator to the electrical source and reset the control (Thermostat, Refrigerator or Freezer Control depending on the model) to the desired setting. See "Using the Controls."

Water: A cold water supply with water pressure between 30 and 120 psi (207 and 827 kPa) is required to operate the ice maker and water dispenser. If you have questions about your water pressure, call a licensed, qualified plumber.

IMPORTANT: The pressure of the water coming out of a reverse osmosis system going to the water inlet valve of the refrigerator needs to be between 35 and 120 psi (241 and 827 kPa).

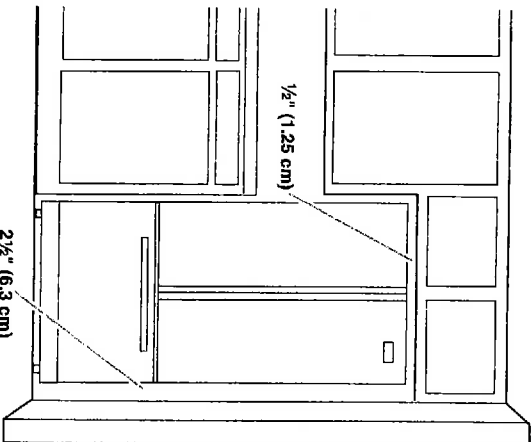
Reverse Osmosis Water Supply: If a reverse osmosis water filtration system is connected to your cold water supply, the water pressure to the reverse osmosis system needs to be a minimum of 40 to 60 psi (276 to 414 kPa).

PRODUCT DIMENSIONS



Model Number/Size	Height - Overall "A"	Height - Top of Cabinet "B"	Depth - Door Open 90° "C"	Depth - Drawer Open "D"	Depth - Handles "E"	Depth - Without Handles "F"	Depth - Cabinet Only "G"	Width - Cabinet "H"	Width - Door Open 90° With Handles "I"
WRF535SWB 25.2 cu. ft.	70 1/8" (178.1 cm)	68 3/8" (174.8 cm)	48 1/8" (122.1 cm)	53 1/8" (135 cm)	35 7/8" (90 cm)	32 3/8" (83.7 cm)	29 1/8" (74 cm)	35 3/8" (90.5 cm)	43 3/8" (110.2 cm)
WRF535SMB 25.2 cu. ft.	70 1/8" (178.1 cm)	68 3/8" (174.8 cm)	48 3/8" (122.1 cm)	53 1/8" (135 cm)	35 3/8" (90 cm)	32 3/8" (83.7 cm)	29 1/8" (74 cm)	35 3/8" (90.5 cm)	43 3/8" (110.2 cm)
WRF532SMB 22.1 cu. ft.	70 1/8" (178.1 cm)	68 3/8" (174.8 cm)	42 3/8" (107.6 cm)	52 1/8" (132.4 cm)	34 1/8" (87.5 cm)	31 3/8" (81.1 cm)	28 1/8" (71.4 cm)	32 3/8" (82.9 cm)	40 3/8" (102.6 cm)
WRF540CWB 20 cu. ft.	70 1/8" (178.1 cm)	68 3/8" (174.8 cm)	43 3/8" (109.4 cm)	44 1/8" (113.0 cm)	29 3/8" (74.6 cm)	28" (71.1 cm)	24 1/8" (61.3 cm)	35 3/8" (90.5 cm)	43 3/8" (110.2 cm)
WRF535SWH 25.2 cu. ft.	70 1/8" (178.1 cm)	68 3/8" (174.9 cm)	48 1/8" (122.2 cm)	52 1/8" (132.4 cm)	35 1/8" (90.2 cm)	33" (83.8 cm)	29 1/8" (74 cm)	35 3/8" (90.5 cm)	41" (104.1 cm)

LOCATION REQUIREMENTS

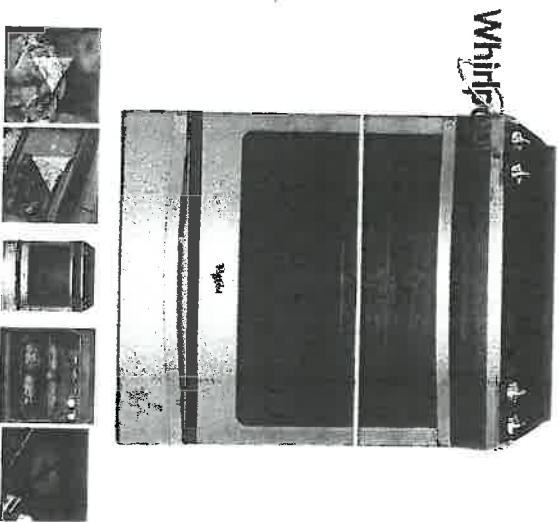


To ensure proper ventilation for your refrigerator, allow for a 1/2" (1.25 cm) space on each side and at the top. Allow for 1" (2.54 cm) of space behind the refrigerator. If your refrigerator has an ice maker, make sure you leave some extra space at the back for the water line connections.

If you are installing your refrigerator next to a fixed wall, leave 2 1/2" (6.3 cm) minimum on the hinge side (some models require more) to allow for the door to swing open.

NOTE: This refrigerator is intended for use in a location where the temperature ranges from a minimum of 55°F (13°C) to a maximum of 110°F (43°C). The preferred room temperature range for optimum performance, which reduces electricity usage and provides superior cooling, is between 60°F (15°C) and 90°F (32°C). It is recommended that you do not install the refrigerator near a heat source, such as an oven or radiator.

129-4 W0597594C



Whirlpool 6.2 cu. ft. Front-Control Electric Stove with TimeSavor™ Convection

Print

BASE MSRP
\$1,799.99

Choose A Color
Stainless Steel

4.4
844 Reviews Write a Review

where to buy
Add to Compare

AVAILABLE COLOR OPTIONS



Stainless Steel - YWEE730H0DS

4 SHARE

OVERVIEW	FEATURES	SPECIFICATIONS	RATINGS & REVIEWS	MANUALS	RELATED MODELS & ACCESSORIES
----------	----------	----------------	-------------------	---------	------------------------------

Whirlpool 6.2 cu. ft. Front-Control Electric Stove with TimeSavor™ Convection

Leave unnecessary meal prep behind with the 6.2 cu. ft. front-control electric stove that fits your kitchen and delivers delicious results. TimeSavor™ convection cooking helps you cook tastier roasts and bake bread with just the right texture in less time than non-convection ovens. You'll be able to skip the preheat and cook frozen favorites faster in this self-cleaning stove with Frozen Bake™ technology. And thanks to the FIT system, it's easy to upgrade to a full-depth range made to fit in your existing kitchen cutout. When it's time for cleanup, Aqualift™ self-cleaning technology helps you wipe away messes without harsh chemicals or odours.

why you'll love it...

6.2 cu. ft. Capacity

The 6.2 cu. ft. oven has room to bake and roast holiday dishes, so there's always enough space to handle even your largest meals.

Frozen Bake™ Technology

Skip preheating for favorites like pizza, lasagna, chicken nuggets, fries or pies so you can cook frozen foods faster.*

Full-Depth Slide-In Range with the FIT System

Upgrade to a full-depth slide-in range that fits both your life and your range cutout thanks to the FIT system.

129-4 Manager

- Cabinet opening dimensions that are shown must be used. Given dimensions are minimum clearances.
- The anti-tip bracket must be installed. To install the anti-tip bracket shipped with the range, see "Install Anti-Tip Bracket" section.
- Grounded electrical supply is required. See the appropriate "Electrical Requirements" section.
- Contact a qualified floor covering installer to check that the floor covering can withstand at least 200°F (93°C).
- Use an insulated pad or ¼" (0.64 cm) plywood under range if installing range over carpeting.

IMPORTANT: To avoid damage to your cabinets, check with your builder or cabinet supplier to make sure that the materials used will not discolor, delaminate or sustain other damage. This oven has been designed in accordance with the requirements of UL and CSA International and complies with the maximum allowable wood cabinet temperatures of 194°F (90°C).

Mobile Home - Additional Installation Requirements

The installation of this range must conform to the Manufactured Home Construction and Safety Standard, Title 24 CFR, Part 3280 (formerly the Federal Standard for Mobile Home Construction and Safety, Title 24, HUD Part 280). When such standard is not applicable, use the Standard for Manufactured Home Installations, ANSI A225.1/NFPA 501A or with local codes. In Canada, the installation of this range must conform with the current standards CAN/CSA-A240-latest edition, or with local codes.

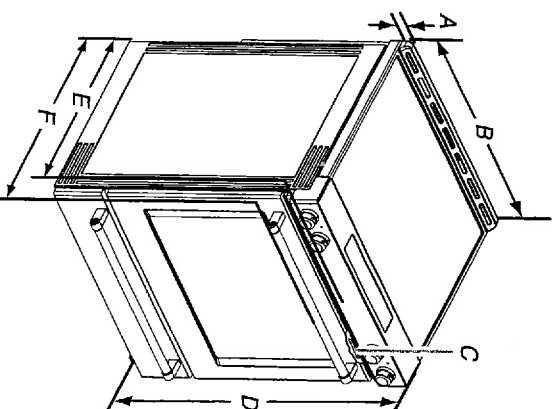
Mobile Home Installations Require:

- When this range is installed in a mobile home, it must be secured to the floor during transit. Any method of securing the range is adequate as long as it conforms to the standards listed above.
- Four-wire power supply cord or cable must be used in a mobile home installation. The appliance wiring will need to be revised. See "Electrical Connection - U.S.A. Only" section.

Product Dimensions

This manual covers several models. Your model may appear different from the models depicted. Dimensions given are maximum dimensions across all models.

Model KSEB900



- | | |
|--|--|
| A. 1 3/8" (3.0 cm) height from cooktop to top of vent | E. 28 3/8" (71.9 cm) max. depth from front of console to back of range |
| B. 29 7/8" (75.9 cm) | F. 28 1/2" (73.3 cm) max. depth from handle to back of range |
| C. Model/serial/rating plate (located behind the oven door on the top right-hand side of the oven frame) | |
| D. 36" (91.4 cm) height to top of cooktop edge with leveling legs screwed all the way in* | |

IMPORTANT: Range must be level after installation. Follow the instructions in the "Level Range" section. Using the cooktop as a reference for leveling the range is not recommended.

*Range can be raised approximately 1" (2.5 cm) by adjusting the leveling legs.

129-4 Wanga

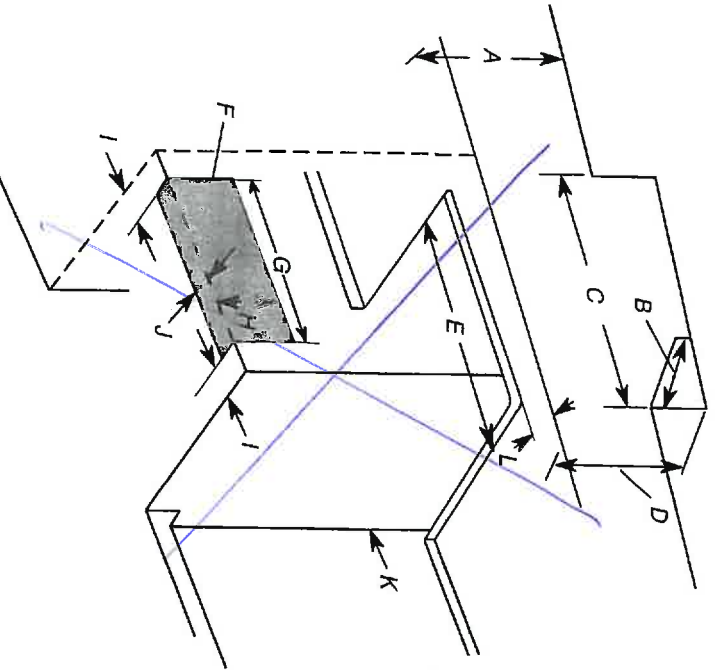
Cabinet Dimensions

Cabinet opening dimensions shown are for 25" (64.0 cm) countertop depth, 24" (61.0 cm) base cabinet depth and 36" (91.4 cm) countertop height.

IMPORTANT: If installing a range hood or microwave hood combination above the range, follow the range hood or microwave hood combination installation instructions for dimensional clearances above the range, follow the range hood or microwave hood Range may be installed next to combustible walls with zero clearance.

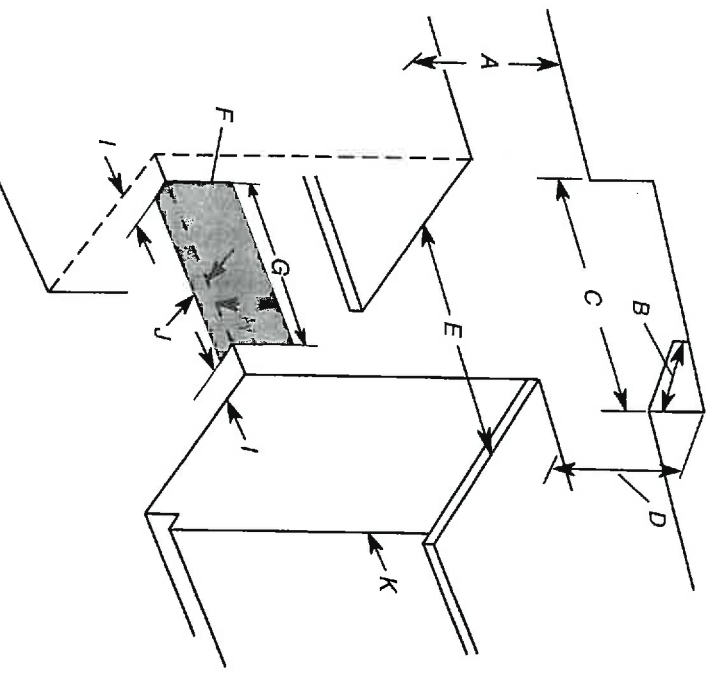
NOTE: When installed in a slide-in cutout, the front of oven door may protrude beyond the base cabinet.

Slide-In Cutout



- A. 18" (45.7 cm) upper side cabinet to countertop
- B. 13" (33 cm) max. upper cabinet depth
- C. 30" (76.2 cm) min. opening width
- D. For minimum clearance to top of cooktop, see NOTE*.
- E. 30" (76.2 cm) min. opening width
- F. The shaded area is recommended for installation of grounded outlet.
- G. 13 1/8" (33.3 cm)
- H. 7 1/16" (19.5 cm)
- I. 4 3/16" (12.2 cm)
- J. 3 1/16" (9.4 cm) plus measurement of L
- K. Cabinet door or hinges should not extend into the cutout.
- L. Remaining counter depth should not exceed 2 1/4" (5.7 cm).

Freestanding Cutout



- A. 18" (45.7 cm) upper side cabinet to countertop
- B. 13" (33 cm) max. upper cabinet depth
- C. 30" (76.2 cm) min. opening width
- D. For minimum clearance to top of cooktop, see NOTE*.
- E. 30" (76.2 cm) min. opening width
- F. The shaded area is recommended for installation of grounded outlet.
- G. 13 1/8" (33.3 cm)
- H. 7 1/16" (19.5 cm)
- I. 4 3/16" (12.2 cm)
- J. 3 1/16" (9.4 cm)
- K. Cabinet door or hinges should not extend into the cutout.

***NOTE:** 24" (61.0 cm) minimum when bottom of wood or metal cabinet is shielded by not less than 1/4" (0.64 cm) flame retardant millboard covered with not less than No. 28 MSG sheet steel, 0.015" (0.4 mm) stainless steel, 0.024" (0.6 mm) aluminum or 0.020" (0.5 mm) copper.

30" (76.2 cm) minimum clearance between the top of the cooking platform and the bottom of an uncovered wood or metal cabinet.

129-4 Madaqa

Whirlpool® Dishwasher
AccuSense® Soil Sensor

0.0

Write a Review

Make sure dishes come out clean. The detergents how dirty dishes are and are needed for customized cleaning. This is ENERGY STAR® qualified and holds quietly at 55 dBA, and remembers your 1-10. Plus, it cleans a lightly soiled load in 1-Hour wash cycle, so you have clean in hurry. It's all from the brand that can save 18 years in a row.

Top Features

additional features...

Soil Sensor

Determines how dirty dishes are and adjusts the Normal cycle as needed to make sure dishes come out clean.

Normal Cycle

Use for normal amounts of food soil to clean up leftover messes from your day-to-day meals.

Heavy Cycle

Take care of heavily-soiled messes and other hard-to-clean dishes without the extra elbow grease by adding extra time to the cycle.

High Temperature Wash Option

Heated Dry Option

Use a clean, dry dish straight from the dishwasher thanks to added heat for drying. For optimal drying results, use this option with rinse aid.

ENERGY STAR® Certified

Exceeds government standards to help conserve natural resources and save money on utility bills.

Designed, Engineered and Assembled in the U.S.A. with American Pride

Configuration and Overview

<p>Tub Material : Rack Material : Water Filtration System : Adjustable Rack : Star K Compliant : Energy Star® Qualified : Capacity :</p>	<p>Vinyl Removable Filter No Kosher Consumer Friendly ENERGY STAR® Qualified 13</p>
--	--

Controls	Plastic
1	1
2	2
3	3
4	4
5	5
6	6
7	7
8	8
9	9
10	10
11	11
12	12
13	13
14	14
15	15
16	16
17	17
18	18
19	19
20	20
21	21
22	22
23	23
24	24
25	25
26	26
27	27
28	28
29	29
30	30
31	31
32	32
33	33
34	34
35	35
36	36
37	37
38	38
39	39
40	40
41	41
42	42
43	43
44	44
45	45
46	46
47	47
48	48
49	49
50	50
51	51
52	52
53	53
54	54
55	55
56	56
57	57
58	58
59	59
60	60
61	61
62	62
63	63
64	64
65	65
66	66
67	67
68	68
69	69
70	70
71	71
72	72
73	73
74	74
75	75
76	76
77	77
78	78
79	79
80	80
81	81
82	82
83	83
84	84
85	85
86	86
87	87
88	88
89	89
90	90
91	91
92	92
93	93
94	94
95	95
96	96
97	97
98	98
99	99
100	100

129-4 WMA

Tub Material :	Vinyl
Rack Material :	1-5" Cup Shelf
Upper Rack Extras :	Full Length Non Spliable
Silverware Basket Type :	No
Upper Adjustable Rack :	55
Decibel Level :	

Cycle and Options

Number of Wash Cycles :	3
Cycle Selections :	1-Hour Wash, Heavy, Normal
Option Selections :	4 Hour Delay, Control Lock, Heated Dry, Hi Temp Wash

Dimensions

See Dimension Guide for ~~Width~~ Measurements

Height :	24 1/2
Depth :	23 7/8
Width :	34 1/2
Maximum Height :	33 1/2
Minimum Height :	49 1/2
Depth With Door Open 90 Degree :	

This product has been transitioned to WDF330PAHW, but there may be limited availability at your local retailer.

Register this product
Manuals & Literature
Schedule Service

This online merchant is located in Canada at 200-6750 Century Avenue, Mississauga, ON L5N 0B7

MSRP is Manufacturer's Suggested Retail Price and may not necessarily be the price at which the product is sold in the consumer's area. Dealer alone determines actual price.

® Registered trademark™ Trademark of Whirlpool, U.S.A. © 2017 Whirlpool Corporation. All Rights Reserved. All other trademarks are owned by their respective companies.

29-4 weeks



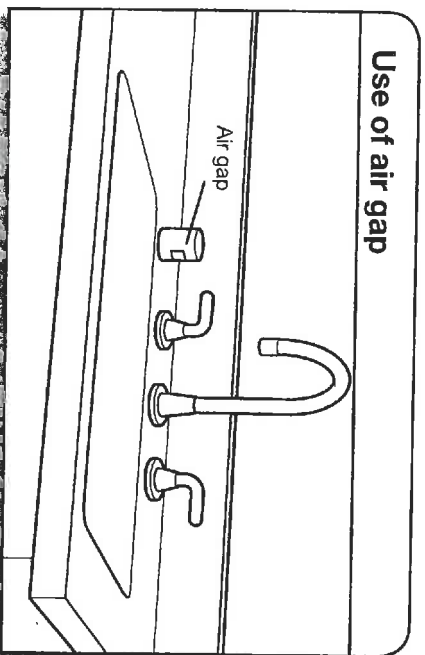
Undercounter Dishwasher

PRODUCT MODEL NUMBERS

WDF110PAB	WDF320PAD	WDTT10PAH
WDF111PAB	WDF330PAH	WDTT20PAD
WDF120PAF	WDF331PAH	WDTT30PAH
WDF121PAF	WDF520PAD	WDTT35PAG
WDF130PAH	WDF540PAD	WDTT35PAH
WDF131PAH	WDF545PAF	

DRAIN REQUIREMENTS

- A new drain hose is supplied with your dishwasher. If drain hose is not long enough, use a new drain hose with a maximum length of 12 ft (3.7 m) that meets all current AHAM/IAPMO test standards, is resistant to heat and detergent, and fits the 1" (25 mm) drain connector of the dishwasher. See the "Tools and Parts" section at the front of the guide for part details and orders.
- Make sure to connect drain hose to waste tee or disposer inlet above drain trap in house plumbing and 20" (508 mm) minimum above the floor. It is recommended that the drain hose either be looped up and securely fastened to the underside of the counter or be connected to an air gap.
- Make sure to use an air gap if the drain hose is connected to house plumbing lower than 20" (508 mm) above subfloor or floor.



- If required, the air gap should be installed in accordance with the air gap installation instructions. When you are connecting the air gap, a rubber hose (not provided) will be needed to connect to the waste tee or disposer inlet.
- Use 1/2" minimum I.D. drain line fittings.

WATER SUPPLY REQUIREMENTS

- This dishwasher has a water heating feature and also requires a connection to a hot water supply line.
- A hot water line with 20 to 120 psi (138 to 862 kPa) water pressure can be verified by a licensed plumber.
- 120°F (49°C) water at dishwasher
- 3/8" O.D. copper tubing with compression fitting or flexible braided water supply line. See the "Tools and Parts" section at the front of the guide for part details and orders.

NOTE: 1/2" minimum plastic tubing is not recommended.

- A 90° elbow with 3/4" hose connection with rubber washer. See the "Tools and Parts" section at the front of the guide for part details and orders.
- Do not solder within 6" (152 mm) of the water inlet valve.
- If installed in new construction, make sure the house water supply lines have been flushed prior to connecting the dishwasher to remove any debris that may exist in the supply line.

NOTE: If replacing an existing dishwasher, it is recommended to install a new water line (see the "Tools and Parts" section at the front of the guide for part details) and drain hose (supplied) with the new dishwasher.

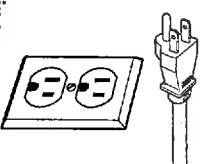
ELECTRICAL REQUIREMENTS

You Must Have:

- 120-volt, 60 Hz, AC-only, 15- or 20-amp, fused electrical supply
 - Copper wire only
 - A maximum of 2 field wiring supply conductors (12 AWG largest size) plus 1 grounding conductor are permitted in the terminal box.
- We Recommend:
- A time-delay fuse or circuit breaker
 - A separate circuit

If Connecting Dishwasher with a Power Cord:

- Use a UL Listed power cord kit marked for use with dishwasher. See the "Tools and Parts" section at the front of the guide for part details and orders.
- Plug into a grounded 3 prong outlet. Outlet must meet all local codes and ordinances.



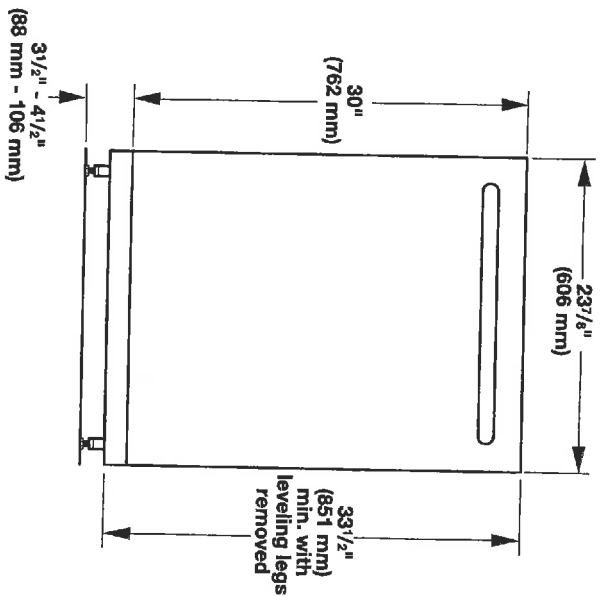
If Connecting Dishwasher with Direct Wiring:

- Use flexible, armored, or nonmetallic sheathed copper wire with grounding wire that meets the wiring requirements for your home and local codes and ordinances.
- Use a UL Listed/CSA Approved metallic strain relief.

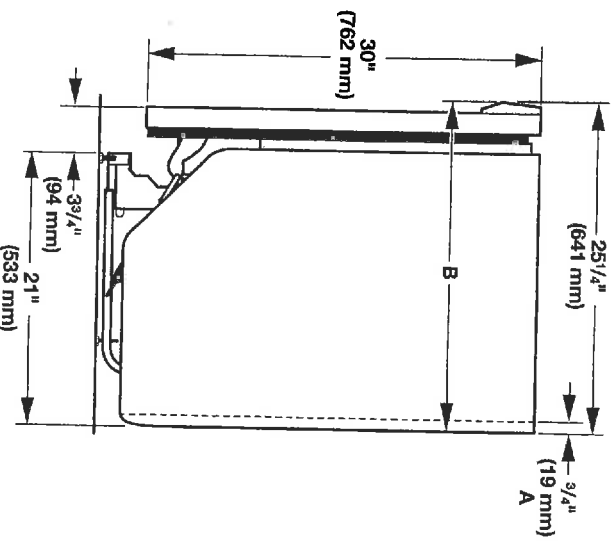


189-4 WMA

PRODUCT AND CABINET OPENING DIMENSIONS

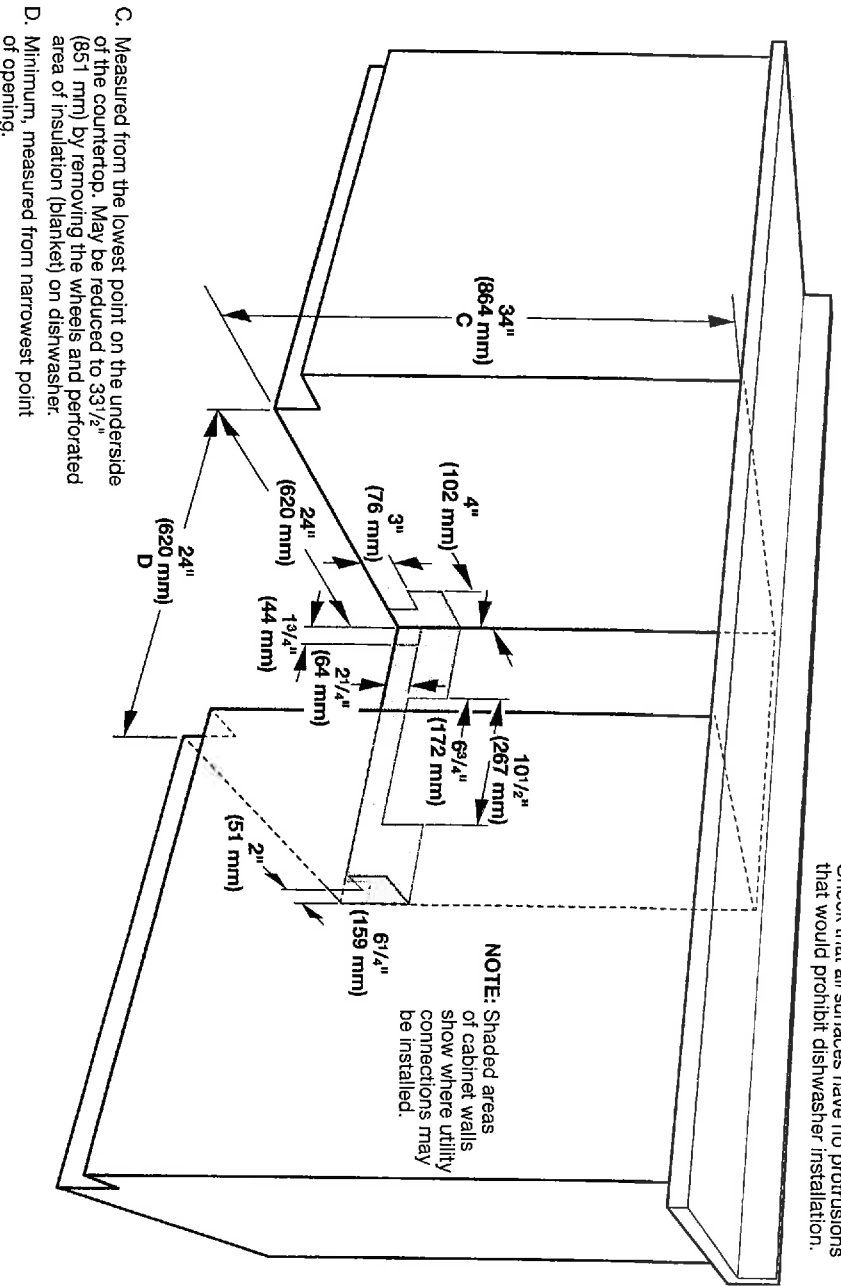


For 4" (100 mm) toe kick, height of cabinet opening is 34½" (863 mm).



- A. Insulation may be compressed (not used on all models).
- B. Door handles may protrude forward of the face of the dishwasher, (varies by model).

Check that all surfaces have no protrusions that would prohibit dishwasher installation.

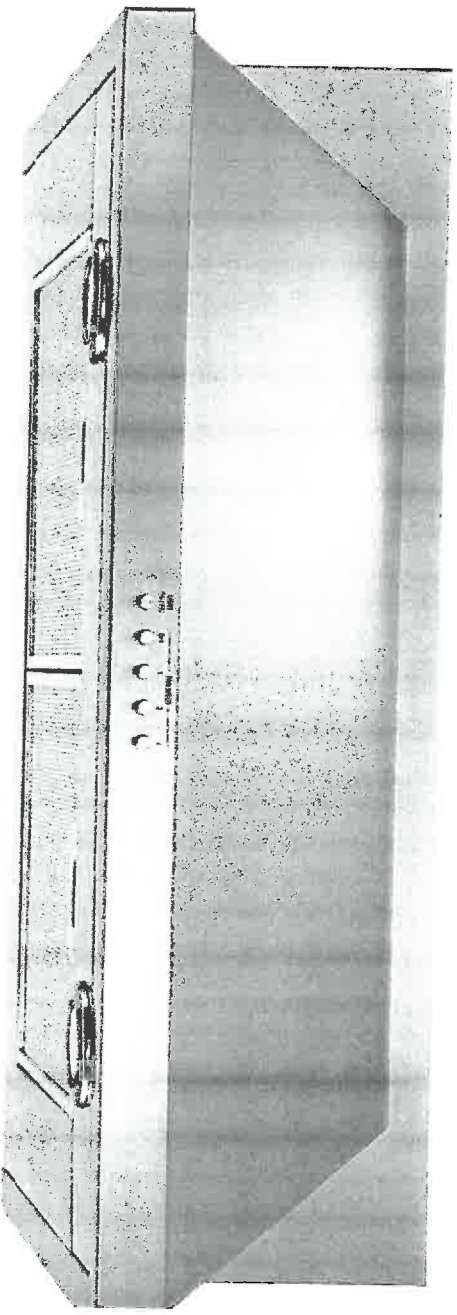


C. Measured from the lowest point on the underside of the countertop. May be reduced to 33 1/2" (851 mm) by removing the wheels and perforated area of insulation (blanket) on dishwasher.

Because Whirlpool Corporation policy includes a continuous commitment to improve our products, we reserve the right to change materials and specifications without notice.

Dimensions are for planning purposes only. For complete details, see Installation Instructions packed with product. Specifications subject to change without notice.

129-4 Manager



129-4 black

Range Hood - 30" (76.2 cm) and 36" (91.4 cm)

Calculating Vent System Length

To calculate the length of the system you need, add the equivalent feet (meters) for each vent piece used in the system.

6" (15.2 cm) or Larger Round Vent System

Vent Piece

Round

45° elbow 2.5 ft (0.8 m)



90° elbow 5.0 ft (1.5 m)



6" (15.2 cm) or larger wall cap 0.0 ft (0.0 m)



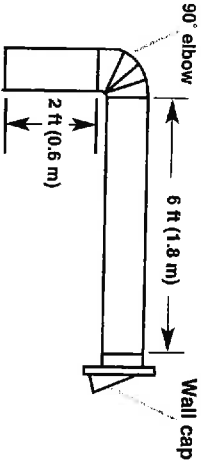
3 1/4" x 10" (8.3 cm x 25.4 cm) to 6" (15.2 cm) or larger 4.5 ft (1.4 m)



3 1/4" x 10" (8.3 cm x 25.4 cm) to 6" (15.2 cm) or larger 90° elbow 5.0 ft (1.5 m)



Example vent system



Maximum Recommended Length = 50 ft (15.2 m)

1 - 90° elbow	= 5.0 ft (1.5 m)
1 - wall cap	= 0.0 ft (0.0 m)
8 ft (2.4 m) straight	= 8.0 ft (2.4 m)
Length of 7" (17.8 cm) system	= 13.0 ft (3.9 m)

3 1/4" x 10" (8.3 cm x 25.4 cm) Vent System

Vent Piece

Round

3 1/4" x 10" (8.3 cm x 25.4 cm) 90° elbow 5.0 ft (1.5 m)



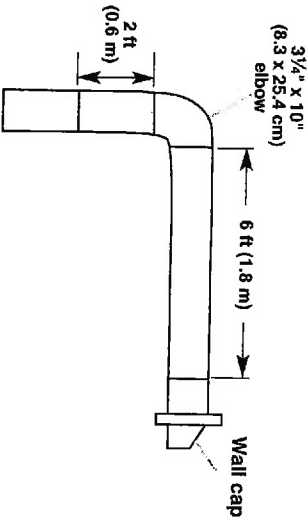
3 1/4" x 10" (8.3 cm x 25.4 cm) flat elbow 12.0 ft (3.7 m)



3 1/4" x 10" (8.3 cm x 25.4 cm) wall cap 0.0 ft (0.0 m)



Example vent system



Maximum Recommended Length = 35 ft (10.7 m)

1 - 90° elbow	= 5.0 ft (1.5 m)
8 ft (2.4 m) straight	= 8.0 ft (2.4 m)
1 - wall cap	= 0.0 ft (0.0 m)
Length of 3 1/4" x 10" (8.3 cm x 25.4 cm) system	= 13.0 ft (3.9 m)

LOT 129-4

Simone Walker

From:
Sent:
To:
Subject:

Importance:

Simone Walker
Wednesday, September 06, 2017 3:23 PM
"Vince Roti"
WASAGA TOWNS - MODEL HOME #1 LOT 129-4

High

Hey Vince,

We are doing a model home for Wasaga Towns. Can you please price this for me ☺

Thanks,

CABINETS - EXTENDED UPPERS TO 39-1/2" HIGH
CABINETS - 6 INCH RISER TO UPPER CABINETS IN KITCHEN
CABINETRY – KITCHEN UPGRADE 1
CABINETRY - DEEP UPPERS ABOVE FRIDGE WITH GABLES
CABINETRY - PLATE WITH STRAIGHT EDGE AND ROUTERED OUT FOR LED STRIP LIGHTING TO UNDERSIDE OF UPPER CABINETS IN KITCHEN
CABINETRY - POT DRAWERS BESIDE STOVE
CABINERTY - FROSTED GLASS DOORS ON EITHER SIDE OF STOVE, MATCHING INTERIOR
CABINETRY - (3) TOP DRAWERS IN ISLAND
CABINETRY - KITCHEN UPGRADED HANDLES
CABINETRY - MASTER ENSUITE UPGRADE 1

Simone Walker

 Zancor Homes

Décor house: 35 Sim Hill Crescent, King City L7B 0C5

Cell: 416-843-7270
Office: 905-738-7010
Fax: 905-738-5948