



SEE #4150 & #5691

CONSTRUCTION SUMMARY

Belle Aire Shores - Zancor Homes (Innisfil) Ltd.

PURCHASER: **INVENTORY**

TEL. RES.:

LOT / PHASE	HOUSE TYPE	PRINT DATE
128 / 1	GALLEY (36-05) ELEV B	24-Apr-18

Ref#	Quantity - Description	Approved	Notes
2424	BONUS: Granite kitchen countertops with undermount sink 3 Piece stainless steel appliances with white top loading washer and dryer Stainless steel under cabinet hood fan Extended uppers in kitchen (39-1/2") BBQ Gas line	28Apr17	
2425	BONUS: 9ft main floor ceilings, 8ft ceilings on second floor 3-1/4 inch by 3/4 inch natural prefinished engineered hardwood on main floor in non-tiled areas, excludes bedrooms Natural finished oak stair	28Apr17	
2426	SMOOTH CEILINGS ON MAIN FLOOR, UPPER HALL & MASTER BEDROOM	12Jun17	
2427	ELECTRICAL - LED POTTLIGHTS (4) IN KITCHEN ON SEP SWITCH, STD LIGHT TO BE OVER ISLAND (6) IN GREAT ROOM ON SEP SWITCH, STD TO REMAIN (7) IN DINING ROOM ON SEP SWITCH, STD TO REMAIN (2) IN FOYER ON SAME SWITCH AS STD LIGHT	12Jun17	
2428	FIREPLACE IN GREAT ROOM WITH STANDARD MANTLE**INCLUDES BUMP OUT FOUNDATION, IF POSSIBLE **IF SETBACKS DONT ALLOW FOR BUMP, INSTALL FIREPLACE INTO THE ROOM	12Jun17	
2429	8 FOOT DOORS ON MAIN FLOOR**INCLUDES GARAGE MAN DOOR	12Jun17	8 FOOT GARAGE MAN DOOR NOT POSSIBLE DUE TO SITE CONDITIONS
2430	6.00 - LARGER BASEMENT WINDOWS 30 X 24	12Jun17	
2431	FRAMELESS GLASS SHOWER IN MASTER ENSUITE	12Jun17	
4135	CABINETRY - KITCHEN UPGRADE 2 **UPPERS AND LOWERS DIFFERENT COLOURS	28Jun17	
4136	CABINETRY - KITCHEN DEEP UPPERS WITH GABLES	28Jun17	
4137	CABINETRY - KITCHEN POTS & PANS DRAWERS	28Jun17	
4138	CABINETRY - KITCHEN 8 CM RISER	28Jun17	
4139	CABINETRY - KITCHEN HIDDEN LIGHT VALANCE	28Jun17	
4140	CABINETRY - LAUNDRY UPPERS AND LOWERS INCLUDING AROUND TUB	28Jun17	
4141	CABINETRY - MASTER ENSUITE & MAIN BATH UPGRADE 2	28Jun17	
4142	CABINETRY - MASTER ENSUITE BANK OF DRAWERS	28Jun17	
4143	TILES - UPGRADE 6 FOYER, POWDER, SIDE HALL	28Jun17	
4144	TILES - MASTER ENSUITE FLOOR - UPGRADE 5 MASTER ENSUITE SHOWER WALLS - UPGRADE 4 MASTER ENSUITE SHOWER JAMB	28Jun17	
4145	HARDWOOD - MAIN FLOOR IN STANDARD AREAS - UPGRADE 5	28Jun17	
4146	HARDWOOD - UPPER HALL IN LIEU OF CARPET - UPGRADE 5	28Jun17	



CONSTRUCTION SUMMARY

Belle Aire Shores - Zancor Homes (Innisfil) Ltd.

PURCHASER: *INVENTORY*

TEL. RES.:

LOT / PHASE	HOUSE TYPE	PRINT DATE
128 / 1	GALLEY (36-05) ELEV B	24-Apr-18



Ref#	Quantity	Description	Approved	Notes
4147		HARDWOOD - KITCHEN AND BREAKFAST IN LIEU OF TILE - UPGRADE 5	28Jun17	
4148		COUNTERTOP - KITCHEN UPGRADE 4	28Jun17	
4149		COUNTERTOP - MASTER ENSUITE - UPGRADE 1 **INCLUDES RECTANGULAR UNDERMOUNT SINKS	28Jun17	
4150		THES - KITCHEN BACKSPLASH **ABOVE STOVE AND BEHIND CHIMNEY ONLY	28Jun17	DELETED TILE - NOW COUNTERTOP SLAB TO BE INSTALLED
28Jun17 Note: DELETED TILE - NOW COUNTERTOP SLAB TO BE INSTALLED				
4151		MIRROR - KITCHEN BACKPLSAH **SMOKED MIRROR (GREY TINT) **NOT BEHIND STOVE	28Jun17	
4152		TILES - MAIN BATH UPGRADE 5 ON FLOOR UPGRADE 1 ON WALL	28Jun17	
4153		PLUMBING - KITCHEN FAUCET - MOEN ETCH S72608 BRUSHED	28Jun17	
4154		ELECTRICAL - KITCHEN - LED STRIP LIGHTING	28Jun17	
4155		CABINETS - KITCHEN - DELETE UPPEERS ABOVE STOVE FOR CHIMNEY HOOD FAN **CENTRE VENT TO ACCOMODATE	28Jun17	
4156		TRIM - UPGRADE 1	28Jun17	
4157		RAILINGS - METAL - ALL PLAIN	28Jun17	
4158		CABINETRY - KITCHEN UPGRADE HANDLES	28Jun17	
4159		CABINETRY - SOFT CLOSE DOORS AND DRAWERS IN KITCHEN	28Jun17	
4160		PLUMBING - KITCHENS INK - BLANCO PRECIS US 401681 (METALLIC GREY)	28Jun17	
4161		PLUMBING - MASTER ENSUITE & MAIN - MOEN METHOD SINK FAUCETS 6810	28Jun17	
4162		PLUMGING MASTER ENSUITE - MOEN METHOD TUB/SHOWER WITH HANDHELD AND SLIDE BAR 4 PIECE ROMAN TUB FAUCET	28Jun17	
4163		COUNTERTOP - MAIN BATH UPGRADE 1 **INCLUDES RECTANGLE UNDERMOUNT	28Jun17	
4164		DELETE CERAMIC ACCESSORIES **INSTALL MOEN METHOD ACCESSORIES IN ALL BATHROOMS	28Jun17	
4165		APPLIANCES UPGRADE TO STAINLESS STEEL COUNTERDEPTH FRIDGE, STOVE, WHIRLPOOL DISHWASHER, GLASS CHIMNEY HOOD & STANDARD WHITE WASHER AND DRYER	28Jun17	
5691		BACKSPLASH - INSTALL COUNTERTOP SLAB BEHIND STOVE in lieu of original tile selection #41 50 deleted	24Apr18	

This Document is Extremely Time Sensitive - Printed 24 Apr 18 at 11:26

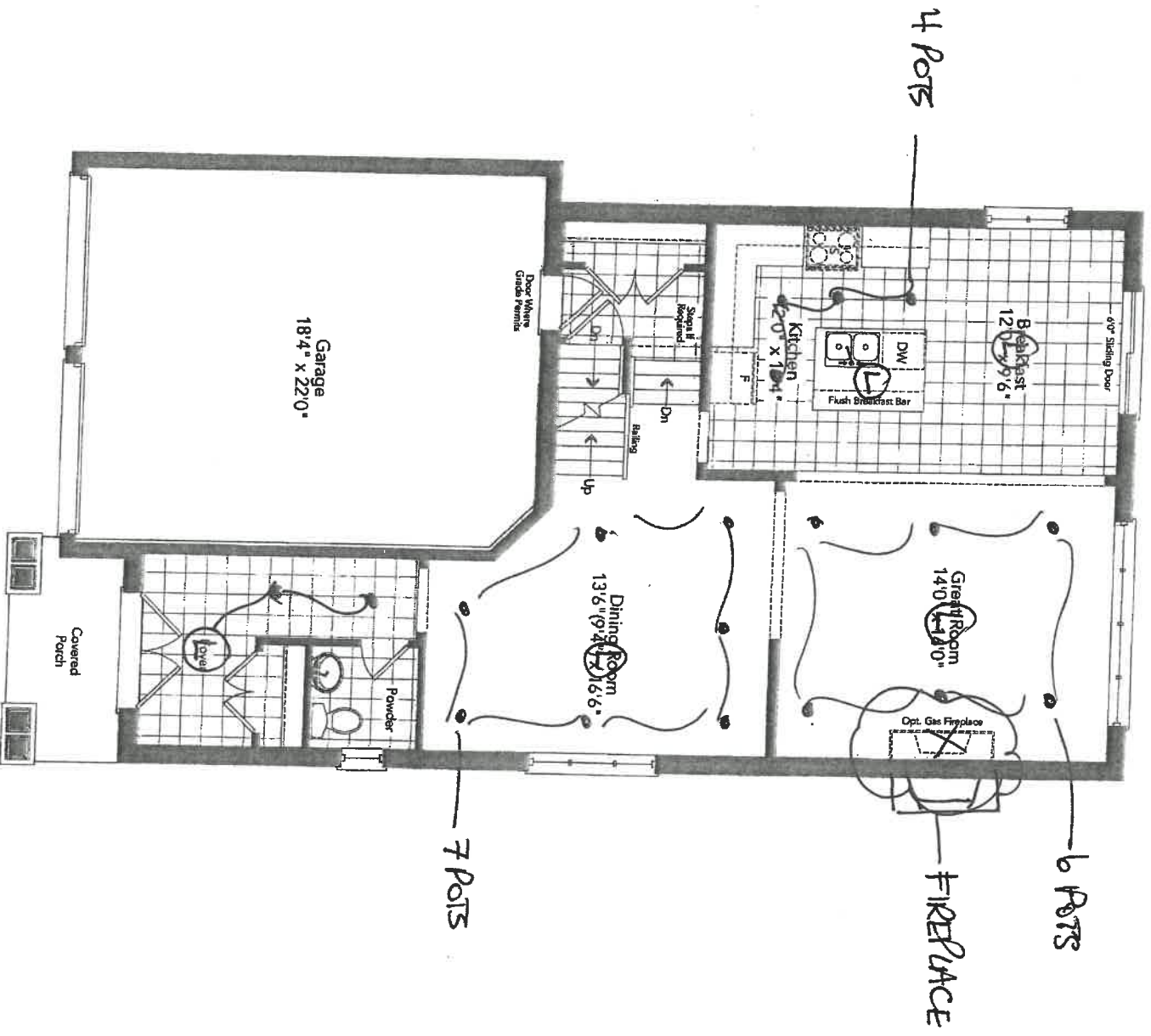
NCOR HOMES COLOUR CH.

CABINETRY / COUNTERTOPS						
	DOOR STYLE	HARDWARE	COUNTERTOP	EDGE		
Kitchen UPPERS	EURO - PIANOVO MATTE		ABSOLUTE BLANC (4)	C		
Kitchen LOWERS & FRIDGE	EUR - OLMO CARISMO		ABSOLUTE BLANC (4)	C		
Kitchen Island	EUR - OLMO CARISMO		ABSOLUTE BLANC (4)	C		
Kitchen DOOR HANDLES	DOOR HANDLES - TAB PULL	➔				
Kitchen DRAWER KNOBS	DRAWER KNOBS - K1700BC	➔				
Master Ensuite	EURO - HIGH GLOSS WHITE	➔	K-STONE BLACK (1)	H		
Main	EURO - HIGH GLOSS WHITE	➔	K-STONE BLACK (1)	H		
Twin	N/A					
Powder Room	N/A					
Laundry	SLAB PVC - WHITE		WHITE 949-58			
TILES						
Main Foyer	ALL OVER SERIES WHITE 24 X 24 (6)			INSERTS	THRESHOLDS	
Powder Room	ALL OVER SERIES WHITE 24 X 24 (6)					
SIDE HALL	ALL OVER SERIES WHITE 24 X 24 (6)					
Main Hall						
Kitchen Floor	HARDWOOD					
Breakfast Floor	HARDWOOD					
Kitchen Bk.Splash	SMOKED/TINTED MIRROR (GREY IN COLOUR) *NOT BEHIND STOVE					
Kitchen Bk.Splash STOVE	CRISTALLO GLASS TEAL BLUE 2 X 12 **STACKED (ABOVE STOVE ONLY & BEHIND CHIMNEY)					
Laundry						
Mstr Ensuite Floor	ROMA STATUARIO 12 X 24 STACKED (5)					
Mstr Ens Shower	LUMINA WHITE MATTE 10 X 30					
Master Shower Floor	BIANCO CARRARA 2 X 2 MARBLE					
Master Shower Jamb	WHITE QTZ					
Main Bath Floor	ROMA STATUARIO 12 X 24 STACKED (5)					
Main Bath Tub Wall	TWILL WHITE 8 X 10 (1)					
Twin Bath Floor	N/A					
Twin Ensuite Tub Wall	N/A					
HARDWOOD / CARPET						
Living Room	N/A					
Dining Room	VINTAGE MAPLE - 5" ARIES (5)					
Family/Great Room	VINTAGE MAPLE - 5" ARIES (5)					
Den/Study/parlour/Library	N/A					
Kitchen *(Waiver)	N/A					
Main Foyer *(Waiver)	N/A					
Main Hall	VINTAGE MAPLE - 5" ARIES (5)					
Upper Hall	VINTAGE MAPLE - 5" ARIES (5)					
Master Bedroom	OPENING NIGHT - COLOUR T20					
Bedroom 2	OPENING NIGHT - COLOUR T20					
Bedroom 3	OPENING NIGHT - COLOUR T20					
Bedroom 4	OPENING NIGHT - COLOUR T20					
Carpet Underpad	STANDARD					
Basement Foyer	N/A					
FIREPLACES						
LOCATION	GREAT ROOM	Opt. Surround		MANTLE		NF8
LOCATION		Opt. Surround		MANTLE		
MIRRORS & ACCESSORIES						
Mirrors	YES	Opt. Crown Moulding		PLASTER MOULDING		
Bathroom Accessories	MOEN UPGRADE	Location		N/A		
Purchaser has reviewed the colour chart						
****FOR TRADE USE****						
				INNISFIL	128	
Any upgrades in the colour chart must be accompanied with a PES. It is the responsibility of all Trades to inform the builder of any discrepancies on sketches, PES and/or colour charts PRIOR to installation.						
				Purchaser Initial	Vendor	
				** PAGE 1 OF 2 **		

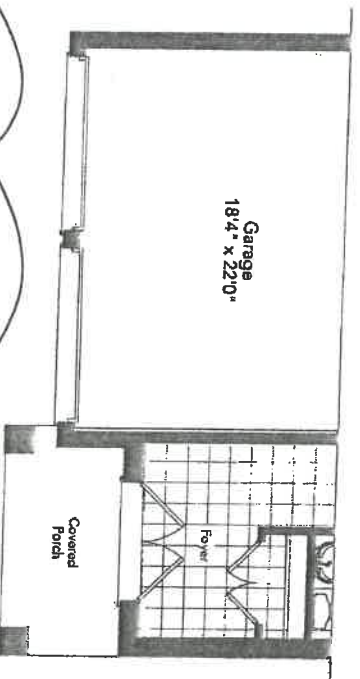
NCOR HOMES COLOUR CH.

<p>Any upgrades in the colour chart must be accompanied with a PES.</p> <p>It is the responsibility of <u>all Trades</u> to inform the builder of any discrepancies on sketches, PES and/or colour charts <u>PRIOR to installation.</u></p>		<p>Décor Consultant Signature</p> 	<p>Date</p> <p>JUN 20 2017</p>
---	---	--	--------------------------------

Elevation A & B 2297 sq.ft.



~~Ground Floor~~ Elevation A



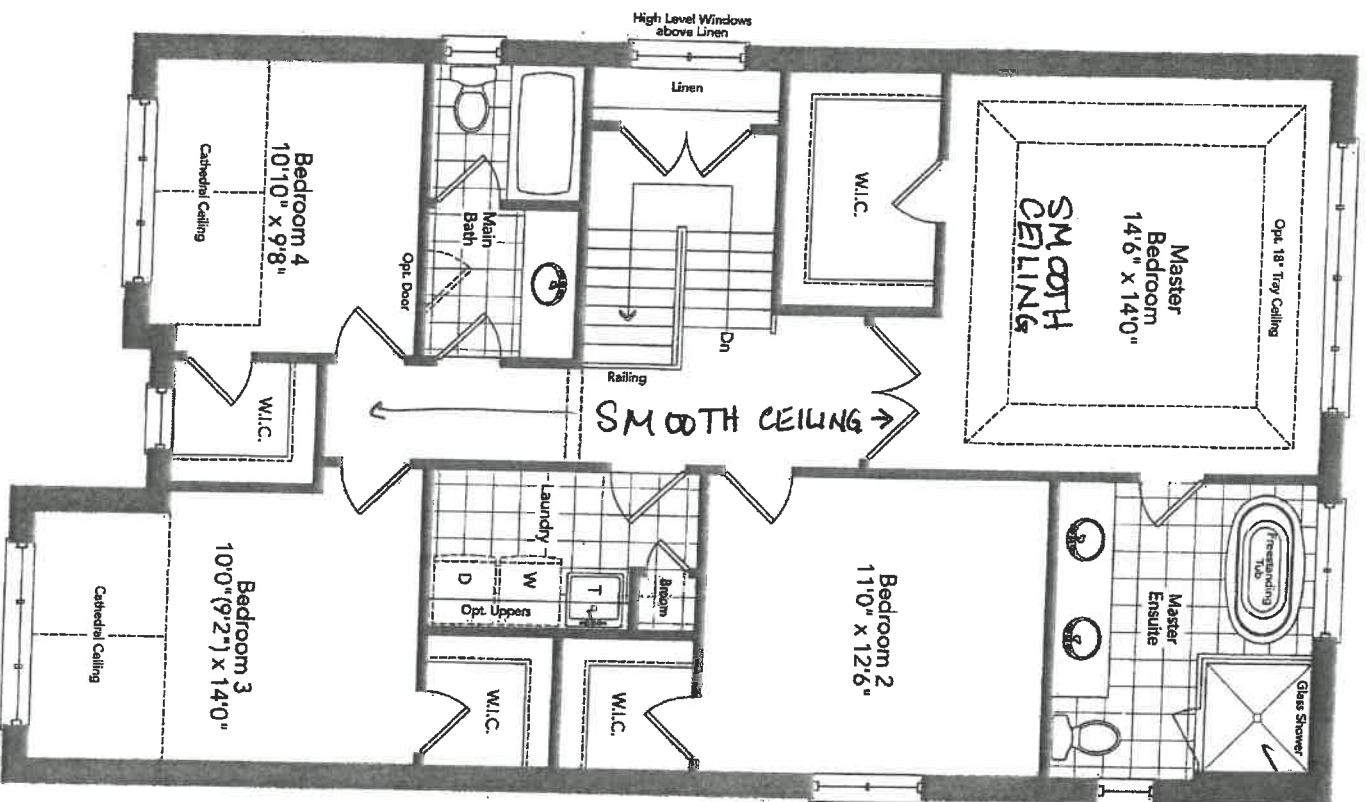
Partial Ground Floor Elevation B

- 8 Foot EWD
- 8 Foot INT. DOORS
- SMOOTH CEILING

LOT 128

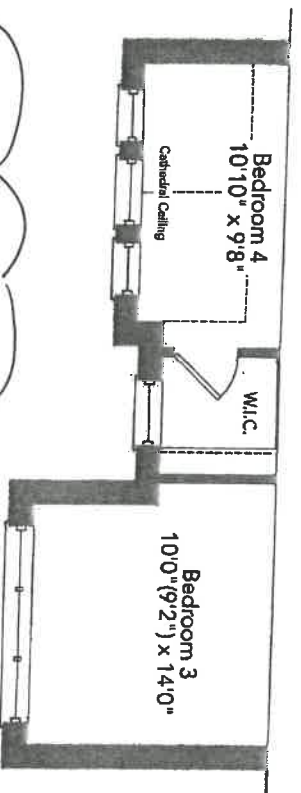
GALLEY 36-05

JUN 20 2017



FRAMELESS

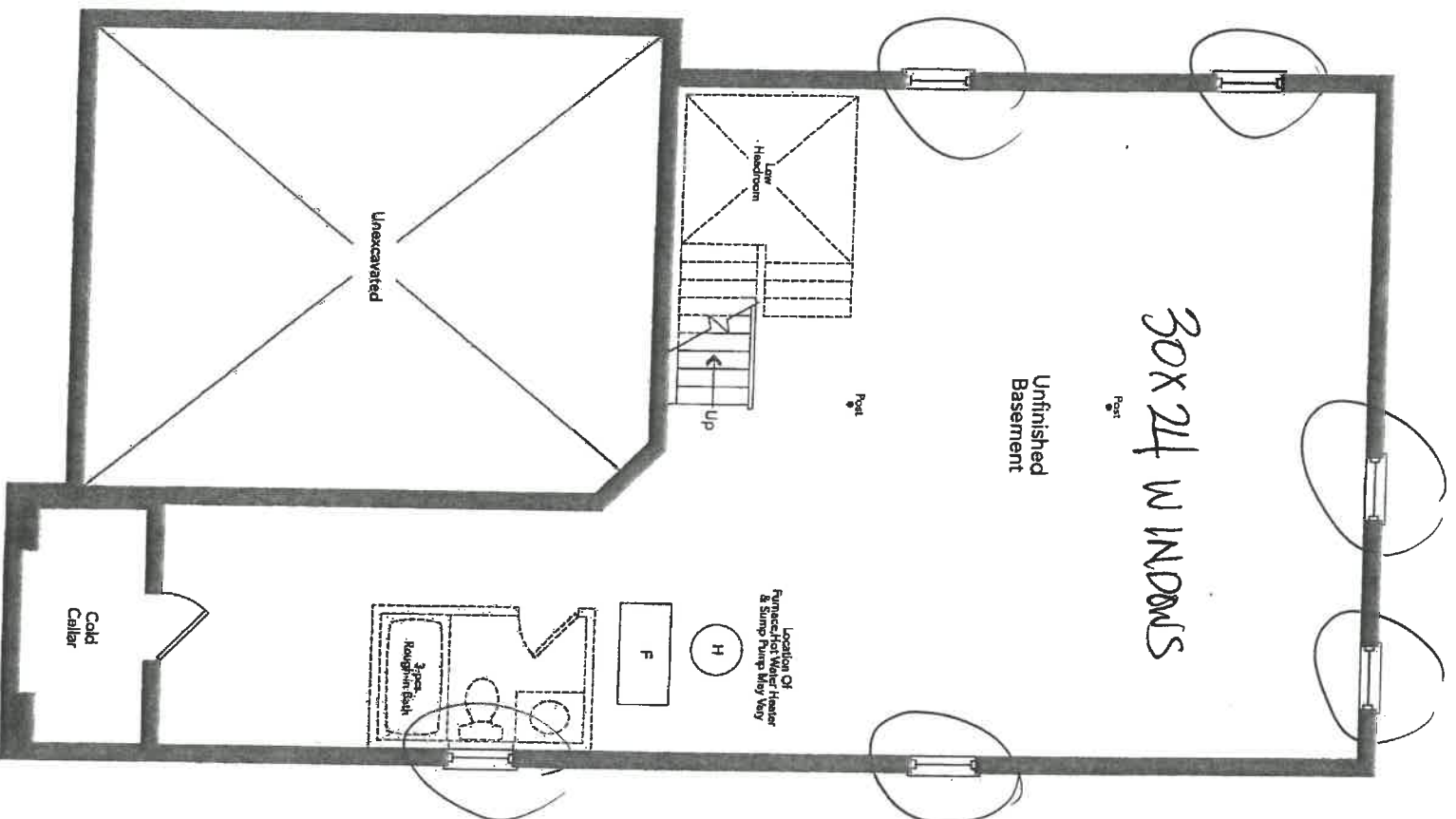
~~Second Floor~~
~~Elevation A~~



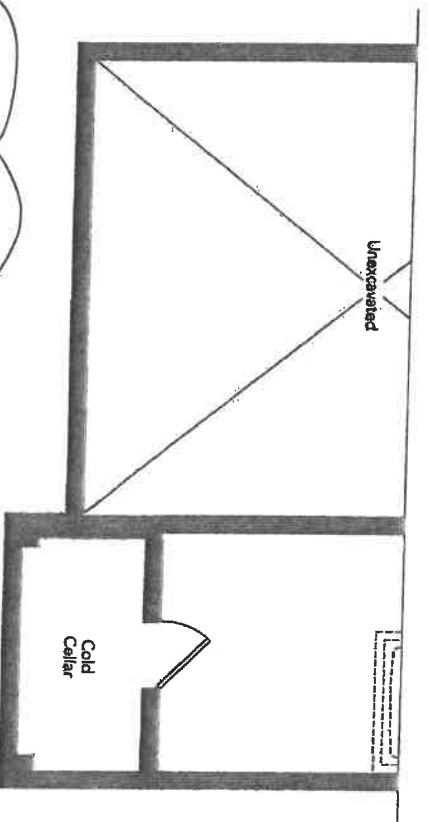
Partial Second Floor
Elevation B

LOT 128
JUN 20 2017

GALLEY 36-05



~~Basement~~
~~Elevation A~~



Partial Basement
Elevation B

LOT 128
JUN 20 2017

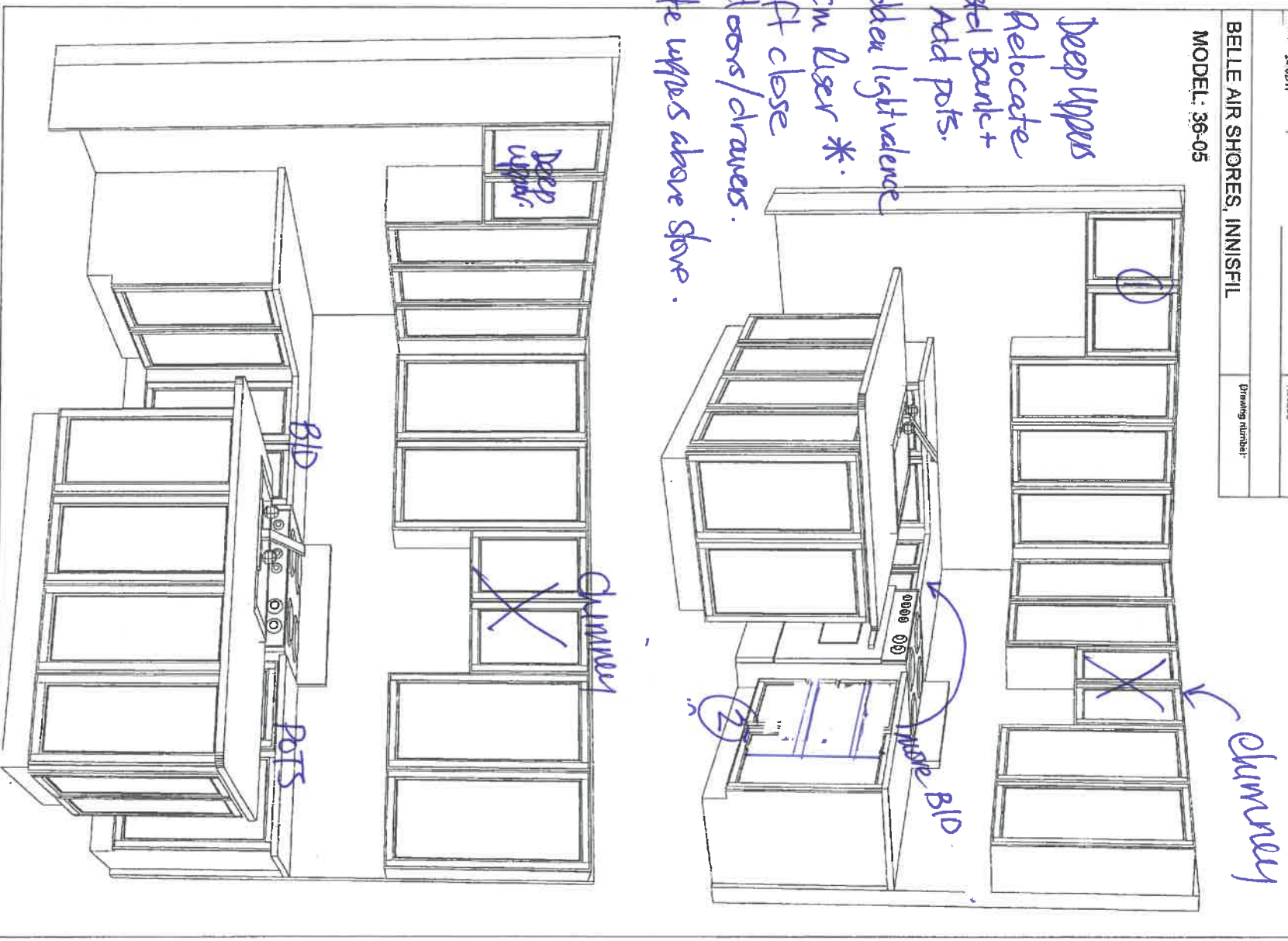
GALLEY 36-05

Handwritten signature/initials

New Image Kitchens Inc.	
Scale:	Approved by:
Date: 24.02.17	Drawn by: MJEHR
Belle Air Shores, Innisfil	
Drawing number:	

MODEL: 36-05

- ① Deep Uppers
- ② Relocate 3rd Bank + Add pots.
- ③ ladder light valve
- ④ 8cm Liser *
- ⑤ Soft close doors/drawers.
- ⑥ Delete uppers above stove.



JUN 20 2017



Stock Sizes - Nominal



4,811 x 29,8cm
(24x12)
Cristallo Product Guide
K.C.R. TBL0212.MT

Special Order

For information regarding
other sizes, colours and
finishes please contact us

Series: Cristallo Colour: Teal Blue Finish: Matte

Additional Options



COLOUR
RANGE

Teal Blue



Ivory



Beige



Taupe



Sage



Usage

Walls

Residential
Commercial

Description

A comprehensive
collection of glass tiles
and mosaics in both
matte and glossy
finishes. Available in an
assortment of colours
that will be sure to
complement any decor.



Cristallo Product Guide

WPS 5

2x12

Product Specification Sheet

BLANCO PRECIS U 2

SILGRANT®



BLANCO PRECIS Colour Finish Model No.
U 2



White
reversible
401705



Truffle
401179



Metallic gray
reversible
401681



Cinder
401415



Café
400581



Biscuit
401818



Anthracite
400580

WARRANTY

Limited Lifetime warranty

Code/Standards Compliance

BLANCO sinks and faucets are third-party tested and certified to CSA, cUPC, ANSI/ASME and NSF standards and listed by applicable certification bodies. For more information on individual product listings, contact our office or listing organization.

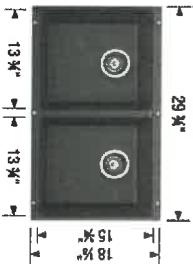
BLANCO CANADA
100 Corporation Drive
Brampton, ON L6S 6B5

Tel: 905 494 2400
Fax: 905 494 2425
www.blancocanada.com

Toll Free: 1 877 425 2626
Toll Free: 1 877 825 2626

© 2016 BLANCO CANADA

PRODUCT DIMENSIONS



FEATURES / SPECIFICATIONS

- Made in Canada and Germany
- SILGRANT® - natural granite composite material
- Exceptional resistance to heat, scratches and impact
- Repellent material – does not absorb any liquids, acids or stains
- Non-porous surface does not require use of any harsh chemicals
- Includes Hygienic+Plus surface protection formula against bacteria
- Rear-positioned and centred drain hole maximizes usable bowl and cabinet storage
- Virtually flat sink bottom prevents glassware from tipping over
- Limited Lifetime Warranty

DESIGN AND PLANNING TIPS

Cabinet Size: 33" (840 mm)
Bowl depth: 8" (205 mm) / 8" (205 mm)
Depending on cabinet construction, a different cabinet size may be required.
Consult the cabinet manufacturer.

12810N

JUN 20 2017

Method™

Traditional | Transitional | Modern
*A modern blend of flat planes and curves
gives Method faucets and accessories an chic look.*

LOT 128
1NN



Single Handle Vessel Lav
Faucet with Lift Rod Drain
and Grid Drain Kit ^

Model 6810 / A2020



Single Handle
Lav Faucet
with Lift Rod Drain ^

Model 6810



Two Handle Adjustable Widespread
(8" - 16") Lav Faucet
with Lift Rod Drain

Model T6820 / 69000



Two Handle
Roman Tub Faucet

Model T986 / 4796

Tub Drain Half Kits Available**

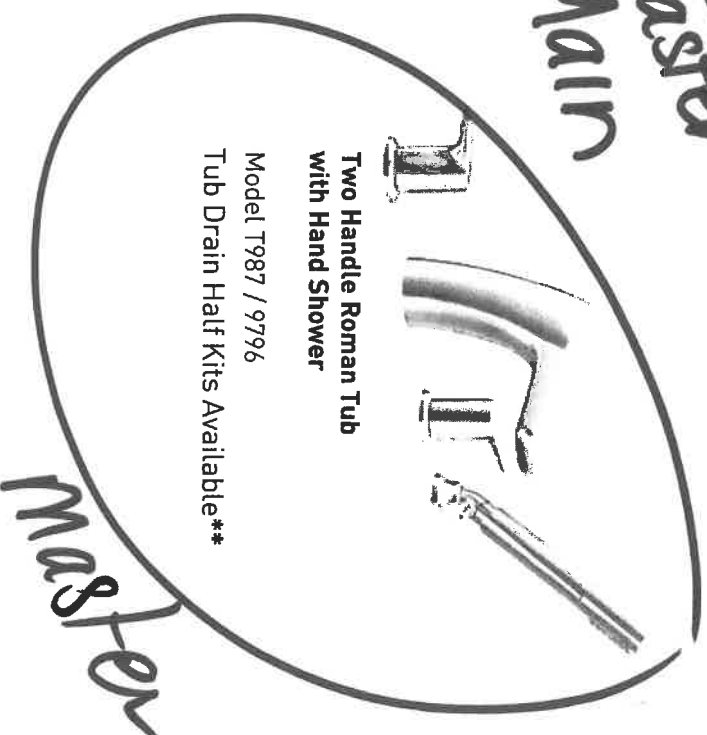


Two Handle Roman Tub
with Hand Shower

Model T987 / 9796

Tub Drain Half Kits Available**

Master
Main



Master

FINISH OPTIONS:



C BN

To order, combine the model number with one of these finish letter(s):
LifeShine® Brushed Nickel (BN).

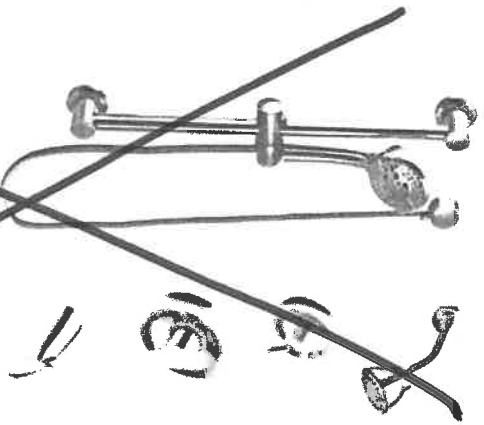
To order Chrome (C) model, use model number only.

^ Deckplate included

** T90331 / 140680

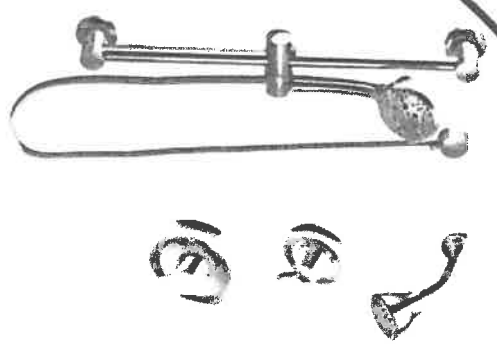
Method™
Traditional | Transitional | Modern
*A modern blend of flat planes and curves
gives Method faucets and accessories an chic look.*

128
1BN



**Posi-Temp® Tub/Shower Faucet
with 3 Function Transfer Valve/Trim
and Slide Bar with Hand Shower ***

Model T62803EP / 3372 / 128284 / T4171 /
62320 / 3669EP / A725



**Posi-Temp® Shower Only
with 3 Function Diverter Valve
and Slide Bar with Hand Shower ***

Model T62802EP / 3372 / T4171 / 62320 /
3669EP / A725

master

FINISH OPTIONS:



To order, combine the model number with one of these finish letter(s):
LifeShine® Brushed Nickel (BN).
To order Chrome (C) model, use model number only.
* Please see vertical spa guide for installation #700106

Method™

Traditional | Transitional | Modern
*A modern blend of flat planes and curves
gives Method faucets and accessories an chic look.*

128
INN



Toilet Tank Lever
Model YB2401



Double Robe Hook
Model YB2403



Pivoting Paper Holder
Model YB2408



Mini Towel Bar
Model YB2486

Brushed



18" Towel Bar
Model YB2418



24" Towel Bar
Model YB2424

Brushed
Main
Brushed

FINISH OPTIONS:



CH BN

To order, combine the model number with one of these finish letter(s):
Chrome (CH) & LifeShine® Brushed Nickel (BN).

PROOFIT
INSTALLATION SYSTEM



COAST Wholesale
APPLIANCES

COAST WHOLESALE APPLIANCES INC
#1 - 1748 CREDITSTONE ROAD, VAUGHAN, ON
L4K 6V8 *** TOLL FREE 1-888-745-0622
PH:(905)303-6909 FX:(905)856-5325



"Innovative Products for Builders, Designers & Home Owners"

Sold ZANCOR HOMES (INNISFIL) LTD.
To: (BELLE AIRE SHORES)
137 BOWES ROAD
CONCORD
ON L4K 1H3

Ship ZANCOR HOMES (INNISFIL) LTD.
To: (BELLE AIRE SHORES)
137 BOWES ROAD
CONCORD
ON L4K 1H3

SALES ORDER
QUOTATION

905-738-7010

Sales Representatives		P.O.#	Terms	Prov.Tax #	Customer #	Quote #
F8 WAYNE W18,7		LOT 151 BELLE AIRE SHO	NET 30 DAYS		G0481	1913881-01
		Shipping Location	Date Quoted	Date Required		Document Type
Quantity	Model / Description	WOODBRIDGE WHSE	01 JUN 17	15 JUN 17		SALES PROPOSAL
Quoted					Price	Extension
1	KRFC302ESS	KITCHEN AID 22CUFT FRENCH DOOR B/M SS 36", COUNTER DEPTH REFRIGERATOR				
1	YKSEB900ESS	KITCHENAID AQUA LIFT ELECTRIC SS SLIDE-IN RANGE				
1	GLAS30SS600-B	FABER GLASSY 30" SS WALL HOOD 600 CFM				
1	WDF320PADS	WHIRLPOOL PLASTIC TUB D/WASHER S/S 3 CYCLES,4 OPTIONS,13 SETTINGS				
1	NTW4516FW	AMANA 4.0 CUFT TOP LOAD WASHER WHT				
1	YNED4656EW	AMANA 6.5 CUFT DRYER 11 CYCLES,3 TEMP WHT, AUTO DRY				
1	48372	EZ FLO STAINLESS STEEL BRAIDED 6" WASHING MACHINE FILL HOSE				
1	INSTALLATION HOOKUP	INSTALLATION - HOOKUP WATERLINE TO FRIDG				
1	INSTALLATION/H/FAN	INSTALLATION OF HOOD FAN				
1	INSTALLATION OF STND	INSTALLATION OF STANDARD PACKAGE				
1	PFA	PACKAGE FREIGHT ALLOWANCE INCLUDED				
11						SUBTC

"Quote Valid for 15 Days from Quote Date"

SUBTC
PST
DEL/FL
HST
TOTAL

Sales Copy

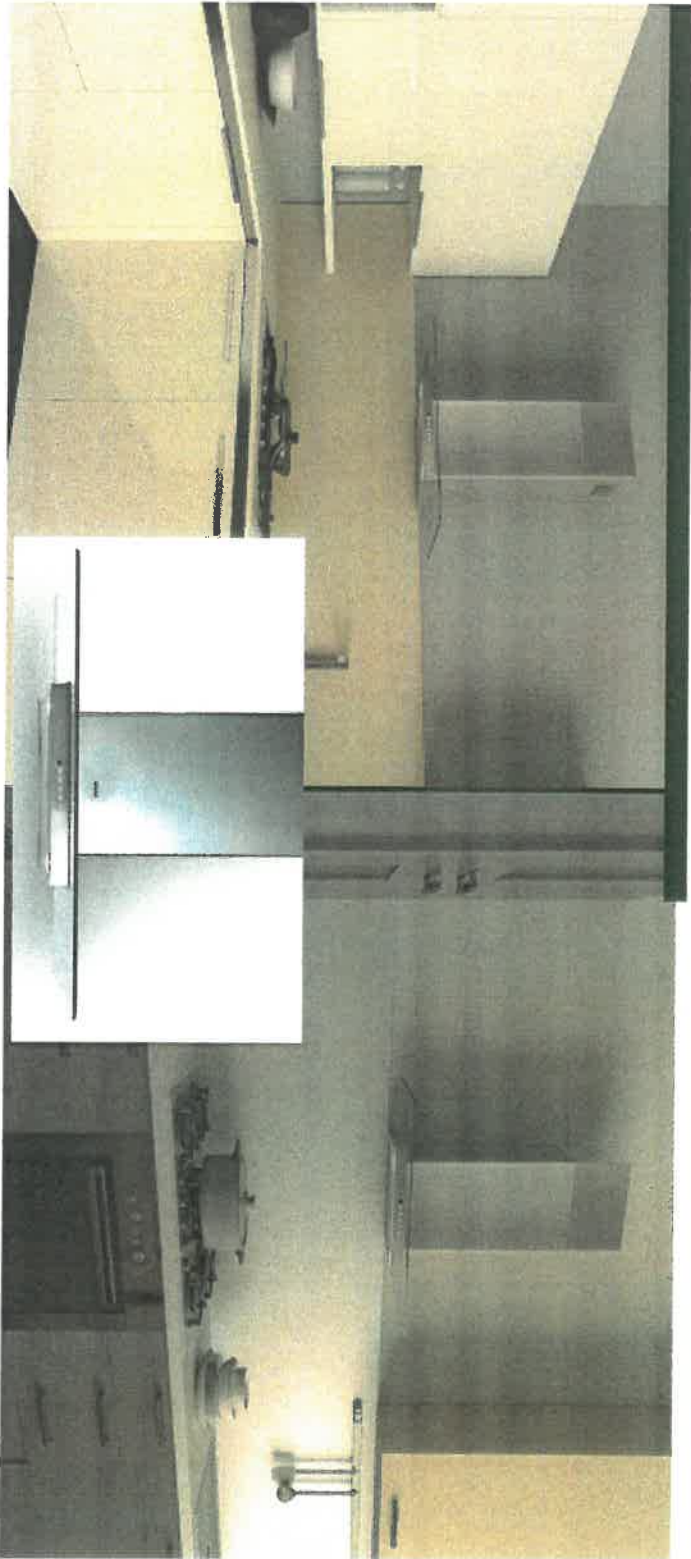
NOW 16 LOCATIONS TO SERVE YOU

www.coastappliances.com

GLASSY WALL RANGE HOOD



AN UPDATED GLASS WALL HOOD WITH ADVANCED FEATURES. The new and improved Glassy by Faber features a stunning flat glass body with advanced electronic controls, an optional remote control and two level energy efficient LED lights. Available with a 600 or 300 cfm motors, the Glassy delivers your choice of performance level in a stylish and contemporary flat glass wall range hood.



AVAILABLE MODELS

Model #	Size / Color	Motor Class (CFM)	Sound Levels (sones)
GLAS30SS600-B	30" Stainless	600 CFM	2.8 - 7.5
GLAS36SS600-B	36" Stainless	600 CFM	2.8 - 7.5
GLAS30SS300-B	30" Stainless	300 CFM	2.5 - 5.0
GLAS36SS300-B	36" Stainless	300 CFM	2.5 - 5.0

LOT 128
1mm

KEY FEATURES



Backlit electronic controls
Backlit electronic controls with a White LED light to indicate the current speed and two level lighting



LED bulbs
Low consumption, 1 watt LED bulbs with a dimmer light up your cooking but use very little energy



Remote Control (optional)
Control all features of the hood from the convenience of a wireless remote control (sold separately)



Ductless Chimney
An upper chimney with return air grates on the side is included. Just purchase the ductless kit to complete the ductless installation.

GLASSY WALL RANGE HOOD



SPECIFICATIONS

min. / max. ceiling height	8' 2" - 9' 3/16"
convertible to ductless / recirculating	yes - kit sold separately
canopy depth / height	18 1/2" d / 1 11/16" h
high ceiling kit	yes - reaches up to 11' ceilings
controls	4 speed electronic w/ white led
lighting	2 x 1 (w) led - two level
ducting top	6" round
grease filters	dishwasher safe mesh
10 minute intensive speed	yes
15 minute auto shut off	yes
ADA compliant	yes (with remote control purchase)
power cord included	yes
AC power	320 watts / 2.7 amps (600 cfm model)

PERFORMANCE (600 CFM Motor shown)

	SPEED	1	2	3	BOOST
CFM		150	350	450	560
Sones		2.8	4.3	6.0	7.5

ACCESSORIES

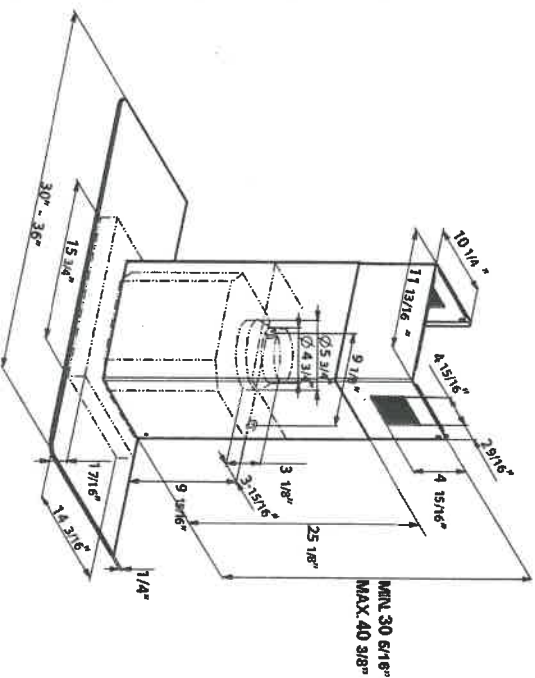
- # FILTER2 -**
Charcoal Filter Kit
High quality charcoal filter for use when recirculating the air back into the kitchen. Filters out odor and should be replaced every 6 months

REMCTRL -
Remote Control
Control all features of the hood from the convenience of a wireless remote control

HIGH3 -
High Ceiling Kit
High ceiling kit replaces the upper chimney with a taller chimney to reach up to 10' 9 10/16"

WIREBOX -
Fixed Wiring Box
Replace the power cord with a hard wired box to power the range hood
- # DUCT4 -**
Ductless Conversion Kit
To convert the Glassy to ductless, this kit includes charcoal filters and a diverter to send the air thru the side grates on the upper chimney.

MUDAMPER6 / MUDAMPER8 -
Universal Make-Up Air Damper
Satisfies make-up air requirements, this kit uses an air switch to activate the make-up air damper to open and bring fresh air into the home when the hood fan is on. It then closes tightly when the hood is off. The CFM level is not reduced with this accessory.



DIMENSIONS



WARNING! Product specifications are subject to change without notification. Consult the installation instructions before you begin installing this range hood



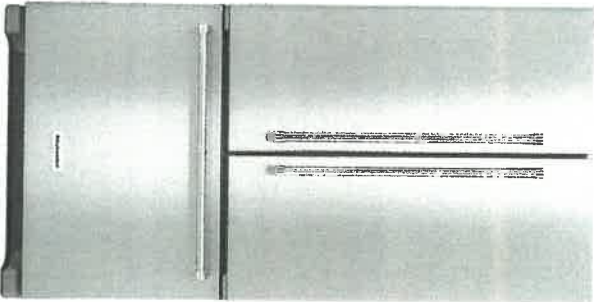
Rev: 6/16

2 Cabot Road Hudson, MA 01749 • TEL: (508) 358-5353 • E-Mail: info@faberonline.com www.faberonline.com

Imagined in Italy

JUN 20 2017

KitchenAid



NEW


22 cu. ft. 36-Inch Width Counter Depth French Door Refrigerator with Interior Dispense

3.9

[229 Reviews](#) [Write a Review](#)

This 72-inch refrigerator is three inches taller than a standard counter-depth refrigerator. It fills the gap that can be left above many refrigerators, adding to its integrated appeal. A pull-out freezer drawer allows you to organize frozen items on three levels. And with the ExtendFresh™ Temperature Management System all of your ingredients will be held at the optimum temperature to maximize their flavor and texture.

AVAILABLE COLOR OPTIONS

☒  Stainless Steel - KRFC30ZE5S

FEATURES

ExtendFresh™ Plus Temperature Management System
Ensures ingredients remain fresh for maximum taste and texture using a sensor-controlled system with a variable-capacity compressor. There is one thermostat in the freezer and one thermostat in the refrigerator.

Interior Water Dispenser
Provides easy access to filtered water and is conveniently located for one-hand operation.

Produce Preserver
Absorbs ethylene gas emitted by many fruits and vegetables, causing them to over-ripen. By removing ethylene, the produce preserver helps extend freshness.

Additional Features

Humidity Controlled Crispers
Provide a dedicated storage option with adjustable humidity levels to keep fresh food in an optimal environment.

Pull-Out Tri-Level Freezer Drawer
Features slide-out baskets with mats to help keep the freezer clean and organized.

LED Lighting
Illuminates the inside of the refrigerator and freezer giving for better visibility. Unlike incandescent bulbs, LED lights use less energy, are maintenance-free and never need to be replaced.

Max Cool
When selected, automatically adjusts the temperature in the refrigerator and freezer to the lowest setting when appropriate. This keeps the refrigerator at the ideal temperature when loading groceries, the doors are frequently opened or in higher room temperatures.

FreshChill™ Temperature-Controlled Full-Width Pantry
Lets you properly store everything from meats to produce with a manual temperature setting. It gives you total control over of the amount of cool air that enters the drawer.

SatinGlide® System
Uses space-efficient, under-mounted pans with rollers and glides for satisfyingly smooth operation.
Star-K Certified
STAR-K KOSHER CERTIFICATION for use on the Jewish Sabbath and other religious holidays.

Automatic Ice Maker
Ensures a constant supply of ice on hand at all times for entertaining and everyday use.

Metallic Accents on Shelf Trim
Provide a touch of elegance and complement the high gloss interior finish of the refrigerator.

Metal Wine Rack
Provides a durable storage solution for up to four bottles of wine or 2-liter containers and can be removed for additional storage flexibility.

76128

KitchenAid®

FOR THE WAY IT'S MADE.®

Bottom Mount Refrigerator

PRODUCT MODEL NUMBERS

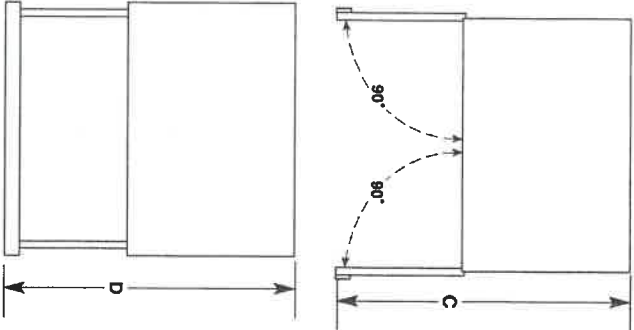
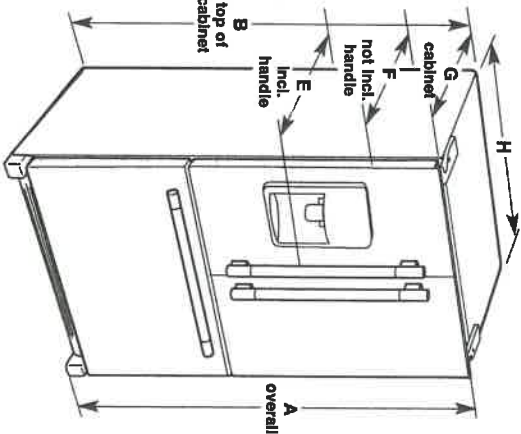
KRFC302E

Electrical: A 115 volt, 60 Hz, AC only 15- or 20-amp fused, grounded electrical supply is required. It is recommended that a separate circuit serving only your refrigerator and approved accessories be provided. Use an outlet that cannot be turned off by a switch. Do not use an extension cord.

Water: A cold water supply with water pressure of between 35 and 120 psi (241 and 827 kPa) is required to operate the water dispenser and ice maker. If you have questions about your water pressure, call a licensed, qualified plumber.

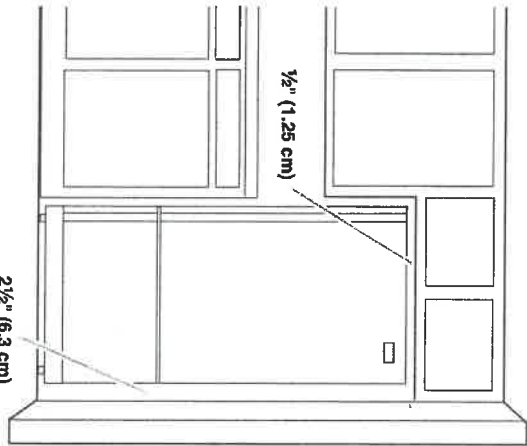
Reverse Osmosis Water Supply:

IMPORTANT: The pressure of the water supply coming out of a reverse osmosis system going to the water inlet valve of the refrigerator needs to be between 35 and 120 psi (241 and 827 kPa).



Model Size	Height - Overall "A"	Height - Top of Cabinet "B"	Depth - Doors Open 90° "C"	Depth - Drawer Open "D"	Depth - With Handles "E"	Depth - Without Handles "F"	Depth - Cabinet Only "G"	Width - Cabinet "H"
21.9	72" (182.9 cm)	71 3/8" (181.3 cm)	44 1/8" (112.1 cm)	45 1/4" (114.9 cm)	30 1/4" (76.8 cm)	27 3/4" (70.5 cm)	24 3/8" (62.5 cm)	35 3/8" (90.8 cm)

LOCATION REQUIREMENTS



IMPORTANT: This refrigerator is designed for indoor, household use only.

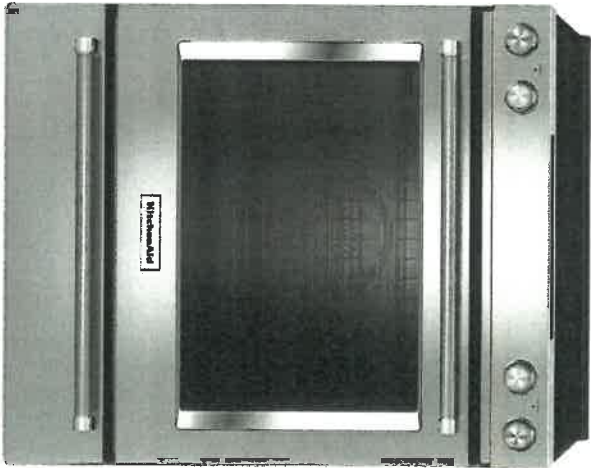
To ensure proper ventilation for your refrigerator, allow for 1/2" (1.25 cm) of space on each side and at the top. Allow for 1" (2.54 cm) of space behind the refrigerator. If your refrigerator has an ice maker, allow extra space at the back for the water line connections. When installing your refrigerator next to a fixed wall, leave 2 1/2" (6.3 cm) minimum on the hinge side (some models require more) to allow for the door to swing open.

NOTE: This refrigerator is intended for use in a location where the temperature ranges from a minimum of 55°F (13°C) to a maximum of 110°F (43°C). The preferred room temperature range for optimum performance, which reduces electricity usage and provides superior cooling, is between 60°F (15°C) and 90°F (32°C). It is recommended that you do not install the refrigerator near a heat source, such as an oven or radiator.

101 128
mm

JUN 20 2017

KitchenAid®



NEW

KitchenAid® 30-Inch 5-Element Electric Convection Front Control Range with Baking Drawer

2.5

26 Reviews Write a Review

This versatile electric range provides a Baking Drawer that adds more options to the oven. The separate compartment allows you to bake at a different temperature. This range also features Even-Heat™ True Convection, helping you achieve flawless cooking results. The unique bow-tie design and convection fan ensure the entire oven is heated to, and stays at, the perfect temperature. It also has a Wireless Probe that allows you to read internal food temperatures even when you're away from the kitchen.

AVAILABLE COLOR OPTIONS

☐ **Stainless Steel** - YKSEB900ESS

FEATURES

Baking drawer

Adds more cooking options to the oven. The separate compartment allows you to keep warm, slow cook or bake at a different temperature and keep dishes

Even-Heat™ True Convection

Produces flawless results. The unique bow-tie design and convection fan ensure the inside of the entire oven is heated to, and stays at, the perfect temperature.

Wireless Probe

Lets cooks walk away from the oven without waiting away from control. Our probe can easily be set to specific temperatures, and alerts you when the desired temperature has been reached. The easy-to-read monitor lets you attend to the rest of the meal, or anything else.

Additional Features

Steam Rack

Offers the ability to provide additional moisture to the inside of the oven, enhancing cooking results.

7.1 cu ft total capacity

This electric freestanding range provides an extra-large cooking capacity in the oven for multiple dishes at once and gives you the flexibility of a separate temperature zone in the baking drawer.

EasyConvection™ Conversion System

Takes guesswork out of convection cooking by ensuring you can get exceptional results when experimenting with new or familiar recipes.

FIT Guarantee

Is our promise to flawlessly fit slide-in ranges designed for an existing cutout of 30" width, countertop depth of 24"-25", cabinet depth of 23"-24" and countertop height of 36".

Glass Touch Controls

Offer an intuitive, easy-to-use touch screen experience.

Side Trim Accessory Kit

This optional accessory kit will cover damaged countertops and unfinished edges from an old slide-in range to make them beautiful again. Trim pieces come in black, white and stainless to seamlessly match your new range.

10/1/2017

Aqualife®

Cleans your oven in less than an hour without odours and at a temperature below 200°F. This innovative system combines low heat with water to release baked-on spills.