



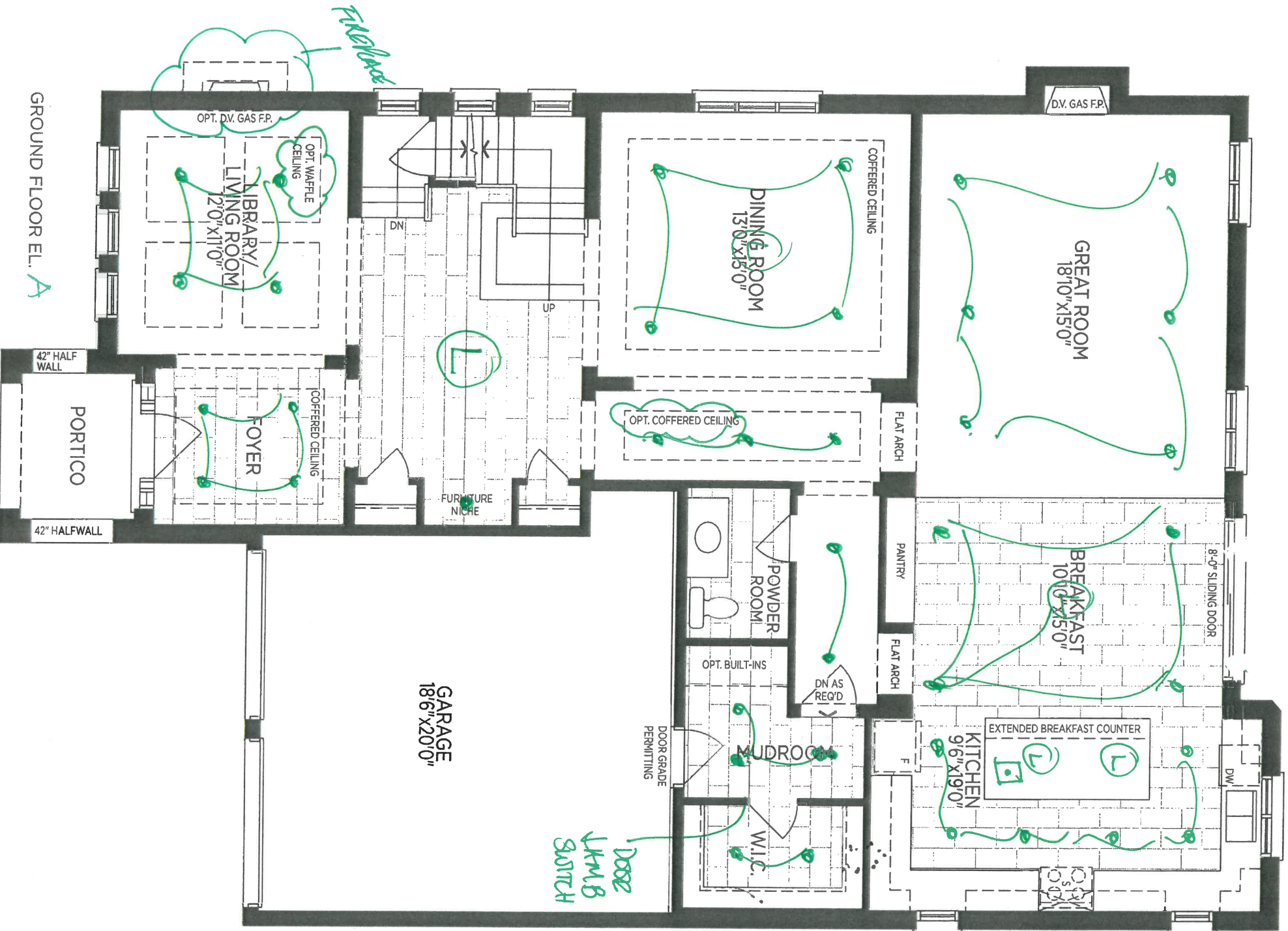
CONSTRUCTION SUMMARY
Cookstown - Zancor Homes (Cookstown) Ltd.

PURCHASER: *INVENTORY*

LOT / PHASE	HOUSE TYPE	PRINT DATE
3 / 1	50-05 BEAUMONT (A)	11-May-18

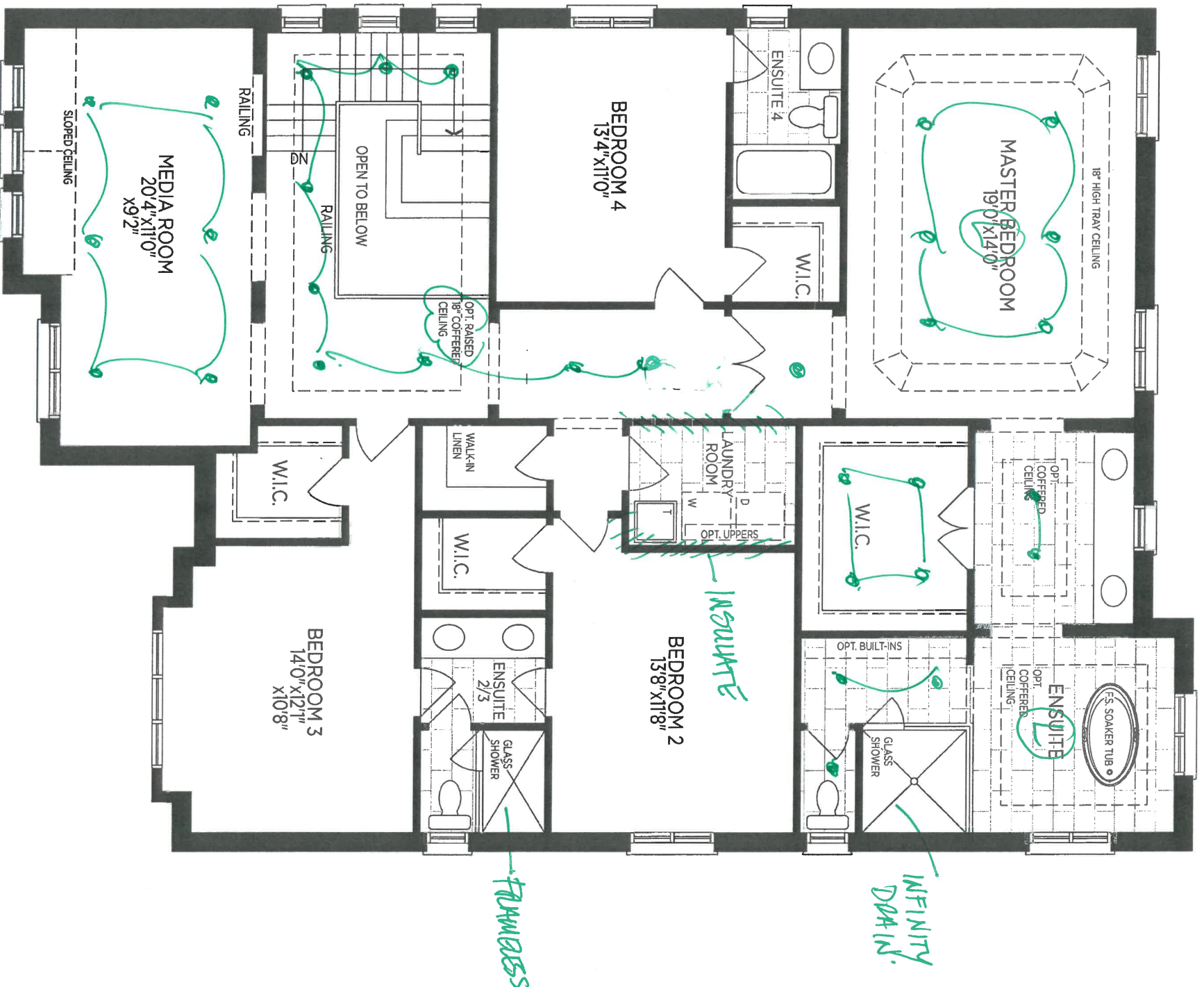
Ref#	Quantity - Description	Approved	Notes
5064	10 FOOT MAIN FLOOR CEILING HEIGHT, *includes 8 foot interior doors,, 8 foot front, rear and garage man door, transoms above windows where possible	25Sep17	
5065	9 FOOT SECOND FLOOR CEILING HEIGHT, *includes 8 foot interior doors, windows will be increased approx 8 inches where possible	25Sep17	
5066	4.00 - LARGER BASEMENT WINDOWS 30 X 24 (4)	25Sep17	
5067	SOUND INSULATION TO SECOND FLOOR LAUNDRY ROOM	25Sep17	
5068	FRAMELESS GLASS SHOWER IN LIEU OF STANDARD ENSUITE 2/3	25Sep17	
5069	24.00 - ELECTRICAL - LED POTLIGHTS (6) GREAT ROOM, DELETE STD (4) DINING SEP SWITCH, STD REMAINS (6) KITCHEN ON SEP SWITCH. MOVE STD OVER ISLAND (4) BREAKFAST, SAME SWITCH AS STD (3) MAIN HALL, DELETE STD (1) FURNITURE NICHE, SEP SWITCH	25Sep17	
5070	15.00 - ELECTRICAL - LED POTLIGHTS (4) FOYER, DELETE STD (4) LIBRARY, DELETE STD (2) POWDER ROOM HALL, DELETE STD (3) MUD ROOM, DELETE STD (2) WALK IN CLOSET, DELETE STD	25Sep17	
5071	16.00 - ELECTRICAL - LED POTLIGHTS (6) MASTER BED SEP SWITCH, STD REMAINS (2) MASTER ENSUITE IN FRONT OF VANITY, SAME SWITCH AS STD (2) & (1) MASTER ENUSITE, SEP SWITCHES (4) MASTER WIC, DELETE STD (1) MASTER BED FOYER, DELETE STD	25Sep17	
5072	ELECTRICAL - LED POTLIGHTS (9) UPPER HALL, DELETE STD (6) MEDIA ROOM, DELETE STD	25Sep17	
5073	ELECTRICAL - CAPPED INTERIOR LIGHT ABOVE TUB IN MASTER ENSUITE ON SEP SWITCH	25Sep17	
5074	ELECTRICAL - CAPPED LIGHT OVER KITCHEN ISLAND TO BE ON SAME SWITCH AS STD CAPED LIGHT	25Sep17	
5075	ELECTRICAL - DOOR JAMB LIGHT & SWITCH IN MAIN HALL CLOSET	25Sep17	
5076	WAFFLE CEILING IN LIBRARY	25Sep17	
5077	COFFER (18 INCH RAISED) IN UPPER HALL AT STAIRS	25Sep17	
5078	COFFER CEILING IN MASTER ENSUITE (X2)	25Sep17	
5079	FIREPLACE IN LIBRARY INCLUDING FOUNDATION BUMP OUT	25Sep17	
5080	PLUMBING - INFINITY DRAIN IN MASTER ENSUITE	25Sep17	
5697	INCREASE BASEMENT CEILING HEIGHT TO 9 FEET **as per construction release	11May18	

This Document is Extremely Time Sensitive - Printed 11 May 18 at 14:43



SEP 14 2017

BEAUMONT 50-05
LOT 3

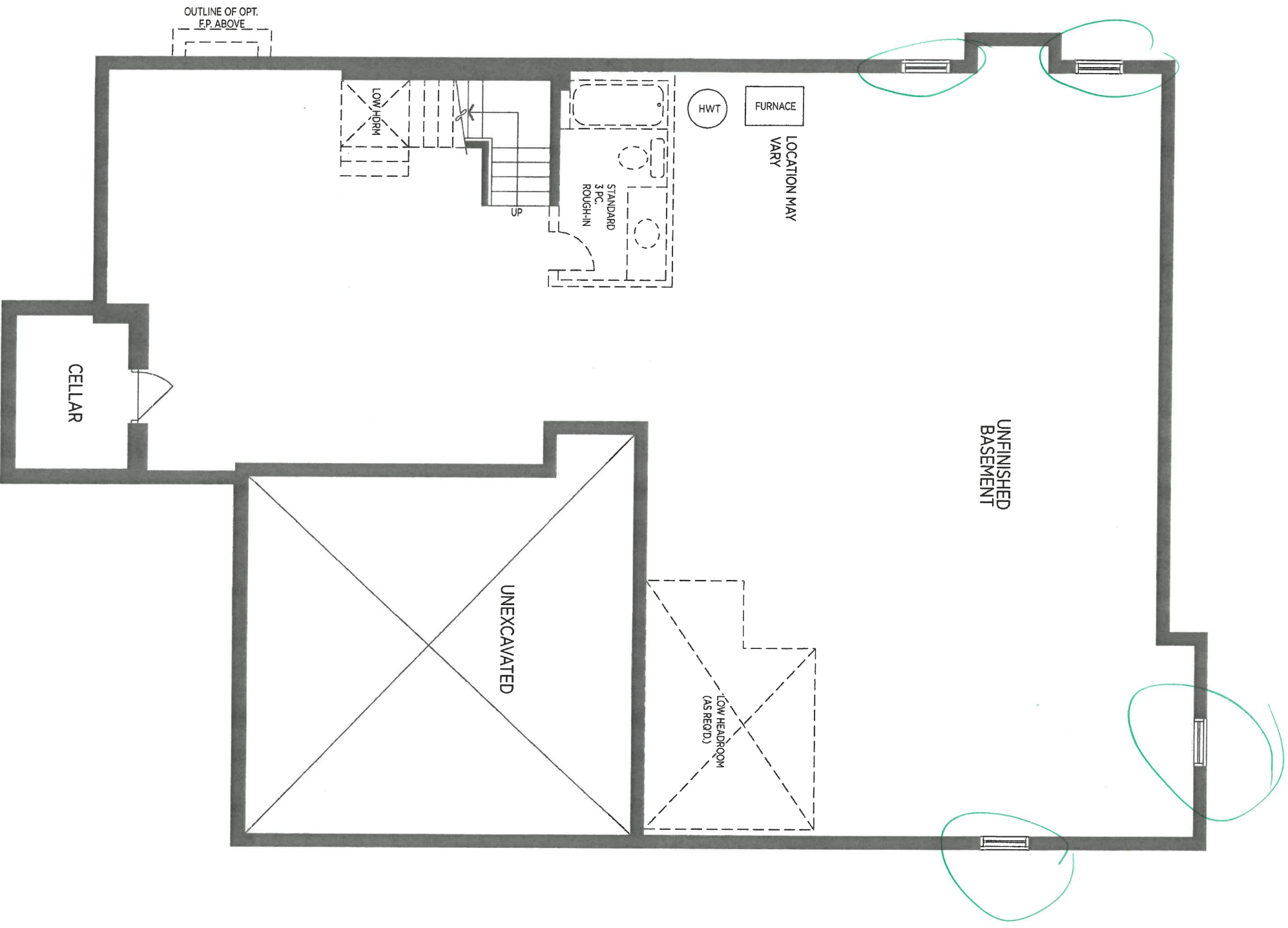


SECOND FLOOR EL A

LOT 3

BEAUMONT 50-05

SEP 14 2017



BASEMENT E.L. A (E.L. B SIMILAR)

lot 3

BEAUMONT 50-05

SEP 14 2017