

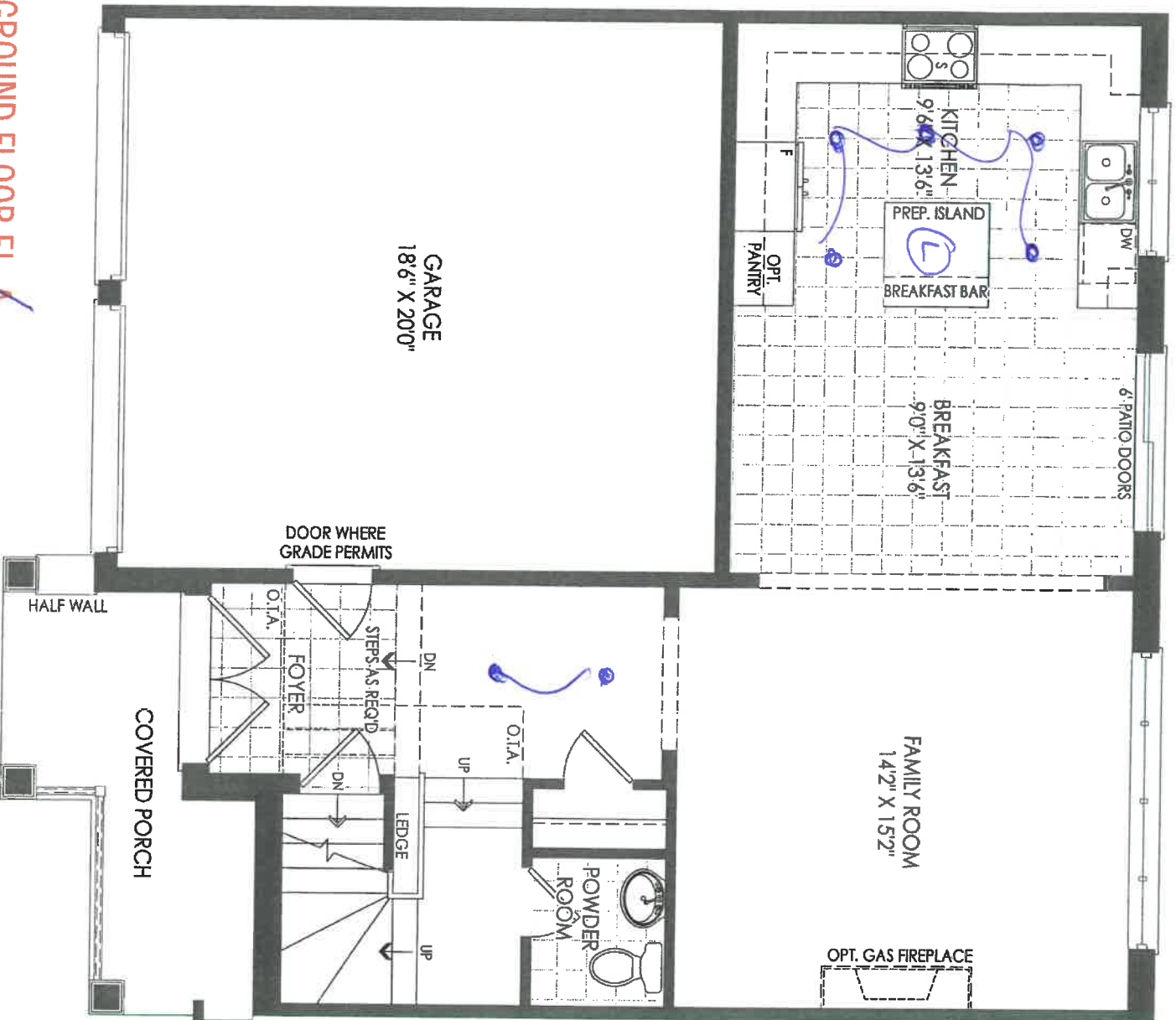
CONSTRUCTION SUMMARY OF EXTRAS  
Printed 2019-11-04 / 9:44 AM / Page 1 of 1

Site:  
Lot:  
Model:  
Purchaser:  
Phone/Email:

WASAGA  
125-2  
TH-03 AQUA (B)  
INVENTORY  
416-843-7270 / SIMONE@ZANCORHOMES.COM



DESCRIPTION		DATE SELECTED
BONUS PACKAGE: 3 PIECE STAINLESS STEEL APPLIANCES WITH WHITE TOP LOAD WASHER & DRYER	BONUS PACKAGE: STAINLESS STEEL HOOD FAN	INCLUDED IN APS INCLUDED IN APS
#1	TRAY CEILING IN MASTER *WITH SMOOTH FINISH (AS PER H/O)	AUGUST 20 2019
#2	OAK STAIRS THROUGHOUT (STANDARD)	AUGUST 20 2019
#3	3 PCE ROUGH-IN IN BASEMENT	AUGUST 20 2019
#4	SEE LOCATION OF FURNACE AND 3 PCE IN BASEMENT	AUGUST 20 2019
#1A	ELECTRICAL - 5 LED POTLIGHTS IN KITCHEN, INSTALL STANDARD ABOVE ISLAND	NOVEMBER 4 2019
#2A	ELECTRICAL - 2 LED POTLIGHTS IN MAIN HALL, DELETE STANARD	NOVEMBER 4 2019
#3A	STANDARD RAILINGS - METAL, SINGLE COLLAR WITH ALT PLAIN, TURNED OAK POST, OVAL HANDRAIL	NOVEMBER 4 2019



GROUND FLOOR EL. A

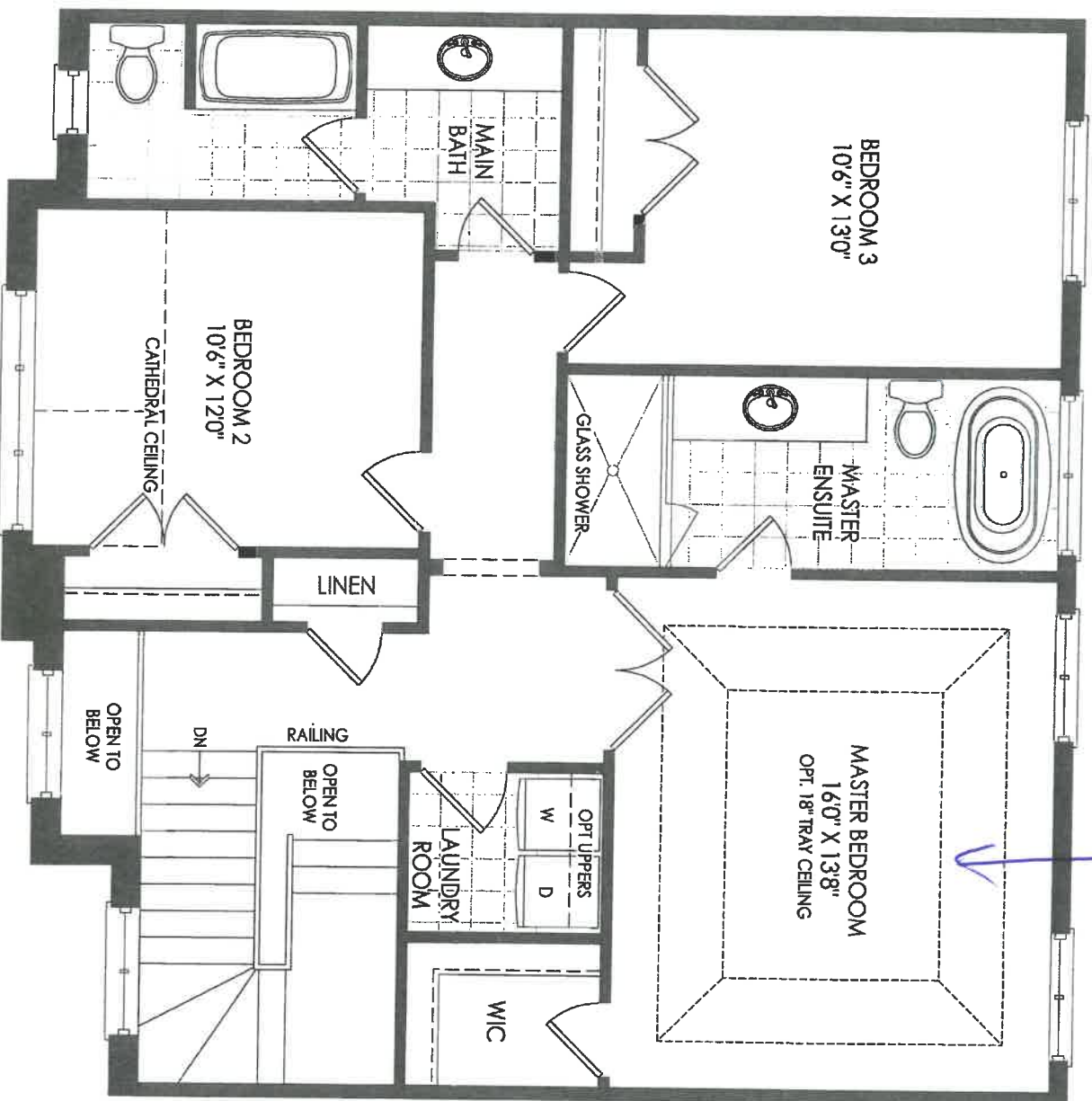
B

ONE STAIRS

THE AQUA TH-03

LOT 125-2.





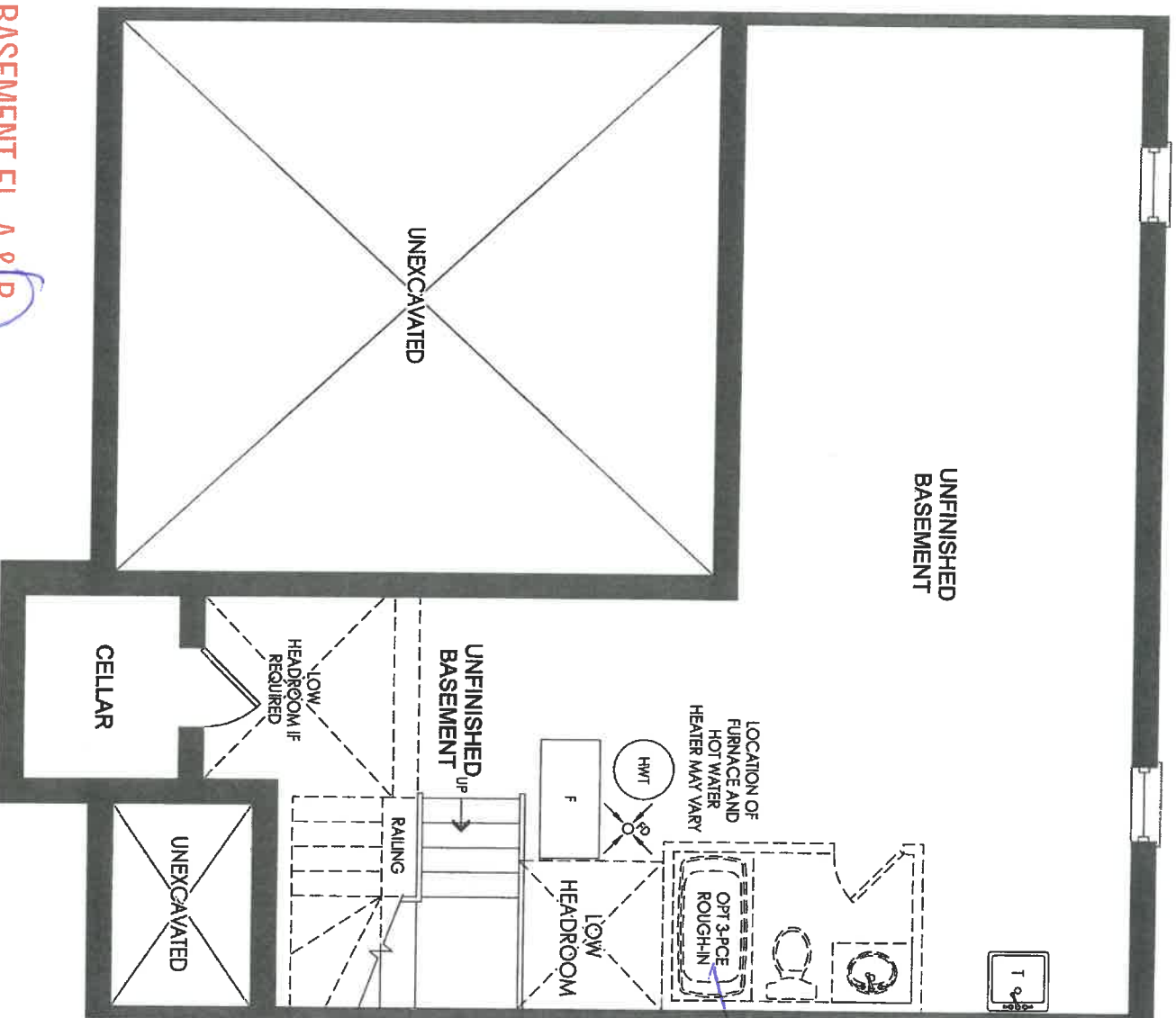
TRAY CEILING  
SMOOTH FINISH

SECOND FLOOR EL. A

B

THE AQUA TH-03

LOT 125-2

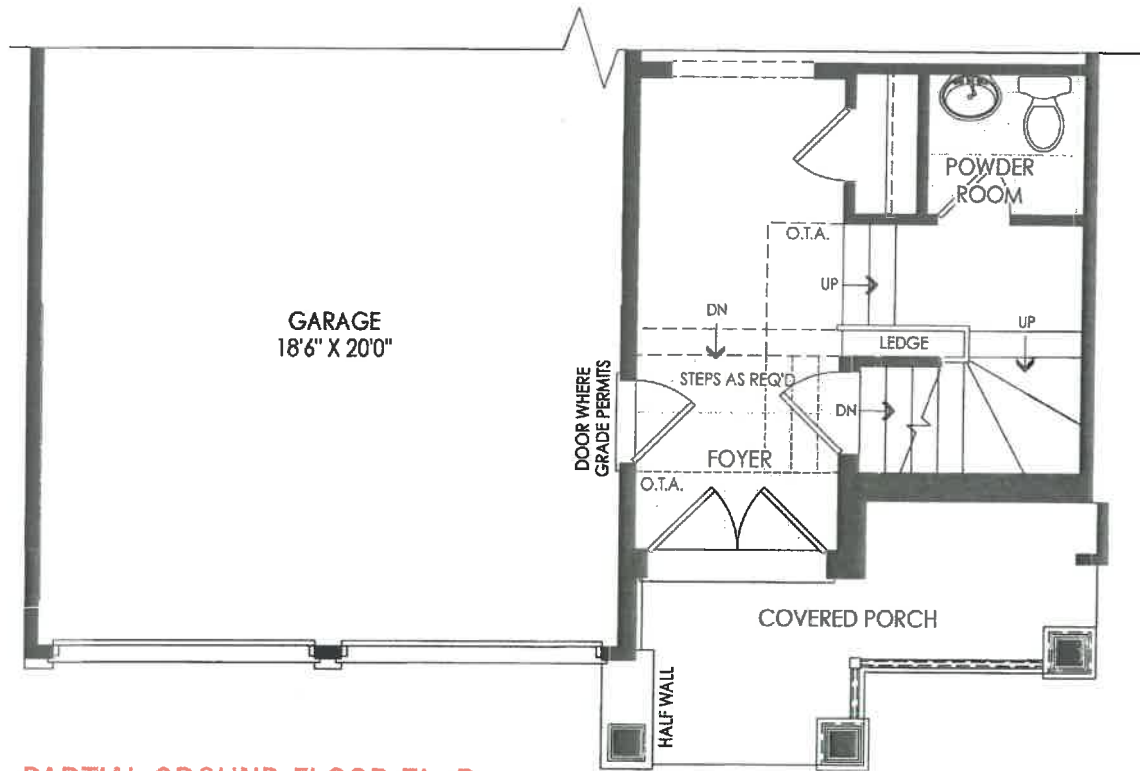


BASEMENT EL. A & B

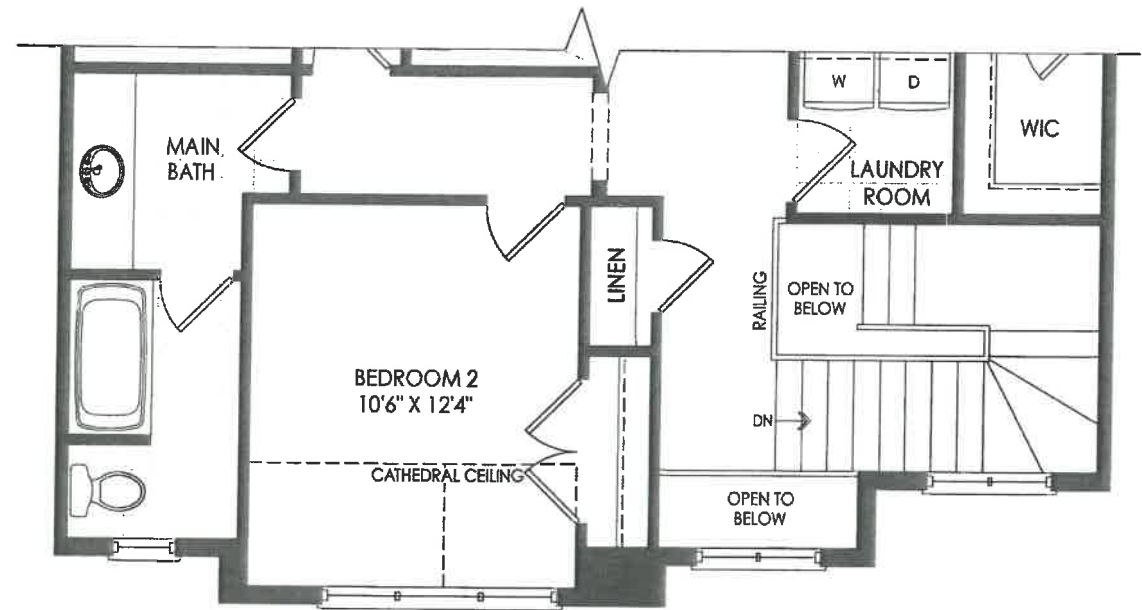
3 PCB  
ROUGH-IN

LOT 125-2

THE AQUA TH-03



PARTIAL GROUND FLOOR EL. B



PARTIAL SECOND FLOOR EL. B

LOT 185-2

B

THE AQUA TH-03

