

CONSTRUCTION SUMMARY OF EXTRAS  
Printed 2019-11-22 / 4:00 PM / Page 1 of 1

Site:  
Lot:  
Model:  
Purchaser:  
Phone/Email:

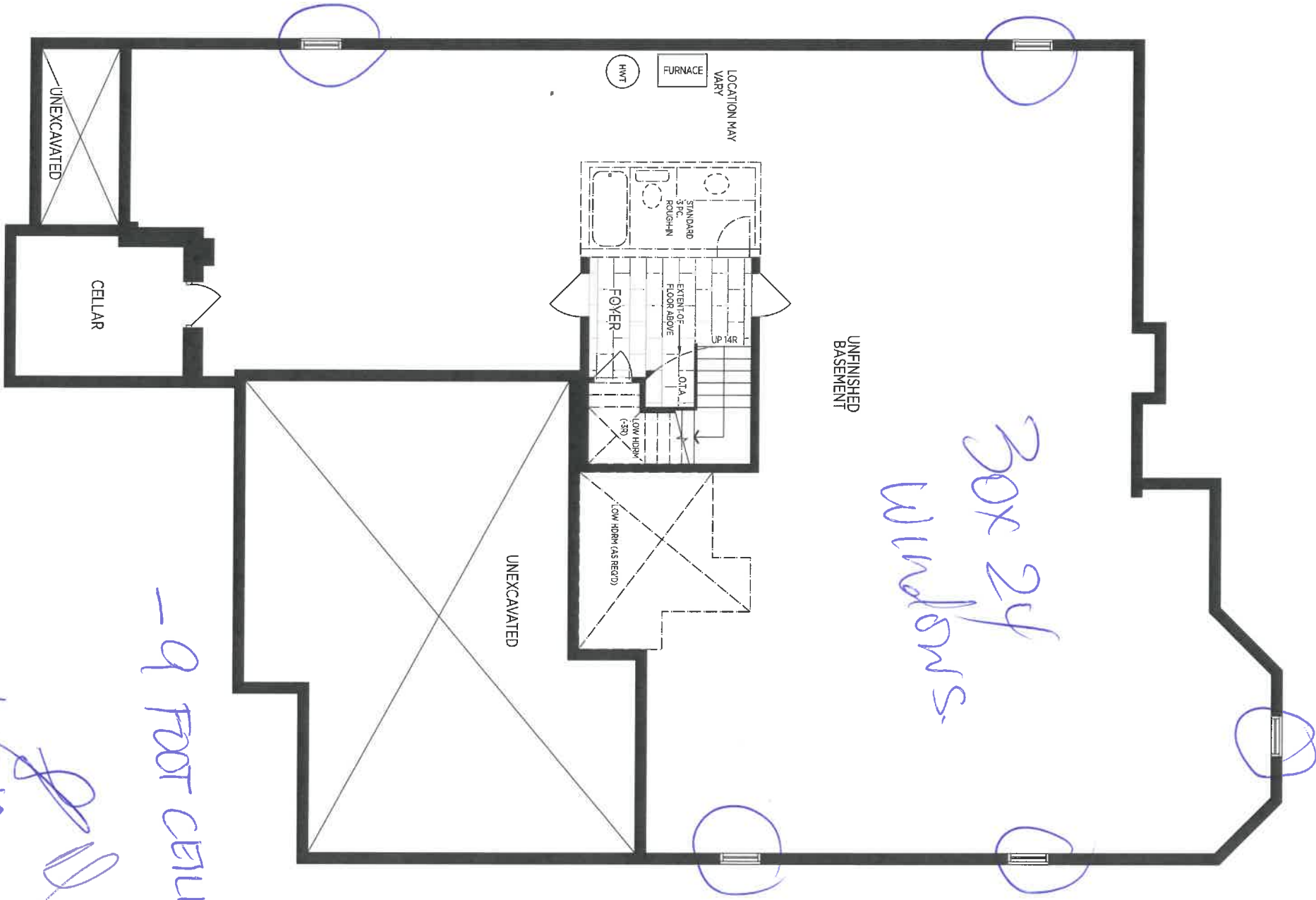
COOKSTOWN  
10  
SOMERSTON (B) OPTIONAL GROUND  
DAGMAR SKALA & ALEXANDER STEFOU  
416-574-2539 / LISTWITHDAGMAR@GMAIL.COM



DESCRIPTION		DATE SELECTED
BONUS PACKAGE: 3 PIECE STAINLESS STEEL APPLIANCES WITH WHITE TOP LOAD WASHER & DRYER	INCLUDED IN APS	
BONUS PACKAGE: STAINLESS STEEL HOOD FAN	INCLUDED IN APS	
#1 INCLUDED IN APS - OPTION GROUND FLOOR WITH 3RD BEDROOM	✓	OCTOBER 24 2019
#2 INCLUDED IN APS - SIDE DOOR FROM GARAGE TO SIDE YARD	✓	OCTOBER 24 2019
#3 INCLUDED IN APS - 10 FOOT CEILING ON THE MAIN FLOOR **INCLUDES 8 FOOT INTERIOR DOORS, FRONT DOOR, GARAGE MAN TO MUD, TRANSOMS ABOVE WINDOWS, WHERE POSSIBLE	✓	OCTOBER 24 2019
#4 INCLUDED IN APS - 9 FOOT CEILINGS IN BASEMENT	✓	OCTOBER 24 2019
#5 N/A		
#6 WINDOW - SEE LOCATION FOR WINDOW IN KITCHEN **WINDOW INCLUDED IN APS, APPROX 30 X 38 **SINK GOING UNDERNEATH	✓	OCTOBER 24 2019
#7 RELOCATE DISHWASHER AND SINK TO BE UNDER WINDOW	✓	OCTOBER 24 2019
#8 LARGER BASEMENT WINDOWS TO 30 X 24 (X5)	✓	OCTOBER 24 2019
#9 ELECTRICAL - KITCHEN - RELOCATE THE STANDARD LIGHT TO BE ABOVE ISLAND, ADD 2 CAPPED ROUGINS **END BOXES TO BE APPROX 60" APART, LEAVING APPROX 15" ON EITHER END OF ISLAND ***NOTE TO SITE - ISLAND WILL SHIFTED OVER SLIGHTLY, LOOK FOR KITCHEN DRAWING (TOTAL 3 LIGHTS)	✓	OCTOBER 24 2019
#10 ELECTRICAL - LED POTLIGHTS IN KITCHEN (4)	✓	OCTOBER 24 2019
#11 ELECTRICAL - LED POTLIGHTS IN WAFFLE IN GREAT ROOM (6)	✓	OCTOBER 24 2019
#12 ELECTRICAL - LED POTLIGHTS IN HALL IN FRONT OF CLOSET (1)	✓	OCTOBER 24 2019
#13 REINFORCE LIGHT BOX IN DINING, HALL & MASTER & FOYER	✓	OCTOBER 24 2019
#14 ELECTRICAL - LED POTLIGHTS IN HALL IN FRONT OF DINING ROOM (2), DELETE STANDARD	✓	OCTOBER 24 2019
#15 ELECTRICAL NOTE - HALL POT LIGHTS TO BE CENTRED WITH FLAT ARCHES ***SEE DOTTED LINES ON DRAWING	✓	OCTOBER 24 2019
#16 ELECTRICAL - PLUG ABOVE FIREPLACE FOR FUTURE TV	✓	OCTOBER 24 2019
#16 ELECTRICAL - PLUG IN GARAGE, SEE LOCATION ON SKETCH	✓	OCTOBER 24 2019
#17 ELECTRICAL - 2 PLUGS IN BASEMENT, LOCATION TO BE DETERMINED	✓	OCTOBER 24 2019
#18 ELECTRICAL - STAIR LIGHTS (STYLE AND LOCATION LIKE LOT 19 COOKSTOWN) IN CENTRE OF RISER	✓	OCTOBER 24 2019



# Optional Plans & Part

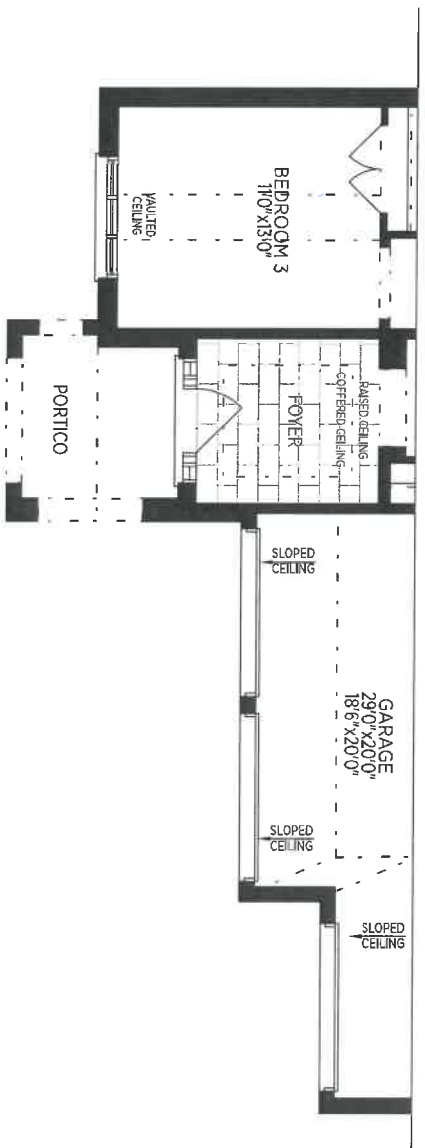


BASEMENT PLAN EL A

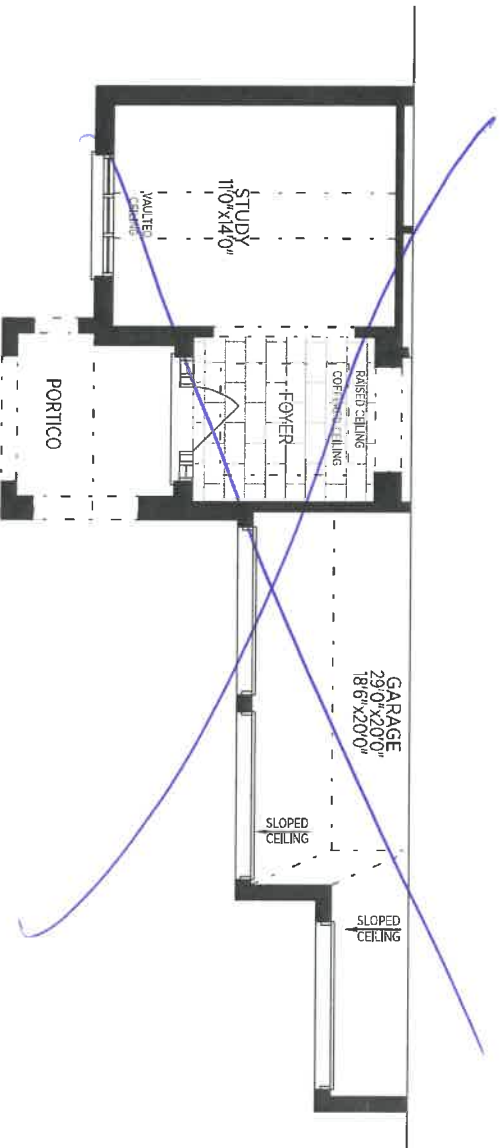
-9 FOOT CEILING

Oct 24/19  
10/10  
8/10

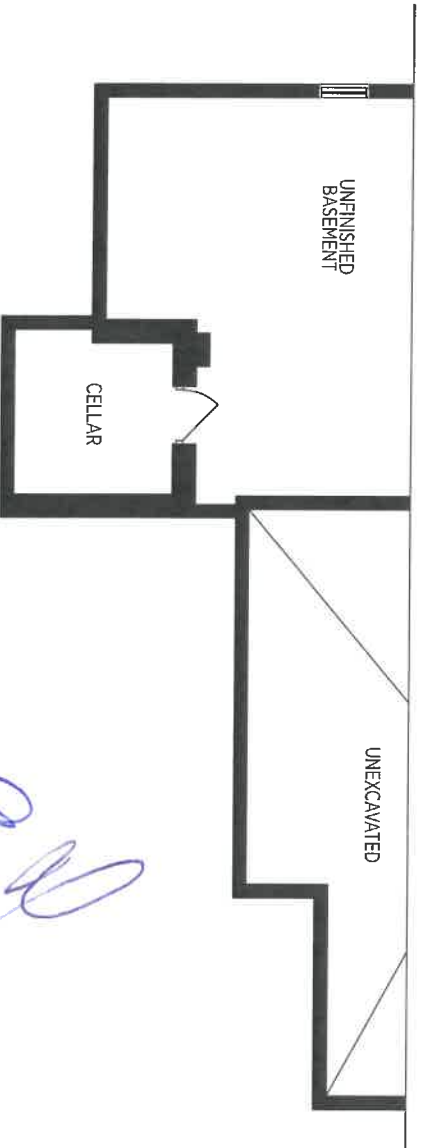
Is



PART. OPT. GROUND FLOOR EL B



PART. GROUND FLOOR EL B



PART. BASEMENT PLAN EL B

10/10  
Oct 24/19