

CONSTRUCTION SUMMARY OF EXTRAS
Printed 2019-12-11 / 2:58 PM / Page 1 of 1

Site: INNISFIL PHASE 3
Lot: 66W
Model: HARBOUR 36-02 (B)
Purchaser: TITO CANTALINI & MONICA GIAMMARIA
Phone/Email: 416-209-1379 / 647-818-5194



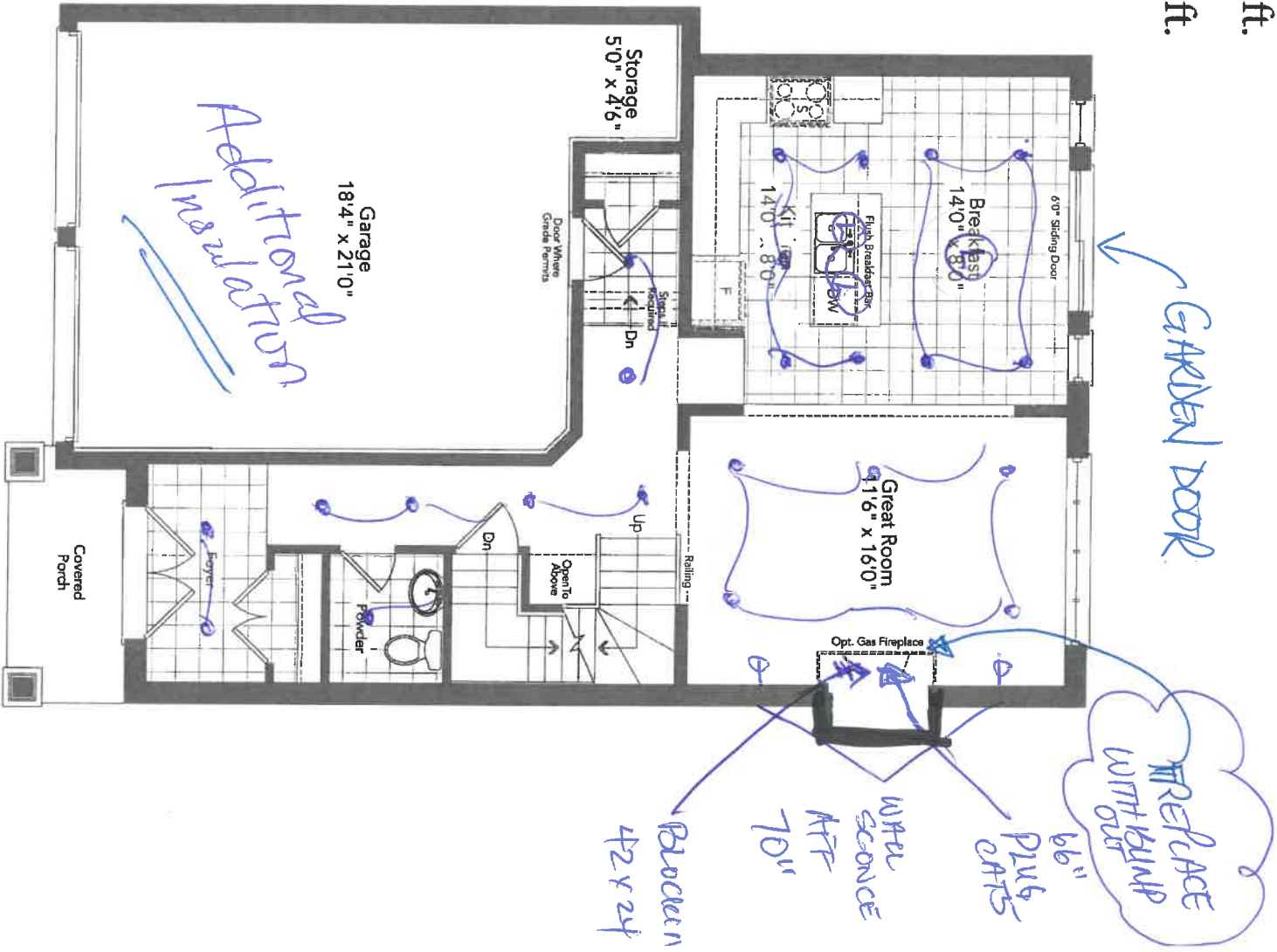
DESCRIPTION		DATE SELECTED
BONUS PACKAGE: 3 PIECE STAINLESS STEEL APPLANCES WITH WHITE TOP LOAD WASHER & DRYER	INCLUDED IN APS	
BONUS PACKAGE: STAINLESS STEEL HOOD FAN	INCLUDED IN APS	
#1 SMOOTH CEILINGS ON MAIN FLOOR ✓	DECEMBER 10 2019	
#2 SMOOTH CEILINGS ON SECOND FLOOR ✓	DECEMBER 10 2019	
#3 ELECTRICAL - KITCHEN - MOVE STANDARD LIGHT OVER ISLAND AND ADD (1) CAPPED LIGHT ON SAME SWITCH	DECEMBER 10 2019	
#4 ELECTRICAL - KITCHEN - LED POTLIGHTS IN KITCHEN ON SEP SWITCH (X5) ✓	DECEMBER 10 2019	
#5 ELECTRICAL - BREAKFAST - LED POTLIGHTS IN KITCHEN ON SEP SWITCH (X4), STANDARD TO REMAIN ✓	DECEMBER 10 2019	
#6 ELECTRICAL - GREAT ROOM - LED POTLIGHTS IN KITCHEN ON SEP SWITCH (X5), DELETE STD ✓	DECEMBER 10 2019	
#7 ELECTRICAL - GREAT ROOM - (2) WALL SCONCES ON EITHER SIDE OF FIREPLACE ON SEP SWITCH **APPROX 70" AFF & CENTRED BETWEEN WALL AND FIREPLACE (LEFT TO RIGHT) ✓	DECEMBER 10 2019	
#8 ELECTRICAL - ADD PLUG ABOVE FIREPLACE FOR FUTURE TV **APPROX 66" AFF **LOCATED BESIDE STANDARD CABLE ✓	DECEMBER 10 2019	
#9 ELECTRICAL - ADD PLUG IN MASTER BEDROOM AFF **66 AFF **LOCATED BESIDE STANDARD CABLE ✓	DECEMBER 10 2019	
#10 RELOCATE DOOR IN MASTER BEDROOM WALK IN CLOSET - SEE SKETCH ✓	DECEMBER 10 2019	
#11 ELECTRICAL - FOYER - LED POTLIGHTS (2) ON SEP SWITCH, DELETE STANDARD ✓	DECEMBER 10 2019	
#12 ELECTRICAL - MAIN HALL - LED POTLIGHTS (4) ON SEP SWITCH, DELETE STANDARD ✓	DECEMBER 10 2019	
#13 ELECTRICAL - IN FRONT OF GMD, LED POTLIGHTS (2) ON SEP SWITCH, DELETE STANDARD ✓	DECEMBER 10 2019	
#14 ELECTRICAL - UPPER HALL - LED POTLIGHTS (4) ON SEP SWITCH, DELETE STANDARD ✓	DECEMBER 10 2019	
#15 ELECTRICAL - UPPER HALL - LED POTLIGHTS (3) ON SEP SWITCH, DELETE STANDARD	DECEMBER 10 2019	
#16 ELECTRICAL - OVER STAIRS - LED POTLIGHTS (3) ON SEP SWITCH, DELETE STANDARD	DECEMBER 10 2019	
#17 ELECTRICAL - LAUNDRY - LED POTLIGHTS (2) ON SEP SWITCH, DELETE STANDARD	DECEMBER 10 2019	
#18 ELECTRICAL - SHOWER POTLIGHT IN MAIN BATH TUB & LED POTLIGHT IN TOILET AREA	DECEMBER 10 2019	
#19 ELECTRICAL - MAIN BATH - LED POTLIGHT (1) AT VANITY AREA, SAME SWITCH AS STANDARD	DECEMBER 10 2019	
#20 ELECTRICAL - MASTER ENSUITE - (3) LED POTLIGHTS ON SEP SWITCH	DECEMBER 10 2019	
#21 ELECTRICAL - MASTER ENSUITE - (1) CAPPED LIGHT ABOVE TUB ON SEP SWITCH	DECEMBER 10 2019	
#22 ELECTRICAL - MASTER WALK IN CLOSET (2) LED POTLIGHTS ON SEP SWITCH, DELETE STD ✓	DECEMBER 10 2019	
#23 ELECTRICAL - ADD (2) WALL SCONCES IN MASTER BEDROOM APPROX 66" AFF ***APPROX 55" IN FROM CENTRE ✓	DECEMBER 10 2019	
#24 ELECTRICAL - MASTER BEDROOM - SEE STANDARD PLUG LOCATION ON SKETCH ✓	DECEMBER 10 2019	
#25 36" GAS FIREPLACE (B36NTRE) IN GREAT ROOM, RAISED APPROX 4 INCHES ABOVE FINISHED FLOOR ***BUMP OUT FOUNDATION*** ✓	DECEMBER 10 2019	
#26 NOTE: FIREPLACE BUMP OUT TO BE CONFIRMED W/ SITING, IF BUMP OUT DOES NOT WORK, PURCHASER WILL RECEIVE A REFUND ✓	DECEMBER 10 2019	
#27 GARDEN DOORS (HINGED IN CENTRE) IN KITCHEN IN LIEU OF SLIDING DOOR ✓	DECEMBER 10 2019	
#28 LARGER BASEMENT REAR WINDOWS - INCREASE TO 30 X 24 (X3)	DECEMBER 10 2019	
#29 BLOCKING - ADDITIONAL SUPPORT FOR FUTURE HUNG TELEVISION IN MASTER BEDROOM & GREAT ROOM ***42 INCHES WIDE BY 24 INCHES HIGH *** ✓	DECEMBER 10 2019	
#30 ELECTRICAL - (4) EXTERIOR POTLIGHTS ✓	DECEMBER 10 2019	
#31 FRONT EXTERIOR DOOR - INQUIRE ABOUT PRICE WITH MULTIPoint LOCK AND SIDETTES ✓	DECEMBER 10 2019	
#32 ELECTRICAL - THIS IS TO CONFIRM THAT THERE ARE TWO STANDARD COACH LIGHTS ON EITHER SIDE OF THE FRONT DOOR ✓	DECEMBER 10 2019	
#33 ELECTRICAL - POWDER - (1) LED POTLIGHT ON SAME SWITCH AS STANDARD ✓	DECEMBER 10 2019	
#34 REQUEST - PRICING FOR QUIET BATHROOM FANS (PANASONIC) ✓	DECEMBER 10 2019	
#35 INSULATION IN GARAGE TO FRAMED EXTERIOR NON HABITABLE AREAS ✓	DECEMBER 10 2019	
#36 SHOWER NICHE IN MASTER ENSUITE 14 X 18 WIDE ✓	DECEMBER 10 2019	

STAINLESS

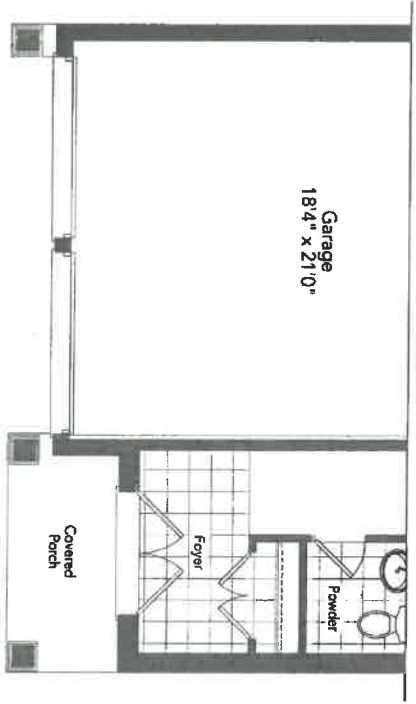
2019/12/29
Completed Structure
Please not started
1 OF 1

Elevation A 1852 sq.ft.

Elevation B 1829 sq.ft.



Ground Floor
Elevation A

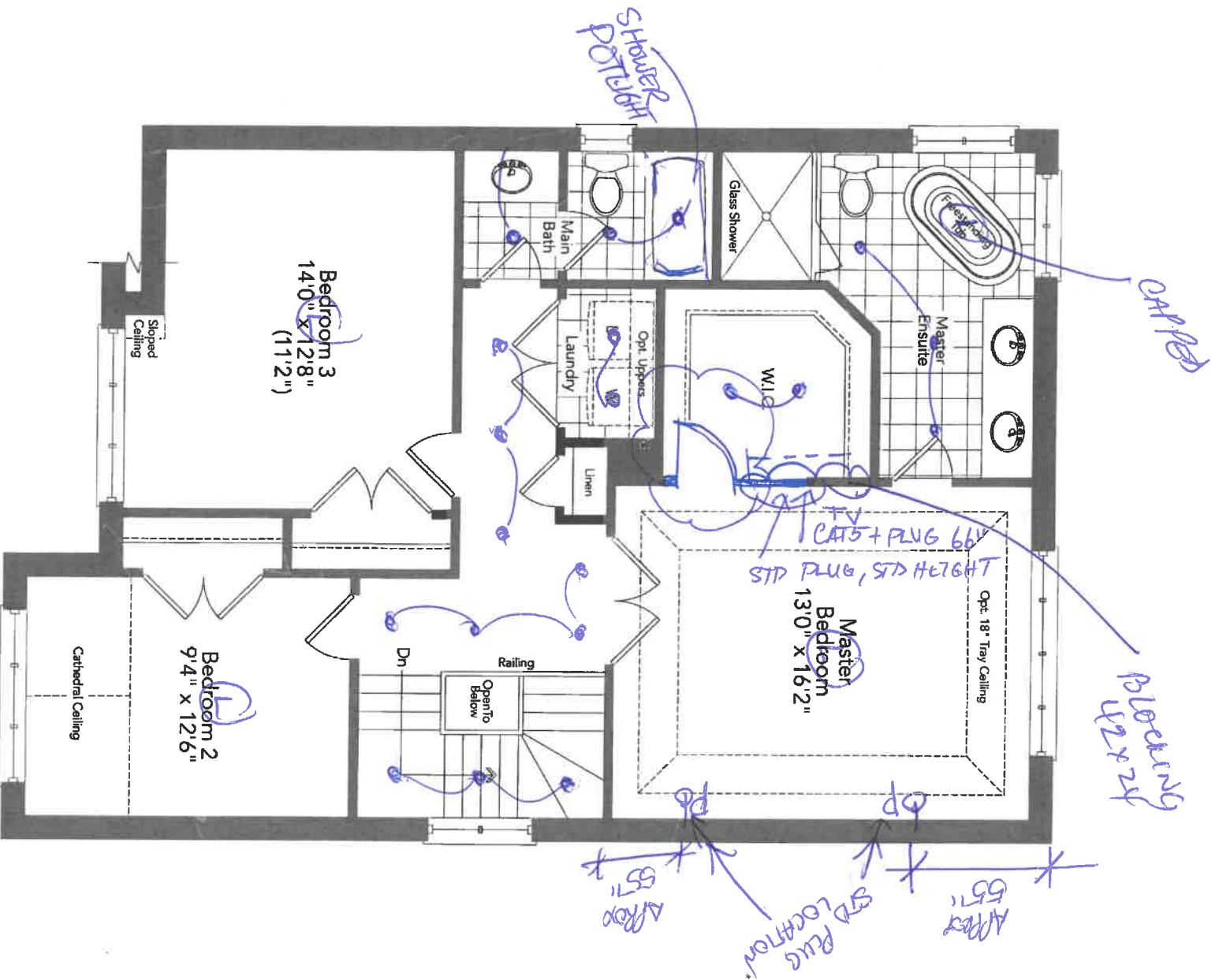


Partial Ground Floor
Elevation B

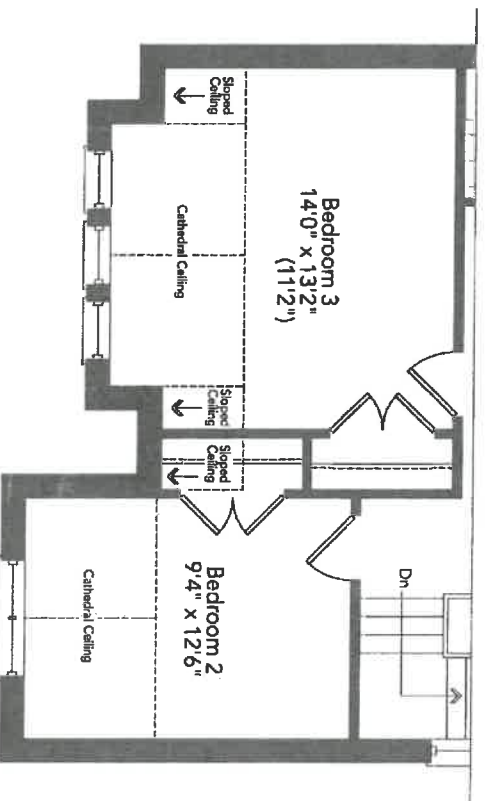
HARBOUR 36-02

6660

MG



Second Floor
Elevation A

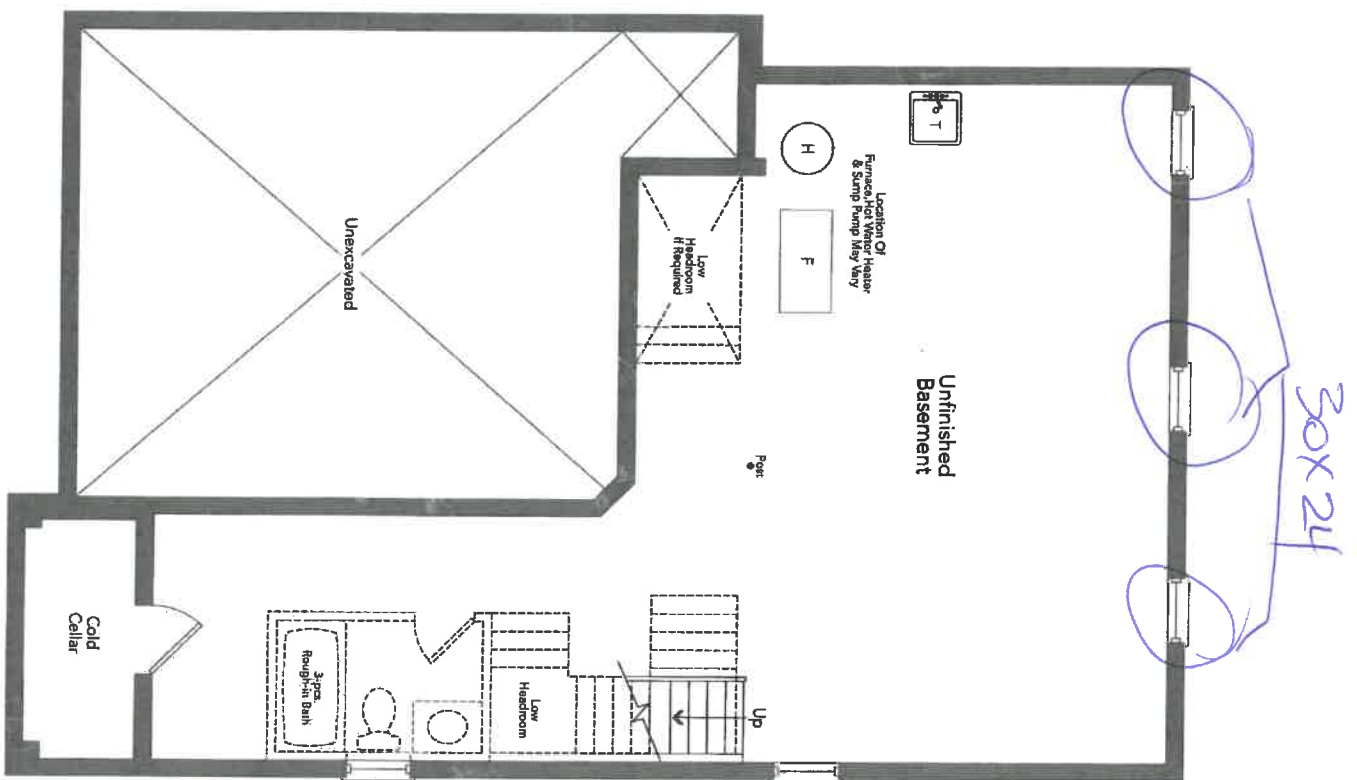


Partial Second Floor
Elevation B

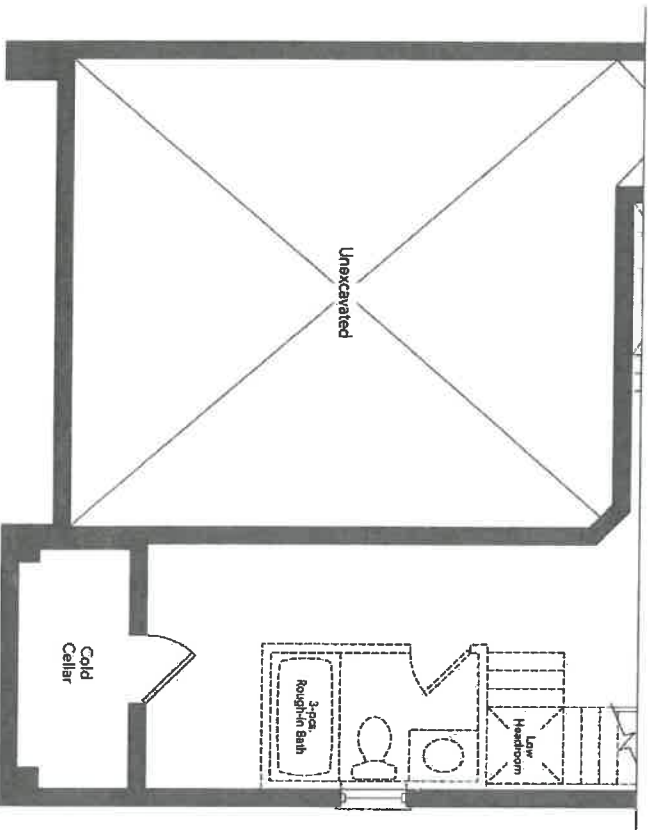
HARBOR 36-02

W1

WSS



Basement
Elevation A



Partial Basement
Elevation B

HARBOUR 36-02

6600

WY

[Handwritten signature]

4 exterior
pots

Lot 66 W-
N/S

