

JAN 11/22

CONSTRUCTION SUMMARY OF EXTRAS
Printed 2021-08-30 / 11:54 AM / Page 4 of 4

Site: WASAGA
Lot: 1
Model: CORAL (60-04)
Purchaser: IAN BOYLE
Purchaser: JOSEPHINE BORG
Phone: 647-746-5171
Email: joziborg@icloud.com



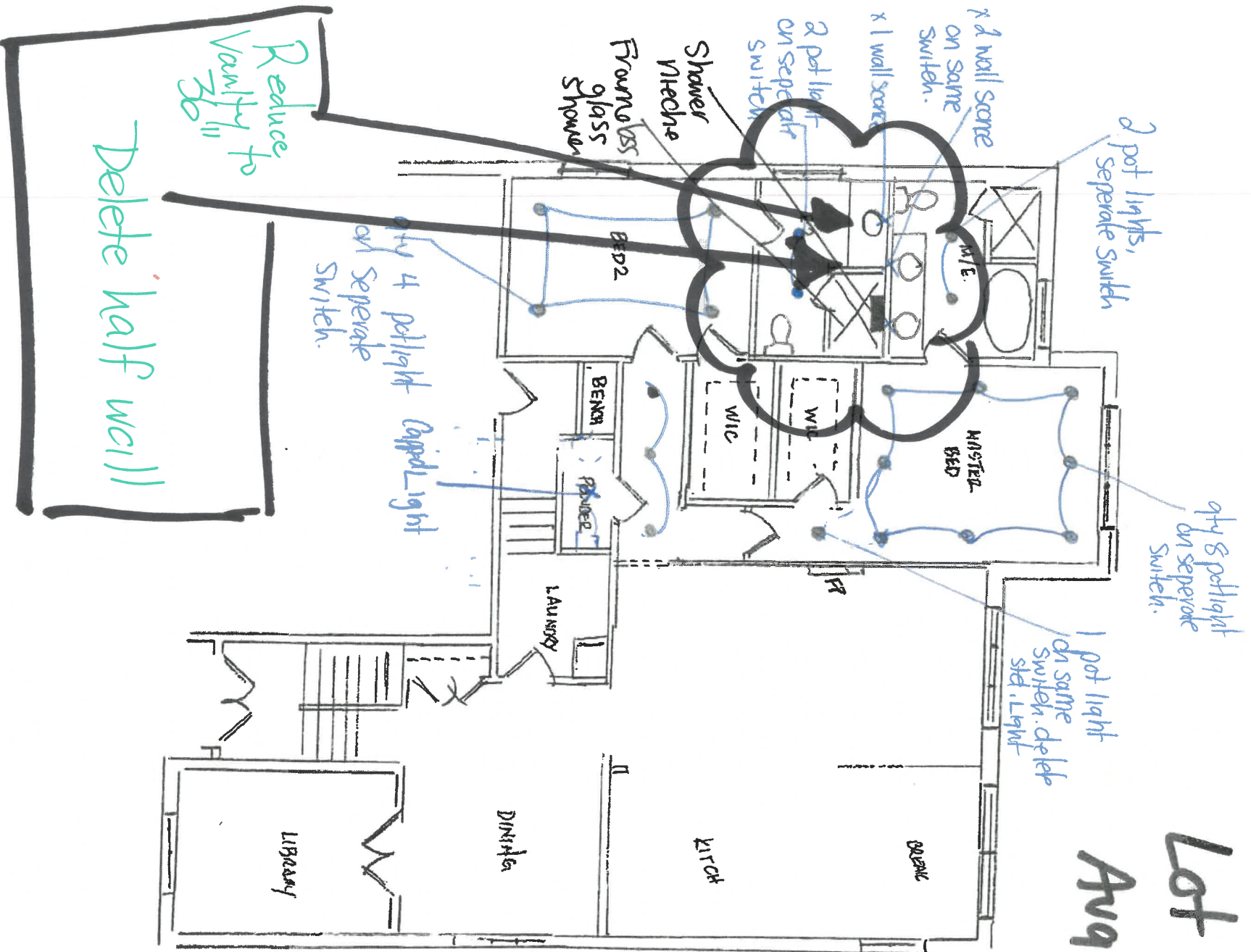
DESCRIPTION		DATE SELECTED
91	HVAC AIR CONDITIONER- COMPLETE LENNOX AIR CONDITIONER (13 ACX) INSTALLED	AUG 8/21
92	TRIM TRIM- UP 2- CONTEMPORARY BEVEL	
93	TRIM HARDWARE- INTERIOR DOORS- WEISER HALIFAX SQUARE ROSE IN MATTE BLACK. INCLUDES BLACK HINGES - QTY	
94	TRIM INTERIOR DOORS- MASONITE-QTY 12- MELROSE (HOLLOW, SMOOTH) IN LIEU OF STANDARD - SEE SKETCH	

JAN 11/22

↳ ENSURE Bed #2

- Delete halfwall beside shower
 - Glass to go to curb
 - Reduce Vanity to 36" inches wide
- ↳ install centred in space.

Lot 1
Aug 11/21



JB

SKETCH B
ELECTRICAL plus
Revisions To Original Plan

CONSTRUCTION SUMMARY OF EXTRAS
Printed 2021-08-30 / 11:54 AM / Page 1 of 4

Site: WASAGA
Lot: 1
Model: CORAL (60-04)
Purchaser: IAN BOYLE
Purchaser: JOSEPHINE BORG
Phone: 647-746-5171
Email: ioziborg@icloud.com



DESCRIPTION		DATE SELECTED
BONUS PACKAGE: 3 PIECE STAINLESS STEEL APPLIANCES WITH WHITE WASHER & DRYER	INCLUDED IN APS	
BONUS PACKAGE: STAINLESS STEEL HOOD FAN	INCLUDED IN APS	
STRUCTURALS *PART 1*		
#1 WINDOWS / FORMING	EGRESS WINDOW IN BASEMENT, APPROX 48 " X 48" IF POSSIBLE (WINDOW WELL MAY BE REQUIRED)- SEE SKETCH	18-Jun-21 ✓
#2 ALL TRADES	RAISE CEILING HEIGHT IN BASMENT TO 9 FEET	18-Jun-21 ✓
STRUCTURALS *PART 2*		
#1	NA	08-Aug-21
#2	NA	08-Aug-21
#3 ALL TRADES	MAIN FLOOR REDESIGN FOR BEDROOM 3, CLOSETS & FRAMELESS GLASS SHOWER IN LIEU OF TUB	08-Aug-21 ✓
#4 ALL TRADES	***NOTE - SHOWER IN MAIN BATH - REQUESTING THE FINISHED SIZE OF SHOWER TO BE 4' X 3', ***REQUESTING THAT THE FLOOR AT THE SHOWER DOOR LOCATION ONLY BE FLUSH (NO CURB), IF POSSIBLE, OFFICE/SITE TO CONFIRM***	08-Aug-21 ✓
#5	REDESIGN FEE (NEW DRAWINGS, PERMITS) ✓	08-Aug-21
#6	**THIS DOES NOT INCLUDE ANY KITCHEN CHANGES (NOTE FOR DECOR ONLY)	08-Aug-21
#7	NA	08-Aug-21
#8 WINDOWS	ADD OPERABLE WINDOW PANEL- QTY 1 IN FAMILY ROOM- SEE SKETCH A ✓	08-Aug-21
#9 KITCHEN / PLUMBING	PLUMBING- KITCHEN- POT FILLER- TRADITIONAL TWO HANDLE POT FILLER FAUCET WITH DUAL SHUT OFFS- MOEN- S664- MATTE BLACK---SEE SPEC ✓	08-Aug-21
#10	NA	08-Aug-21
#11 FRAMING / TILES	MAIN BATH - SHOWER NIECHE (SHAMPOO/SOAP SHELF) 18 INCHES WIDE X 14 INCHES HIGH BUILT INTO THE WALL, INCLUDE MARBLE SURROUND AND TILED BACK- SEE SKETCH B ✓	08-Aug-21
#12	NA	08-Aug-21
#13 DRYWALL	SMOOTH CEILINGS ON MAIN FLOOR ✓	08-Aug-21
#14 EXTERIOR DOOR	8 FOOT HIGH SLIDING DOOR AT REAR - SEE SKETCH A ✓	08-Aug-21
#15 FIREPLACE	50" ELECTRIC FIREPLACE- DIMPLEX PRISM BLF5051- WALL BUILT INTO ROOM APPROX 8" DEEP TO ACCOMMODATE, INCLUDES ACRYLIC ICE AD MULTI COLOURED LIGHTS, FAN FORCED HEATER AND ELECTRICAL. IN LIEU OF STANDARD ✓	08-Aug-21
#16 INSULATION	INSULATED GARAGE- EXTERIOR WALLS- SEE SKETCH ✓	08-Aug-21
COLOURS		
1 ELECTRICAL	ELECTRICAL-MAIN HALL -3 POT LIGHTS ON SAME SWITCH- DELETE STANDARD LIGHT- SEE SKETCH B ✓	Aug 8
2 ELECTRICAL	ELECTRICAL- RELOCATE STANDARD KITCHEN LIGHT TO OVER ISLAND, ADD 2 CAPPED LIGHTS ON SAME SWITCH- SPACE EVENLY- SEE ISLAND SKETCH FOR LOCATION A ✓	
3 ELECTRICAL	ELECTRICAL- KITCHEN- QTY 6 POT LIGHT, ON SEPARATE SWITCH, SEE SKETCH A ✓	
4 ELECTRICAL	ELECTRICAL- MASTER BATH- QTY 2 POTLIGHT ON SEPARATE SWITCH B ✓	
5 ELECTRICAL	ELECTRICAL- ENSUITE 2- QTY 2 POTLIGHTS ON SEPARATE SWITCH- SEE SKECH B ✓	
6 ELECTRICAL	ELECTRICAL- FAMILY ROOM- QTY 8 POTLIGHT ON SEPARATE SWITCH, STANDARD LIGHT TO REMAIN- SEE SKETCH A ✓	
7 ELECTRICAL	ELECTRICAL- EXTERIOR POT LIGHT FOR FRONT PORCH, ON SAME SWITCH AS COACH LIGHT- SEE SKETCH A ✓	
8 ELECTRICAL	ELECTRICAL- MASTER BEDROOM QTY 8 ON SEPARATE SWITCH, STD LIGHT TO REMAIN-SEE SKETCH B *** (NOTE- WALK IN CLOSETS IN MASTER BED TO HAVE STD CEILING LIGHT) ✓	
9 ELECTRICAL	ELECTRICAL- MASTER BEDROOM FOYER- QTY 1 POTLIGHT ON SAME SWITCH, DELETE STANDARD LIGHT- SEE SKETCH B ✓	
10 ELECTRICAL	ELECTRICAL- BEDROOM 2- QTY 4 POTLIGHTS ON SEPARATE SWITCH- STD LIGHT TO REMAIN- SEE SKETCH B ✓	
11 ELECTRICAL	ELECTRICAL- MASTER BATH- QTY 2 WALL SCONCE ROUG- IN, CENTER OVER EACH SINK, ON SAME SWITCH, DELETE STANDARD LIGHT FIXTURE- SEE SKETCH B ✓	
12 ELECTRICAL	ELECTRICAL- POWDER ROOM- QTY 1 WALL SCONCE, CENTER ABOVE SINK ON SEPARATE SWITCH- DELETE STANDARD LIGHT FIXTURE-SEE SKETCH B DELETE STD VANITY LIGHT- ADD (1) CAPPED LIGHT	

24/11/22

CONSTRUCTION SUMMARY OF EXTRAS

Printed 2021-08-30 / 11:54 AM / Page 2 of 4

Site: WASAGA

Lot: 1

Model: CORAL (60-04)

Purchaser: IAN BOYLE

Purchaser: JOSEPHINE BORG

Phone: 647-746-5171

Email: joziborg@icloud.com

SHORELINE POINT

WASAGA BEACH

ZANCOR

HOMES

DESCRIPTION		DATE SELECTED
13	ELECTRICAL- ENSUITE 2 BATH- QTY 1 WALL SCONCE, CENTER OVER SINK ON SAME SWITCH. DELETE STANDARD LIGHT - SEE SKETCH B ✓	Aug 8/21
14	ELECTRICAL- KITCHEN- SHIFT STD LIGHT IN BREAKFAST AREA BY APPROX 4 FEET FROM REAR, CENTERED IN ROOM SEE SKETCH A ✓	
15	ELECTRICAL- PLUG ABOVE FIREPLACE FOR FUTURE TV, BESIDE CABLE, INSTALL 65" AFF- SEE SKETCH A ✓	
16	ELECTRICAL FOR HIDDEN LIGHT VALANCE-QTY 8 PUCK LIGHTS- ON SEPARATE SWITCH. SEE KITCHEN FLOOR PLAN FOR LOCATION OF PUCK LIGHTS - SEE SKETCH C ✓	
17	ELECTRICAL - QTY 2 PUCK LIGHTS - QTY 1 IN EACH GLASS CABINET- TO BE CENTERED INSIDE CEILING OF CABINET. ON SAME SWITCH AS HIDDEN LIGHT VALANCE - SEE SKETCH C ✓	
18	NA	
19	ELECTRICAL- WALL OVEN- 30AMP ON SEPARATE CIRCUIT- SEE SPEC AND KITCHEN SKETCH ✓	
20	ELECTRICAL FOR WARMING DRAWER PLUG- SEE SPEC AND KITCHEN SKETCH ✓	
21	ELECTRICAL- WINE FRIDGE- 15AMP ON SEPARATE CIRCUIT- SEE SPEC ✓	
22	ELECTRICAL- MICROWAVE - 20AMP ON A SEPARATE CIRCUIT- SEE SKETCH, SEE SPEC ✓	
23	HVAC GAS LINE FOR COOKTOP INCLUDES 15 AMP PLUG ✓	
24	KITCHEN CABINETS- EXTEND CABINETS (UP 1) ON STOVE WALL AND COUNTERTOP (UP 3) BY 2 FT 6 INCHES-*** NOTE---END OF CABINETS AND END OF ISLAND TO LINE UP ✓	
25	KITCHEN CABINETS- EXTEND ISLAND CABINETS (UP 1)AND COUNTERTOP (UP 3) BY 2 FT 6 INCHES- ****NOTE--- END OF ISLAND AND END OF STOVE WALL TO LINE UP ✓	
26	KITCHEN BASE PIE CUT CORNER CABINET- SEE SKETCH- U P 1 ✓	
27	KITCHEN SPICE RACK X 2 (LOCATED ON EITHER SIDE OF COOKTOP) SEE SKETCH- COMFORT 2 PULL OUT FRAME- 23 5/8 WIDE- SEE SKETCH AND SPECS ✓	
28	KITCHEN WINE FRIDGE OPENING- DUMMY DOOR AT SIDE-SEE SKETCH AND SPECS ✓	
29	KITCHEN HIDDEN LIGHT VALANCE- UP 1 * PUCK LIGHTS SOLD SEPERATELY* ✓	
30	KITCHEN BUILT IN WALL OVEN WITH WARMING DRAWER BELOW (IN LIEU OF CABINETS) ✓	
31	KITCHEN QTY 4 PLAIN CLEAR GLASS DOORS WITH MATCHING INTERIOR AND QTY 6 GLASS SHELVES, QTY 3 IN EACH CABINET- SEE KITCHEN SKETCH ✓	
32	KITCHEN HOOD RANGE-INCLUDING 600CFM FAN, MDF FINISH. LINE UP WITH COOKTOP AND SPICE DRAWERS- SEE SKETCH ✓	
33	KITCHEN 2 BIN- GARBAGE AND RECYCLING- FULL HEIGHT DOOR-- SEE SKETCH ✓	
34	KITCHEN FRIDGE ENCLOSURE FOR 48" BUILT IN FRIDGE- SEE SPEC AND SKETCH ✓	
35	KITCHEN COOKTOP CABINET WITH POT DRAWERS, INCLUDES CUT OUT FOR COOKTOP/RANGE TOP SEE- SPEC/ SKETCH ✓	
36	KITCHEN BASE MICROWAVE WITH DRAWER BELOW- UP 1- SEE SKETCH/ SPECS ✓	
37	KITCHEN STANDARD BANK OF DRAWERS TO REMAIN- SEE SKETCH FOR LOCATION ✓	
38	KITCHEN FLOATING SHELVES IN KITCHEN- SEE SKETCH- QTY 3- NOTE COLOUR: ADAMELLO 2 - SEE SKECTH ✓	
39	KITCHEN TWO TONE KITCHEN CABINETS- ISLAND DIFFERENT COLOUR THAN PERIMETER ✓	
40	KITCHEN 48 INCH EXTENDED UPPERS FOR STANDARD LAYOUT, INCLUDES 2 FT 6 INCH EXTRA FEET FOR CABINET EXTENSION ✓	
41	KITCHEN RISER PANEL TO BE INSTALLED IN REMAINING SPACE BETWEEN TOP OF EXTENDED CABINETS AND CEILING. ENSURE RISER IS INSTALLED FLUSH WITH CABINET BOX ✓	
42	KITCHEN SOFT CLOSE ON ADDITIONAL DRAWERS AND DOORS ✓	
43	KITCHEN CABINETS- KITCHEN- UP 1 ✓	
44	KITCHEN CABINET - LAUNDRY- UP 1 ✓	
45	KITCHEN KITCHEN HARDWARE- BERENSON- HALIBURTON- MATTE BLACK- 160MM- QTY 30 ✓	
46	NA	
47	PLUMBING WATERLINE FOR FRIDGE ✓	
48	PLUMBING- KITCHEN FAUCET- MOEN PATTERSON SINGLE HANDLE PULLDOWN- S72003- BLACK MATTE- SEE SPEC ✓	
49	PLUMBING- LAUNDRY SINK FAUCET- SINGLE HANDLE PULL DOWN- MOEN 7585- CHROME- SEE SPEC ✓	
50	PLUMBING- SOAP DISPENSER - MOEN PATTERSON- S3955 IN MATTE BLACK- QTY 2- INSTALL TO LEFT AND RIGHT OF KITCHEN FAUCET - SEE SPEC ✓	

JAN 11/22

CONSTRUCTION SUMMARY OF EXTRAS
Printed 2021-08-30 / 11:54 AM / Page 3 of 4

Site: WASAGA

Lot: 1

Model: CORAL (60-04)

Purchaser: IAN BOYLE

Purchaser:: JOSEPHINE BORG

Phone: 647-746-5171

Email: ioziborg@icloud.com

SHARELINE POINT

WASAGA BEACH

ZANCOR HOMES

DESCRIPTION		DATE SELECTED
51	NA	AUG 8/21
52	PLUMBING- MASTER BATH- ARRIIS- BLACK MATTE- POSI-TEMP SHOWER W/ 3 FUNCTION TRANSFER VALVE/TRIM & SLIDE BAR W/ HAND SHOWER- TS22002EP/U361C1/UTS23005/62320/3887EP/A725- SEE SPECS ✓	
53	PLUMBING- MASTER BATH-ALIGN SINGLE HANDLE SINK FAUCET IN BLACK MATTE - 6190- QTY 2- SEE SPEC. ✓	
54	PLUMBING- MASTER BATH- ALIGN TWO HANDLE ROMAN TUB FAUCET- T393-4796- MATTE BLACK- SEE SPEC ✓	
55	PLUMBING- MASTER BATH- ALIGN-ACCESSORIES- PIVOTING PAPER HOLDER QTY 1- MATTE BLACK YB0408, QTY 1 - 24" TOWEL BAR YB0424 AND QTY 1- TOWEL RING YB0486 TO BE INSTALLED NEAR SINK FOR HAND TOWEL ✓	
56	PLUMBING- ENSUITE 2 BATH- ALIGN- DESIGNER GRAB BAR- CHROME- 18 INCH- YG0418, INSTALL BESIDE TOILET ✓	
57	PLUMBING / COUNTERTOP - PLUMBING- MASTER ENSUITE SINKS- QTY 2- 4220CIV- RECTANGLE- SEE SPEC ✓	
58	PLUMBING- ENSUITE 2 SINK- QTY 1 RECTANGLE- 4220CIV- SEE SPEC ✓	
59	PLUMBING / COUNTERTOP - PLUMBING- KITCHEN SINK- BLANCO PRECIS U SUPER SINGLE SILIGRANT- 402660- CORAL BLACK- SEE SPEC ✓	
60	PLUMBING / COUNTERTOP - PLUMBING- LAUNDRY SINK- BLANCO- 402242-FORMERA U1- SEE SPEC ✓	
61	COUNTERTOP - KITCHEN COUNTERTOP- STANDARD LAYOUT- UP 3 ✓	
62	COUNTERTOP - KITCHEN BACKSPLASH- SLAB- UP 3 ✓	
63	COUNTERTOP - MASTER ENSUITE COUNTER- UP 3 ✓	
64	COUNTERTOP - ENSUITE 2 COUNTER- UP 1 ✓	
65	COUNTERTOP - LAUNDRY COUNTER- TO GO ACROSS WASHER/DRYER, WATERFALL SIDE THAT ENDS AT SINK COUNTER. COUNTER GOES ACROSS SINK, INCLUDES SUPPORT GABLES --QUARTZ- UP 2 ✓	
66	CABINETS - CABINET-LAUNDRY - *** DUE TO WASHER/DRYER BEING HIGH, ENSURE THAT A BACKSPLASH BETWEEN UPPER CABINETS & COUNTER REAMIN 20 INCHES- SEE SKETCH** ✓	
67	HARDWOOD - HARDWOOD- FAMILY ROOM, DINING ROOM, MAIN HALL, LIBRARY- UP 3 ✓	
68	PAINT - STAIN FOR STAIRS TO MATCH HARDWOOD AS CLOSE AS POSSIBLE- 1 FLIGHT ✓	
69	HARDWOOD - HARDWOOD IN KITCHEN AND BREAKFAST AREA- UP 3 ✓	
70	HARDWOOD - HARDWOOD IN MASTER BEDROOM AND BEDROOM 2- UP 3 ✓	
71	TILE - TILE- POWDER ROOM- UP 4- STACKED ✓	
72	TILE - TILE- MAIN FOYER- UP 4- STACKED ✓	
73	TILE - TILE- MASTER ENSUITE FLOOR TILE- 12 X 24- STACKED- UP 5 ✓	
74	TILE - TILE-MASTER ENSUITE SHOWER WALL TILE- 12 X 24- UP5 STACKED VERTICLE ✓	
75	TILE - TILE-MASTER ENSUITE SHOWER FLOOR TILE- UP 2 ✓	
76	TILE - MASTER ENSUITE AND ENSUITE 2- SHOWER JAMB- QUARTZ ✓	
77	TILE - ENSUITE 2- FLOOR TILE- UP 2- STACKED ✓	
78	TILE - TILE- ENSUITE 2- SHOWER WALL- UP 2- STACKED VERTICLE ✓	
79	TILE - TILE- ENSUITE 2 SHOWER FLOOR TILE- UP 2 ✓	
80	CABINETS - CABINET- LAUNDRY- UPPER CABINETS-- UP 1 ✓	
81	CABINETS - CABINET- MASTER ENSUITE CABINET- UP 2 ✓	
82	CABINETS - CABINET- ENSUITE 2 BATH- UP1 ✓	
83	CABINETS - LAUNDRY CABINET HARDWARE- ✓	
84	CABINETS - HARDWARE FOR MASTER ENSUITE CABINETS- 96MM MATTE BLACK- HALIBURTON- QTY 7 ✓	
85	CABINETS - MASTER ENSUITE- BANK OF DRAWERS- CENTER BETWEEN SINKS (1 LARGE, 2 SMALL) SEE SKETCH ✓	
86	CABINETS - COMFORT HEIGHT - QTY 2- MASTER AND ENSUITE 2 ✓	
87	NA	
88	PLASTER MouldING - PLASTER MouldING- 102L- FAMILY ROOM, MASTER BED, HALLWAY, BEDROOM 2, DINING ROOM, FRONT FOYER AREA, BREAKFAST AREA ENDING AT KITCHEN CABINETS ✓	
89	RAILINGS - GLASS STAIRCASE RAILING, WITH SQUARE OAK POST, SQUARE OAK HANDARIL AND 3/8" INCH GLASS ✓	
90	NA	