

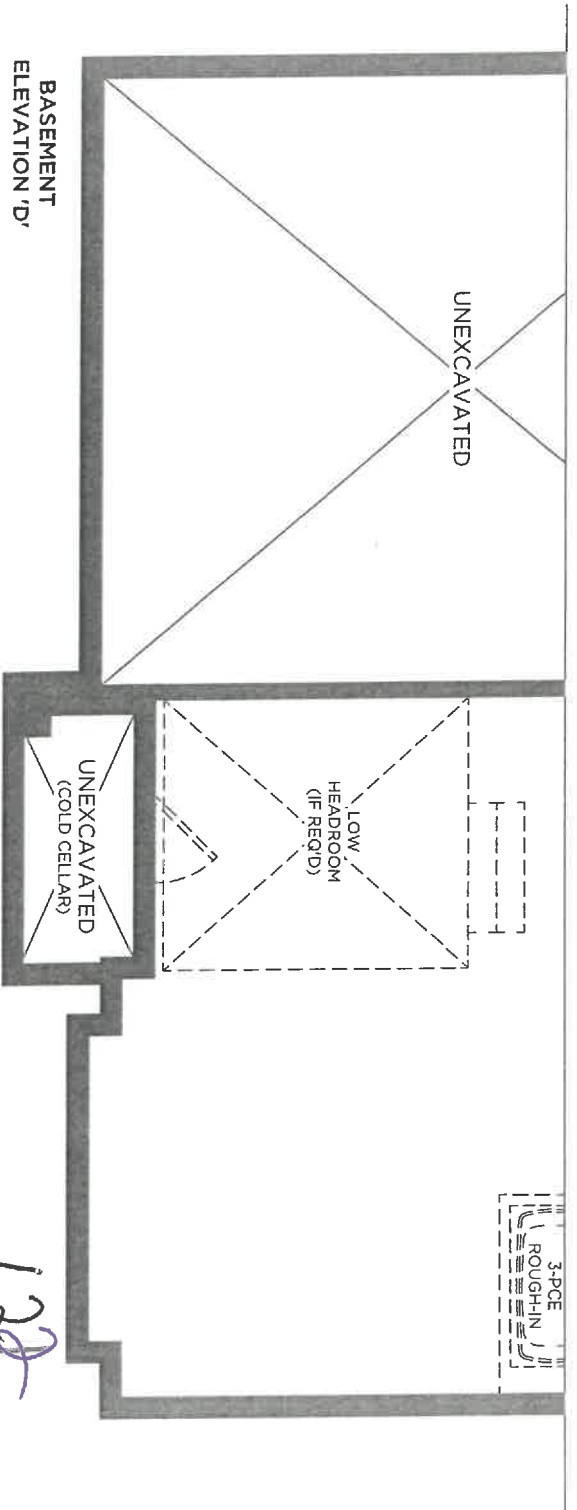
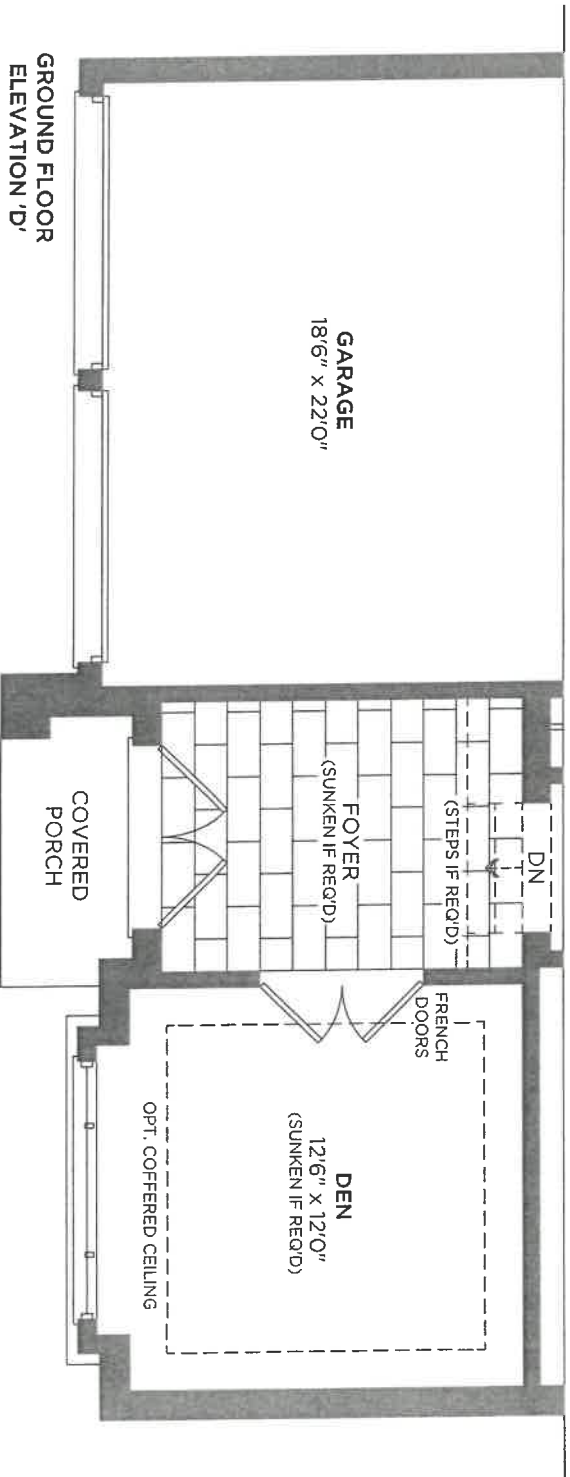
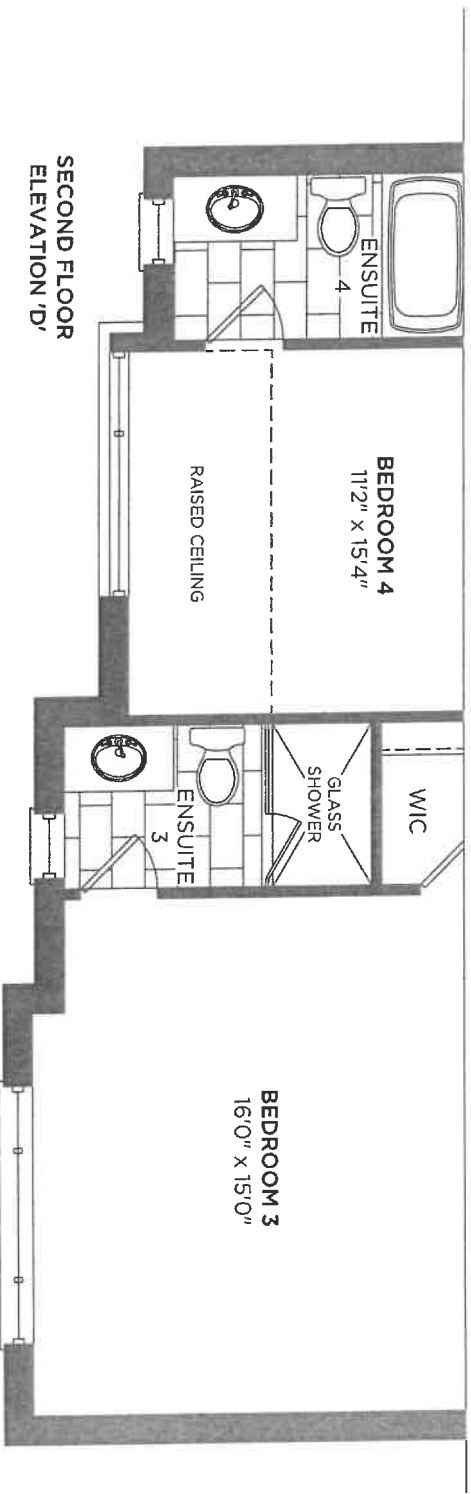
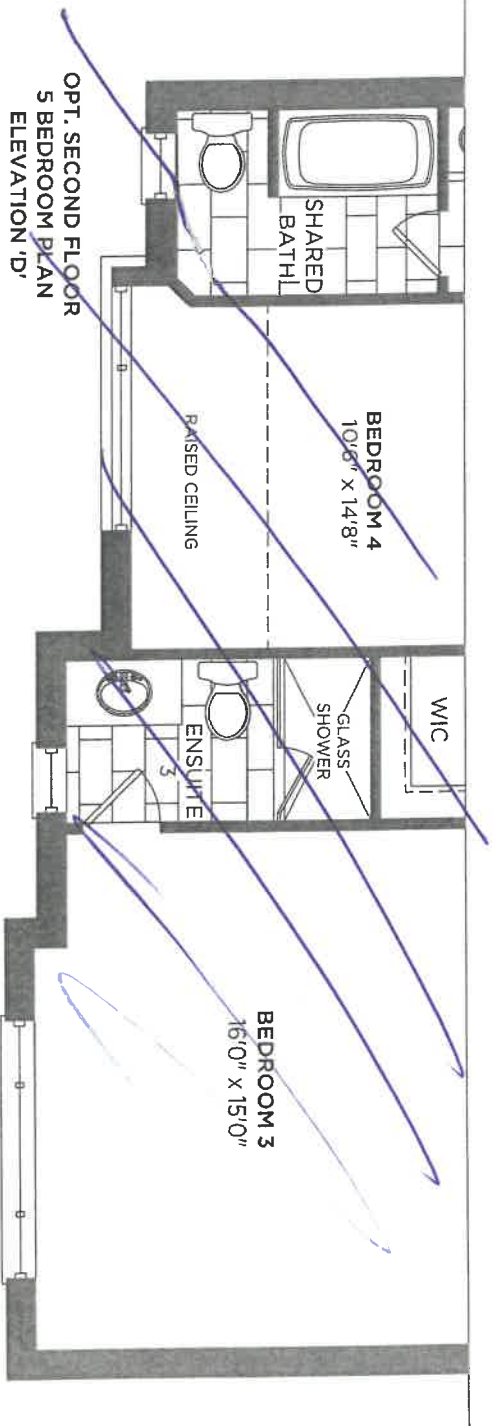
CONSTRUCTION SUMMARY OF EXTRAS  
Printed 2022-09-19 / 4:17 PM / Page 1 of 1

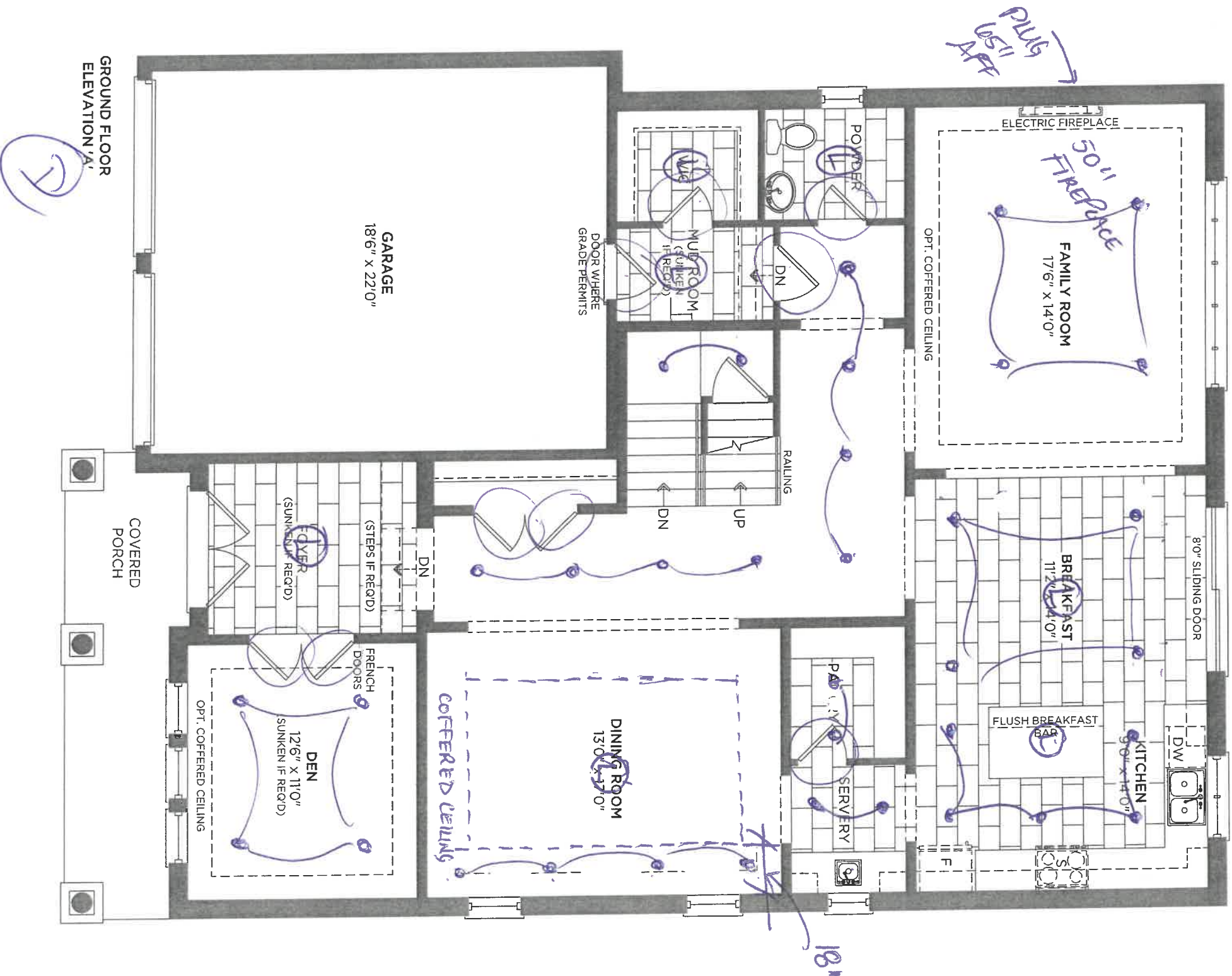
Site:  
Lot:  
Model:  
Purchaser:  
Purchaser:  
Phone:  
Email:

RIVER'S EDGE WASAGA  
122  
50-08 ELEV. D  
INVENTORY  
0  
SIMONE 905-738-7010  
SIMONE@ZANCORHOMES.COM



DESCRIPTION		DATE SELECTED
BONUS PACKAGE: STAINLESS STEEL HOOD FAN	INCLUDED IN APS	
	STRUCTURALS	
1 SMOOTH CEILINGS THROUGHOUT		19-Aug-22
2 ELECTRICAL - (8) POTLIGHTS IN MAIN HALL ON EXISTING SWITCH, DELETE STD LIGHT *****SEE FLOOR PLAN - POTS TO BE SPLIT 4 AND 4		19-Aug-22
3 ELECTRICAL - (5) POTLIGHTS IN KITCHEN ON SEP SWITCH, STD LIGHT TO REMAIN CENTRED OVER ISLAND		19-Aug-22
4 ELECTRICAL - (2) POTLIGHTS IN SERVERY EXISTING SWITCH, DELETE STD LIGHT		19-Aug-22
5 ELECTRICAL - ADD LED TAPE LIGHTING ON SEP SWITCH IN KITCHEN AND SERVERY ***INSTALL TIGHT TO VALANCE		19-Aug-22
6 ***VALANCE NOT INCLUDED AND TO BE PURCHASED AT TIME OF COLOUR SELECTIONS***		19-Aug-22
7 ELECTRICAL - POWDER ROOM - DELEE LIGHT ABOVE SINK AND INSTALL STANDARD CEILING LIGHT		19-Aug-22
8 ELECTRICAL - (4) POTLIGHTS IN FAMILY ROOM ON EXISTING SWITCH, DELETE STD LIGHT		19-Aug-22
9 ELECTRICAL - INSTALL PLUG APPROX 65 INCHES ABOVE FIREPLACE IN FAMILY ROOM ***CABLE ROUGHIN TO BE LOCATED BESIDE IT		19-Aug-22
10 ELECTRICAL - (3) POTLIGHTS IN MASTER ENSUITE ON SEP SWITCH, STD LIGHTS ABOVE EACH SINK TO REMAIN		19-Aug-22
11 ELECTRICAL - ADD CARPED ROUGHIN ABOVE TUB ON SEP SWITCH IN MASTER ENSUITE		19-Aug-22
12 ELECTRICAL - (3) POTLIGHTS IN MASTER WALK IN CLOSET ON EXISTING SWITCH, DELETE STD LIGHT		19-Aug-22
13 ELECTRICAL - (4) POTLIGHTS IN MASTER WALK IN CLOSET ON EXISTING SWITCH, DELETE STD LIGHT		19-Aug-22
14 ELECTRICAL - (2) POTLIGHTS IN MASTER ENTRANCE ON EXISTING SWITCH, DELETE STD LIGHT		19-Aug-22
15 ELECTRICAL - (2) POTLIGHTS IN MASTER BEDROOM ON SEP SWITCH SWITCH		19-Aug-22
16 ELECTRICAL - (2) WALL SCONCES ROUGHINS, APPROX 60 INCHES ABOVE FLOOR IN MASTER BEDROOM , ON 3-WAY SWITCH ***SEE FLOOR PLAN FOR LOCATIONS		19-Aug-22
17 ELECTRICAL - (8) POTLIGHTS IN UPPER HALL ON EXISTING SWITCH, DELETE STD LIGHT		19-Aug-22
18 ELECTRICAL - INSTALL PLUG APPROX 65 INCHES ABOVE FLOOR IN MASTER BEDROOM ***CABLE ROUGHIN TO BE LOCATED BESIDE IT		19-Aug-22
19 ELECTRICAL - (4) POTLIGHTS IN DEN ON EXISTING SWITCH, DELETE STD LIGHT		19-Aug-22
20 ELECTRICAL - (4) POTLIGHTS IN DINING ROOM ON SEP SWITCH, STD LIGHT TO REMAIN **LIGHTS TO BE INSTALLED IN COFFER		19-Aug-22
21 INTERIOR DOORS - 8 FEET HIGH (X8)		19-Aug-22
22 GARAGE MAN DOOR - 8 FEET HIGH, IF POSSIBLE		19-Aug-22
23 INSULATE ONE WALL IN MASTER BEDROOM - SEE FLOOR PLAN		19-Aug-22
24 COFFERED CEILING IN DINING ROOM **REQUESTING THAT COFFER WIDTH IS APPROX 18 INCHES WIDE, SEE DRAWING		19-Aug-22
25 ELECTRICAL - (2) POTLIGHTS AT STAIR LANDING IN FRONT OF POWDER ROOM		19-Aug-22
26 ELECTRICAL - (4) POTLIGHTS IN BREAKFASTON SEP SWITCH, STD LIGHT REMAINS		19-Aug-22
27 ELECTRICAL - (2) POTLIGHTS IN PANTRY ON EXISTING SWITCH, DELETE STD LIGHT		19-Aug-22
28 AIR CONDITIONER		19-Aug-22
29 FIREPLACE - 50 INCH (BLF5051) IN LIEU OF STANDARD **INCLUDES WOOD LOG ACCESSORY KIT		19-Aug-22

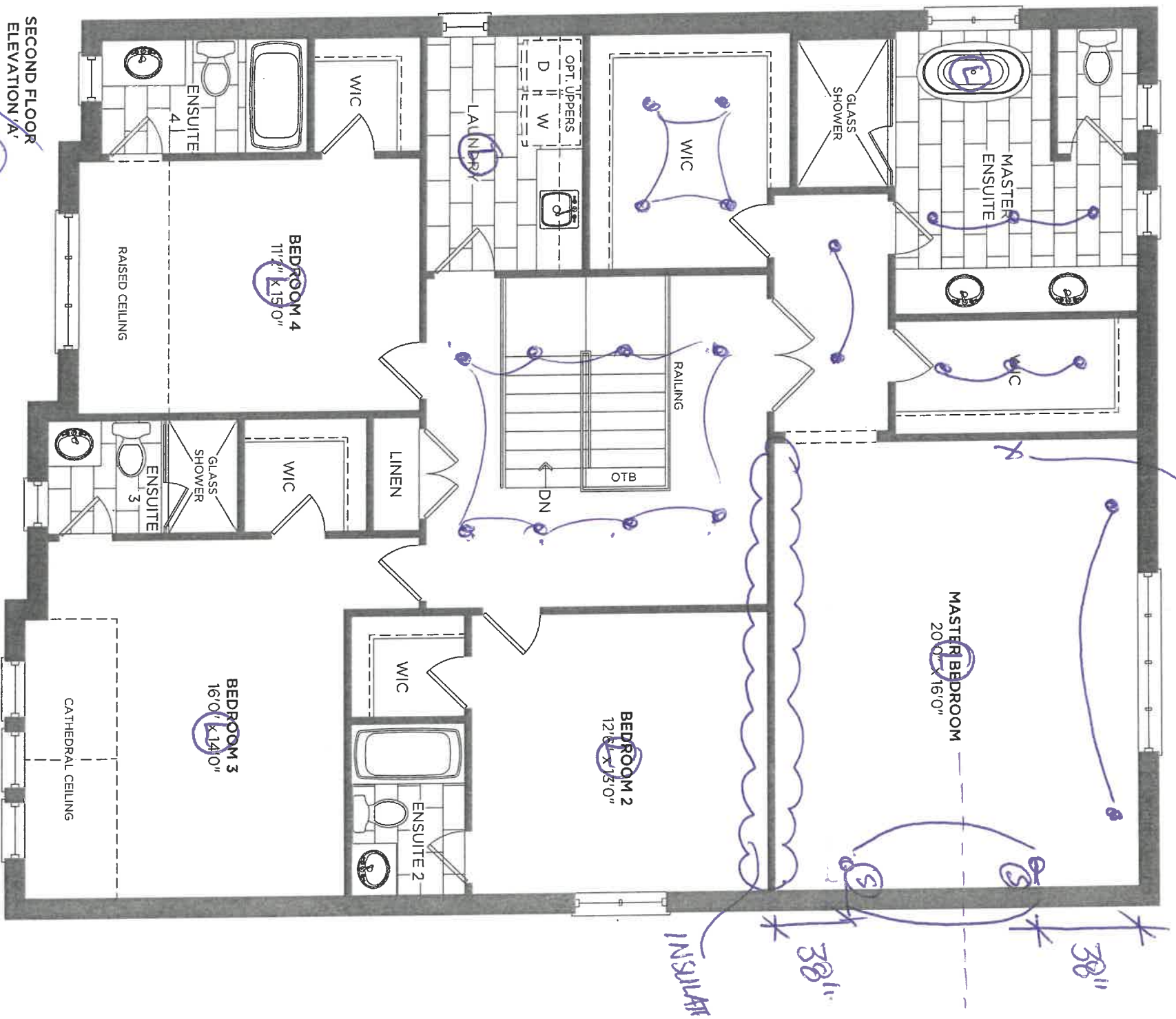




50-8

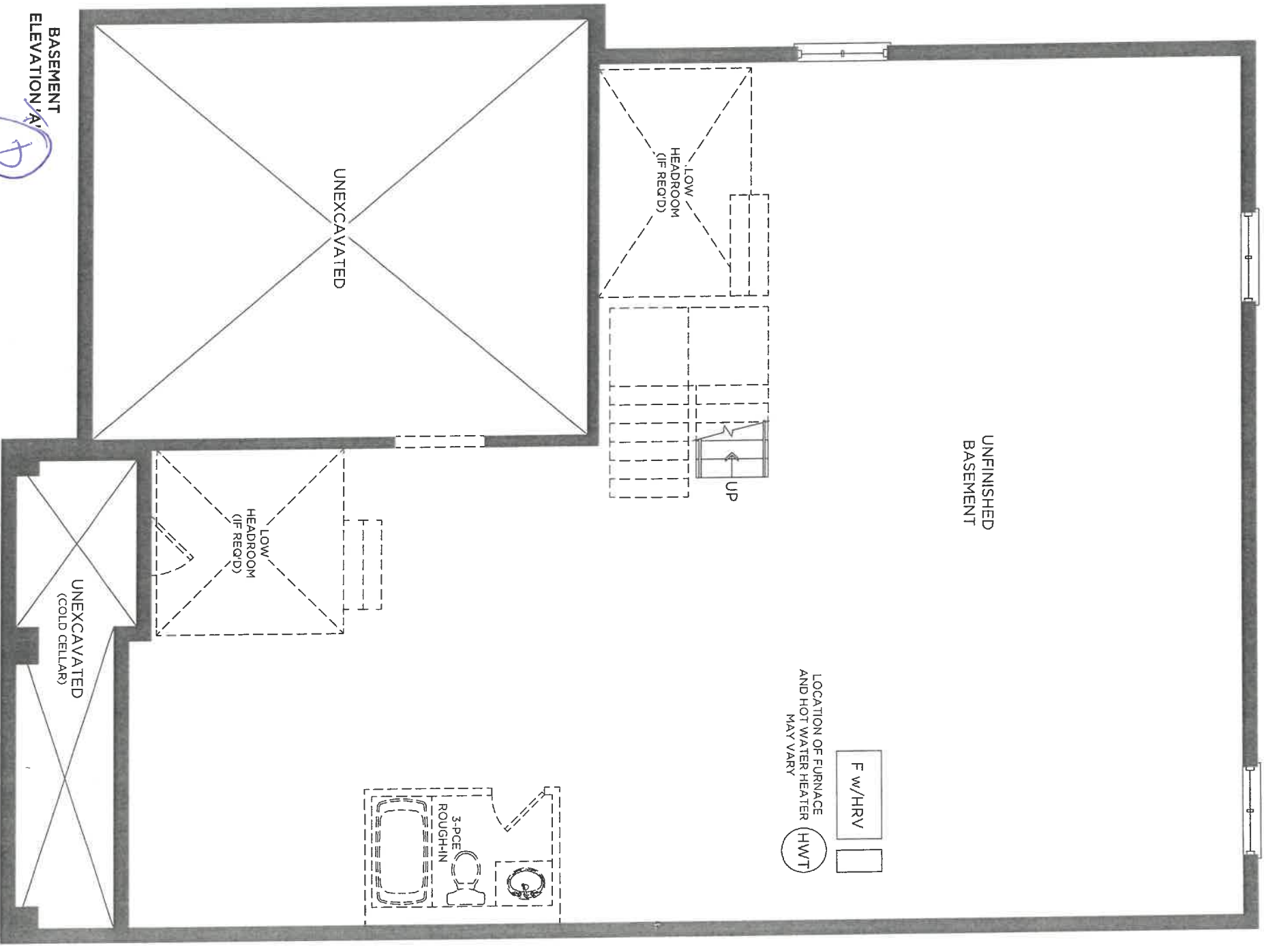
121





50-8

128



50-8

122